

Influenza Surveillance Report

Division of Epidemiology - Disease Surveillance and Investigation
 District of Columbia Department of Health

2012-2013 Influenza Season Week 15 (April 7, 2013– April 13, 2013)

(All data are preliminary and may change as more reports are received)

SUMMARY

- 6 cases of Influenza were reported by hospitals during this reporting period.
- Zero pediatric-deaths associated with Influenza were recorded during this reporting period.
- For the 2012-2013 Influenza Season to-date, 768 positive Influenza cases have been reported.

INFLUENZA SURVEILLANCE FROM HOSPITALS & AMBULATORY CARE FACILITIES

District of Columbia hospitals and laboratories report detailed information on cases of Influenza on a daily basis. However, in accordance with CDC guidelines, only Influenza-associated deaths in cases <18 years of age and Novel Influenza A infections are reportable.

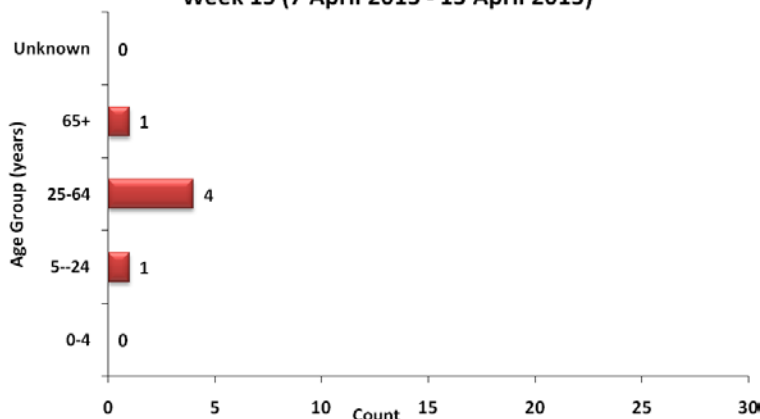
The table below summarizes weekly and cumulative cases of Influenza for the 2012-2013 Season. Data are also presented by age group and by number of cases reported weekly. During week 15 (April 7, 2013– April 13, 2013), there were 6 new cases of Influenza reported. To date, the District has received 768 positive Influenza cases among DC residents reported by hospitals.

Surveillance of Influenza Cases Reported By Influenza Type

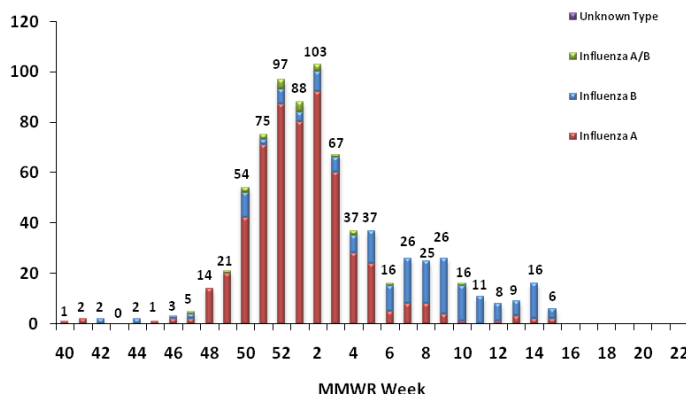
	Week 15 (April 7, 2013– April 13, 2013)		Cumulative Cases for Weeks 40 – 22 (30 September 2012 – 1 June 2013)	
Influenza A	2	(33.3%)	560	(72.9%)
Influenza B	4	(66.7%)	186	(24.2%)
Influenza A/B	0	(0%)	22	(2.9%)
Influenza (not typed)	0	(0%)	0	(0%)
Total	6*	(100%)	768*	(100.0%)

*Includes results from Rapid Diagnostic Testing, Viral Culture, RT-PCR, Serology, and Immunofluorescence.

Positive Influenza Tests, by Age Group
 Week 15 (7 April 2013 - 13 April 2013)



Positive Influenza Tests by Week
 September 30, 2012 - June 1, 2013



RAPID DIAGNOSTIC TESTING

Rapid Diagnostic Tests are screening tests used to detect the Influenza virus in a short period of time. While initially less accurate than PCR and viral culture, rapid diagnostics are more accurate as the Influenza season progresses. During week 15, 91 tests were performed using Rapid Diagnostic Testing in clinical laboratories. Of these, 6 (6.6%) positive Influenza specimens were identified.

Week: 15 (April 7, 2013– April 13, 2013)	
No. of specimens tested Rapid Diagnostics	91
No. of positive specimens (%)	6 (6.6%)
Positive specimens by type/subtype	
Influenza A	2 (33.3%)
Influenza B	4 (66.7%)
Influenza A/B	0 (0%)
Influenza – unknown type	0 (0%)

INFLUENZA-LIKE ILLNESS (ILI) SURVEILLANCE

Sentinel surveillance for ILI consists of three outpatient reporting sites for the District of Columbia. The sentinel surveillance sites report the total number of ILI cases encountered per week and the total number of patients seen at the clinic during that same week. For this system, ILI is defined as the existence of fever (temperature of 100°F [37.8°C] or greater) and a cough and/or a sore throat in the absence of a known cause other than Influenza.

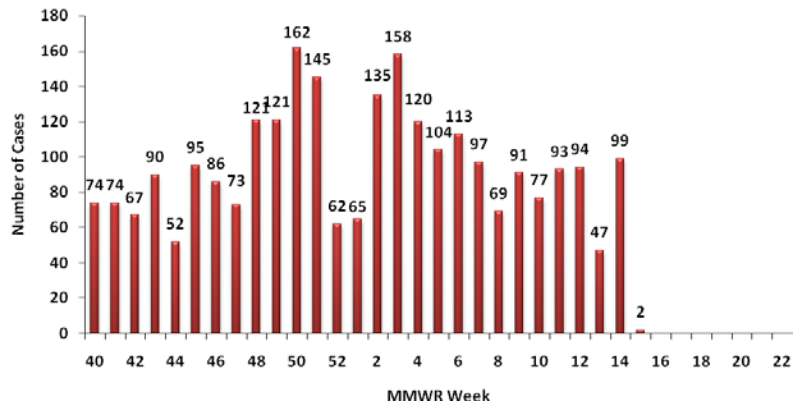
For week 15, sentinel providers reported that 2 out of 520 visits (0.4%) met the criteria for ILI.

Sentinel Surveillance ILI Activity for Washington, DC

Week of	Activity *
April 7 – April 13	<i>Sporadic</i>

- *No Activity** – overall clinical activity remains low and there are no lab confirmed Influenza cases;
- Sporadic** – isolated lab confirmed Influenza cases reported and ILI activity is not increased;
- Local** – increased ILI activity and recent lab confirmed Influenza cases. As the District of Columbia is not a state, this is the highest level of ILI activity it can report.

Influenza-Like Illness Reported by MMWR Weekly September 30, 2012 - June 1, 2013



INFLUENZA TESTING BY THE DISTRICT OF COLUMBIA PUBLIC HEALTH LABORATORY (DC PHL)

The DC PHL subtypes human isolates to monitor the circulating strains of Influenza. The isolates are submitted to the DC PHL by hospitals and commercial laboratories. In week 15, 0 out of 7 specimens sent to the DC PHL have tested positive for Influenza. Cumulatively from October 1, 2012 to April 6, 2013, 252 specimens have been tested, of which there have been 164 positive specimens. 116 of these isolates were subtyped as Influenza A/H3, 10 were subtyped as Influenza A/H1 2009 H1N1, and 38 were Influenza B.

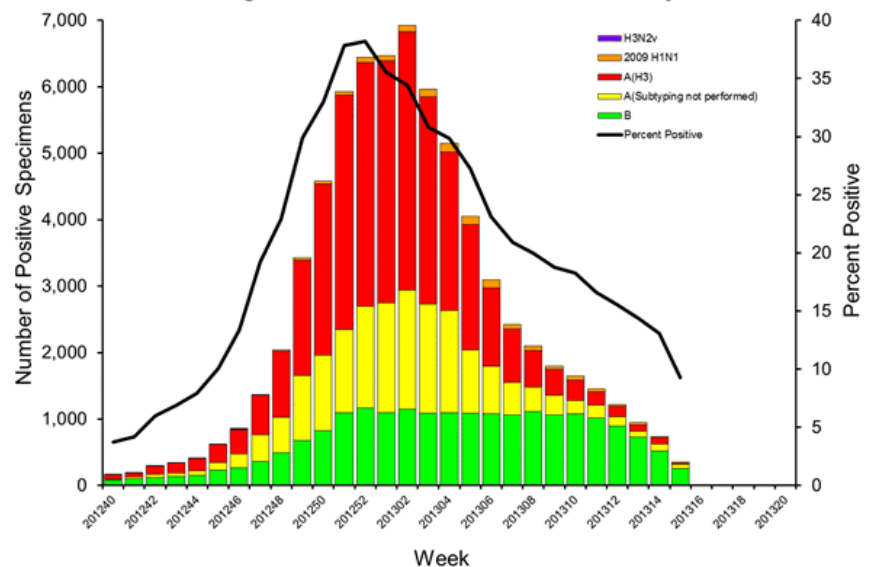
DC PHL Surveillance of Influenza Cases Reported By Influenza Subtype

DC PHL Influenza Testing	Week 15 April 7, 2013 – April 13, 2013	Total Cases October 1, 2012 – April 6, 2013
Number of specimens tested	7 (100%)	252 (100%)
◆ Number of specimens positive for Influenza:	0 (0%)	164 (65%)
● Influenza A	0 (0%)	126 (50%)
▪ H1 2009 H1N1	0 (0%)	10 (4%)
▪ H1 seasonal	0 (0%)	0 (0%)
▪ H3	0 (0%)	116 (46%)
● Influenza B	0 (0%)	38 (15%)

NATIONAL INFLUENZA ASSESSMENT

The CDC's weekly seasonal Influenza surveillance report for week 15 noted that Influenza activity decreased in the United States. The proportion of outpatient visits for Influenza-like illness (ILI) was 1.3%, below the national baseline of 2.2%. The proportion of deaths due to Influenza and pneumonia in the US was below the epidemic threshold. Ten Influenza-associated pediatric deaths were reported in the US, with one death associated with an Influenza A (H3) virus, one with 2009 H1N1 virus, one with un-subtyped influenza A virus, and seven associated with Influenza B viruses. For the 2012-2013 Influenza season, a total of 126 pediatric deaths associated with Influenza have been reported in the US. During week 15, 3,082 specimens were tested, of which 354 were positive (9.3%). Of the 354 that tested positive, 93 (26.3%) were Influenza A viruses and the remaining 261 (73.7%) were Influenza B viruses. Of the Influenza A samples, 18 (19.4%) were Influenza A/H3, 16 (17.2%) were Influenza A/2009 H1N1, and 59 (63.4%) of the viruses were not subtyped.

Influenza Positive Tests Reported to CDC by U.S. WHO/NREVSS Collaborating Laboratories, National Summary, 2012-13



Get Vaccinated!

To find an Influenza vaccine provider, visit the District of Columbia Flu Resource Center at <http://doh.dc.gov/doh/cwp/view,a,1370,q,604320.asp>



For additional information about Influenza and Influenza activity in the United States, please visit: <http://www.cdc.gov/flu/index.htm>.

Questions about Influenza in the District of Columbia or this report should be directed to the Division of Epidemiology - Disease Surveillance and Investigation at (202) 442-8141 or email gabrielle.ray@dc.gov.