



Department of Employment Services
Washington, DC's lead workforce development and labor agency

D.C. Labor Market Indicators: December 2019

Dr. Unique Morris-Hughes, Director

Ta-Tanisha Wallace, Chief Strategist for
Education and Workforce Innovation

Saikou A. Diallo, Chief Economist

**Prepared by the Office of Labor Market Research and
Performance**



Department of Employment Services

Washington, DC's lead workforce development and labor agency

Highlights

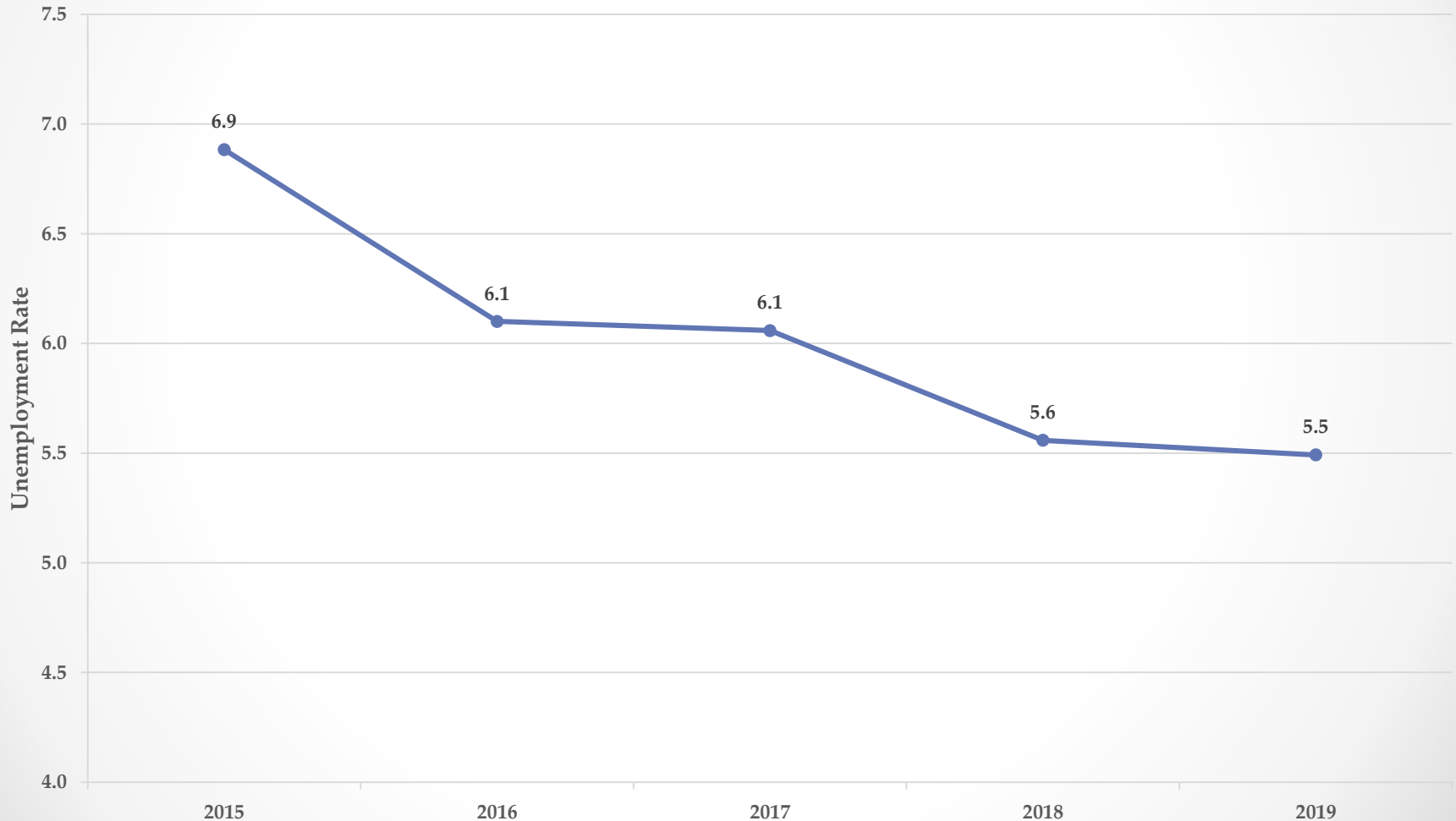
- From January 2015 to December 2019:
 - ❖ The unemployment rate in DC decreased by **2.1** percentage points (or **28.4%** decrease);
 - ❖ Unemployment rate in Ward 7 and Ward 8 decreased by **4.3** percentage points (**33.3%** decrease) and **4.8** percentage points (**29.8%** decrease) respectively;
 - ❖ Total number of DC residents that are employed increased by **34,200**;
 - ❖ Total number of jobs in DC increased by **57,600**;
 - ❖ Initial monthly unemployment insurance benefits claimants decreased by **26.35%**;
 - ❖ Total number of unemployed DC residents decreased by **6,600** people;
 - ❖ In DC there are **2.0** jobs available (advertised) for **1** unemployed DC resident;
 - ❖ The average weekly median duration of unemployment for Black and African American decreased by **15.4** weeks;
 - ❖ The private sector total number of payroll jobs in the District increased by **55,300** new jobs or **10.79%** increase from January 2015;
 - ❖ Professional and Business Services has the highest employment increase by industry with **14,700 since January 2015**;
 - ❖ The highest in-demand occupation is Software Developers, Applications with an average monthly opening of **4,087**;
 - ❖ The highest in-demand occupation requiring less than a bachelor's degree is Computer User Support Specialists with an average monthly opening of **1,995**.



Department of Employment Services

Washington, DC's lead workforce development and labor agency

DC Annual Average Unemployment Rate (2015-2019)

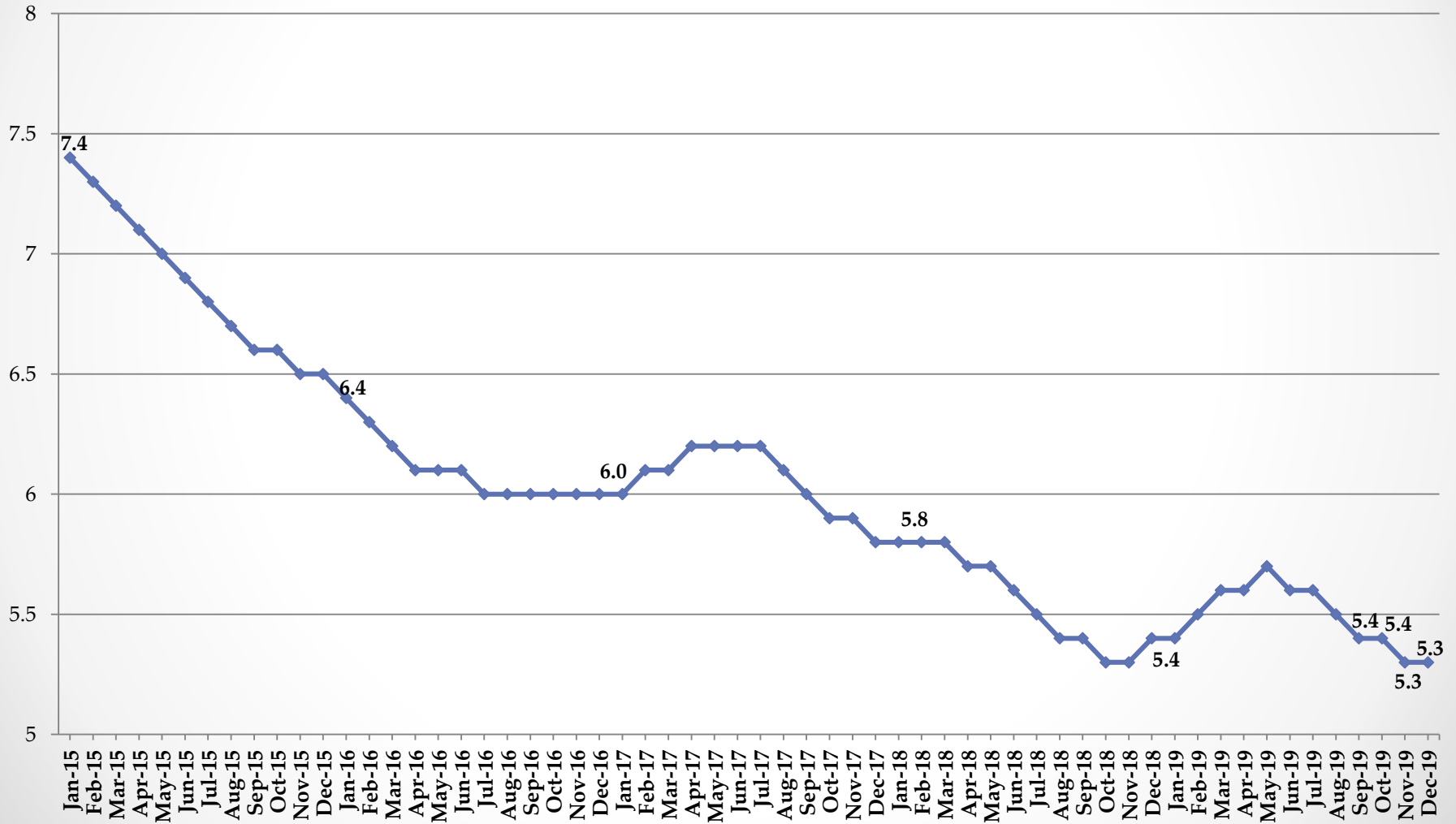




Department of Employment Services

Washington, DC's lead workforce development and labor agency

The District's Monthly Unemployment Rate: Jan. 2015 - Dec. 2019

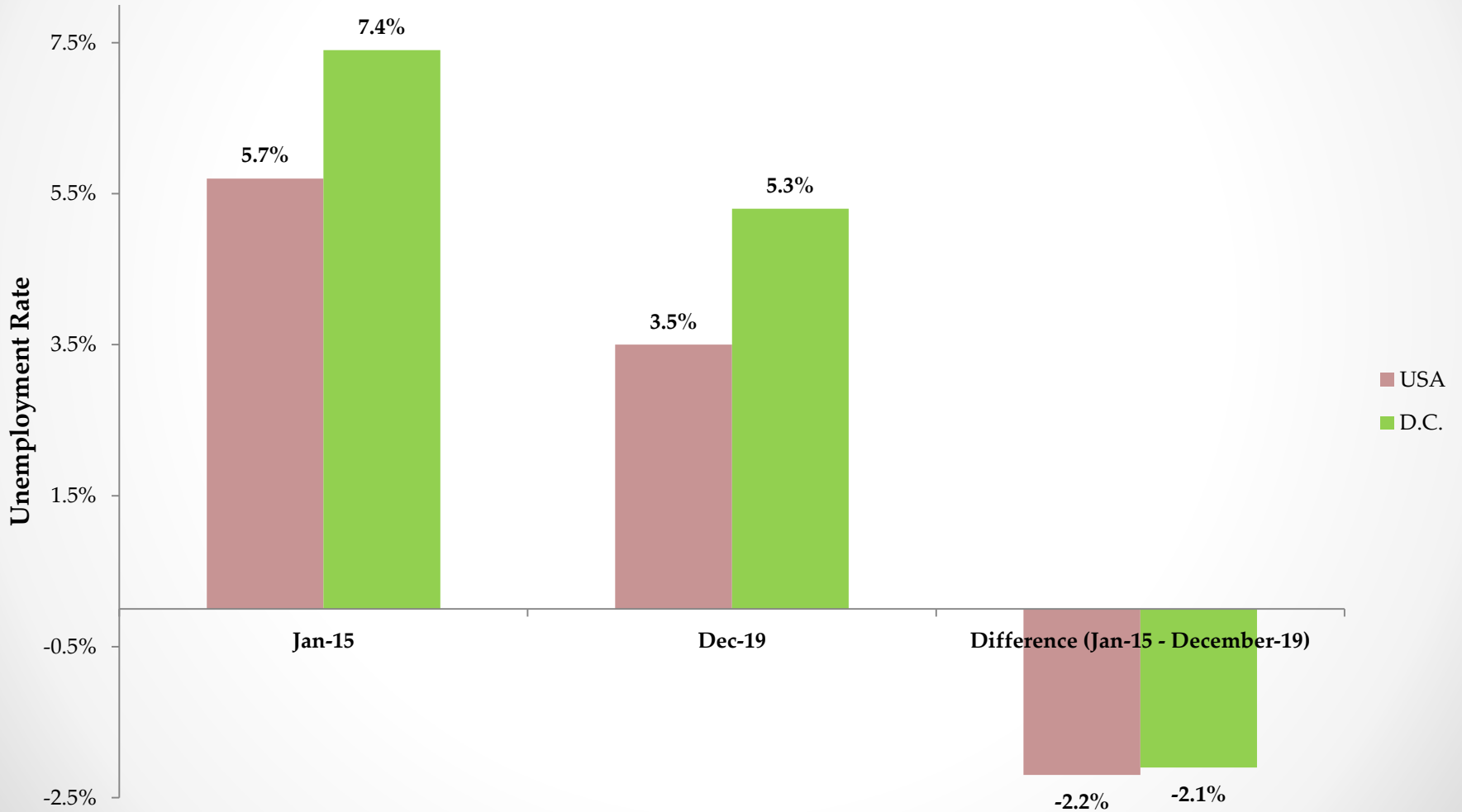




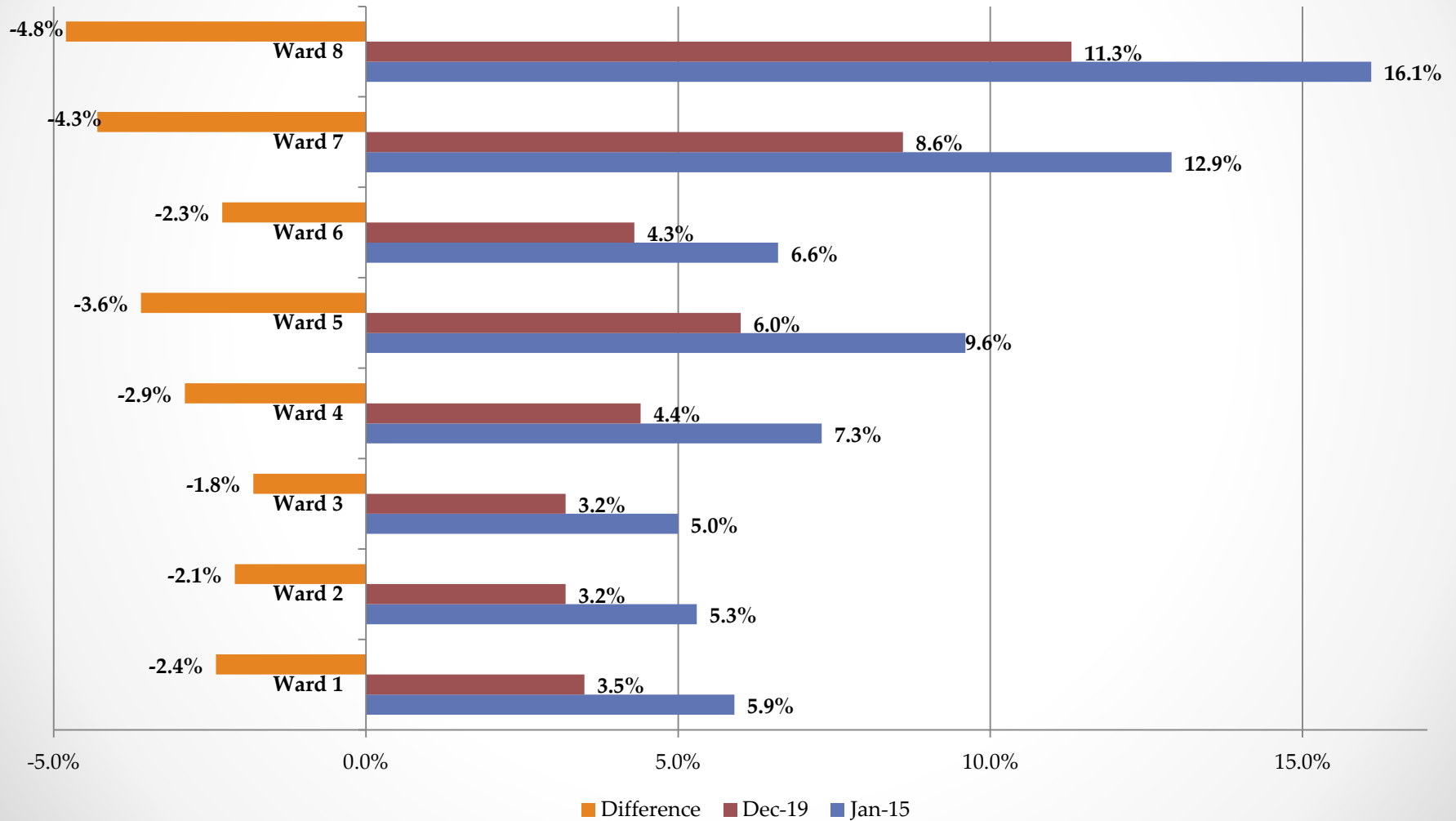
Department of Employment Services

Washington, DC's lead workforce development and labor agency

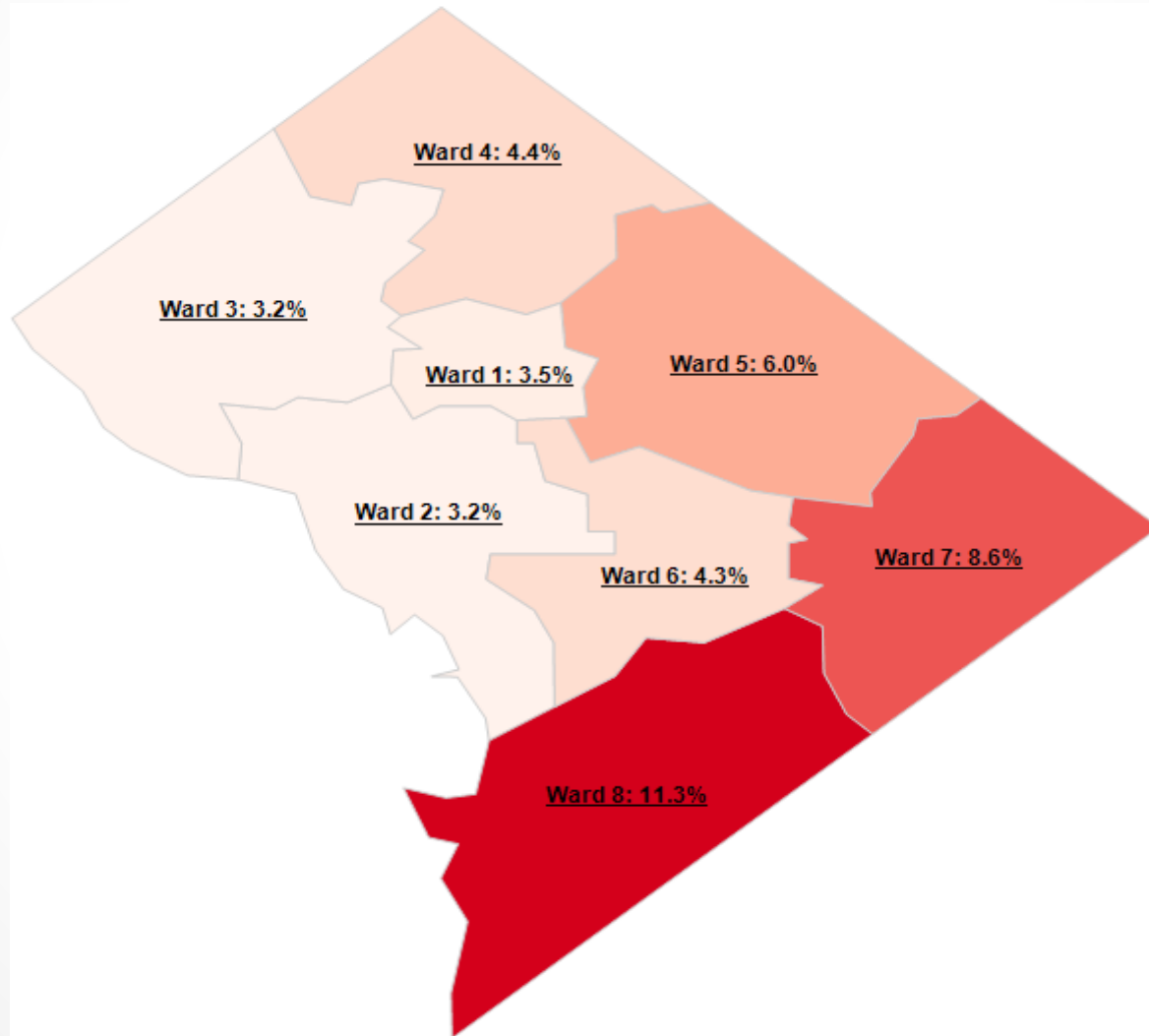
Unemployment Rate (January 2015 - December 2019)



Unemployment Rate by Ward (January 2015 - December 2019)



Unemployment Rate by Ward: December 2019

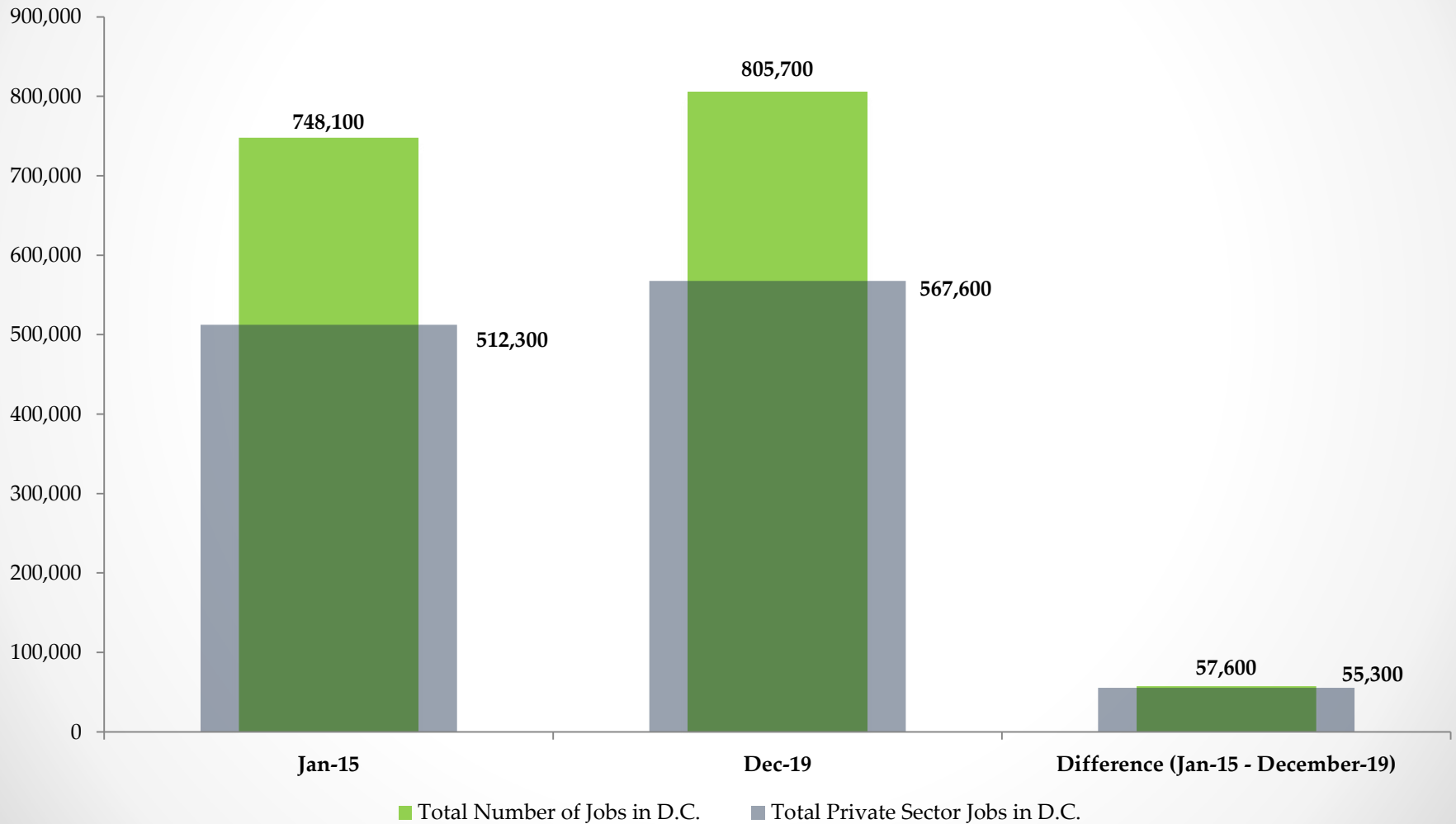




Department of Employment Services

Washington, DC's lead workforce development and labor agency

Total Number of Jobs and Total Private Sector Jobs in DC (Jan. 2015 - Dec. 2019)

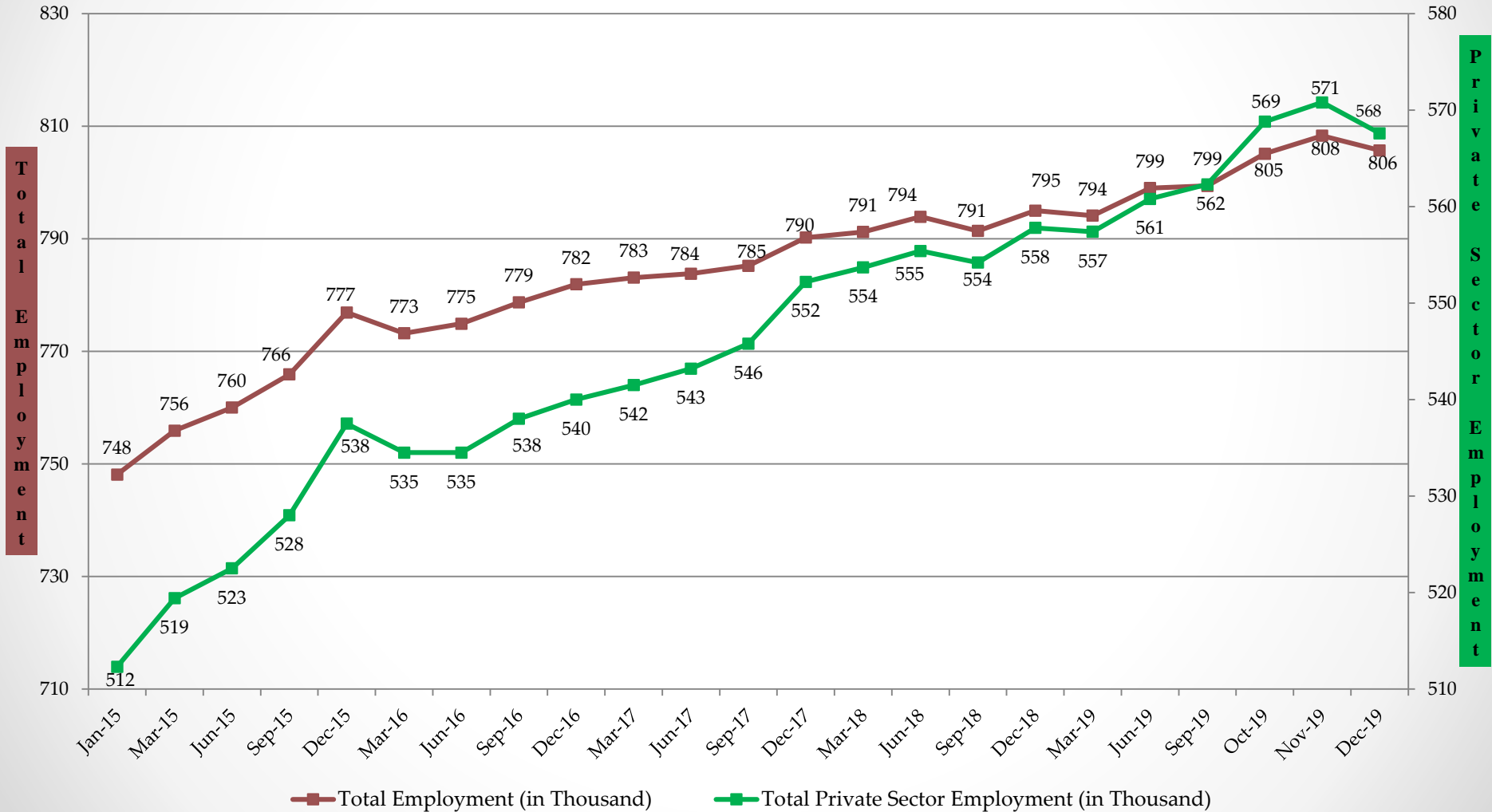




Department of Employment Services

Washington, DC's lead workforce development and labor agency

Total Employment and Private Sector Employment in D.C. (Jan.2015 - Dec. 2019) (In Thousands)

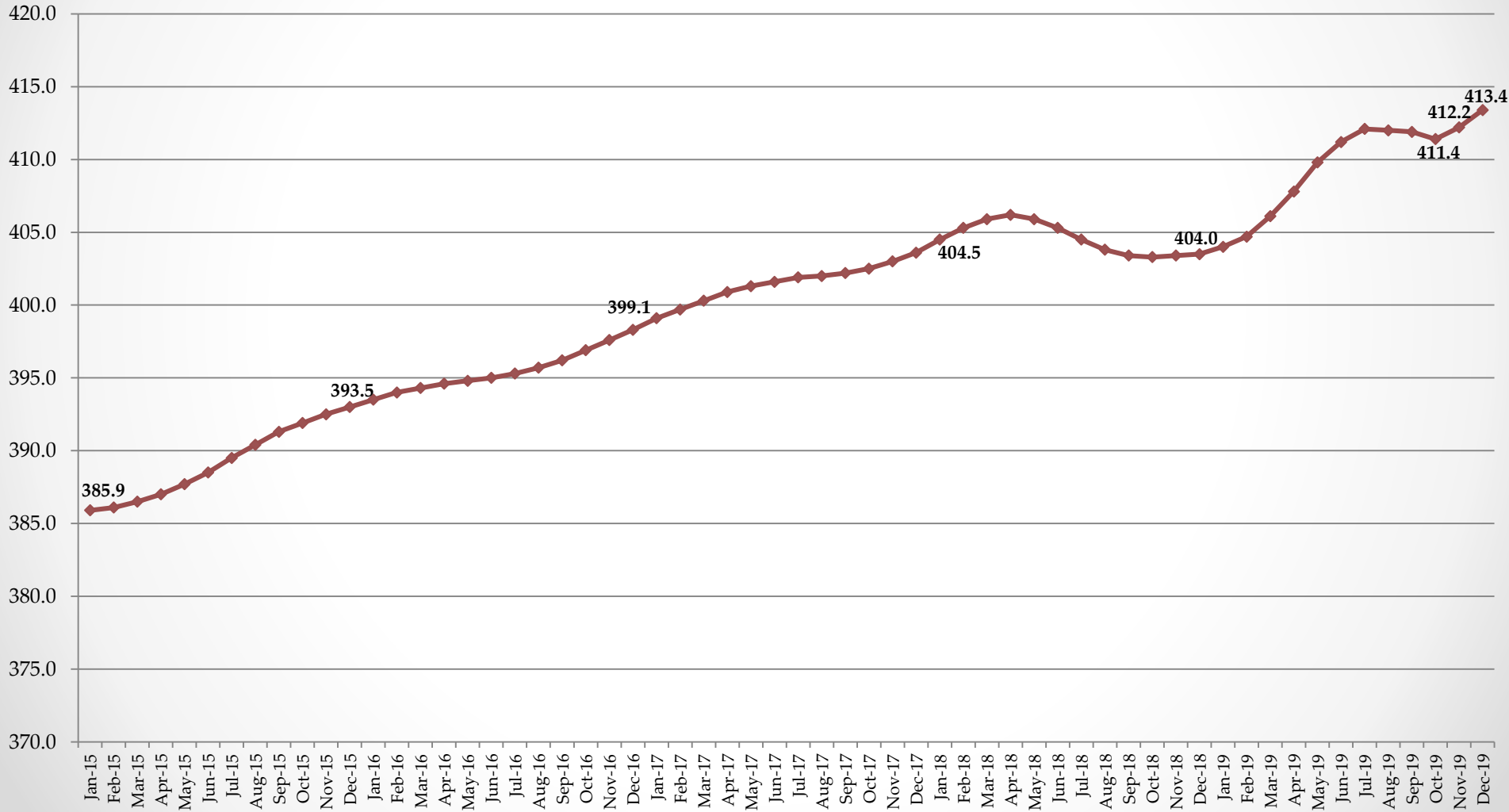




Department of Employment Services

Washington, DC's lead workforce development and labor agency

The District's Labor Force (Jan. 2015 - Dec. 2019) (In Thousands)

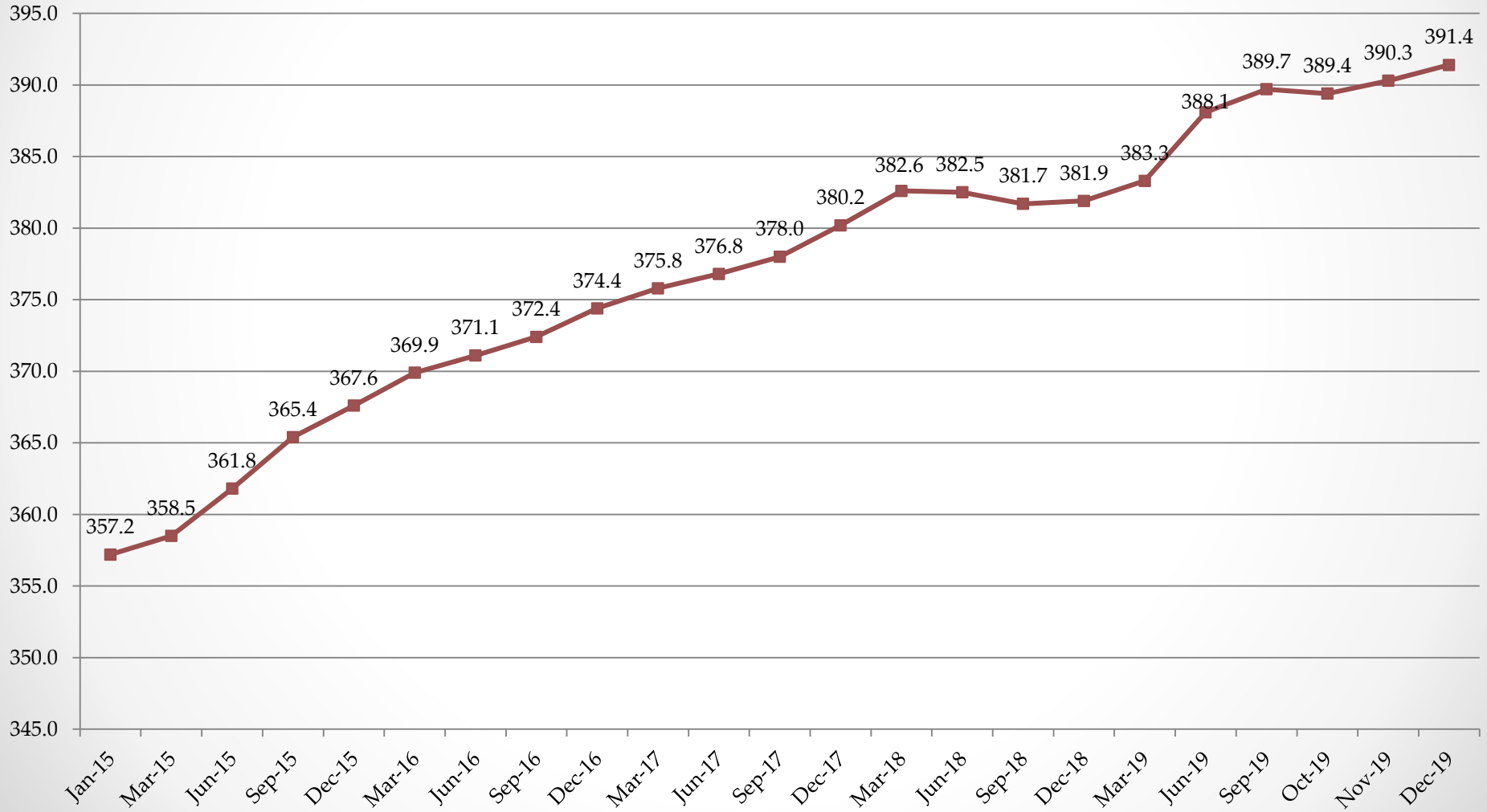




Department of Employment Services

Washington, DC's lead workforce development and labor agency

Employed D.C. Residents (Jan. 2015 - Dec. 2019) (In Thousands)

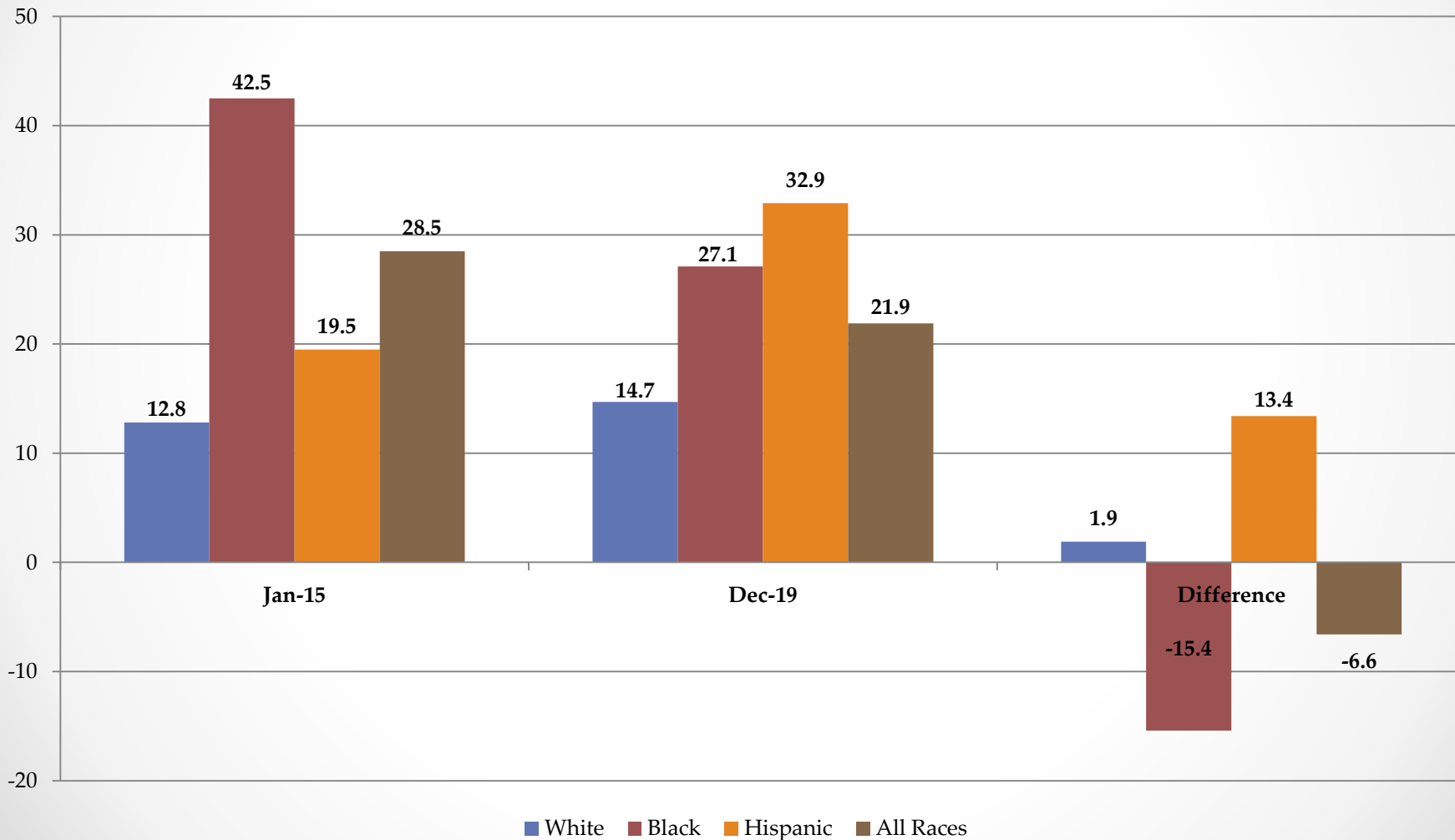




Department of Employment Services

Washington, DC's lead workforce development and labor agency

Median Duration of Unemployment (in weeks) (Jan. 2015 - Dec. 2019)

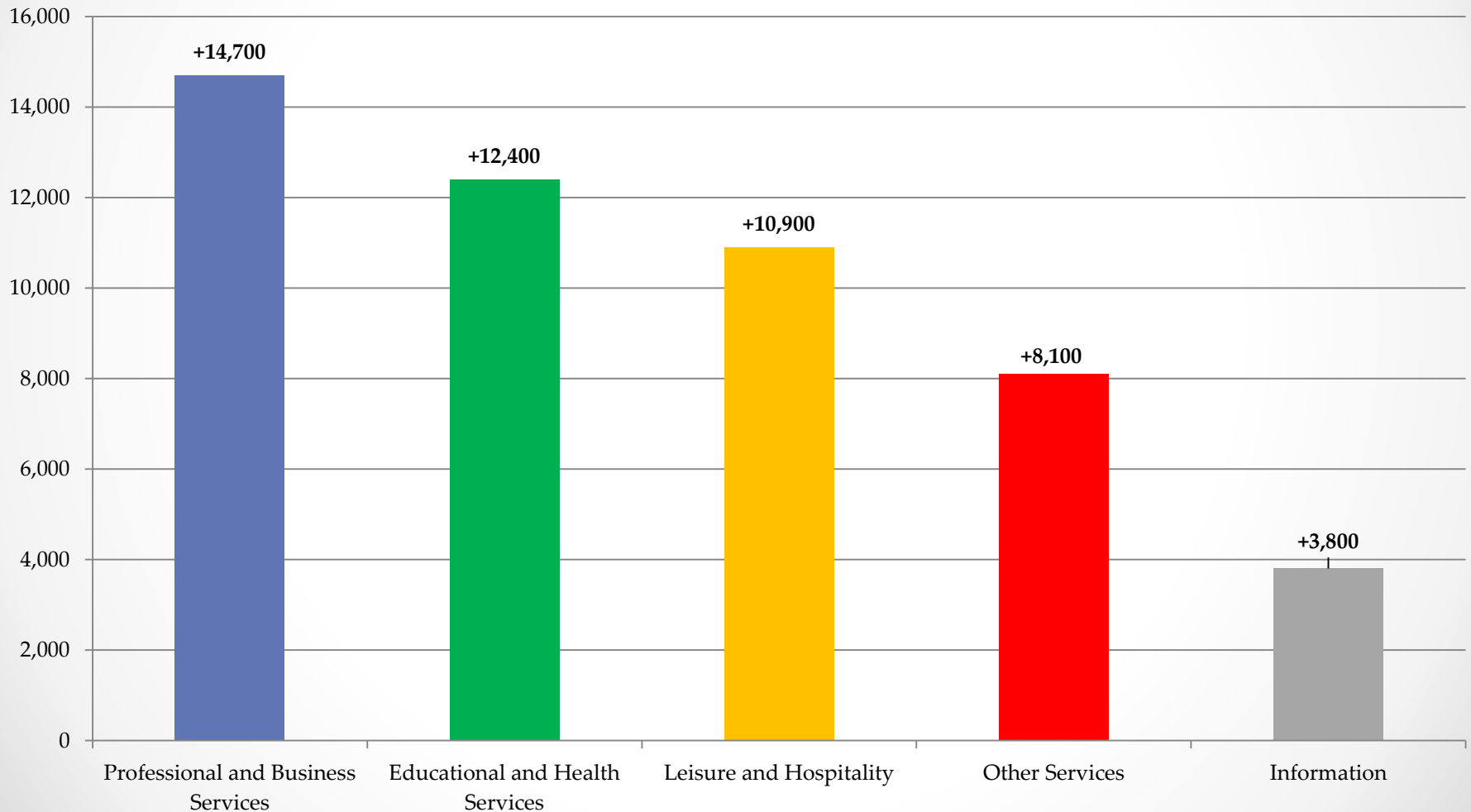




Department of Employment Services

Washington, DC's lead workforce development and labor agency

Top 5 Industry with Highest Employment Increase (Jan.2015 – Dec. 2019)

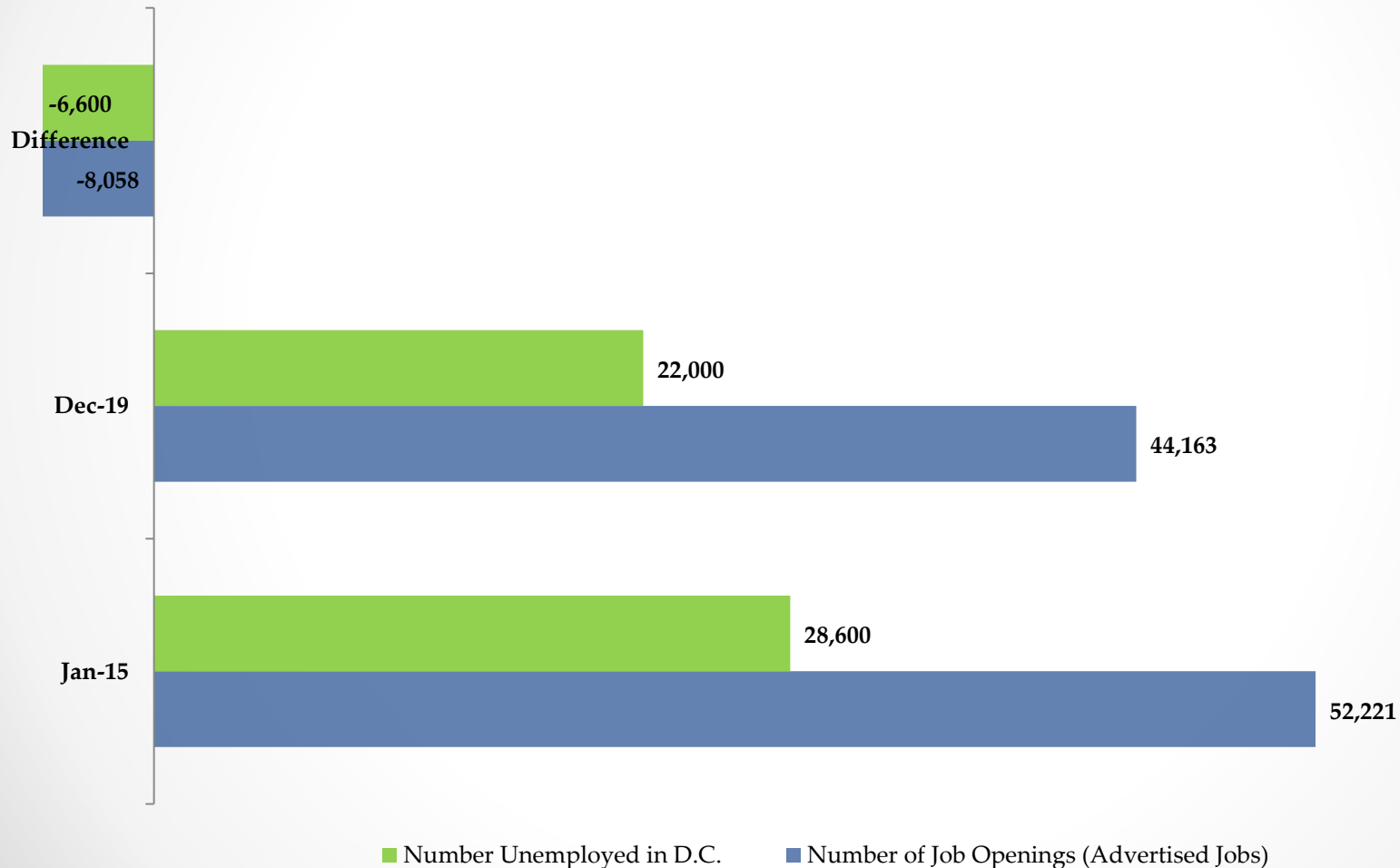




Department of Employment Services

Washington, DC's lead workforce development and labor agency

Job Openings vs. Number of Unemployed DC Residents (Jan. 2015 - Dec. 2019)

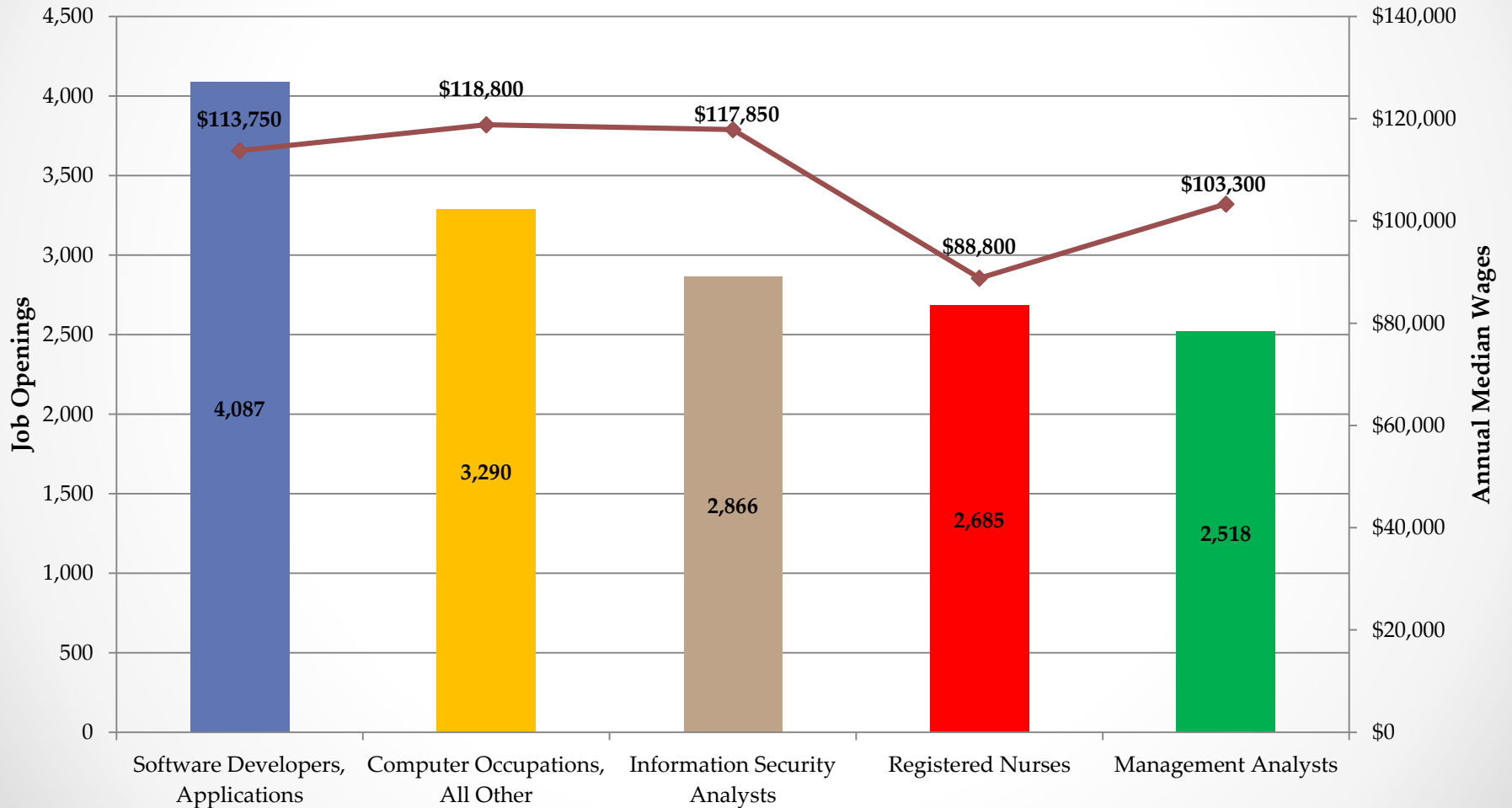




Department of Employment Services

Washington, DC's lead workforce development and labor agency

Top 5 Job Openings: January 2017 - December 2019 (Average Monthly Unique Job Postings)

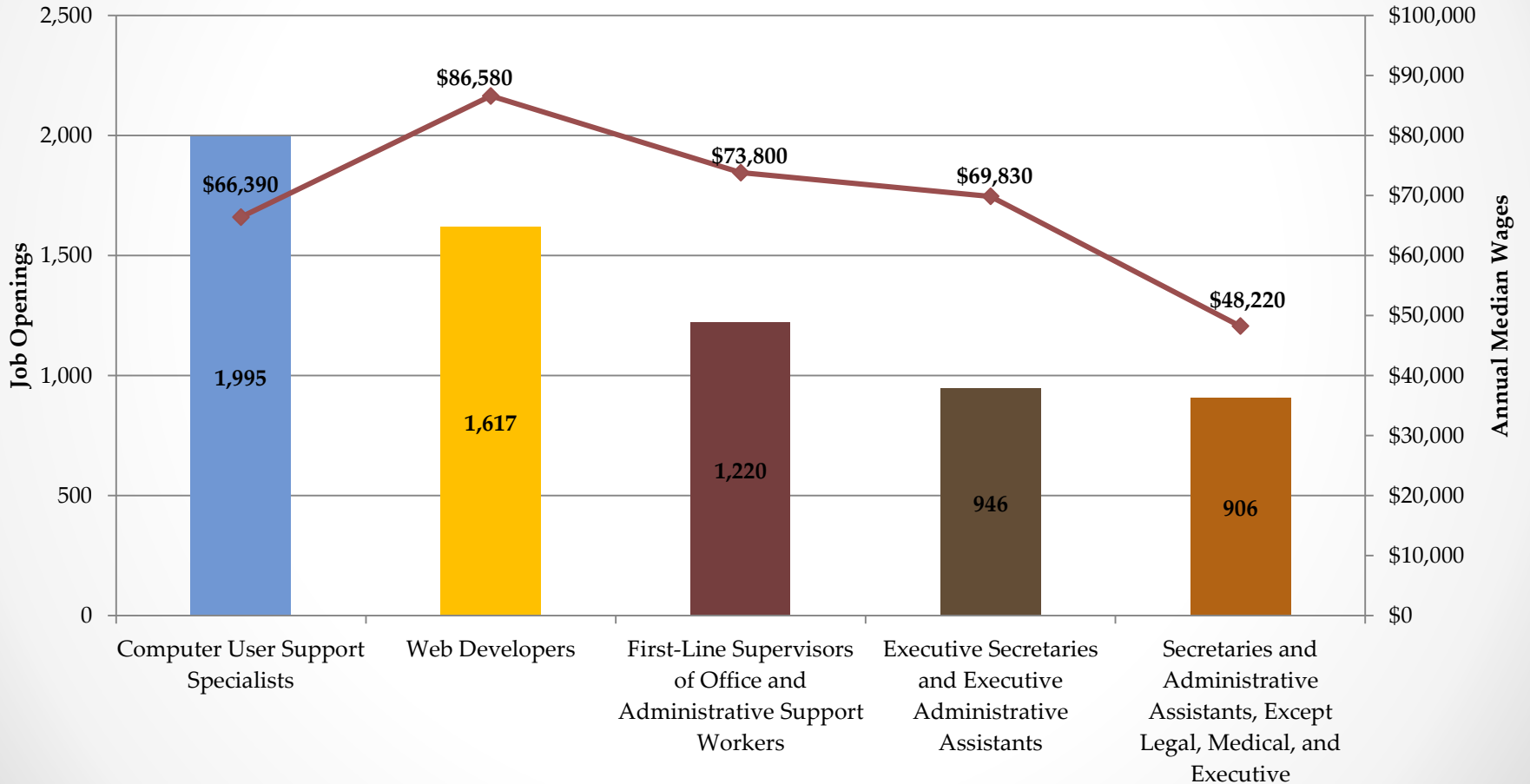




Department of Employment Services

Washington, DC's lead workforce development and labor agency

Top 5 Job Openings Requiring Less Than Bachelor's Degree: January 2017 - December 2019
(Average Monthly Unique Job Postings)





Department of Employment Services

Washington, DC's lead workforce development and labor agency

Contact Information

- Opeyemi Fasakin, Labor Economist
- Thomas Tsegaye, Labor Economist
- **Data Request:** <https://app.smartsheet.com/b/form/631658c092ef4395ab27b76716df8068>
- **Email:** Imi.does@dc.gov
- **Phone:** (202) 671-1633
- **Website:** www.does.dc.gov
- <http://does.dc.gov/page/labor-statistics>