



**Department of Employment Services**  
*Washington, DC's lead workforce development and labor agency*

---

# D.C. Labor Market Indicators: January 2015 - July 2020

Dr. Unique Morris-Hughes, Director

Ta-Tanisha Wallace, Chief Strategist for  
Education and Workforce Innovation

Saikou A. Diallo, Chief Economist

**Prepared by the Office of Labor Market Research and  
Performance**



# Department of Employment Services

*Washington, DC's lead workforce development and labor agency*

---

## Highlights

- From January 2015 to July 2020:
  - ❖ The unemployment rate in DC increased by **1.0** percentage points (or **13.5%** increase);
  - ❖ Unemployment rate in Ward 7 and Ward 8 increased by **1.5** percentage points (**11.6%** increase) and **2.5** percentage points (**15.5%** increase) respectively;
  - ❖ Total number of DC residents that are employed increased by **2,800**;
  - ❖ Total number of jobs in DC increased by **6,300**;
  - ❖ Initial monthly unemployment insurance benefits claimants increased by **573%**;
  - ❖ Total number of unemployed DC residents increased by **4,600** people;
  - ❖ In DC there are **1.0** jobs available (advertised) for **1** unemployed DC resident;
  - ❖ The average weekly median duration of unemployment for Black and African American decreased by **20.3** weeks;
  - ❖ The private sector total number of payroll jobs in the District decreased by **7,000** jobs or **-1.37%** decrease from January 2015;
  - ❖ Professional and Business Services has the highest employment increase by industry with **8,300 since January 2015**;
  - ❖ The highest in-demand occupation is Software Developers and Software Quality Assurance Analysts and Testers with an average monthly opening of **4,808**;
  - ❖ The highest in-demand occupation requiring less than a bachelor's degree is Computer User Support Specialists with an average monthly opening of **2,062**.

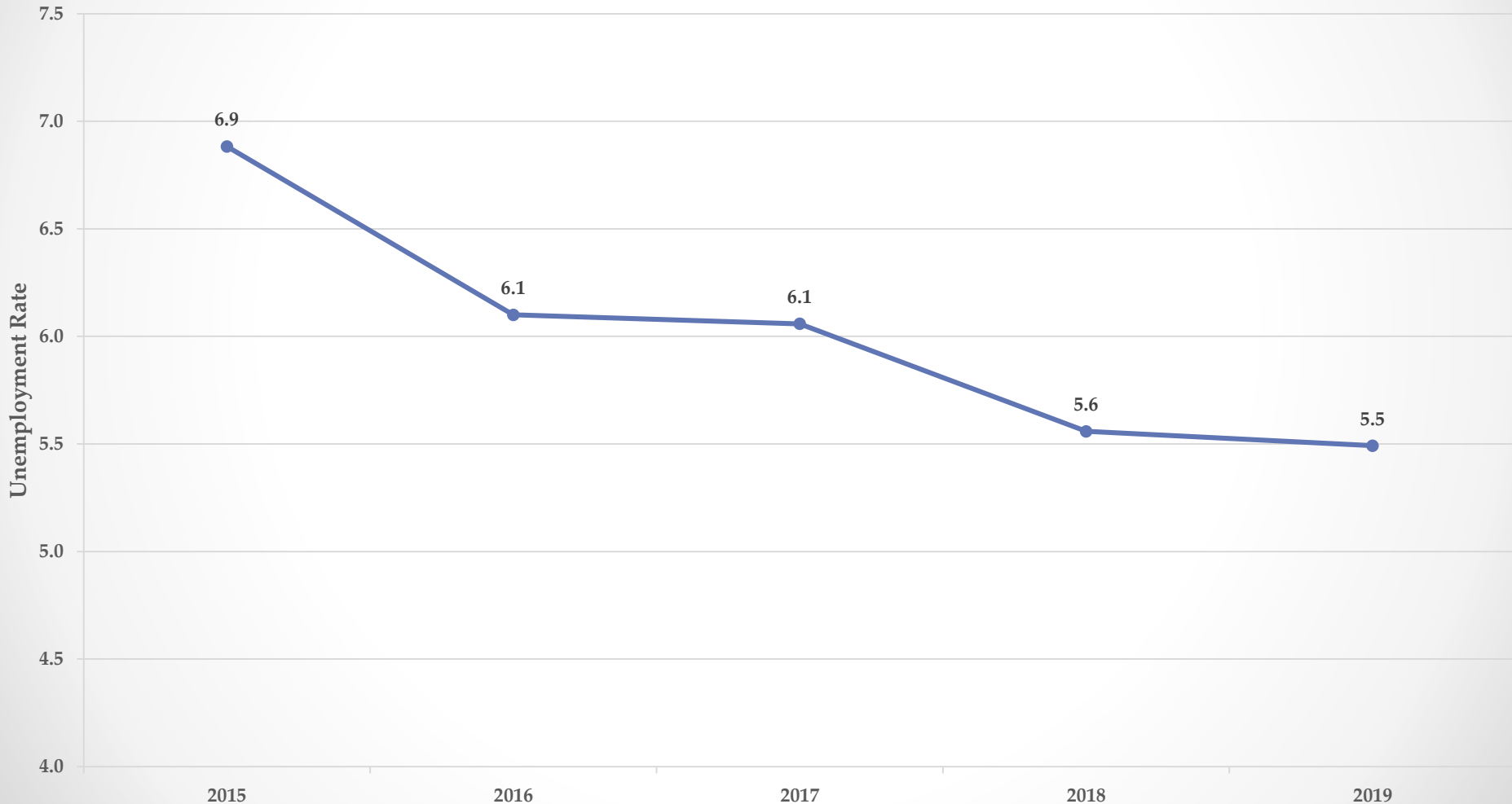


# Department of Employment Services

*Washington, DC's lead workforce development and labor agency*

---

## DC Annual Average Unemployment Rate (2015-2019)

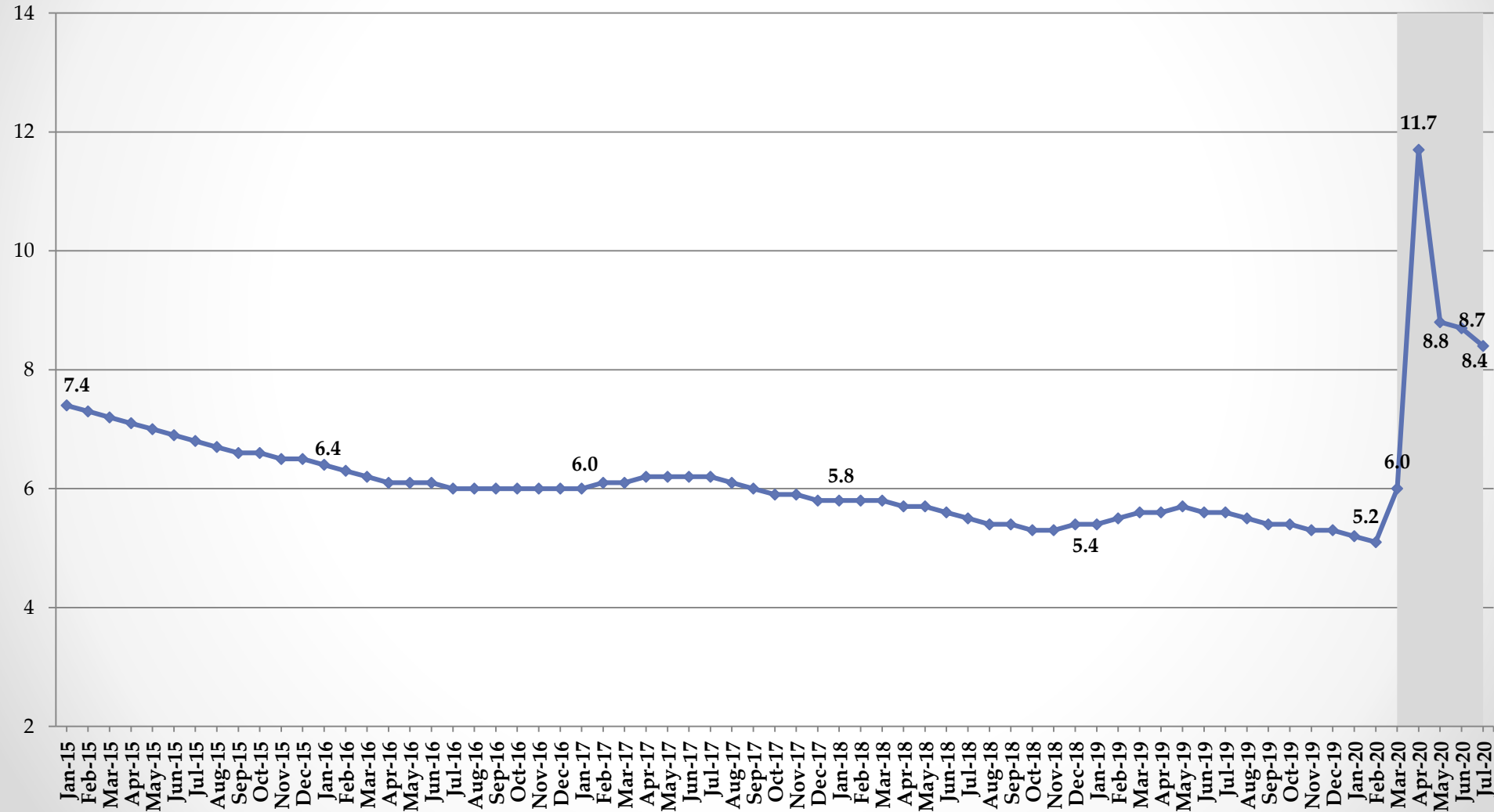




# Department of Employment Services

*Washington, DC's lead workforce development and labor agency*

The District's Monthly Unemployment Rate: Jan. 2015 - July 2020

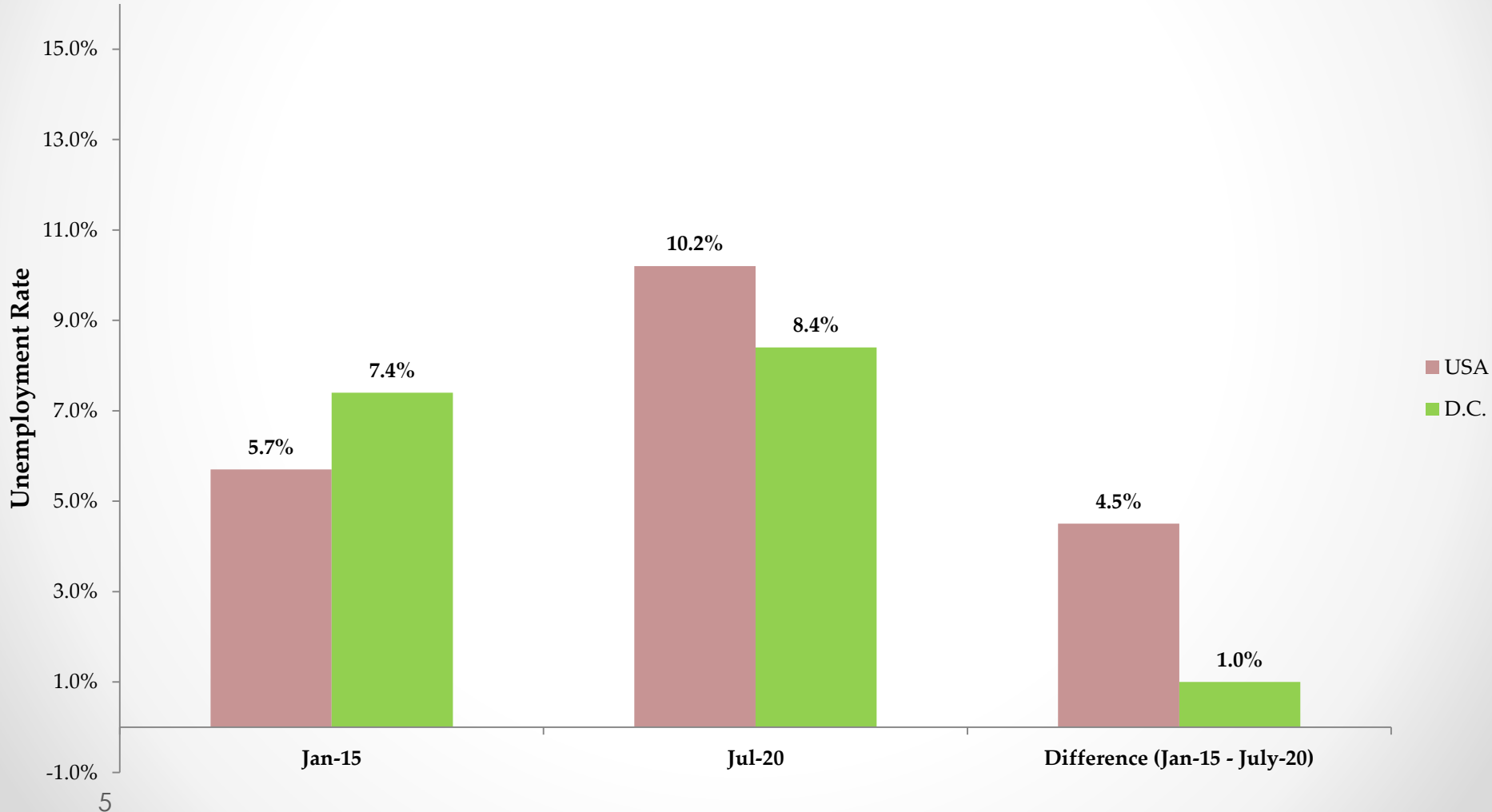




# Department of Employment Services

Washington, DC's lead workforce development and labor agency

## Unemployment Rate (January 2015 - July 2020)

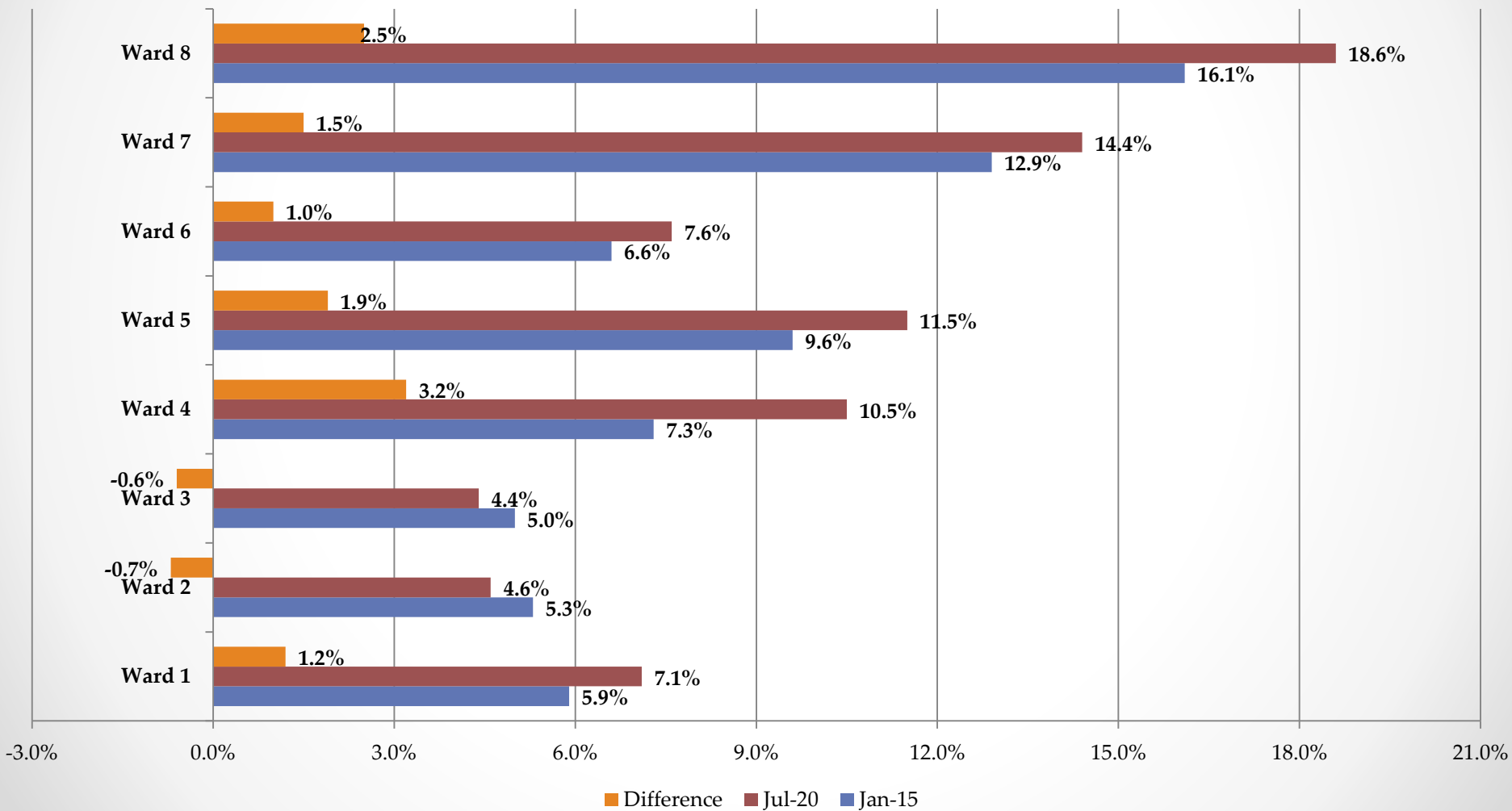




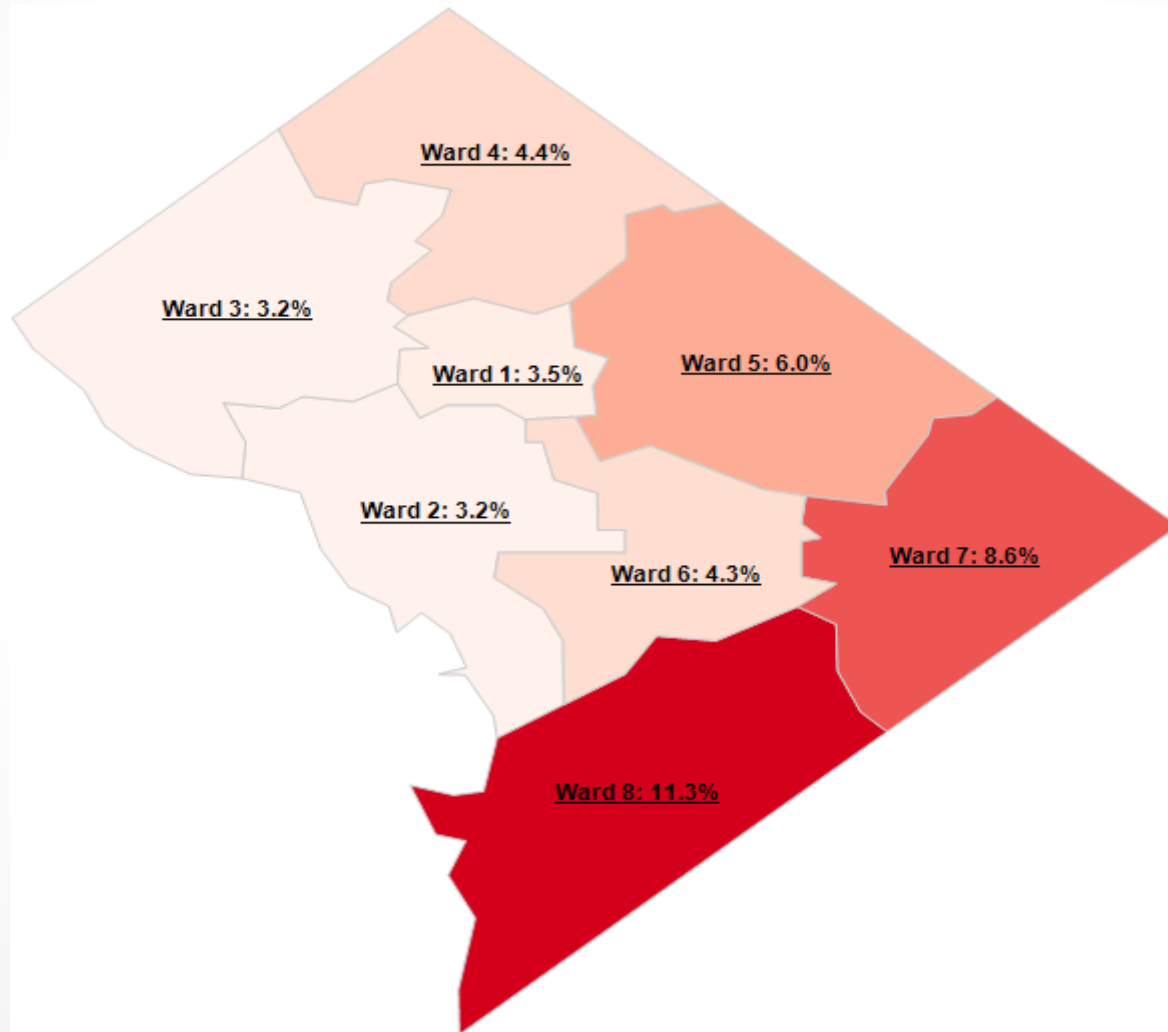
# Department of Employment Services

*Washington, DC's lead workforce development and labor agency*

## Unemployment Rate by Ward (January 2015 - July 2020)



## Unemployment Rate by Ward: July 2020

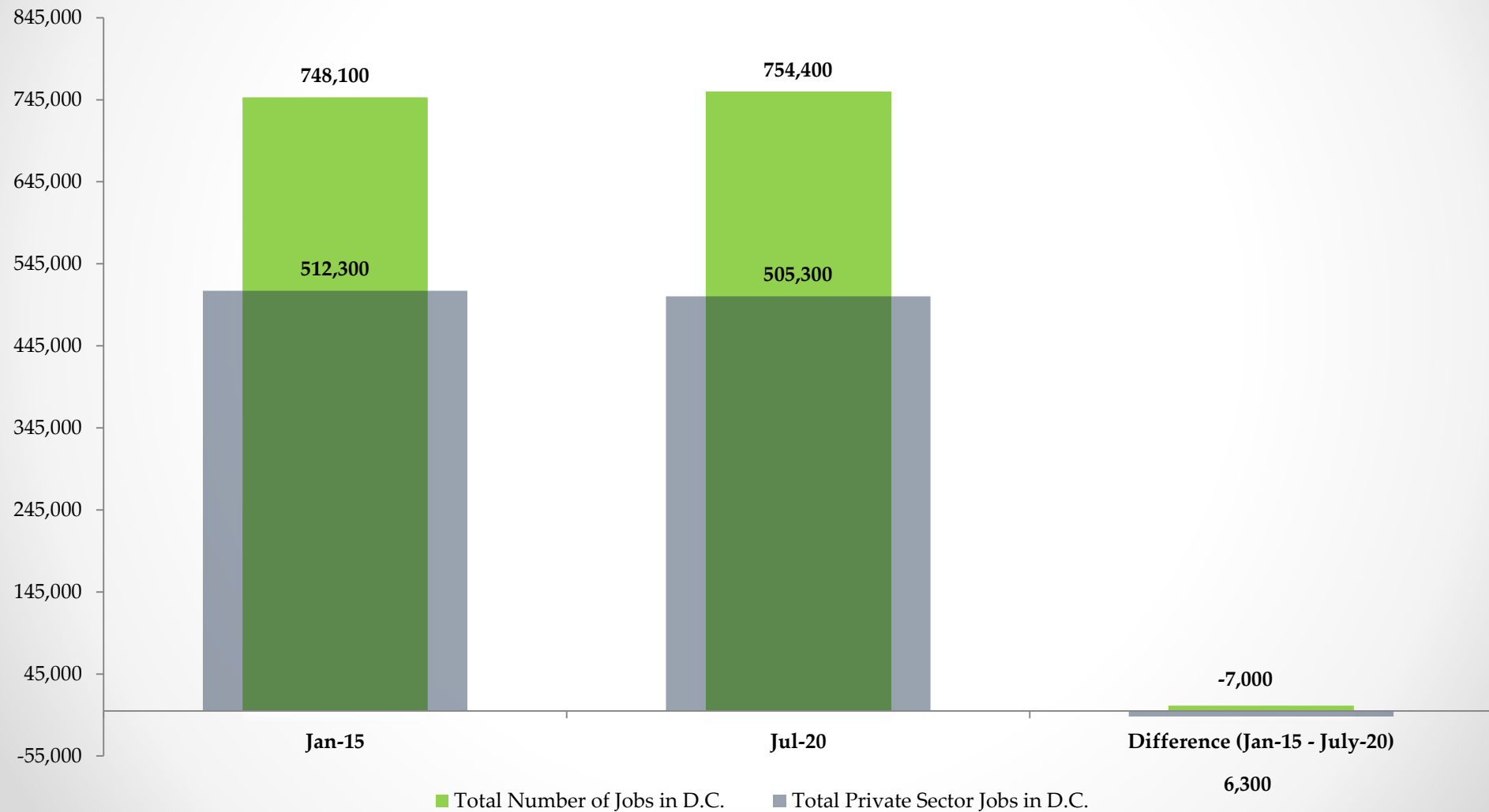




# Department of Employment Services

*Washington, DC's lead workforce development and labor agency*

Total Number of Jobs and Total Private Sector Jobs in DC (Jan. 2015 - July 2020)



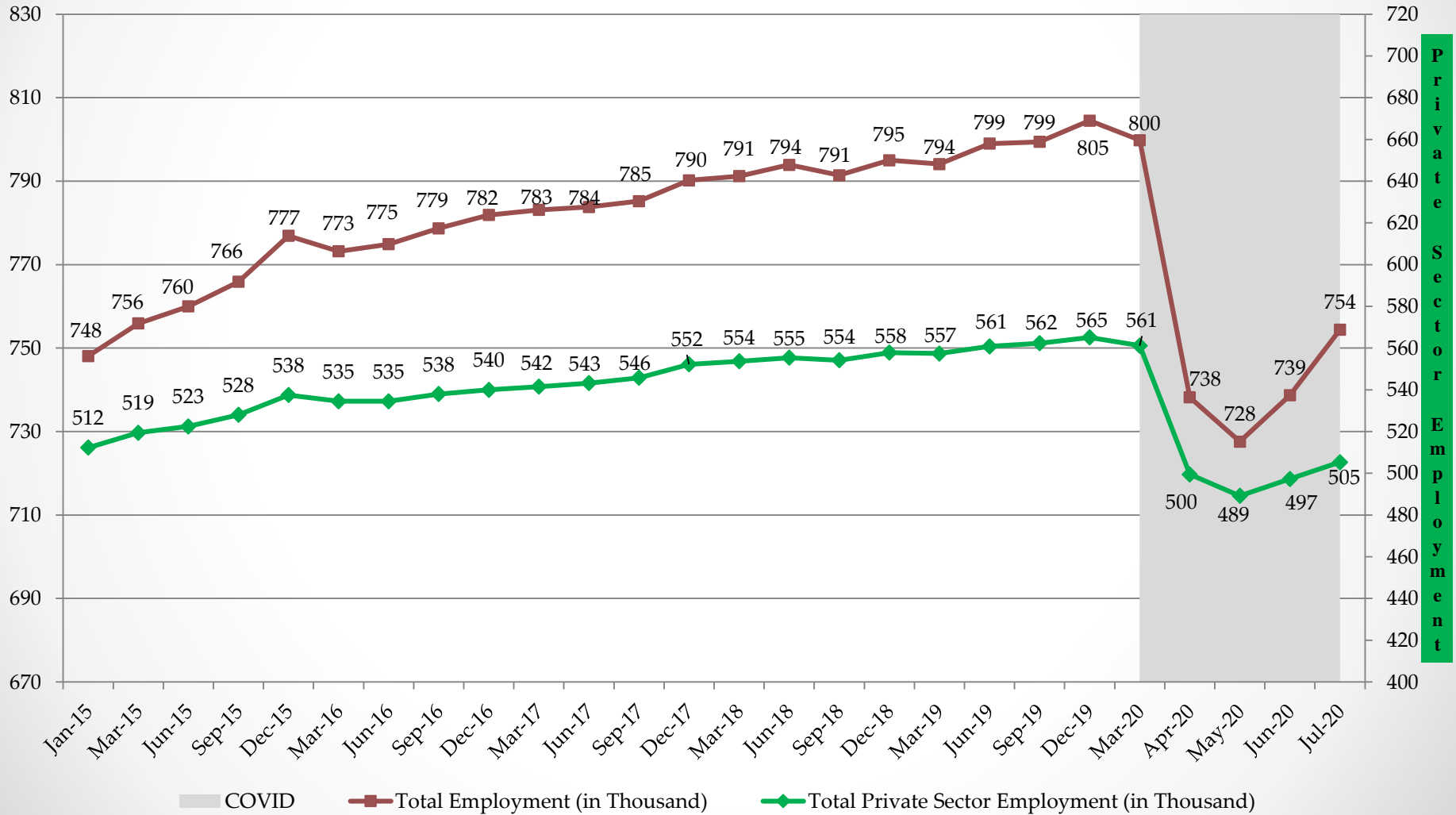




# Department of Employment Services

Washington, DC's lead workforce development and labor agency

Total Employment and Private Sector Employment in D.C. (Jan.2015 - July 2020 (In Thousands))

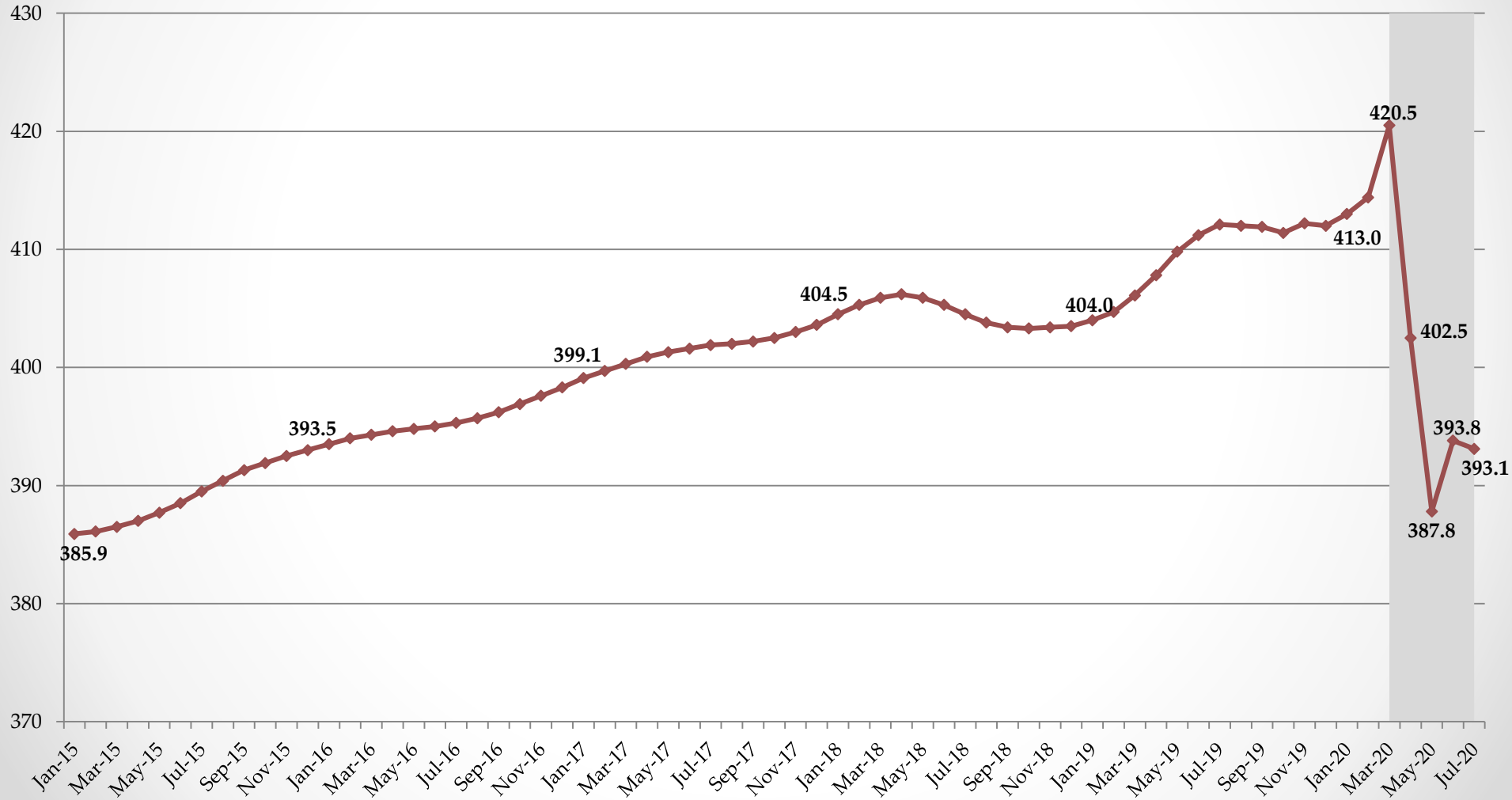




# Department of Employment Services

*Washington, DC's lead workforce development and labor agency*

The District's Labor Force (Jan. 2015 - July 2020) (In Thousands)

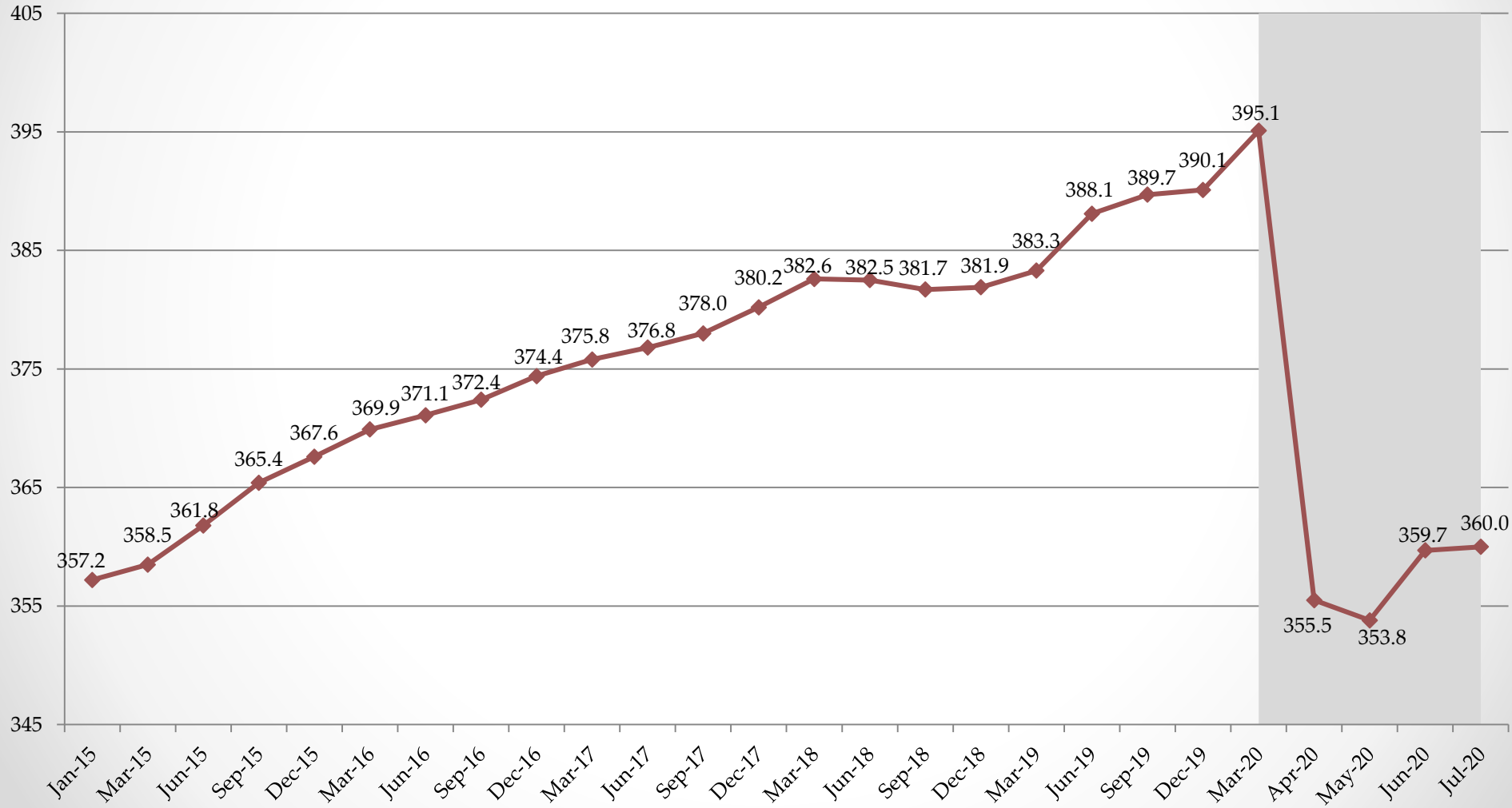




# Department of Employment Services

*Washington, DC's lead workforce development and labor agency*

**Employed D.C. Residents (Jan. 2015 - July 2020) (In Thousands)**

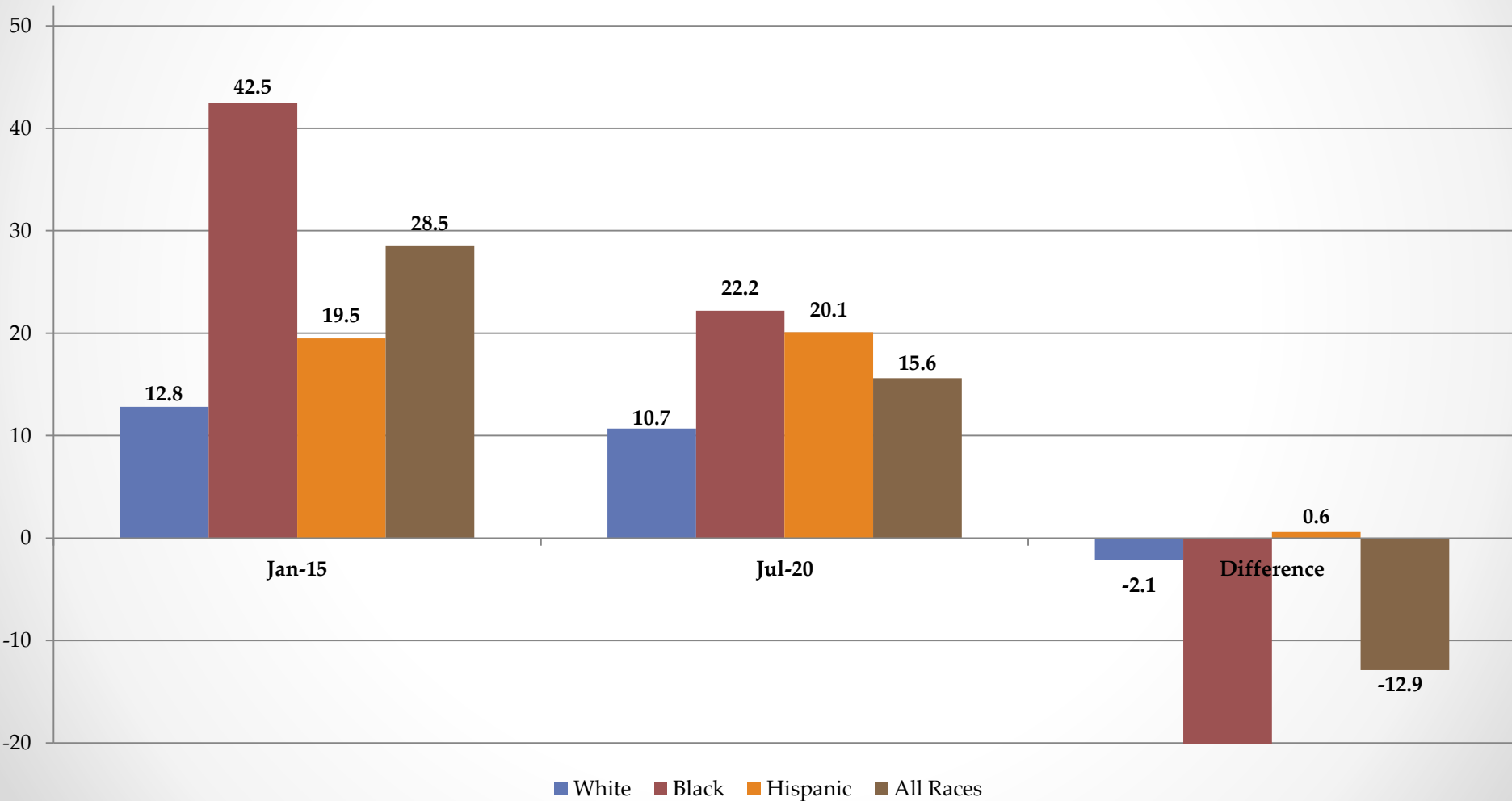




# Department of Employment Services

*Washington, DC's lead workforce development and labor agency*

Median Duration of Unemployment (in weeks) (Jan. 2015 - July 2020)

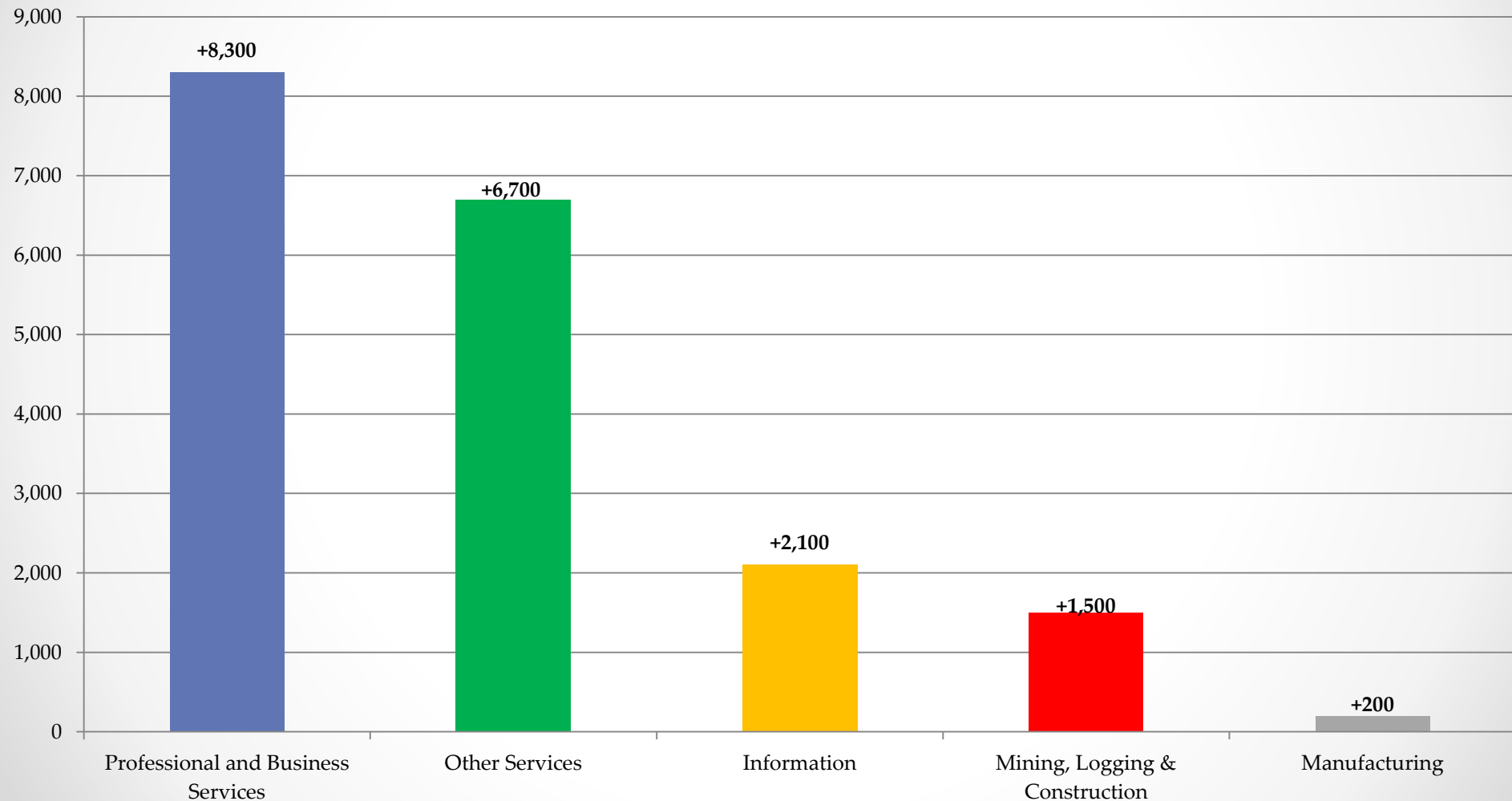




# Department of Employment Services

*Washington, DC's lead workforce development and labor agency*

Top 5 Industry with Highest Employment Increase (Jan.2015 – July 2020)

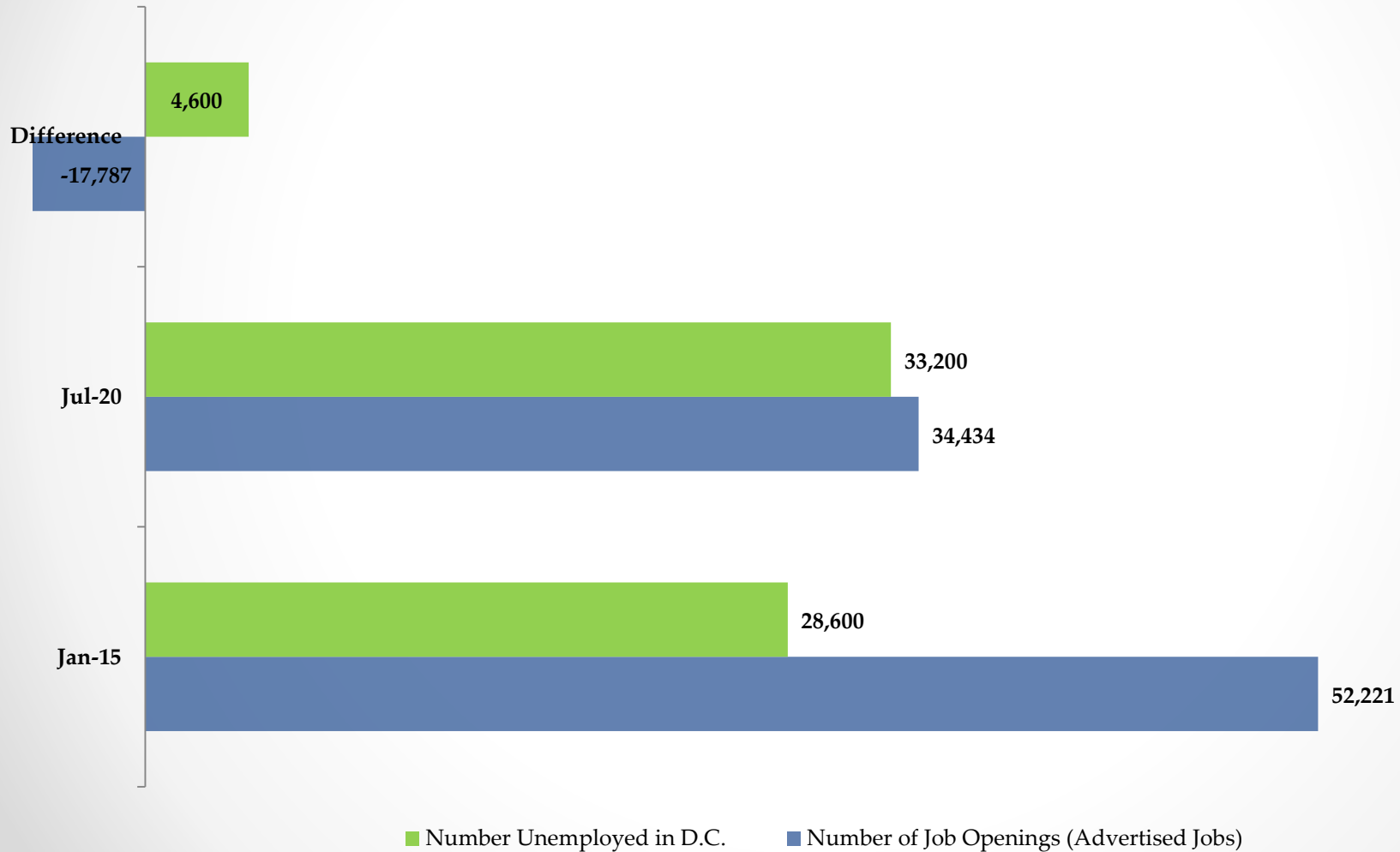




# Department of Employment Services

*Washington, DC's lead workforce development and labor agency*

Job Openings vs. Number of Unemployed DC Residents (Jan. 2015 - July 2020)

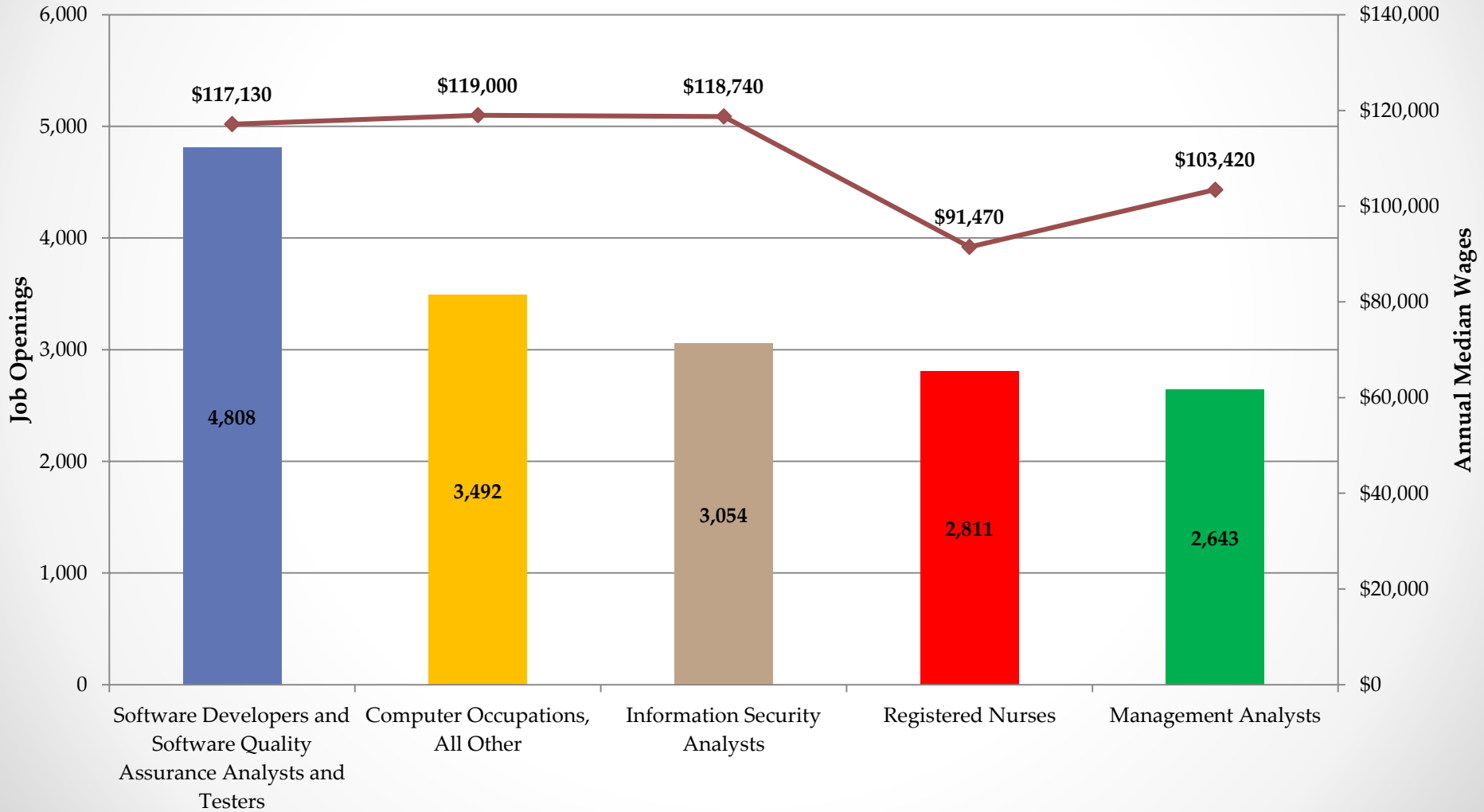




# Department of Employment Services

*Washington, DC's lead workforce development and labor agency*

**Top 5 Job Openings: January 2017 - July 2020 (Average Monthly Unique Job Postings)**

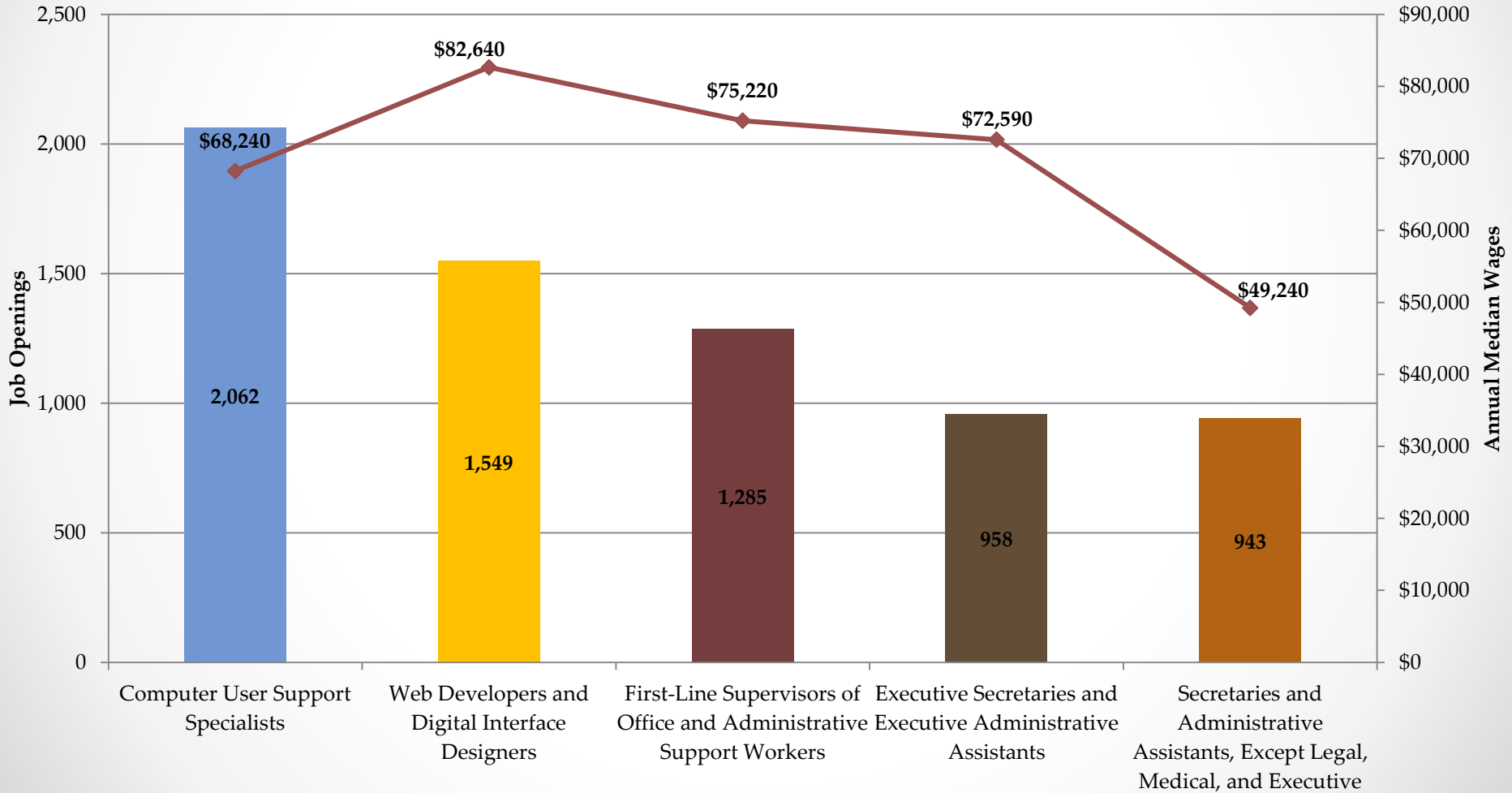




# Department of Employment Services

*Washington, DC's lead workforce development and labor agency*

**Top 5 Job Openings Requiring Less Than Bachelor's Degree: January 2017 - July 2020 (Avg Monthly Unique Job Postings)**







# Department of Employment Services

*Washington, DC's lead workforce development and labor agency*

---

## Contact Information

- Opeyemi Fasakin, Labor Economist
- Thomas Tsegaye, Labor Economist
- **Data Request:** <https://app.smartsheet.com/b/form/631658c092ef4395ab27b76716df8068>
- **Email:** [Imi.does@dc.gov](mailto:Imi.does@dc.gov)
- **Phone:** (202) 671-1633
- **Website:** [www.does.dc.gov](http://www.does.dc.gov)
- <http://does.dc.gov/page/labor-statistics>