



Department of Employment Services
Washington, DC's lead workforce development and labor agency

D.C. Labor Market Indicators: January 2015 - July 2022

Dr. Unique Morris-Hughes, Director

Alan Karnofsky, Chief Strategist for
Education and Workforce Innovation

Dr. Rebati Mendali, Chief Economist/Associate
Director

**Prepared by the Office of Labor Market Research and
Performance**



Department of Employment Services

Washington, DC's lead workforce development and labor agency

Highlights

• From January 2015 to July 2022:

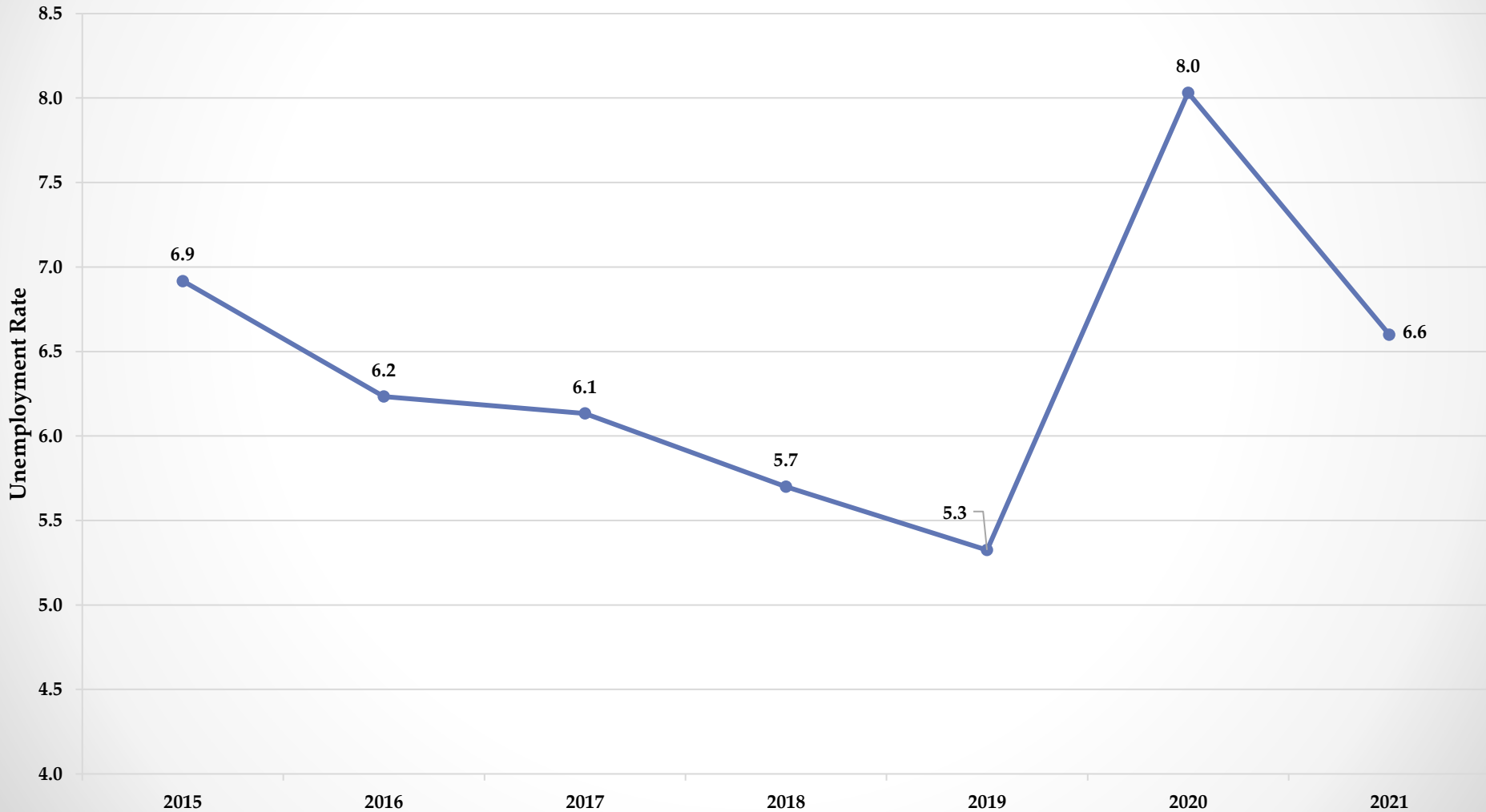
- ❖ The unemployment rate in DC decreased by **2.2** percentage points from **7.4%** to **5.2%**;
- ❖ Unemployment rate in Ward 7 & Ward 8 decreased by **2.2** percentage points (**12.9%** to **10.7%**) and **4.7** percentage points (**16.1%** to **11.4%**) respectively;
- ❖ Total number of DC residents that are employed increased by **8,500**;
- ❖ Total number of jobs in DC increased by **30,800**;
- ❖ Initial monthly unemployment insurance benefits claimants increased by **5.0%**;
- ❖ Total number of unemployed DC residents decreased by **8,500** people;
- ❖ The average weekly median duration of unemployment for Black and African American decreased by **13.8** weeks;
- ❖ The private sector total number of payroll jobs in the District increased by **21,300** jobs (**4.16%** increase) from January 2015;
- ❖ Professional and Business Services has the highest employment increase among industries with employment increased by **19,300** since January 2015;
- ❖ The highest in-demand occupation is Software Developers with an average monthly opening of **1,385** jobs;
- ❖ The highest in-demand occupation requiring less than a bachelor's degree is Sales Representatives, Wholesale and Manufacturing with an average monthly opening of **524** jobs.



Department of Employment Services

Washington, DC's lead workforce development and labor agency

DC Annual Average Unemployment Rate (2015-2021)

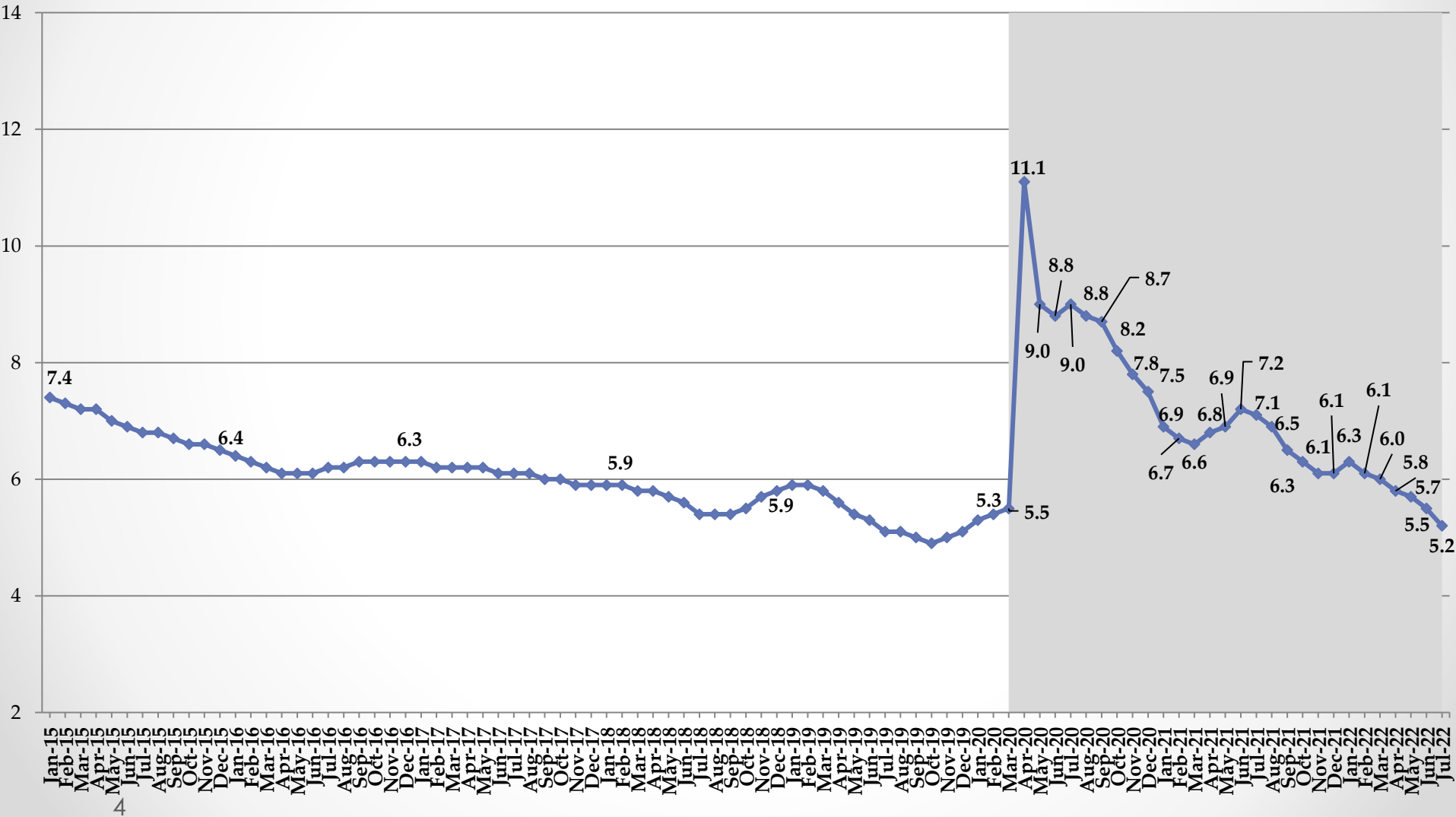




Department of Employment Services

Washington, DC's lead workforce development and labor agency

The District's Monthly Unemployment Rate: Jan. 2015 - July 2022

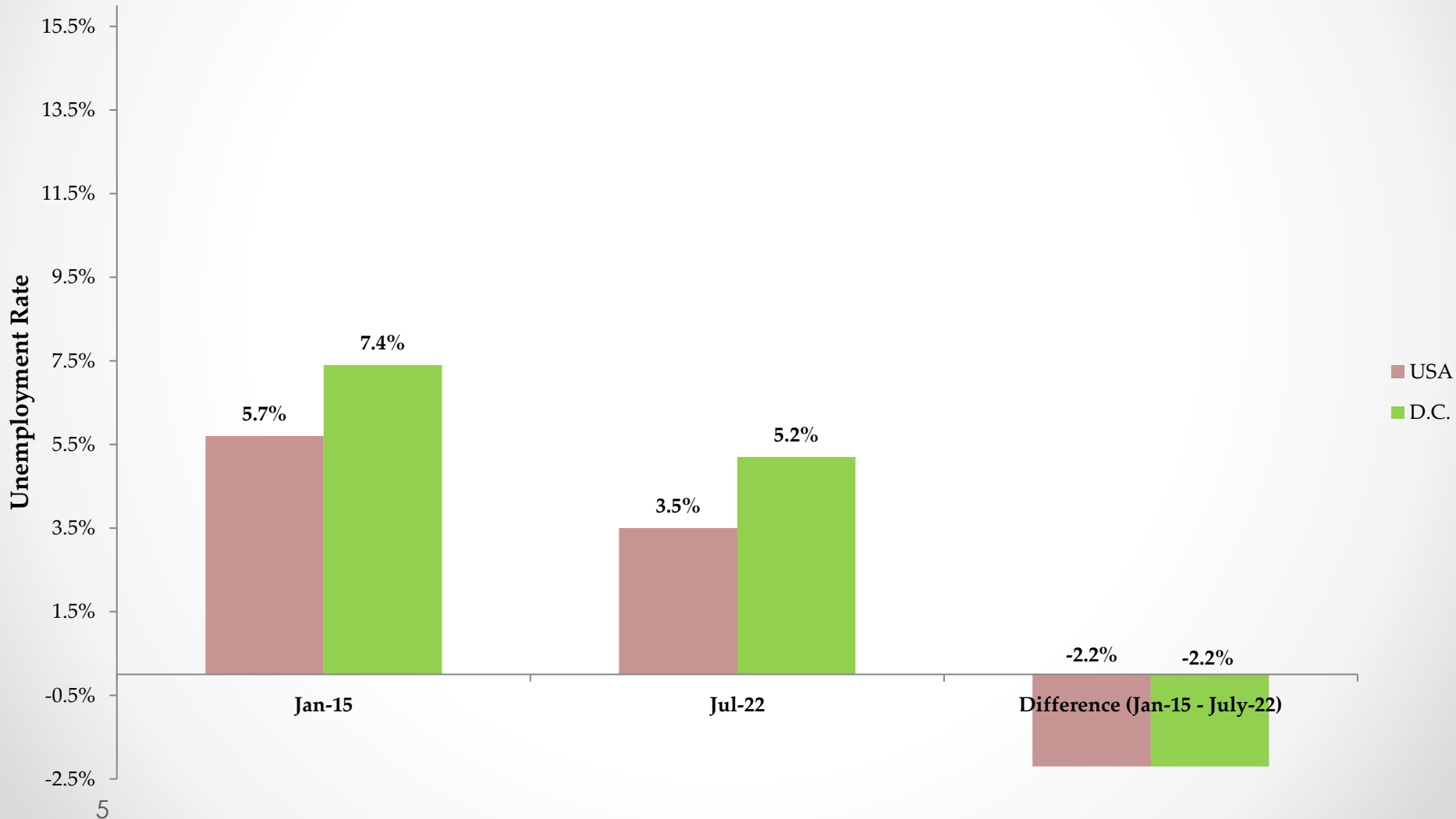




Department of Employment Services

Washington, DC's lead workforce development and labor agency

Unemployment Rate (January 2015 - July 2022)

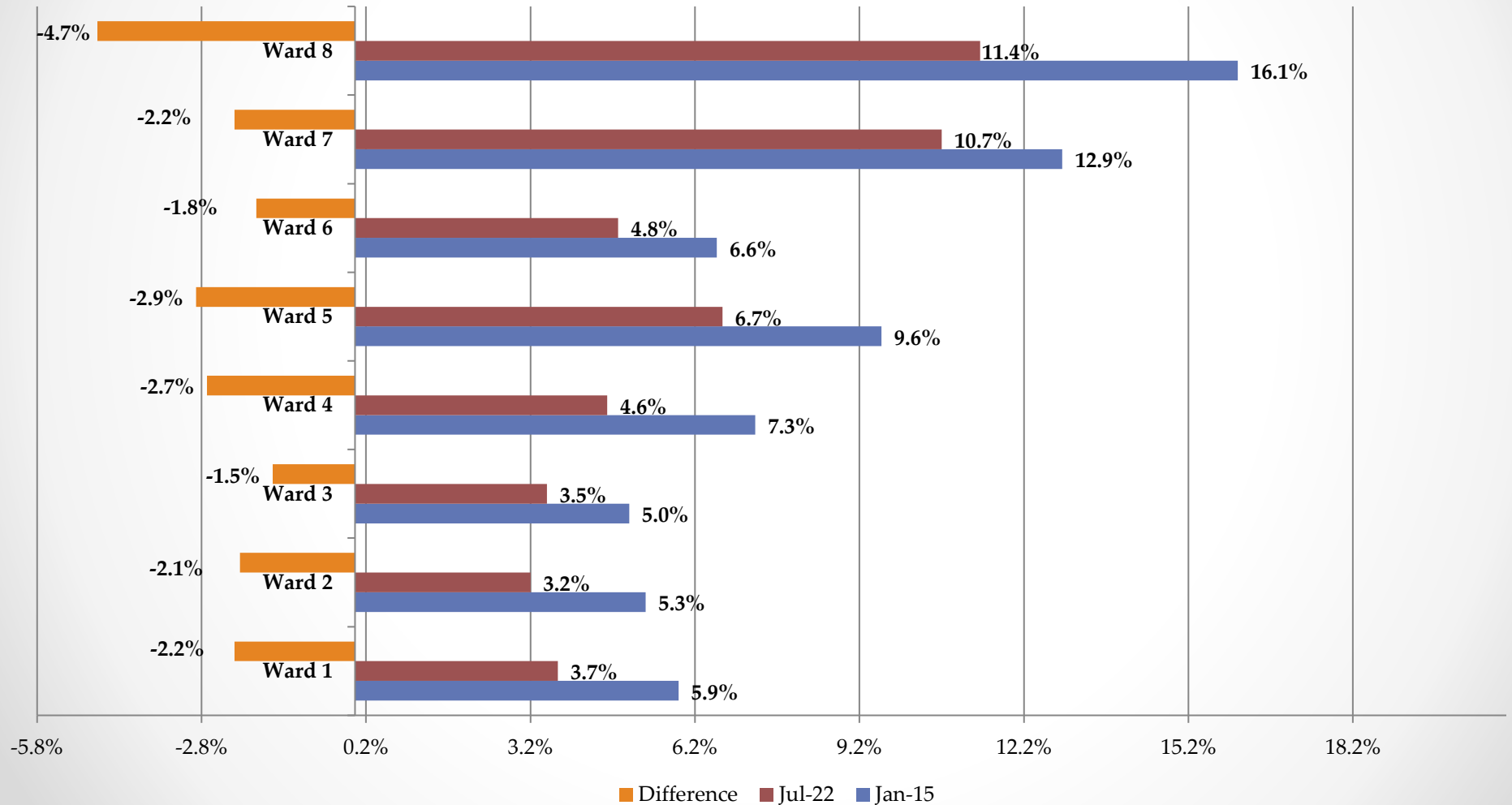




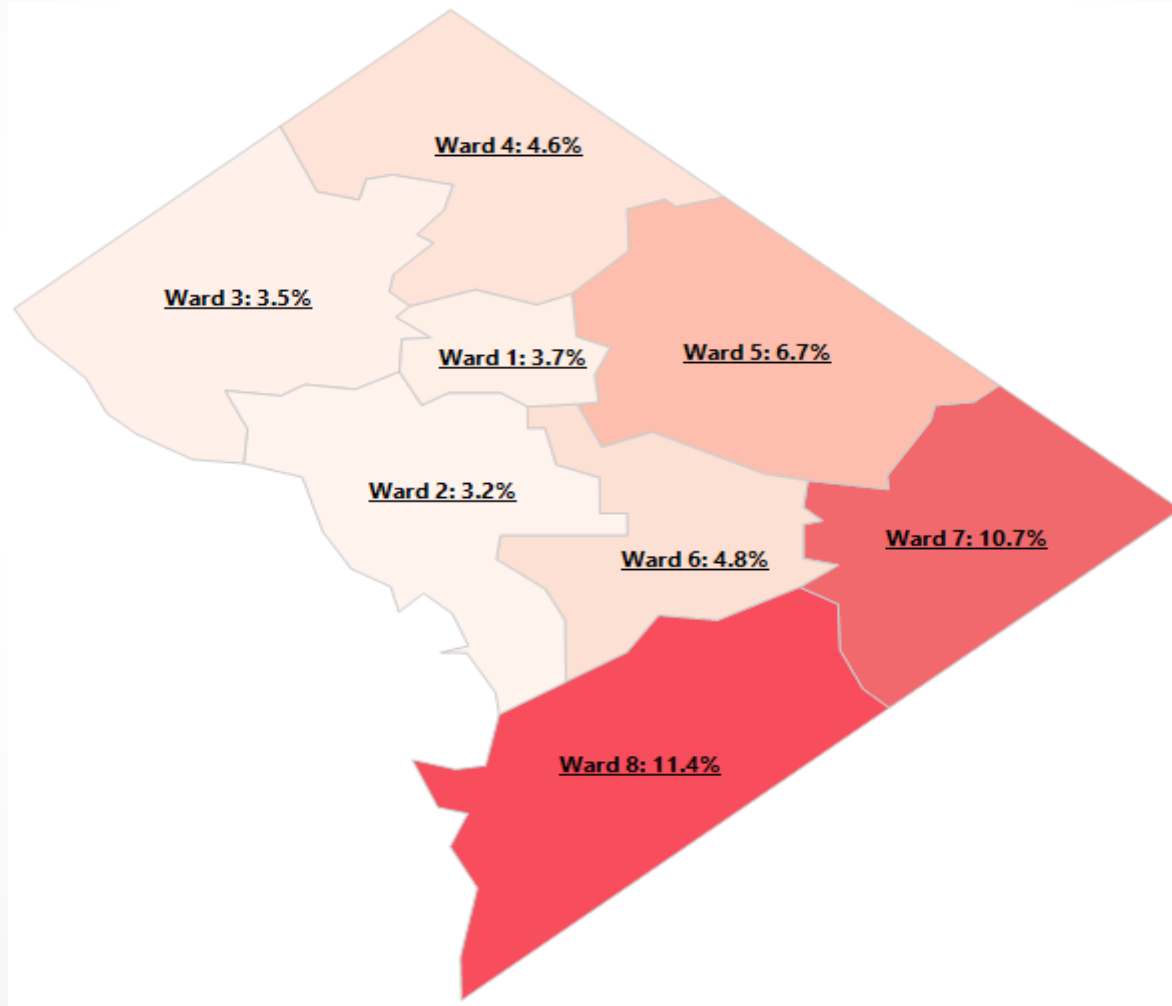
Department of Employment Services

Washington, DC's lead workforce development and labor agency

Unemployment Rate by Ward (January 2015 - July 2022)



Unemployment Rate by Ward: July 2022

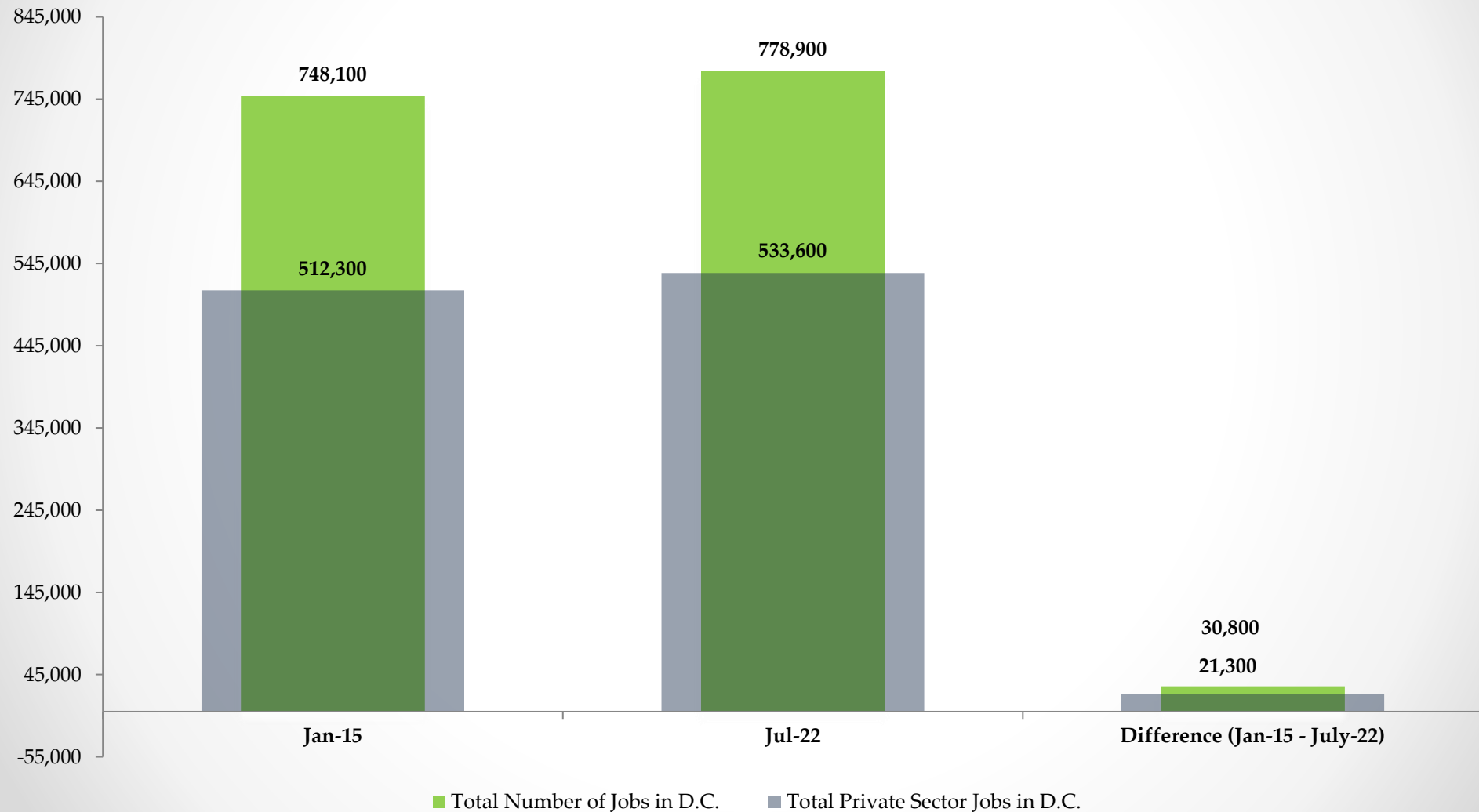




Department of Employment Services

Washington, DC's lead workforce development and labor agency

Total Number of Jobs and Total Private Sector Jobs in DC (Jan. 2015 - July 2022)

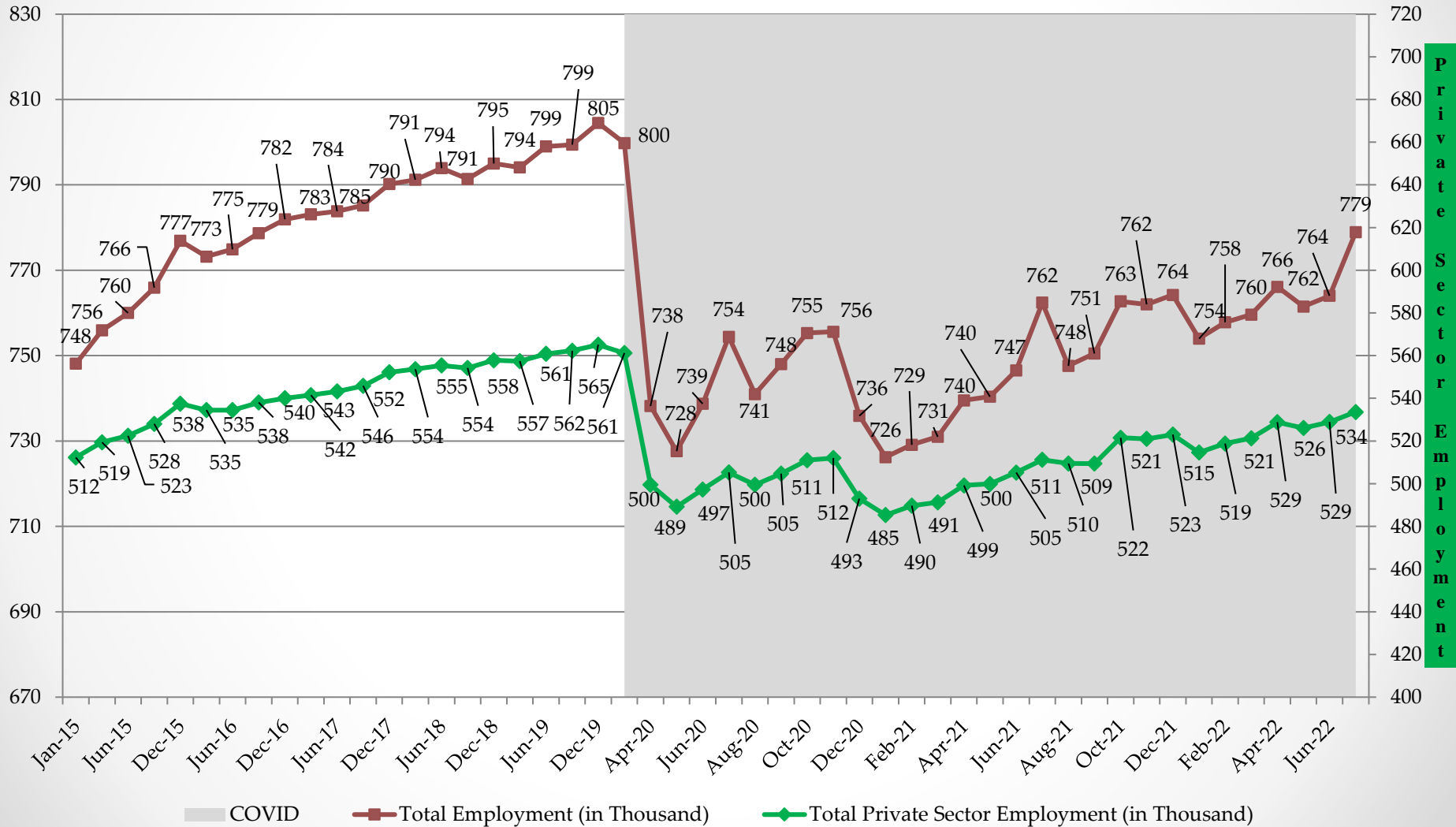




Department of Employment Services

Washington, DC's lead workforce development and labor agency

Total Employment and Private Sector Employment in D.C. (Jan.2015 - July 2022 (In Thousands))

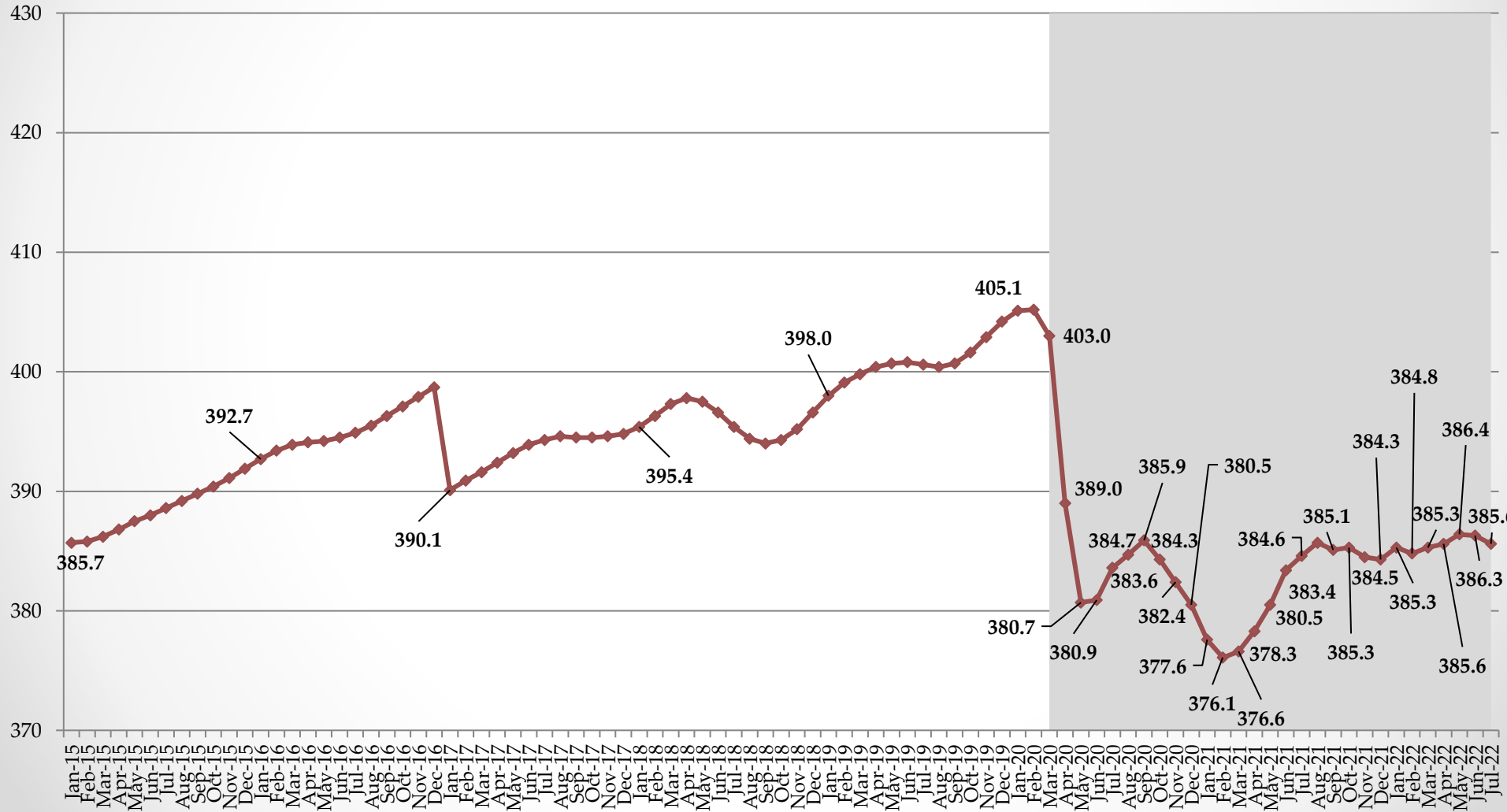




Department of Employment Services

Washington, DC's lead workforce development and labor agency

The District's Labor Force (Jan. 2015 - July 2022) (In Thousands)

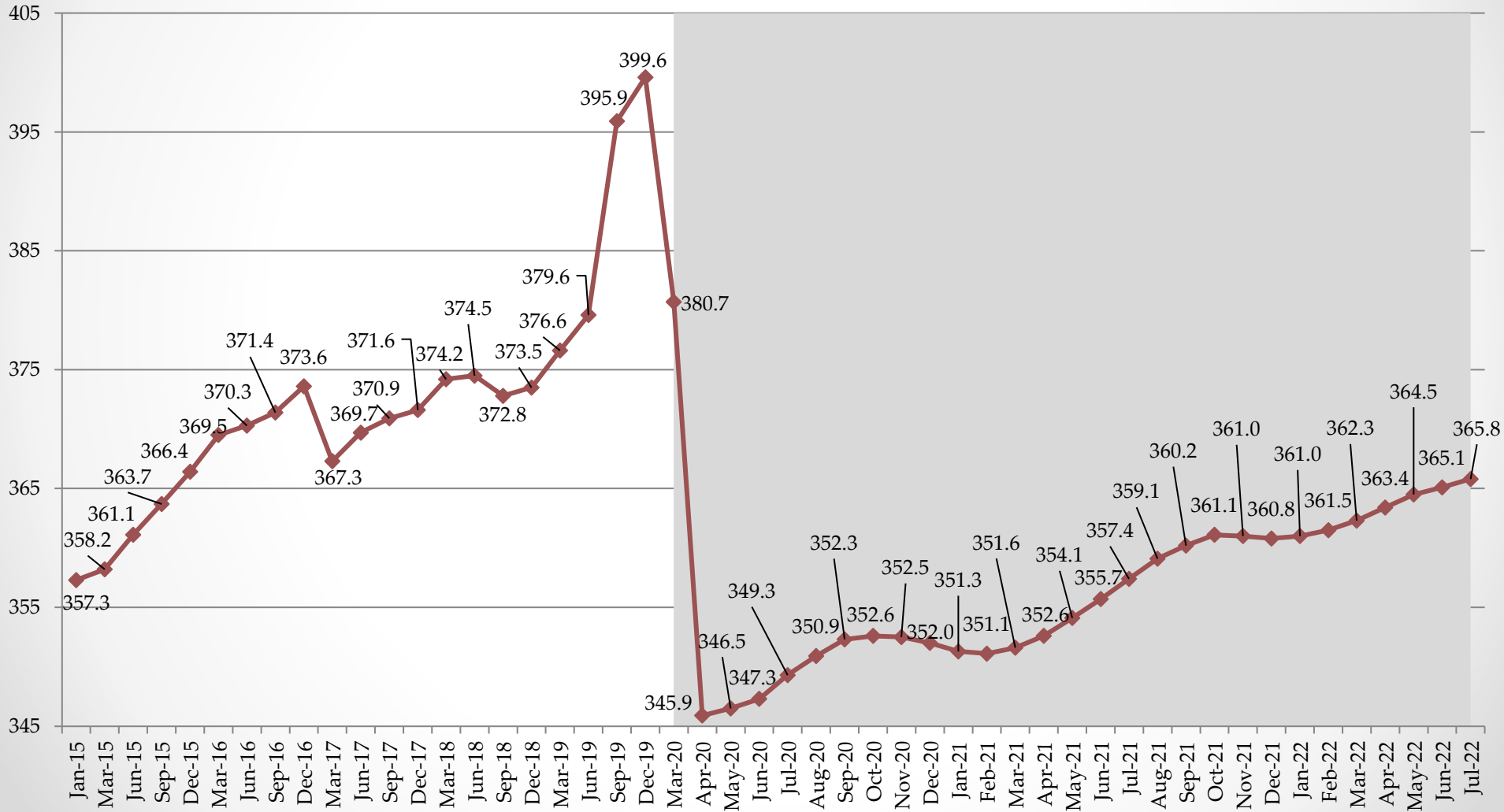




Department of Employment Services

Washington, DC's lead workforce development and labor agency

Employed D.C. Residents (Jan. 2015 - July 2022) (In Thousands)

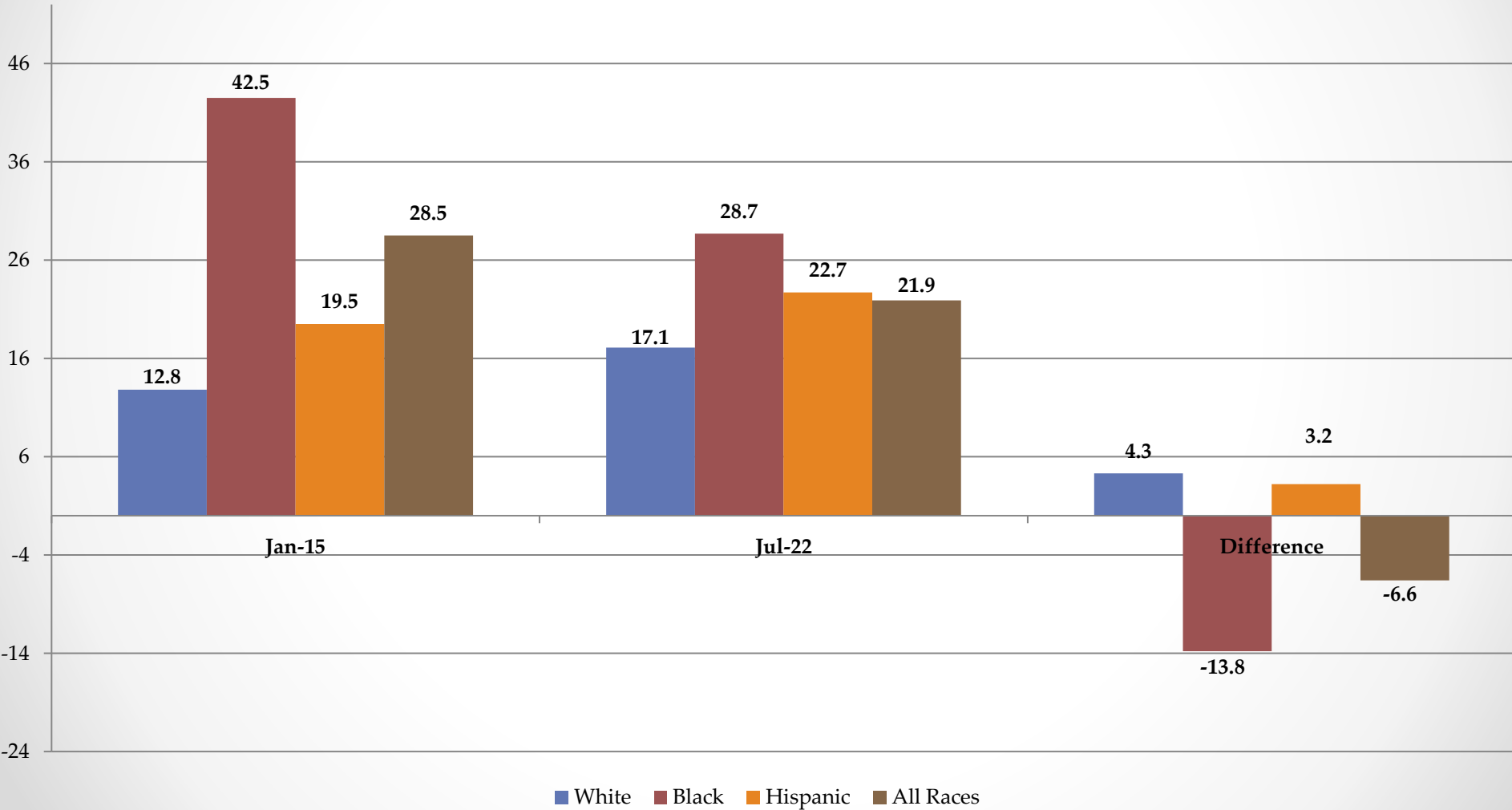




Department of Employment Services

Washington, DC's lead workforce development and labor agency

Median Duration of Unemployment (in weeks) (Jan. 2015 - July 2022)

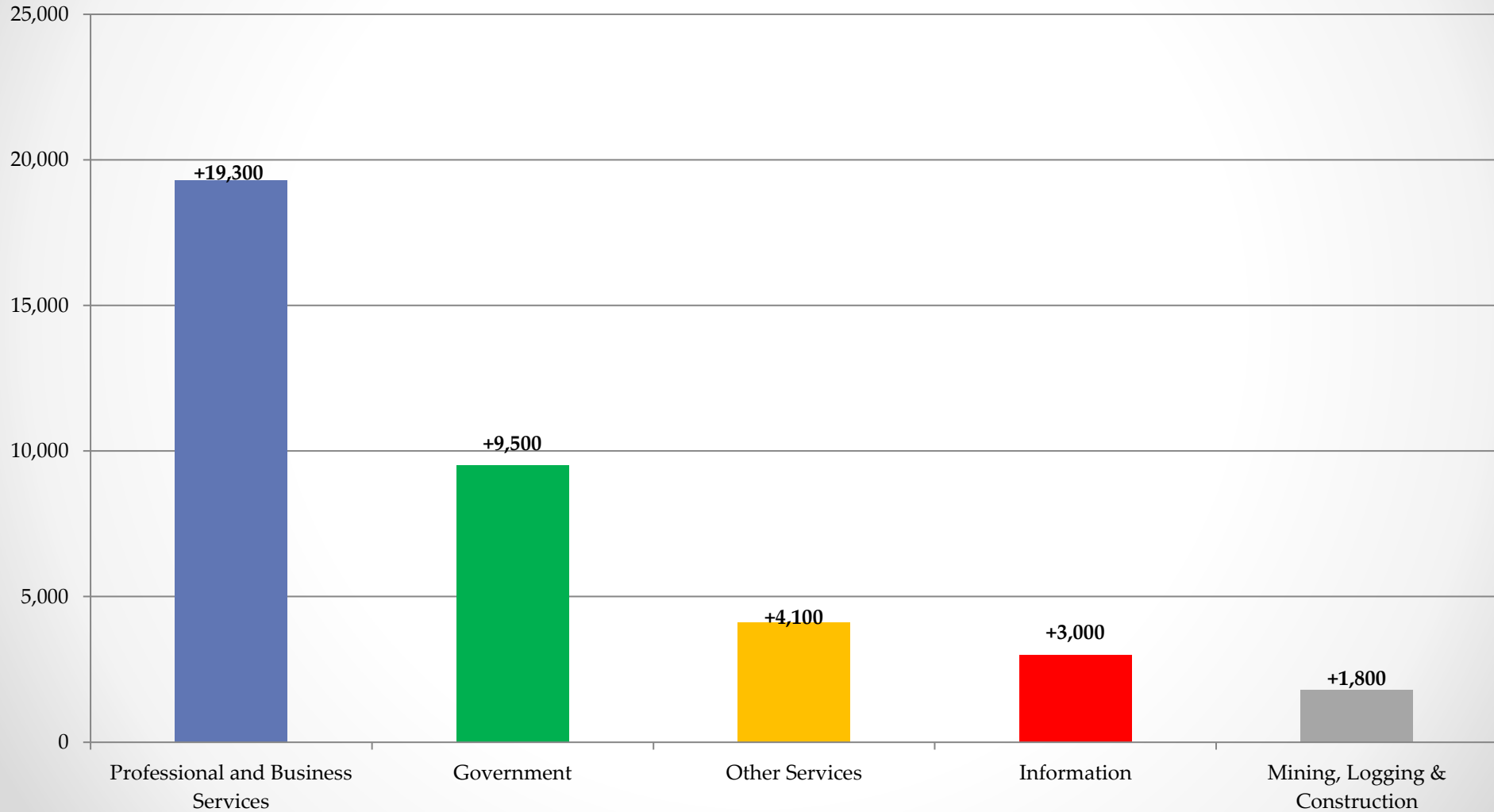




Department of Employment Services

Washington, DC's lead workforce development and labor agency

Top 5 Industry with Highest Employment Increase (Jan.2015 – July 2022)





Department of Employment Services

Washington, DC's lead workforce development and labor agency

Job Openings vs. Number of Unemployed DC Residents (Jan. 2015 - July 2022)

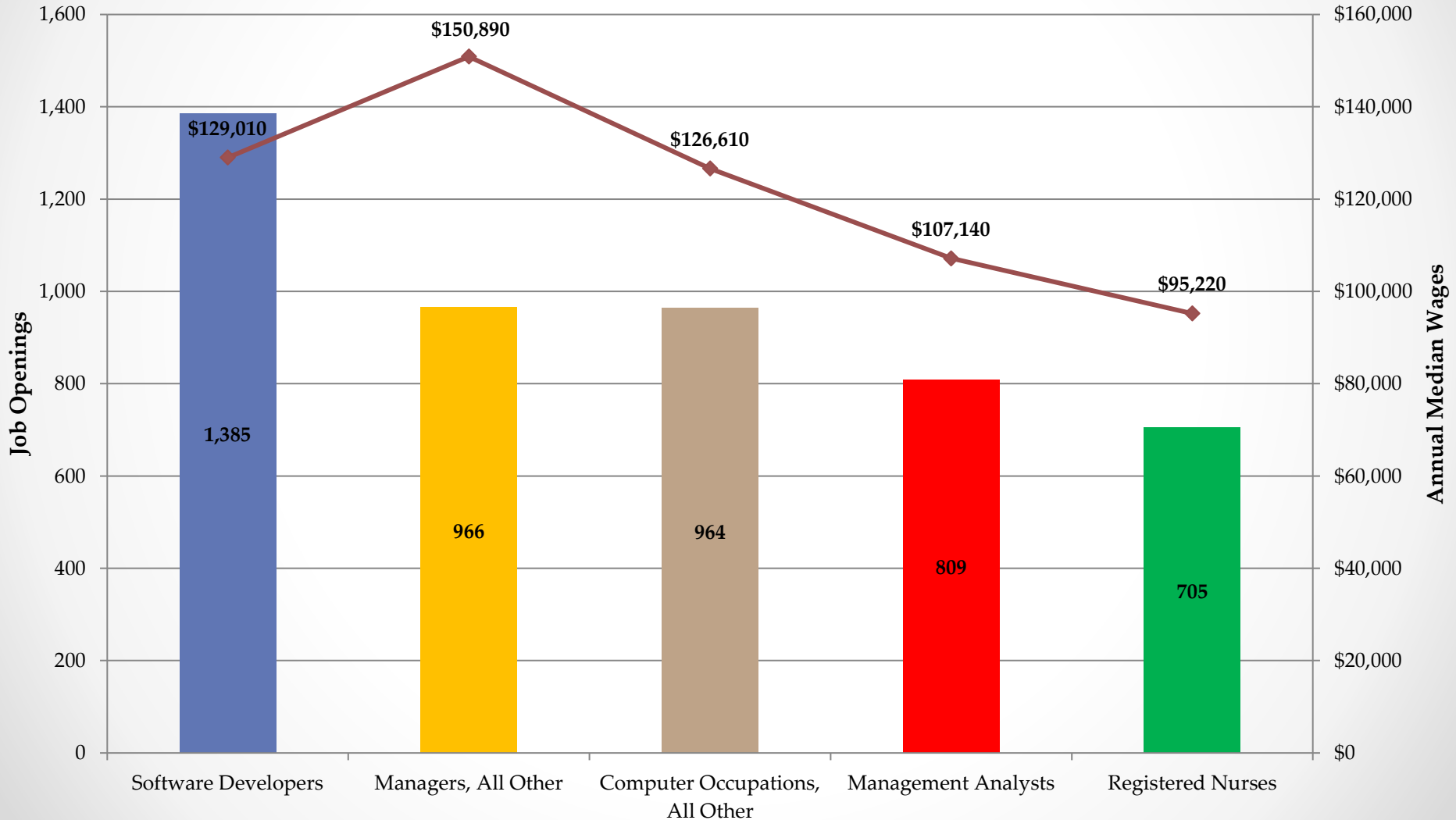




Department of Employment Services

Washington, DC's lead workforce development and labor agency

Top 5 Job Openings: January 2020 - July 2022 (Average Monthly Unique Job Postings)

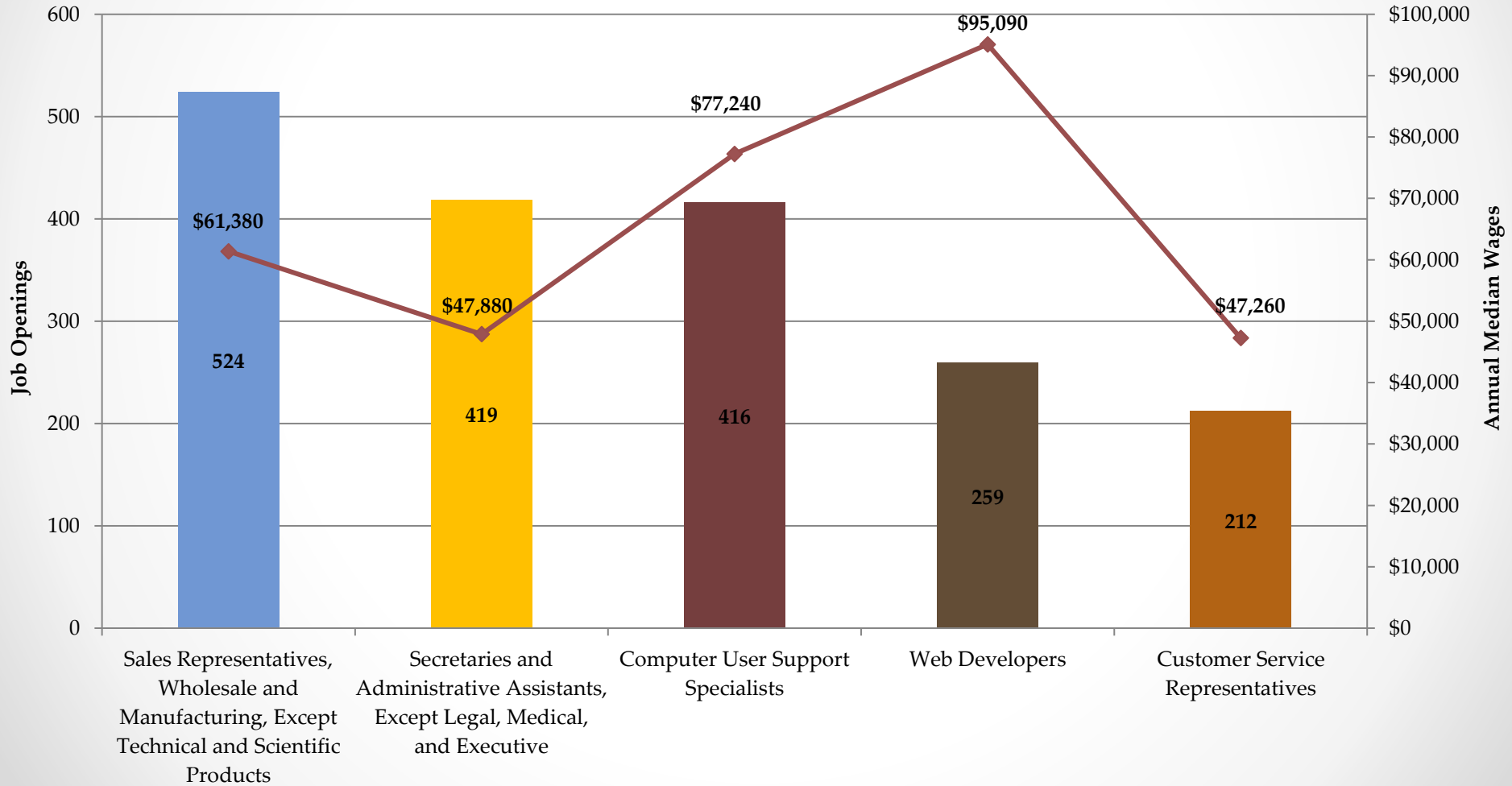




Department of Employment Services

Washington, DC's lead workforce development and labor agency

Top 5 Job Openings Requiring Less Than Bachelor's Degree: January 2020 - July 2022 (Avg Monthly Unique Job Postings)





Department of Employment Services

Washington, DC's lead workforce development and labor agency

This workforce product was funded by a grant awarded by the U.S. Department of Labor's Employment and Training Administration. The product was created by the recipient and does not necessarily reflect the official position of the U.S. Department of Labor. The U.S. Department of Labor makes no guarantees, warranties, or assurances of any kind, express or implied, with respect to such information, including any information on linked sites and including, but not limited to, accuracy of the information or its completeness, timeliness, usefulness, adequacy, continued availability, or ownership. This product is copyrighted by the institution that created it. Internal use by an organization and/or personal use by an individual for non-commercial purposes is permissible. All other uses require the prior authorization of the copyright owner.



Department of Employment Services

Washington, DC's lead workforce development and labor agency

Contact Information

- Opeyemi Fasakin, Labor Economist
- Thomas Tsegaye, Labor Economist
- Katherine Rainone , Labor Economist
- **Data Request:** app.smartsheet.com/b/form/6558fe3e5bee43ceb0238229b0c61224
- **Email:** imi.does@dc.gov
- **Phone:** (202) 671-1633
- **Website:** www.does.dc.gov
- <http://does.dc.gov/page/labor-statistics>