



**Department of Employment Services**  
*Washington, DC's lead workforce development and labor agency*

---

# D.C. Labor Market Indicators: June 2019

Dr. Unique Morris-Hughes, Director

Ta-Tanisha Wallace, Chief Strategist for  
Education and Workforce Innovation

Saikou A. Diallo, Chief Economist

**Prepared by the Office of Labor Market Research and  
Performance**



# Department of Employment Services

*Washington, DC's lead workforce development and labor agency*

---

## Highlights

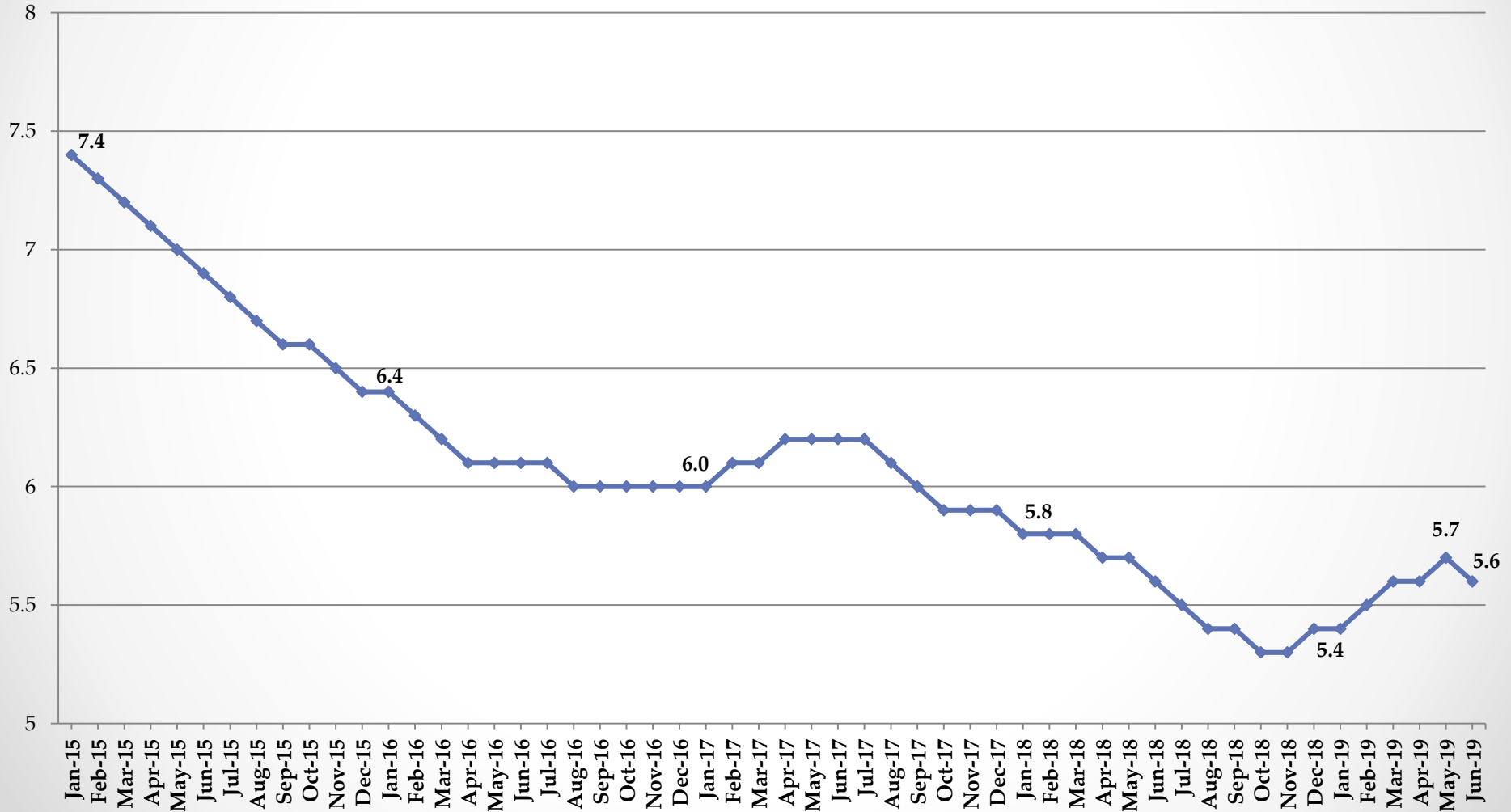
- From January 2015 to June 2019:
  - ❖ The unemployment rate in DC decreased by **1.8** percentage points (or **24.3%** decrease);
  - ❖ Unemployment rate in Ward 7 and Ward 8 decreased by **3.4** percentage points (**26.4%** decrease) and **4.0** percentage points (**24.8%** decrease) respectively;
  - ❖ Total number of DC residents that are employed increased by **31,700**;
  - ❖ Total number of jobs in DC increased by **43,600**;
  - ❖ Initial monthly unemployment insurance benefits claimants increased by **25.01%**;
  - ❖ Total number of unemployed DC residents decreased by **5,500** people;
  - ❖ In DC there are **2.2** jobs available (advertised) for **1** unemployed DC resident;
  - ❖ The average weekly median duration of unemployment for Black and African American decreased by **20.5** weeks;
  - ❖ The private sector total number of payroll jobs in the District increased by **41,000** new jobs or **7.88%** increase from January 2015;
  - ❖ Leisure and Hospitality has the highest employment increase by industry with **12,900** **since January 2015**;
  - ❖ The highest in-demand occupation is Software Developers, Applications with an average monthly opening of **3,697**;
  - ❖ The highest in-demand occupation requiring less than a bachelor's degree is Computer User Support Specialists with an average monthly opening of **1,884**.



# Department of Employment Services

*Washington, DC's lead workforce development and labor agency*

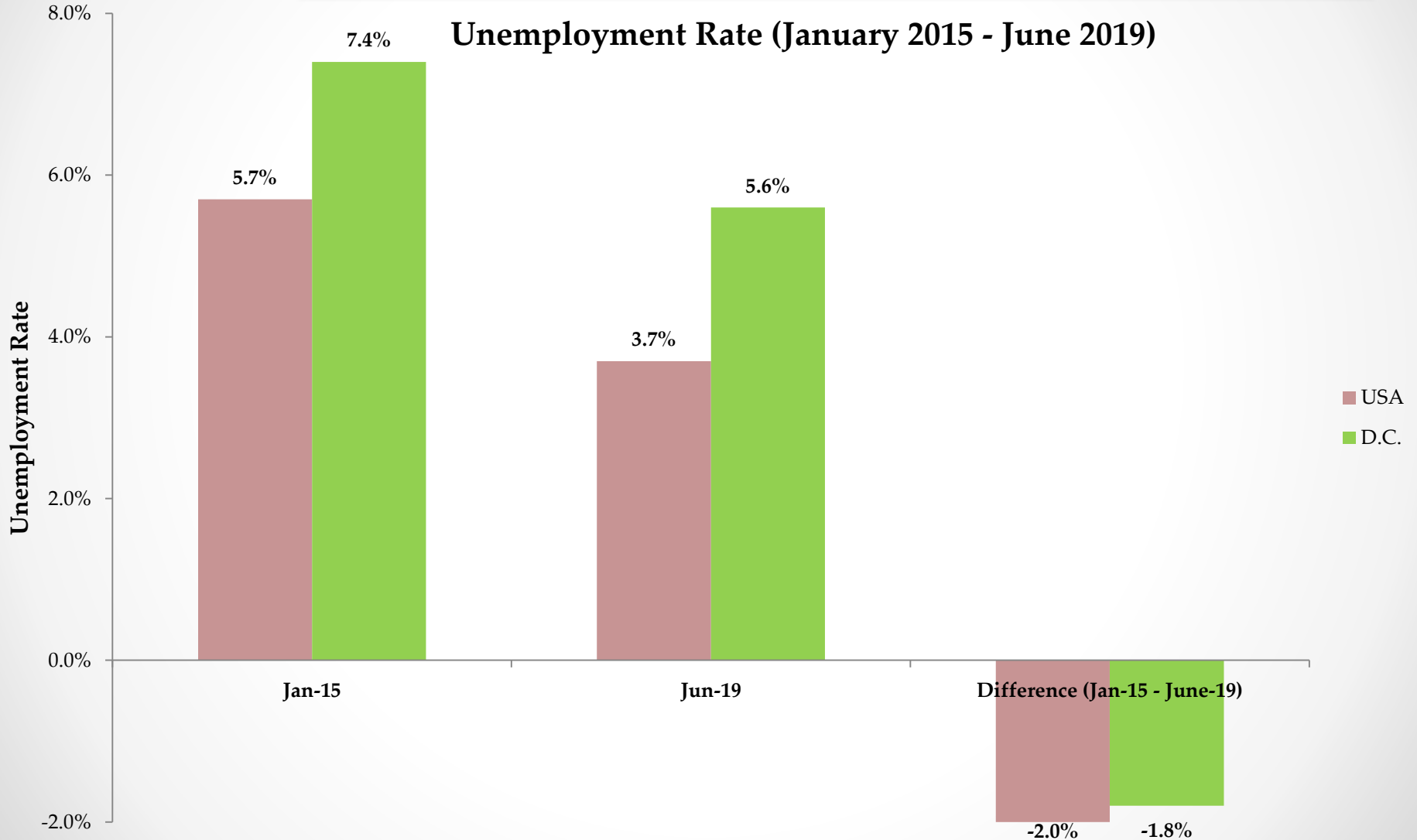
The District's Monthly Unemployment Rate: Jan. 2015 - June 2019





# Department of Employment Services

Washington, DC's lead workforce development and labor agency

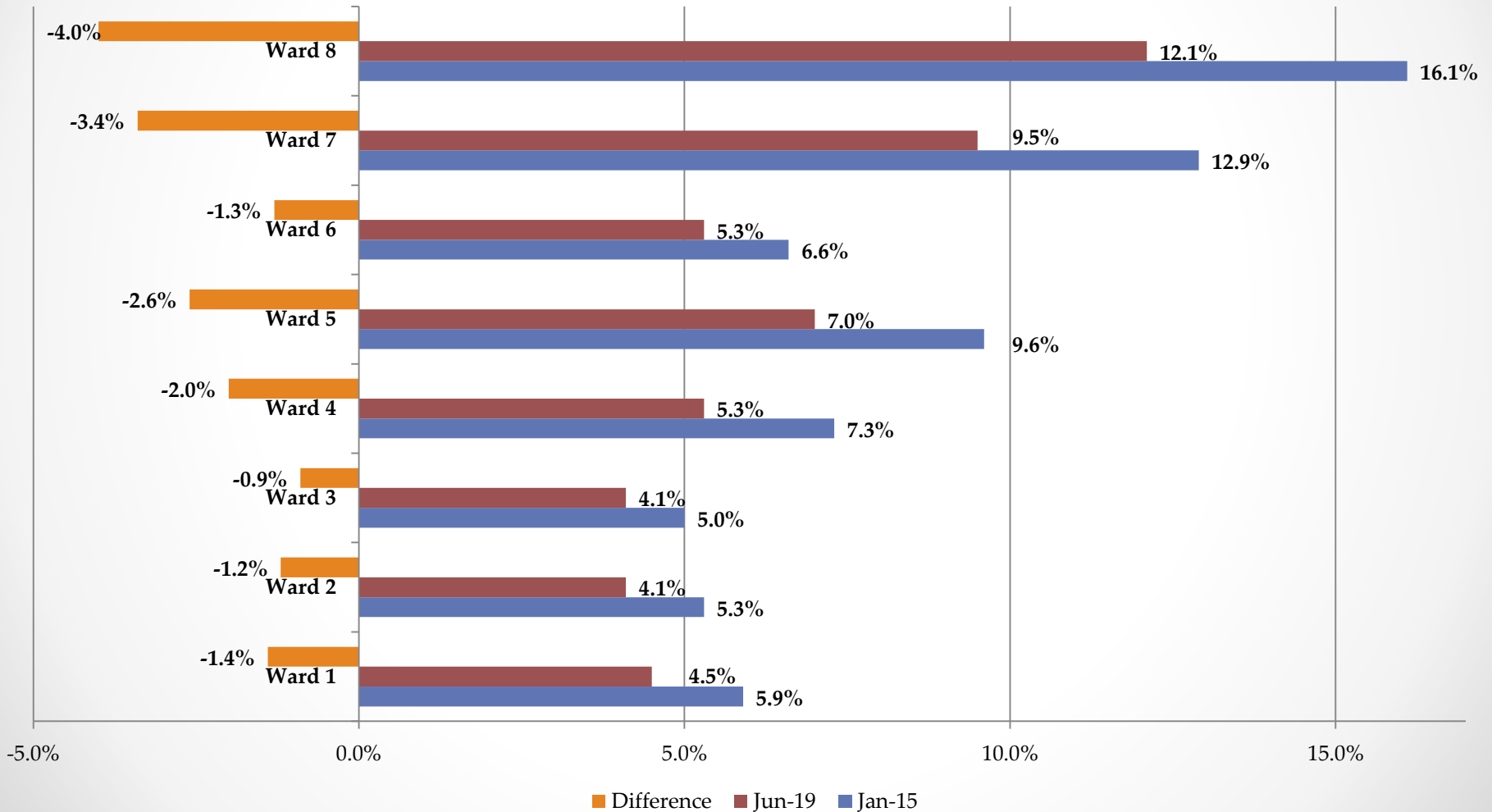




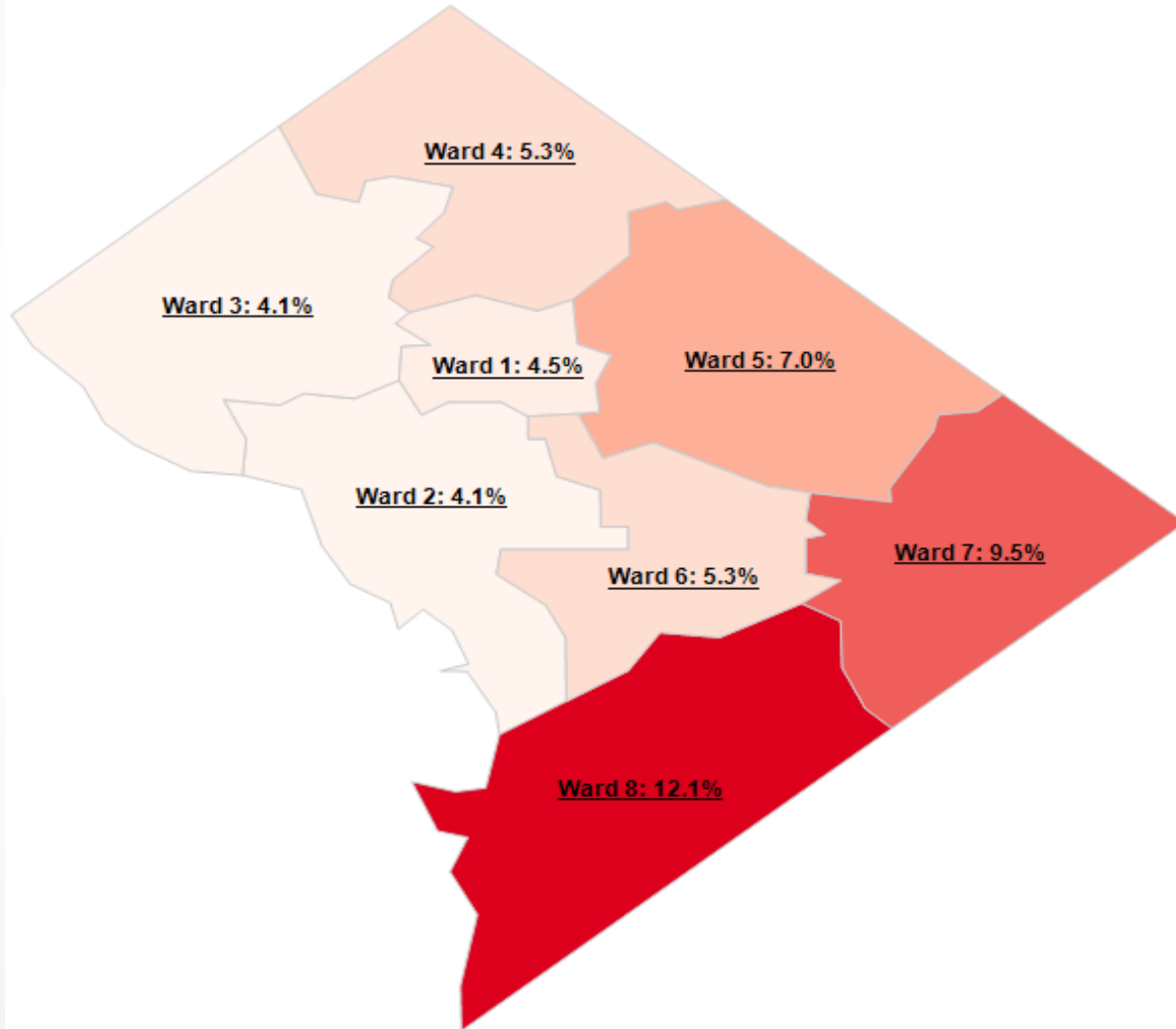
# Department of Employment Services

*Washington, DC's lead workforce development and labor agency*

## Unemployment Rate by Ward (January 2015 - June 2019)



## Unemployment Rate by Ward: June 2019

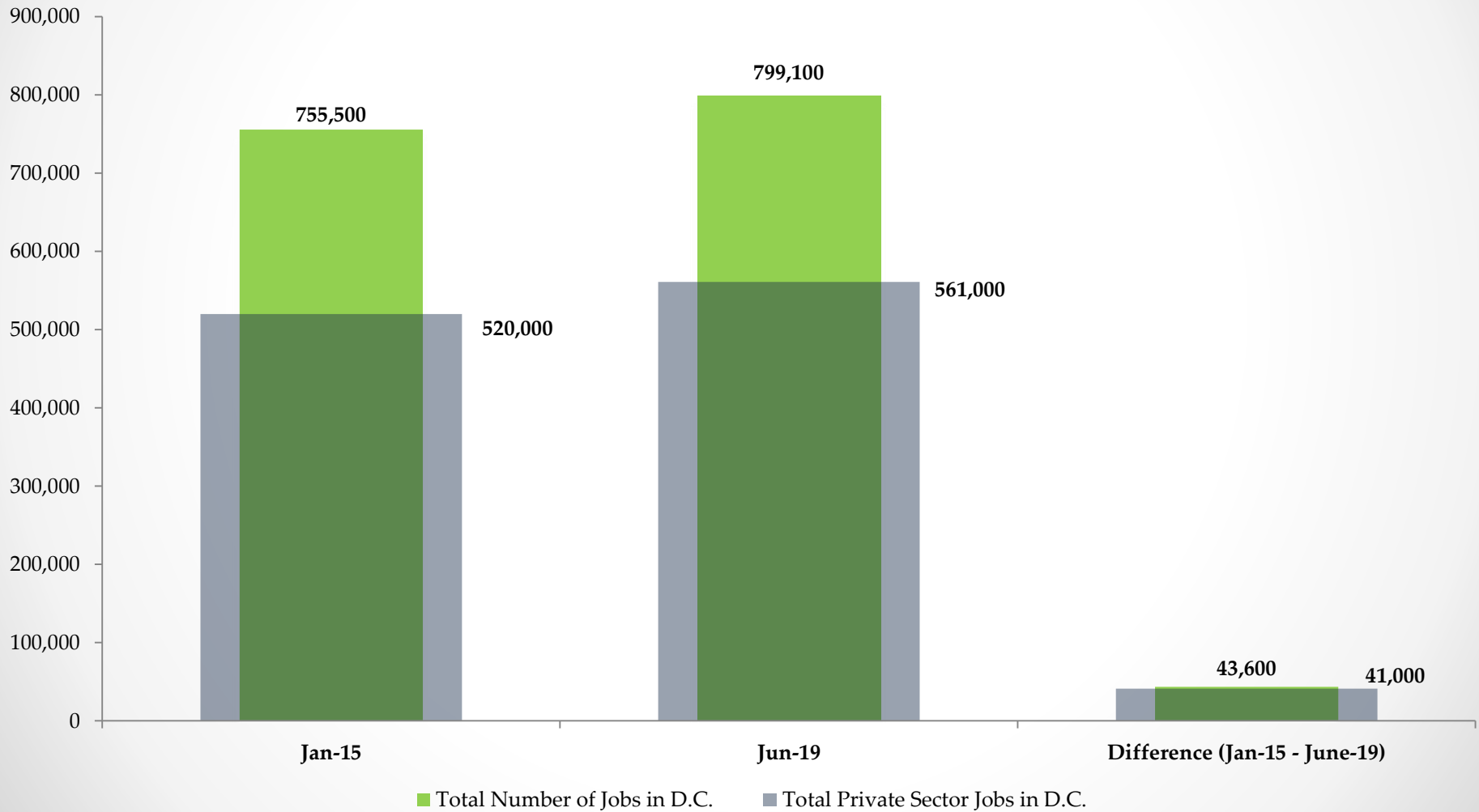




# Department of Employment Services

*Washington, DC's lead workforce development and labor agency*

Total Number of Jobs and Total Private Sector Jobs in DC (Jan. 2015 - June 2019)

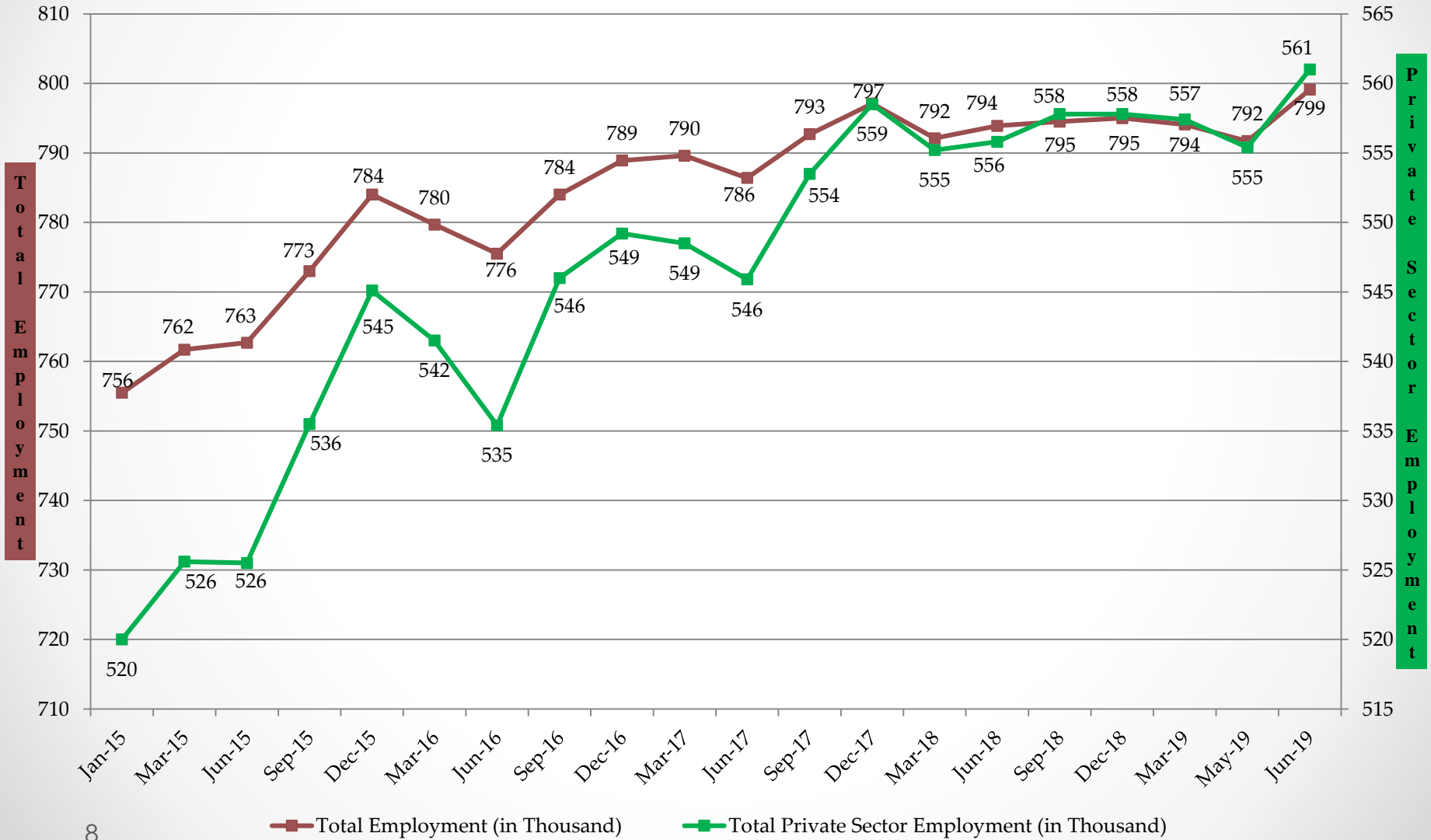




# Department of Employment Services

Washington, DC's lead workforce development and labor agency

Total Employment and Private Sector Employment in D.C. (Jan.2015 - June 2019) (In Thousands)



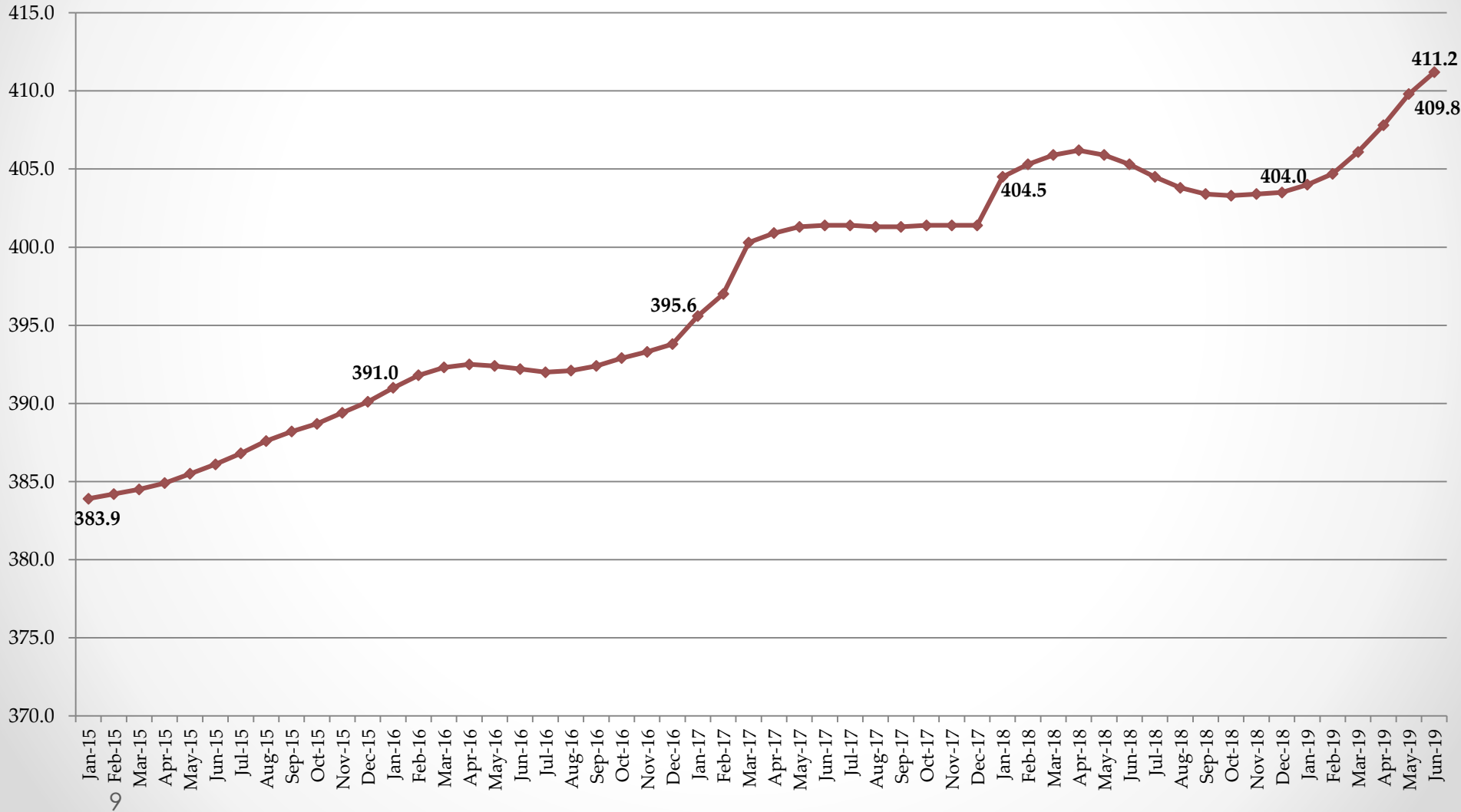




# Department of Employment Services

*Washington, DC's lead workforce development and labor agency*

The District's Labor Force (Jan. 2015 - June 2019) (In Thousands)

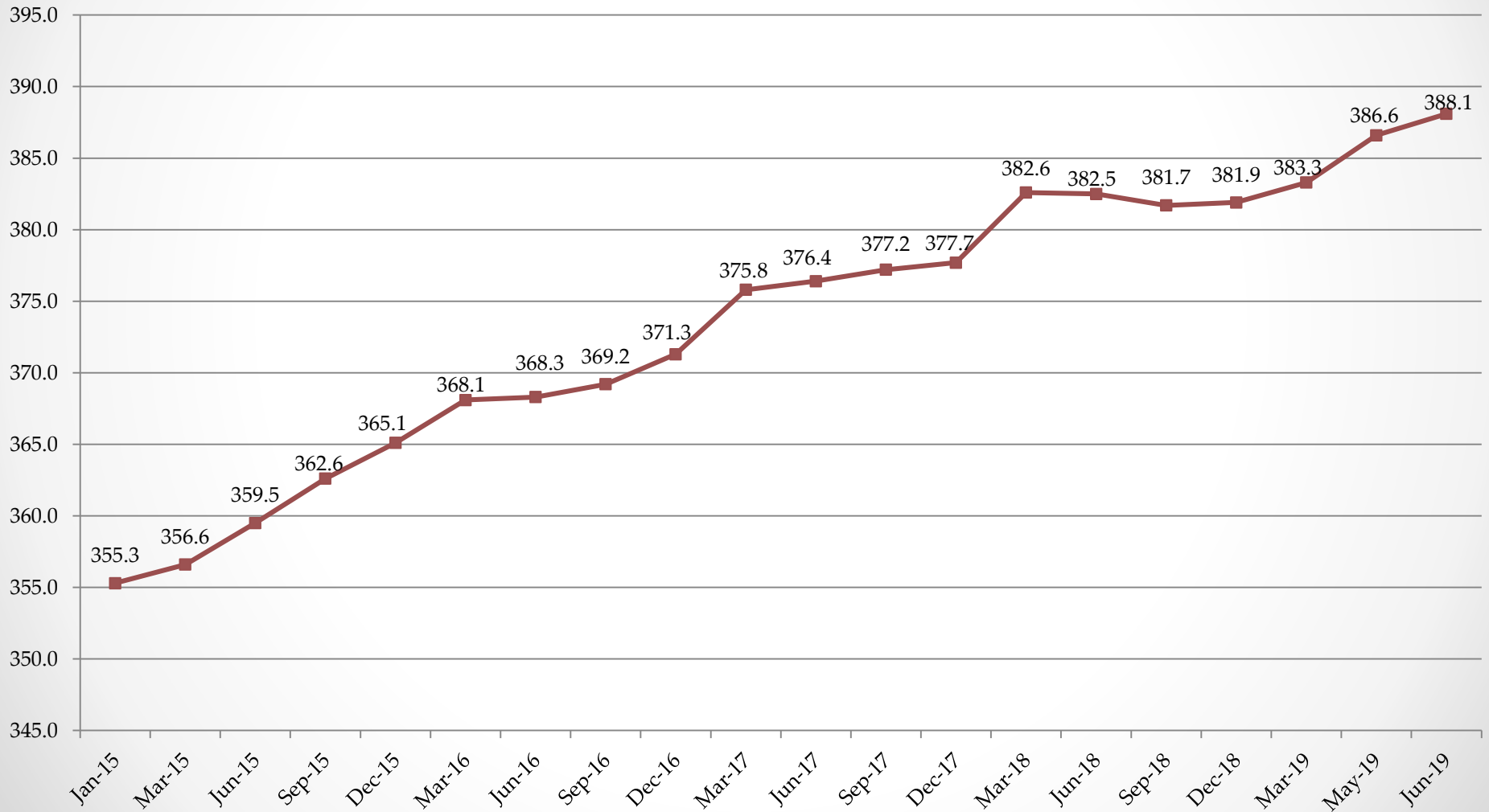




# Department of Employment Services

*Washington, DC's lead workforce development and labor agency*

Employed D.C. Residents (Jan. 2015 - June 2019) (In Thousands)

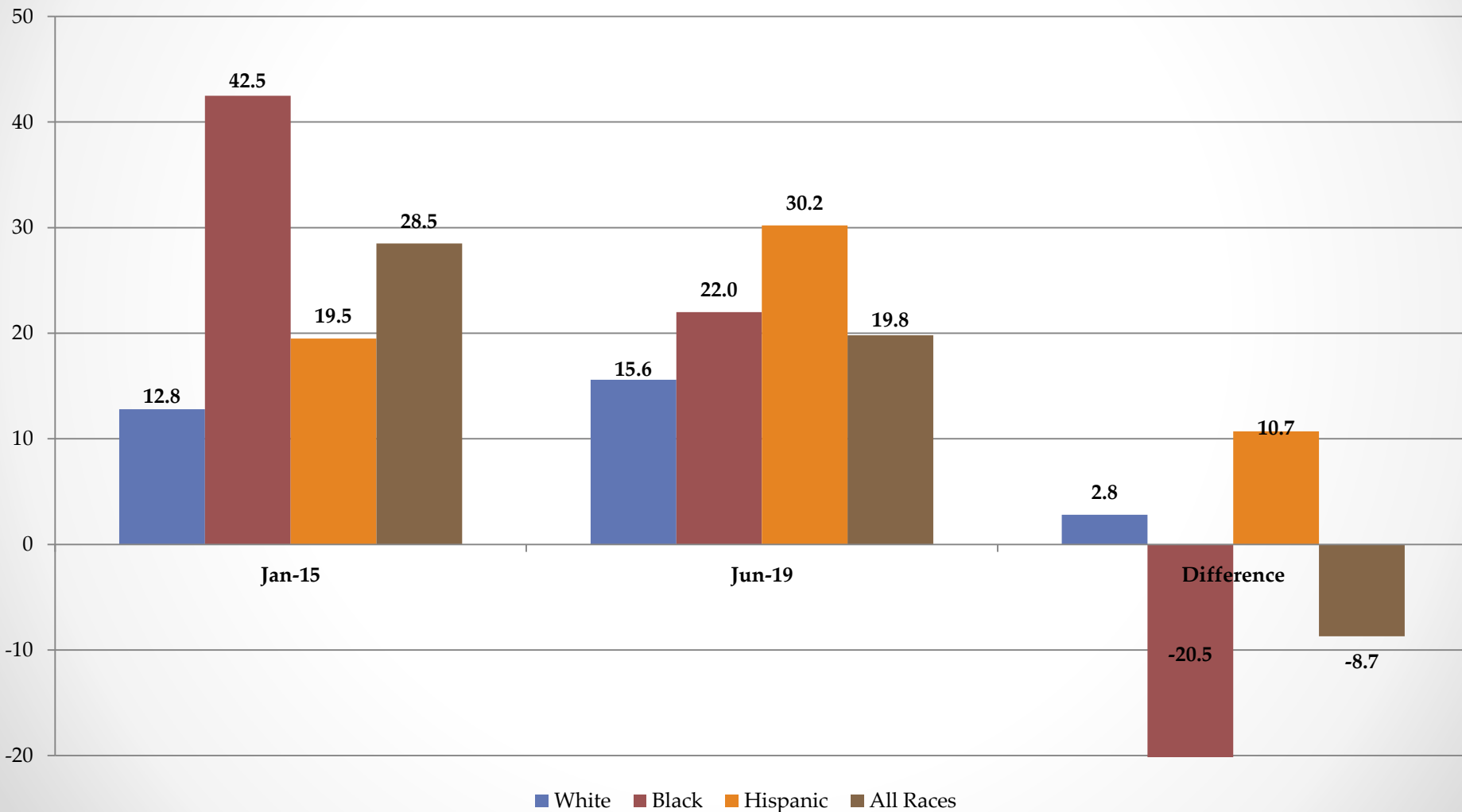




# Department of Employment Services

Washington, DC's lead workforce development and labor agency

### Median Duration of Unemployment (in weeks) (Jan. 2015 - June 2019)

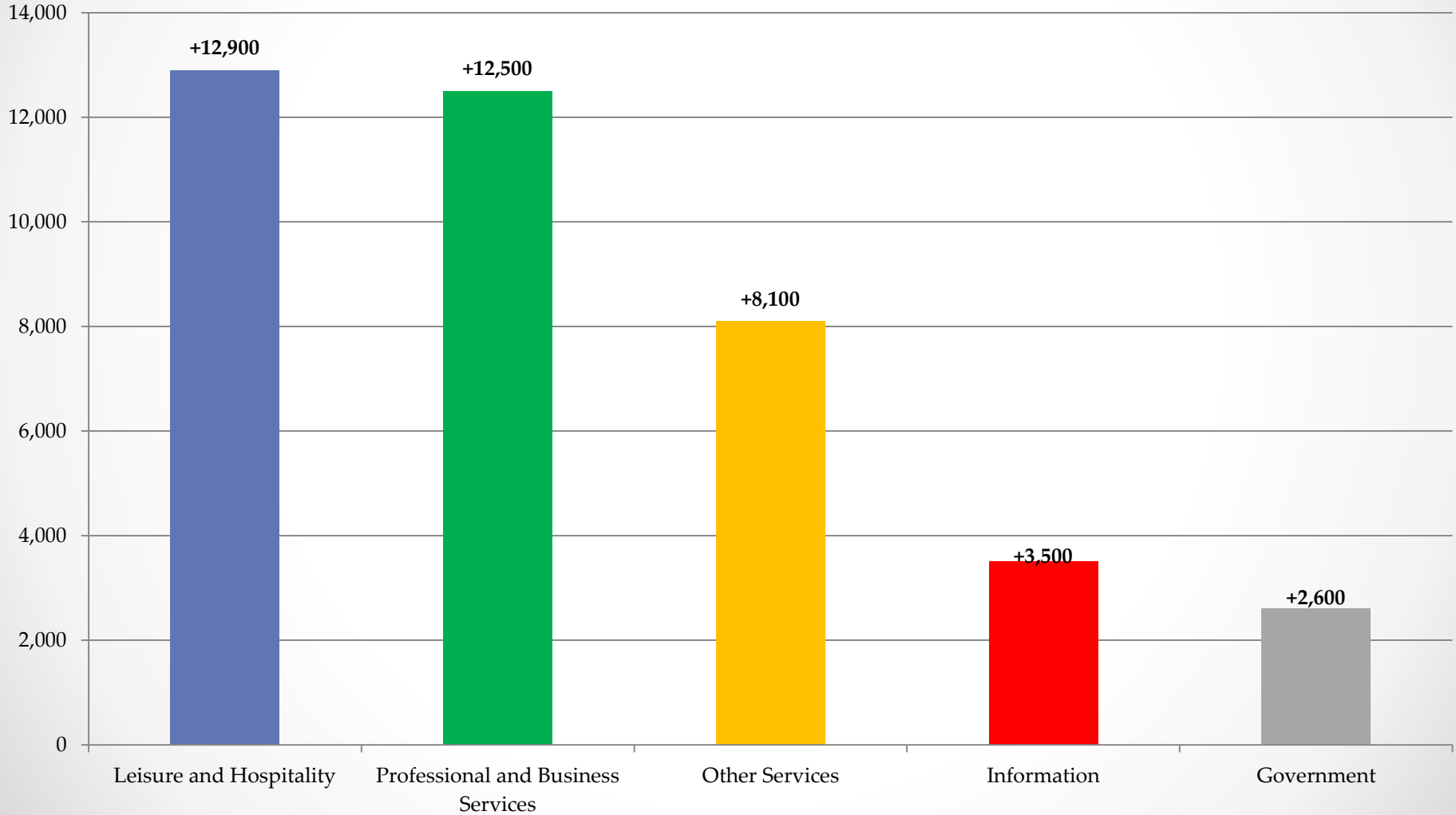




# Department of Employment Services

*Washington, DC's lead workforce development and labor agency*

Top 5 Industry with Highest Employment Increase (Jan.2015 – June 2019)

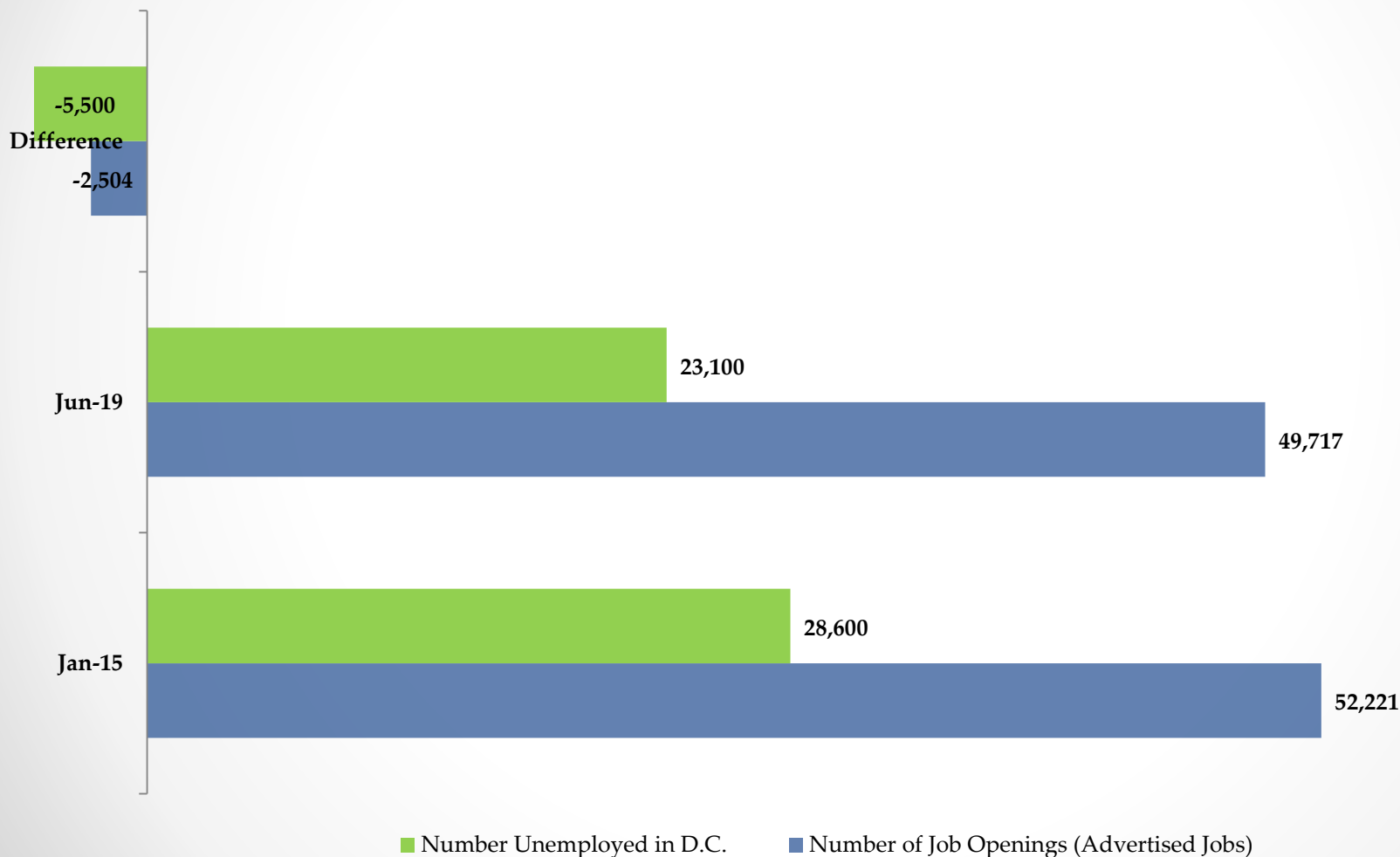




# Department of Employment Services

*Washington, DC's lead workforce development and labor agency*

## Job Openings vs. Number of Unemployed DC Residents (Jan. 2015 - June 2019)

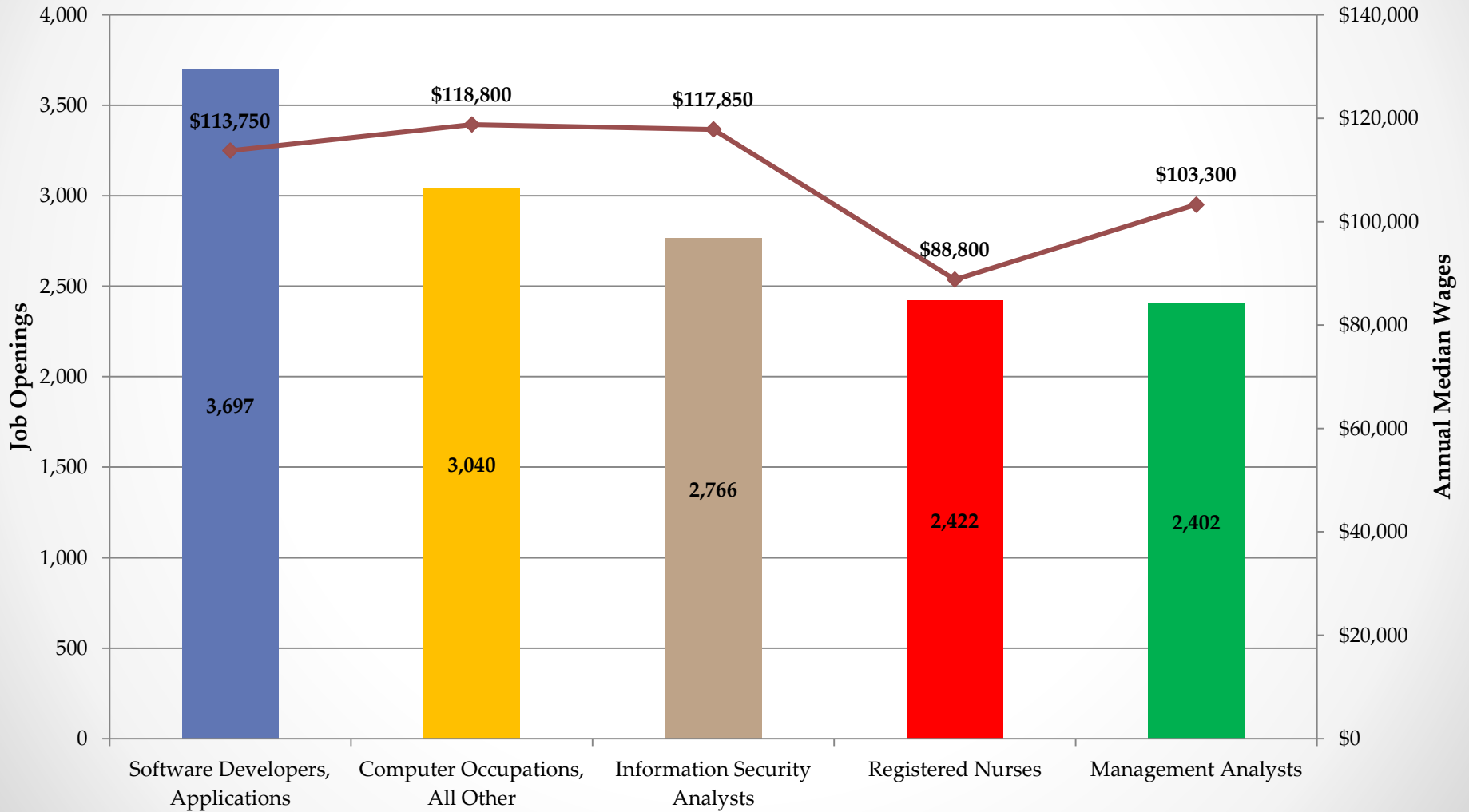




# Department of Employment Services

Washington, DC's lead workforce development and labor agency

Top 5 Job Openings: January 2017 - June 2019 (Average Monthly Unique Job Postings)

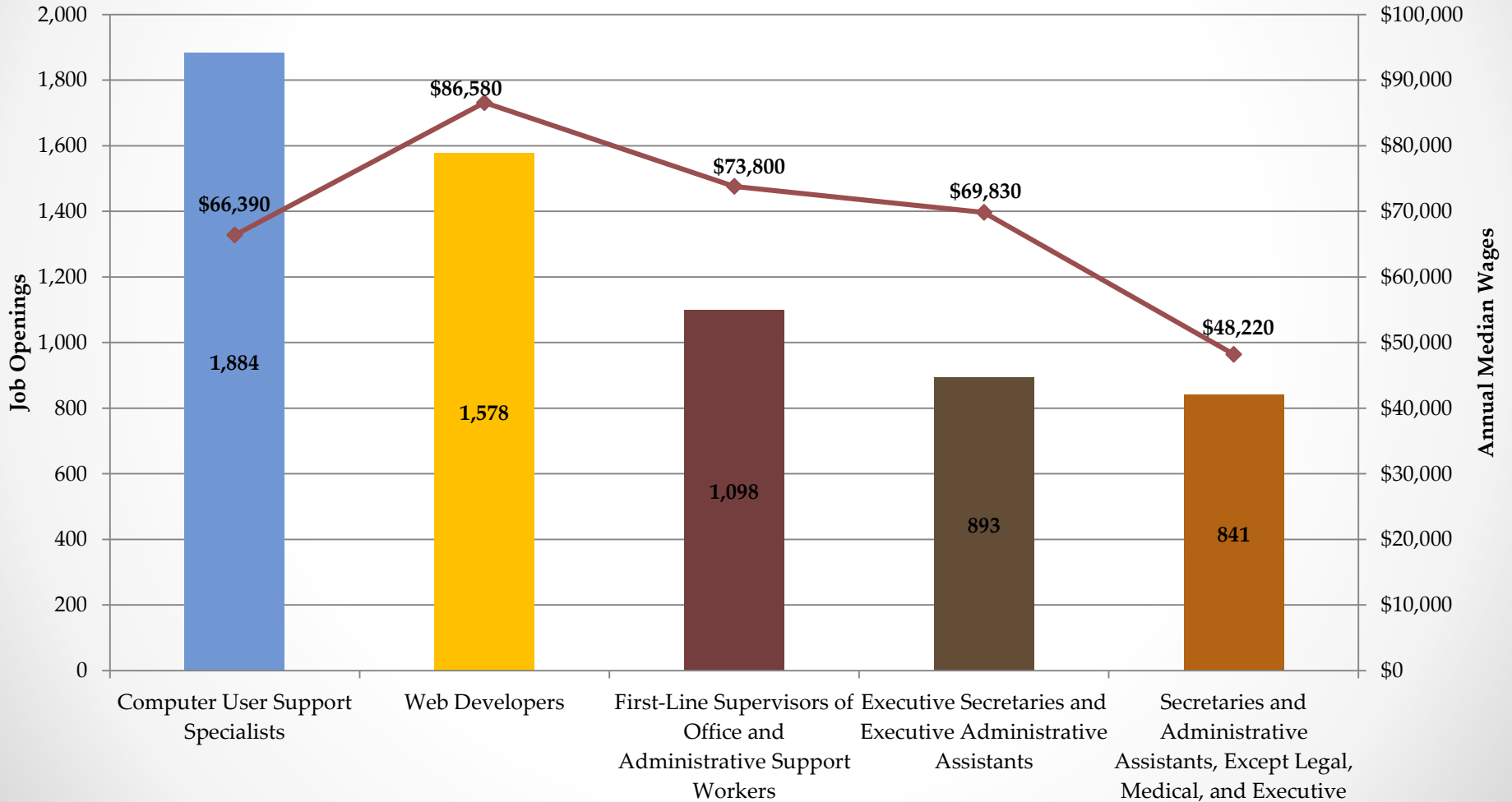




# Department of Employment Services

*Washington, DC's lead workforce development and labor agency*

**Top 5 Job Openings Requiring Less Than Bachelor's Degree: January 2017 - June 2019 (Avg Monthly Unique Job Postings)**





# Department of Employment Services

*Washington, DC's lead workforce development and labor agency*

---

## Contact Information

- Opeyemi Fasakin, Labor Economist
- Thomas Tsegaye, Junior Economist
- Data Request: <https://app.smartsheet.com/b/form/631658c092ef4395ab27b76716df8068>
- Email: [Imi.does@dc.gov](mailto:Imi.does@dc.gov)
- Phone: (202) 671-1633
- Website: [www.does.dc.gov](http://www.does.dc.gov)
- <http://does.dc.gov/page/labor-statistics>