



Department of Employment Services
Washington, DC's lead workforce development and labor agency

D.C. Labor Market Indicators: January 2015 - May 2020

Dr. Unique Morris-Hughes, Director

Ta-Tanisha Wallace, Chief Strategist for
Education and Workforce Innovation

Saikou A. Diallo, Chief Economist

**Prepared by the Office of Labor Market Research and
Performance**



Department of Employment Services

Washington, DC's lead workforce development and labor agency

Highlights

- From January 2015 to May 2020:
 - ❖ The unemployment rate in DC increased by **1.5** percentage points (or **20.3%** increase);
 - ❖ Unemployment rate in Ward 7 and Ward 8 increased by **0.2** percentage points (**1.6%** increase) and **0.7** percentage points (**4.3%** increase) respectively;
 - ❖ Total number of DC residents that are employed decreased by **4,000**;
 - ❖ Total number of jobs in DC decreased by **21,900**;
 - ❖ Initial monthly unemployment insurance benefits claimants increased by **1,058%**;
 - ❖ Total number of unemployed DC residents increased by **5,700** people;
 - ❖ In DC there are **1.0** jobs available (advertised) for **1** unemployed DC resident;
 - ❖ The average weekly median duration of unemployment for Black and African American decreased by **18.9** weeks;
 - ❖ The private sector total number of payroll jobs in the District decreased by **24,500** jobs or **-4.78%** decrease from January 2015;
 - ❖ Professional and Business Services has the highest employment increase by industry with **6,400 since January 2015**;
 - ❖ The highest in-demand occupation is Software Developers, Applications with an average monthly opening of **4,573**;
 - ❖ The highest in-demand occupation requiring less than a bachelor's degree is Computer User Support Specialists with an average monthly opening of **2,114**.



Department of Employment Services

Washington, DC's lead workforce development and labor agency

DC Annual Average Unemployment Rate (2015-2019)

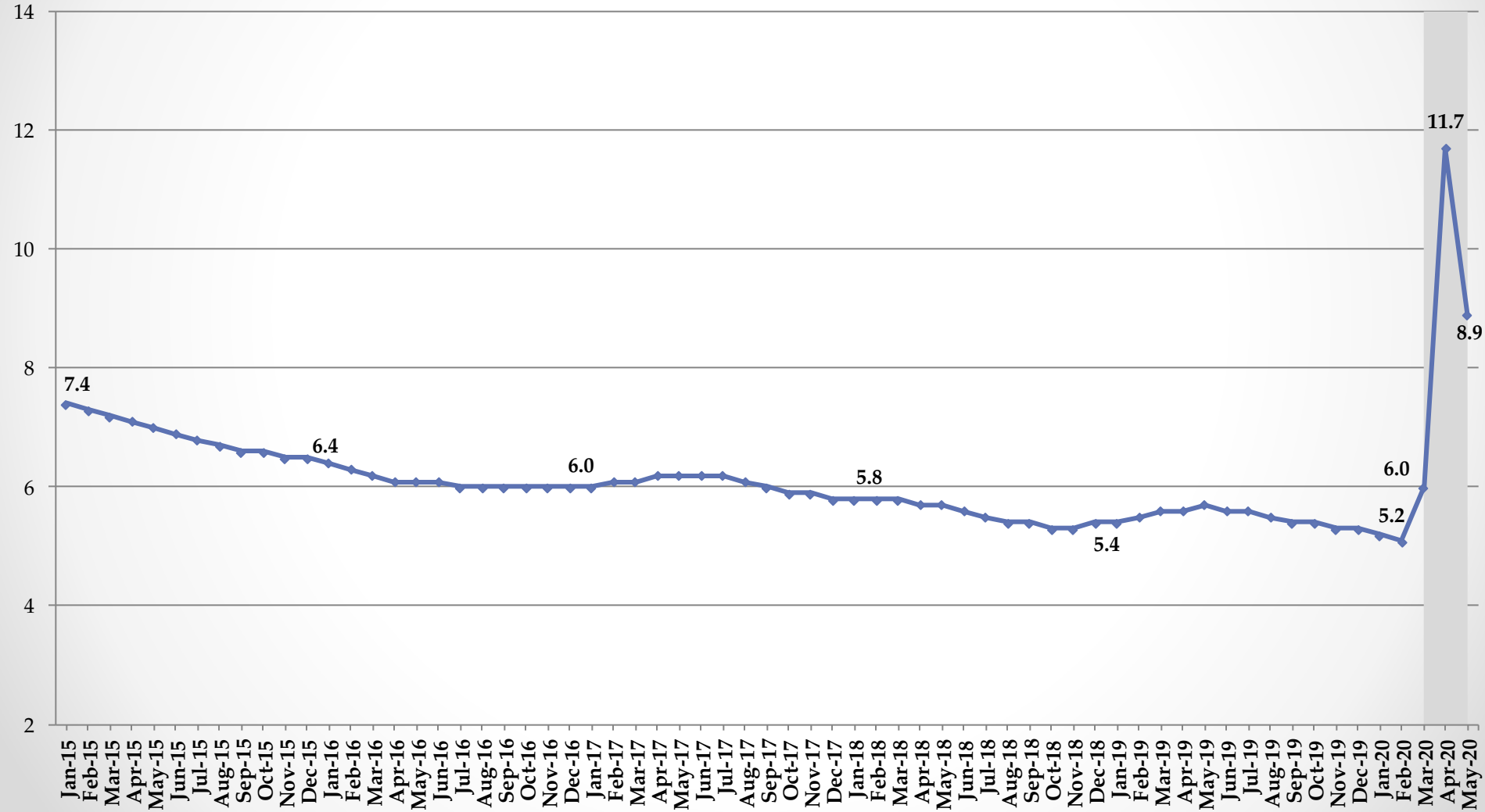




Department of Employment Services

Washington, DC's lead workforce development and labor agency

The District's Monthly Unemployment Rate: Jan. 2015 - May. 2020

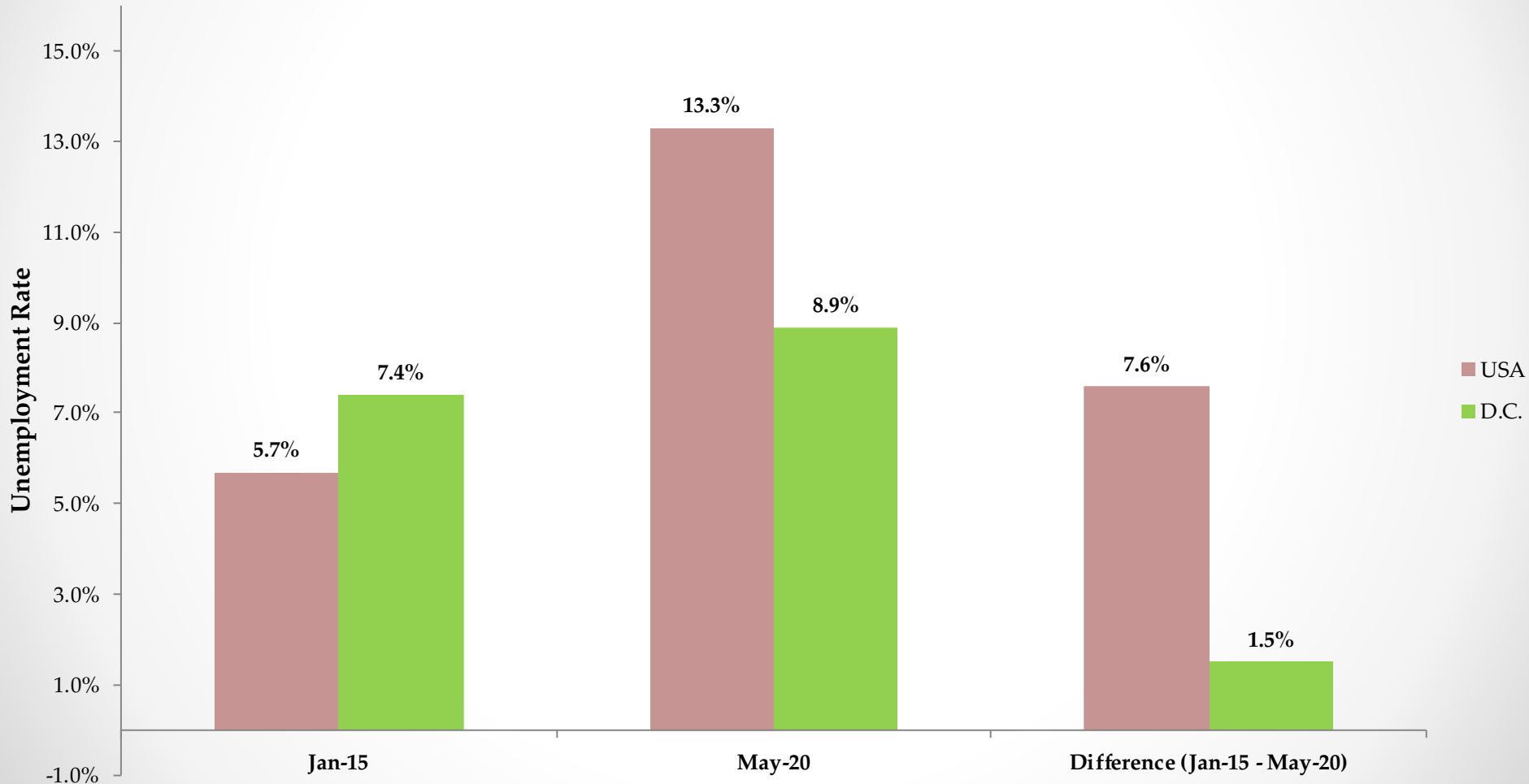




Department of Employment Services

Washington, DC's lead workforce development and labor agency

Unemployment Rate (January 2015 - May 2020)

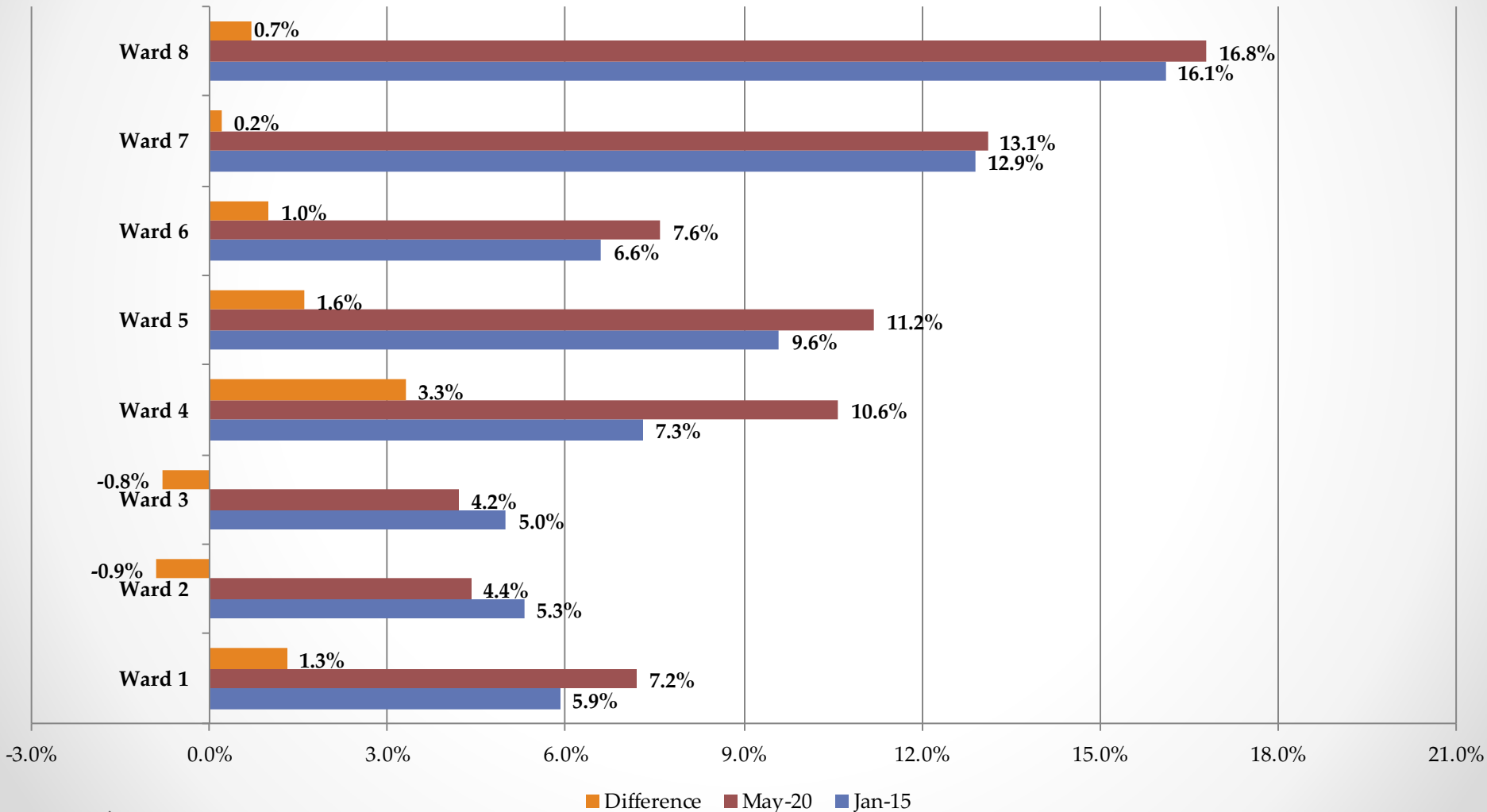




Department of Employment Services

Washington, DC's lead workforce development and labor agency

Unemployment Rate by Ward (January 2015 - May 2020)

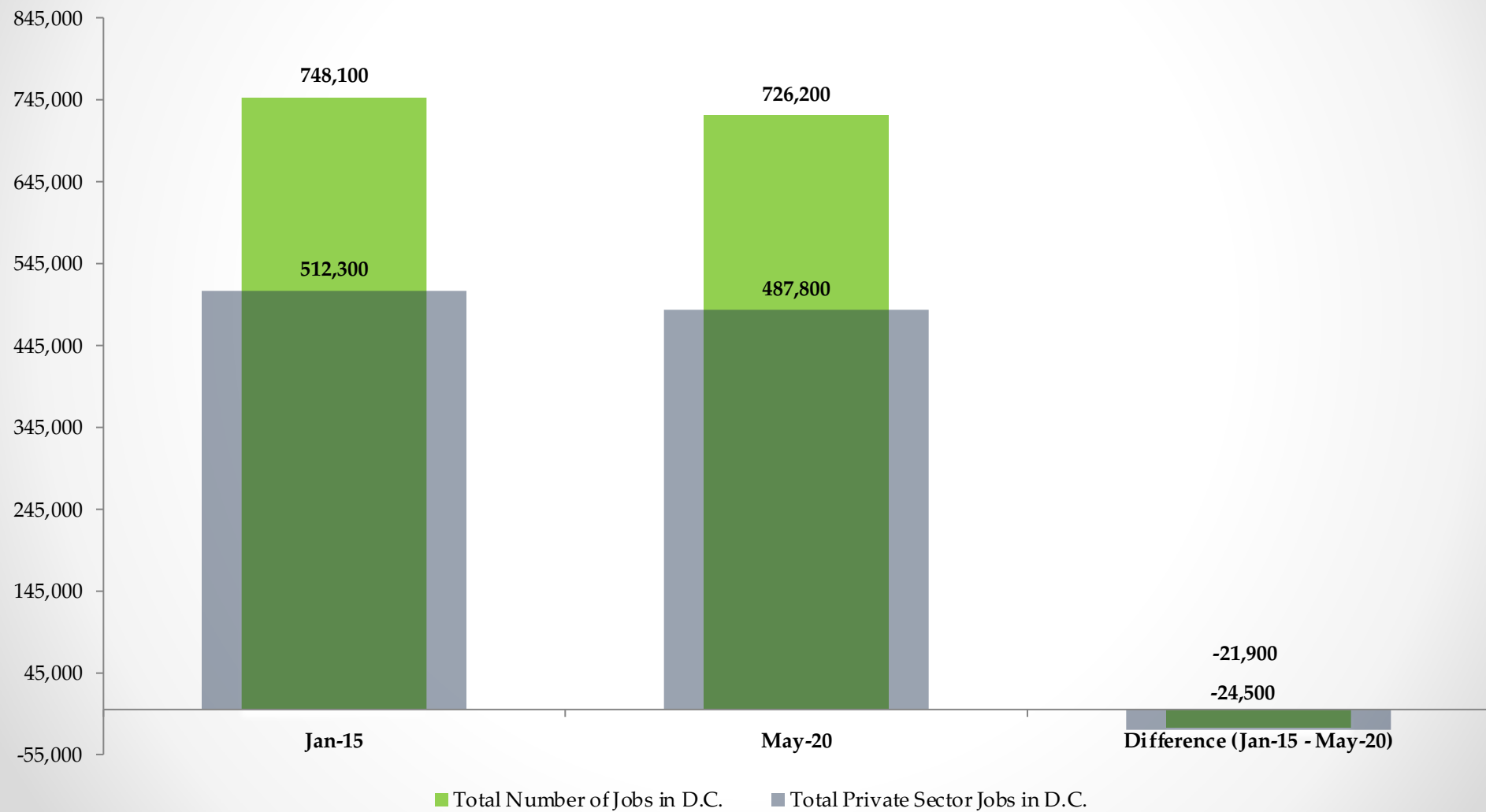




Department of Employment Services

Washington, DC's lead workforce development and labor agency

Total Number of Jobs and Total Private Sector Jobs in DC (Jan. 2015 - May 2020)

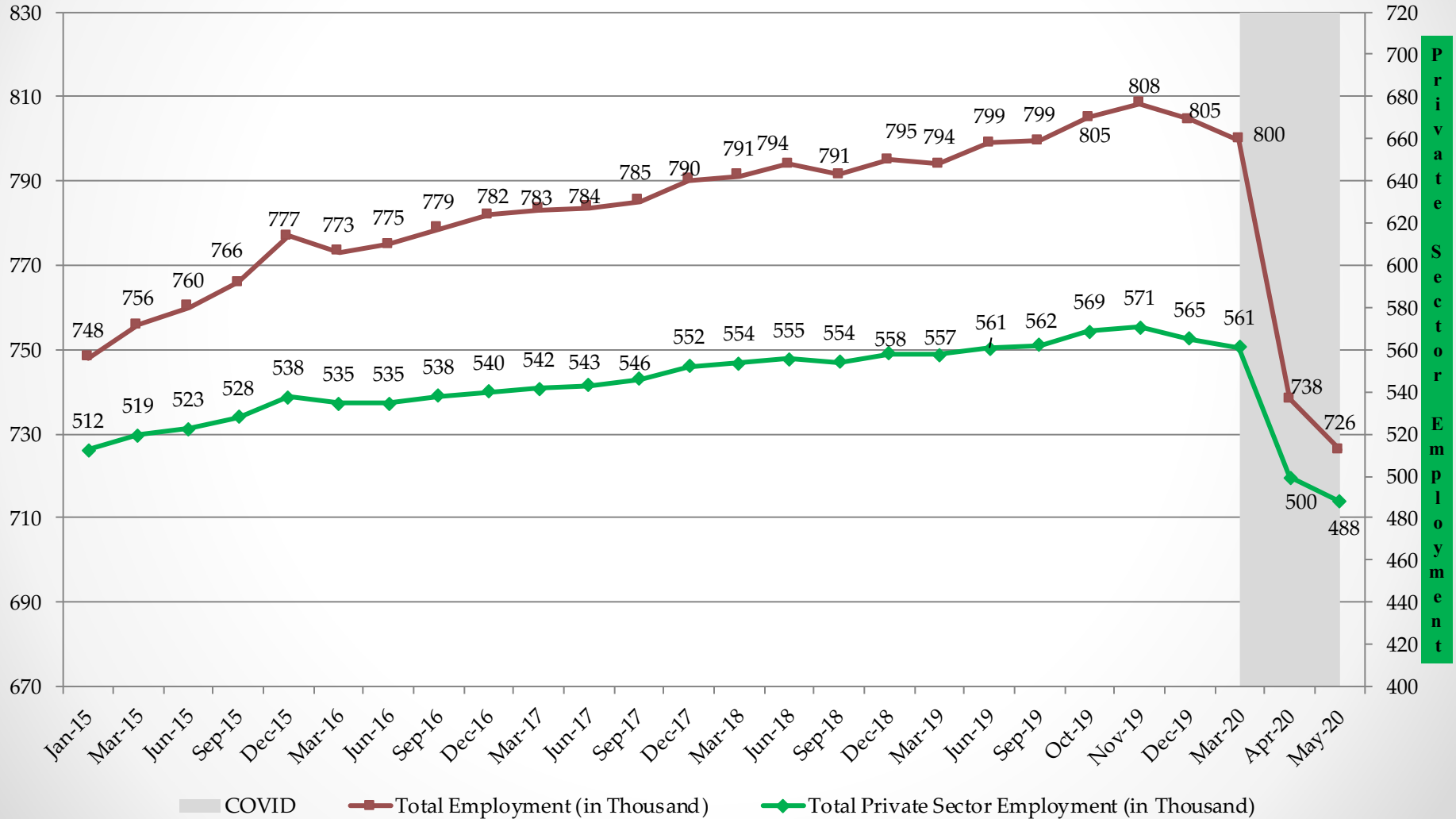




Department of Employment Services

Washington, DC's lead workforce development and labor agency

Total Employment and Private Sector Employment in D.C. (Jan.2015 - May 2020 (In Thousands))

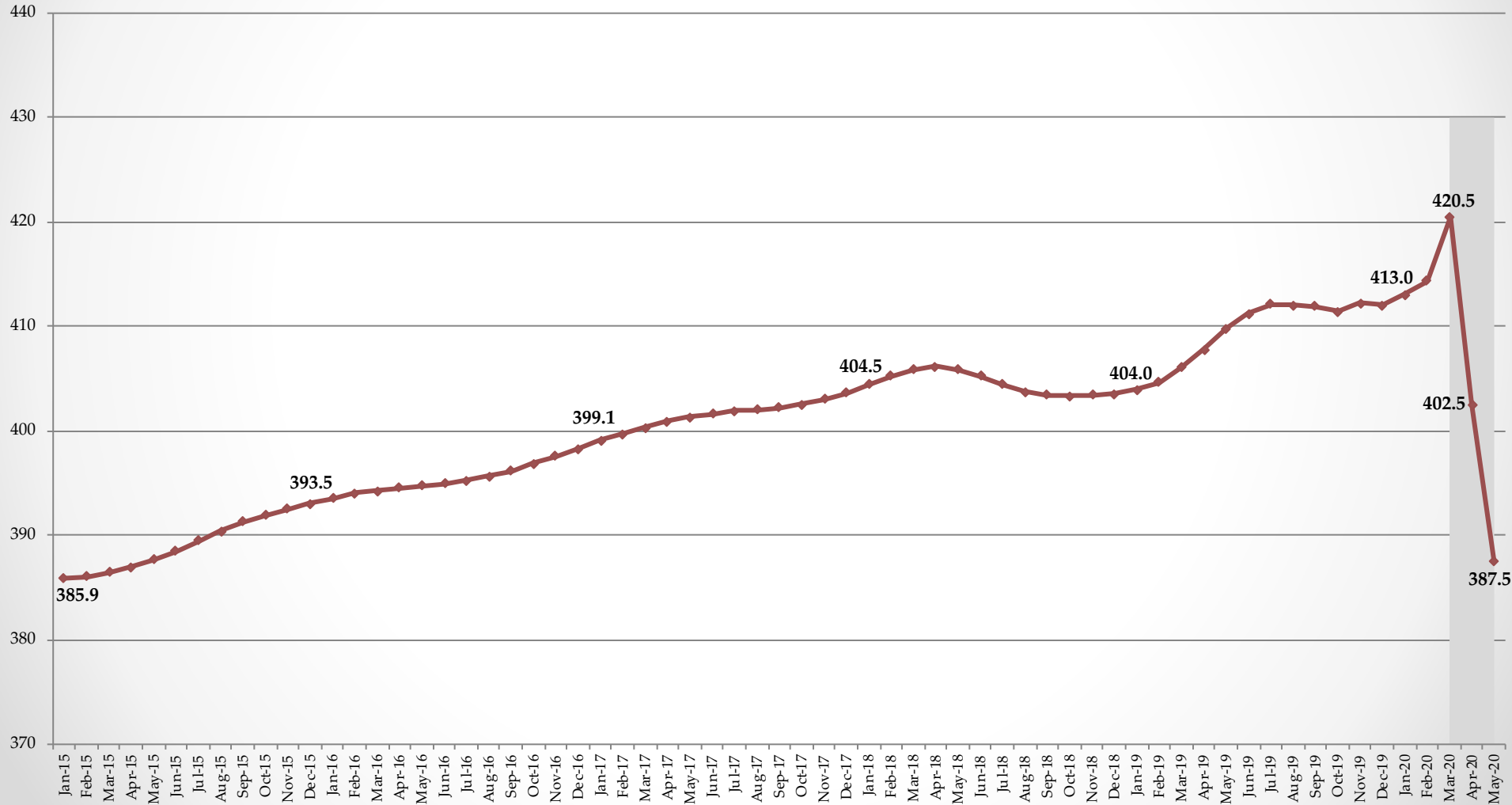




Department of Employment Services

Washington, DC's lead workforce development and labor agency

The District's Labor Force (Jan. 2015 - May 2020) (In Thousands)

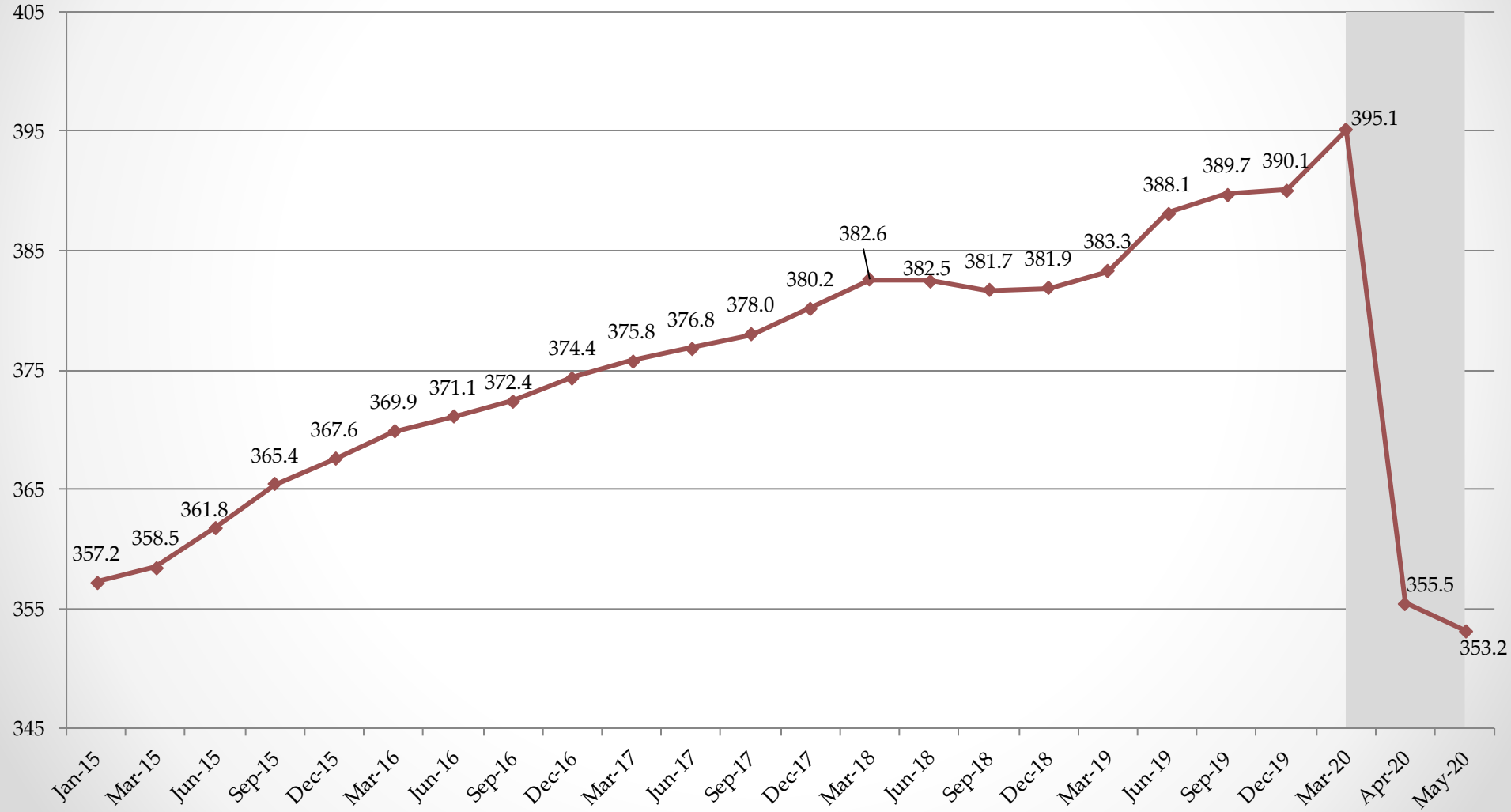




Department of Employment Services

Washington, DC's lead workforce development and labor agency

Employed D.C. Residents (Jan. 2015 - May 2020) (In Thousands)

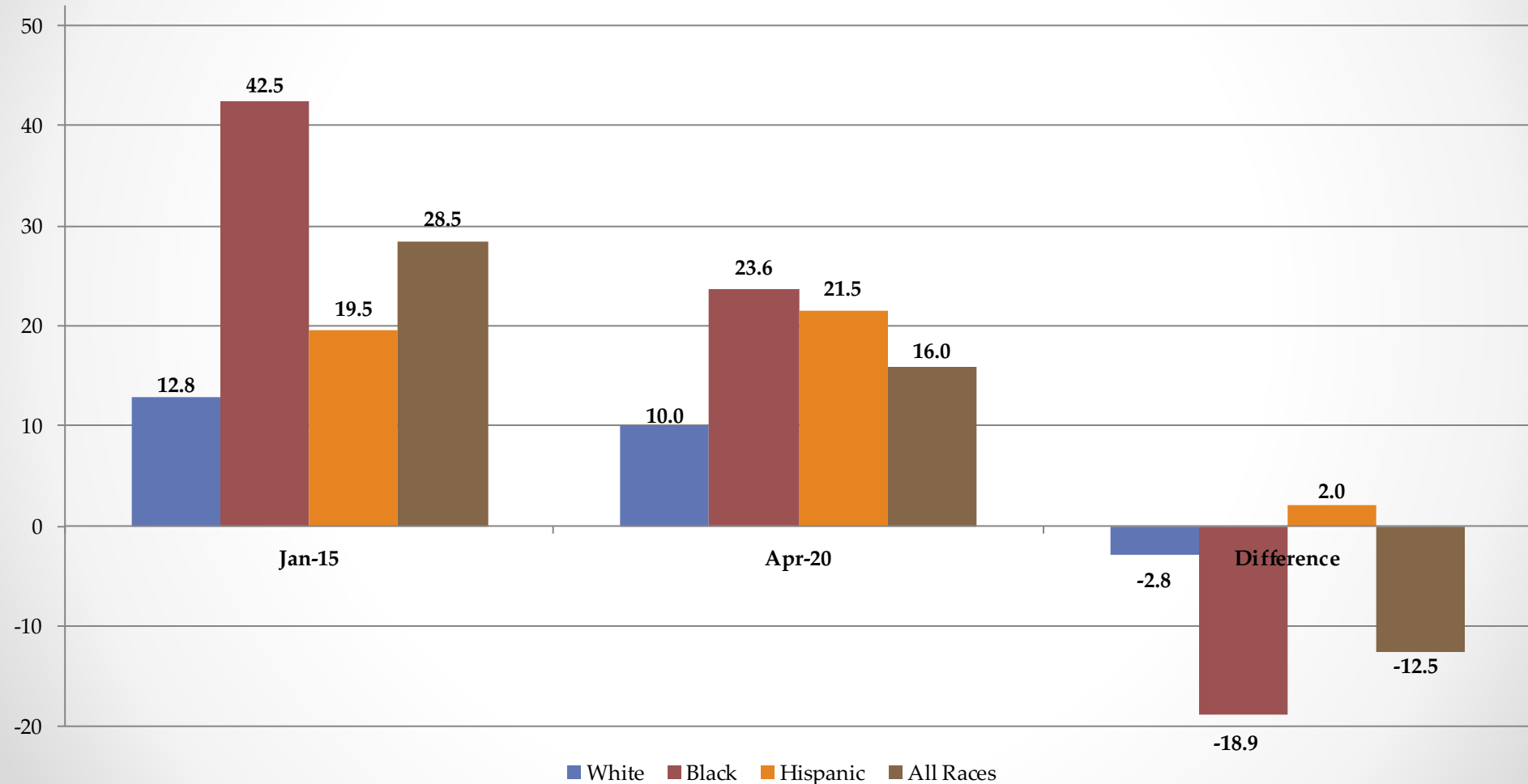




Department of Employment Services

Washington, DC's lead workforce development and labor agency

Median Duration of Unemployment (in weeks) (Jan. 2015 - May 2020)

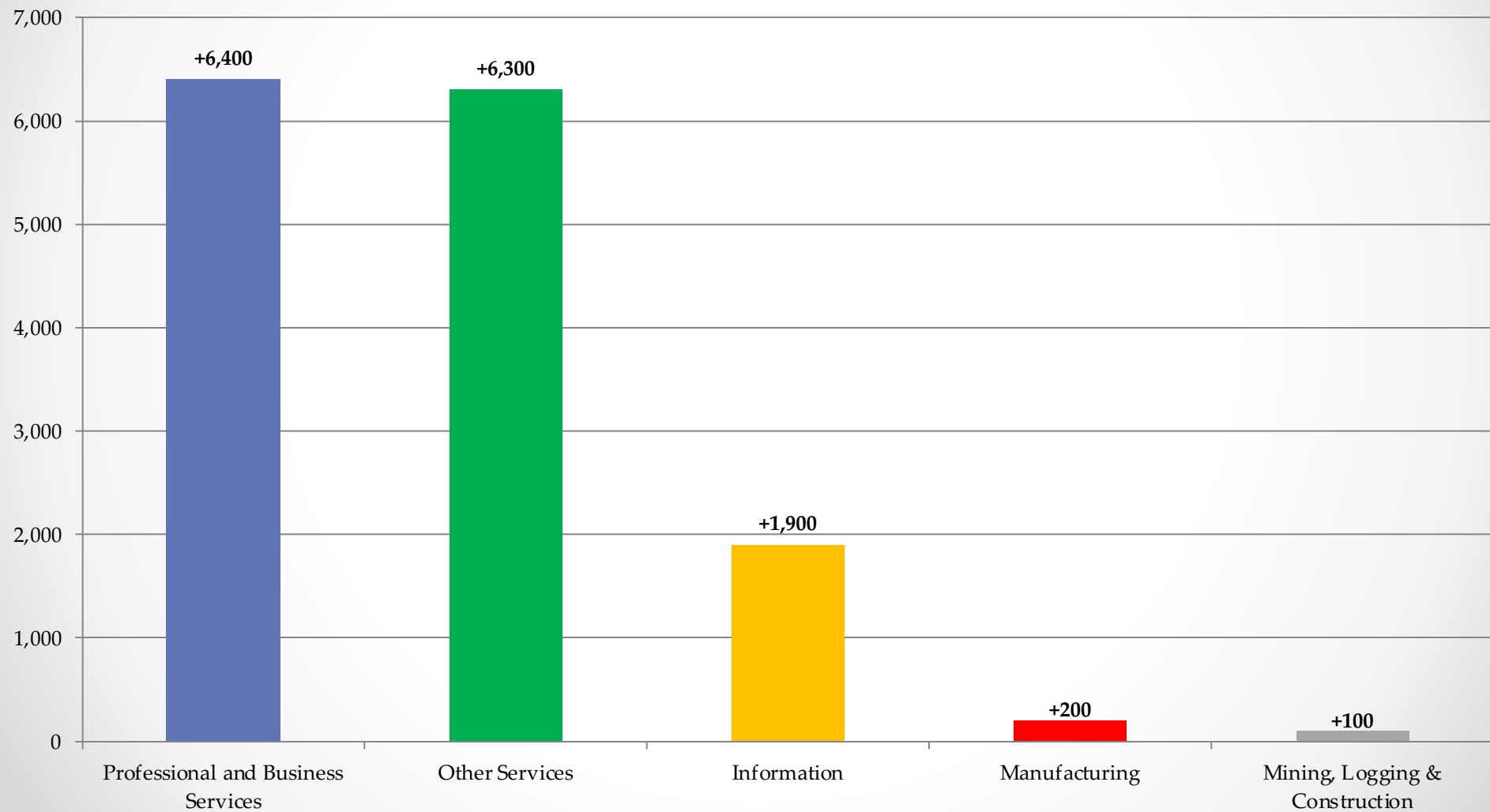




Department of Employment Services

Washington, DC's lead workforce development and labor agency

Top 5 Industry with Highest Employment Increase (Jan.2015 – May 2020)

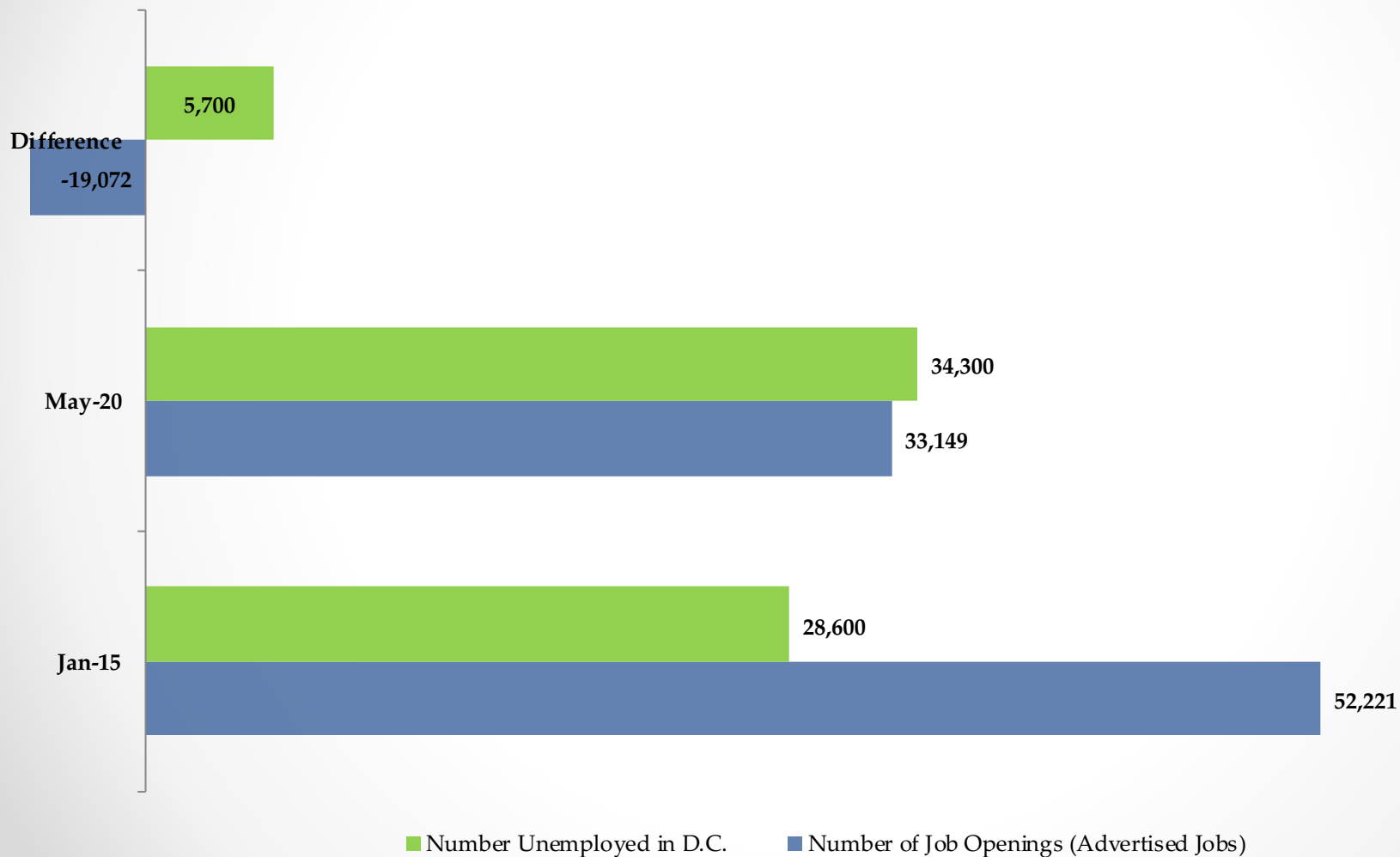




Department of Employment Services

Washington, DC's lead workforce development and labor agency

Job Openings vs. Number of Unemployed DC Residents (Jan. 2015 - May 2020)

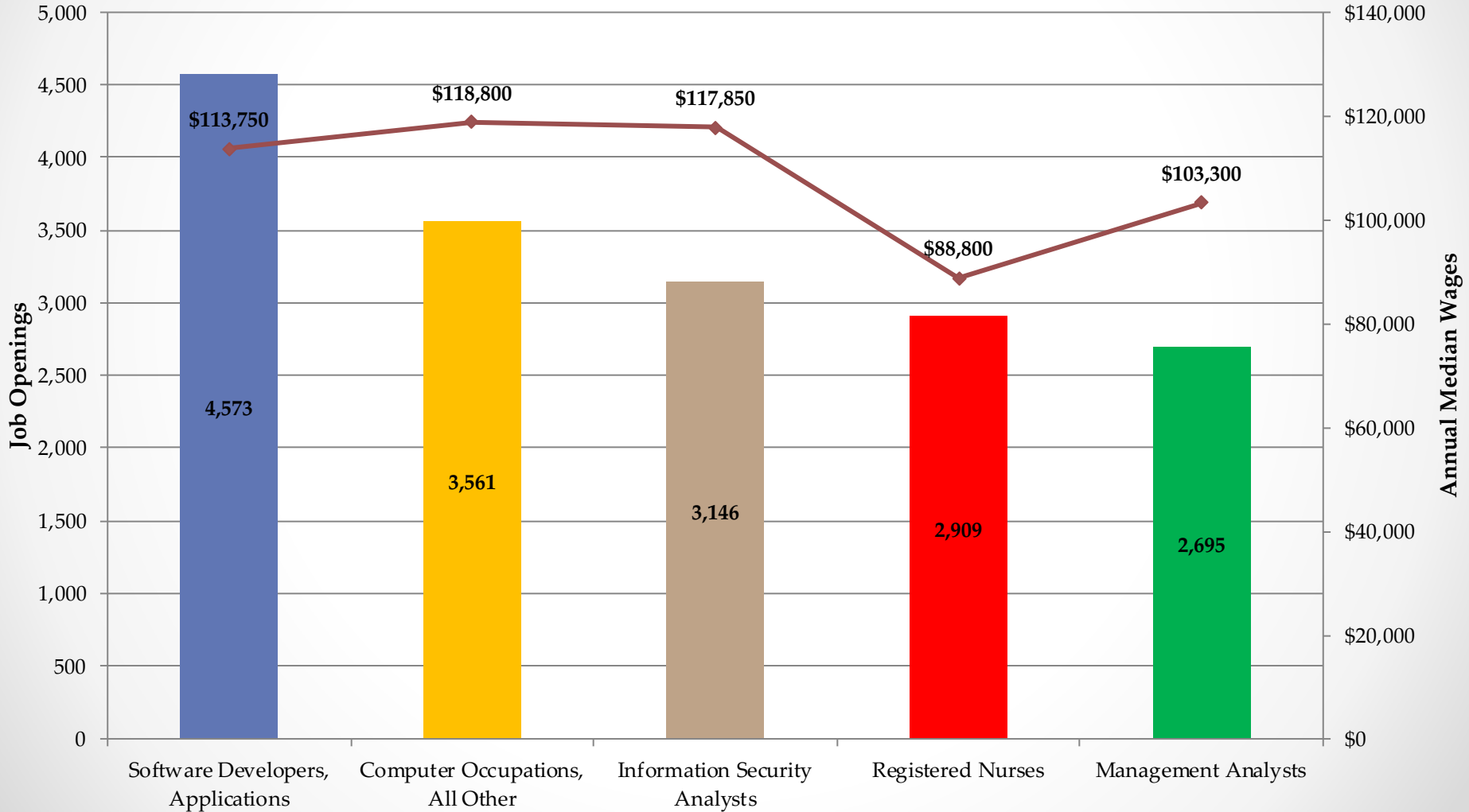




Department of Employment Services

Washington, DC's lead workforce development and labor agency

Top 5 Job Openings: January 2017 - May 2020 (Average Monthly Unique Job Postings)

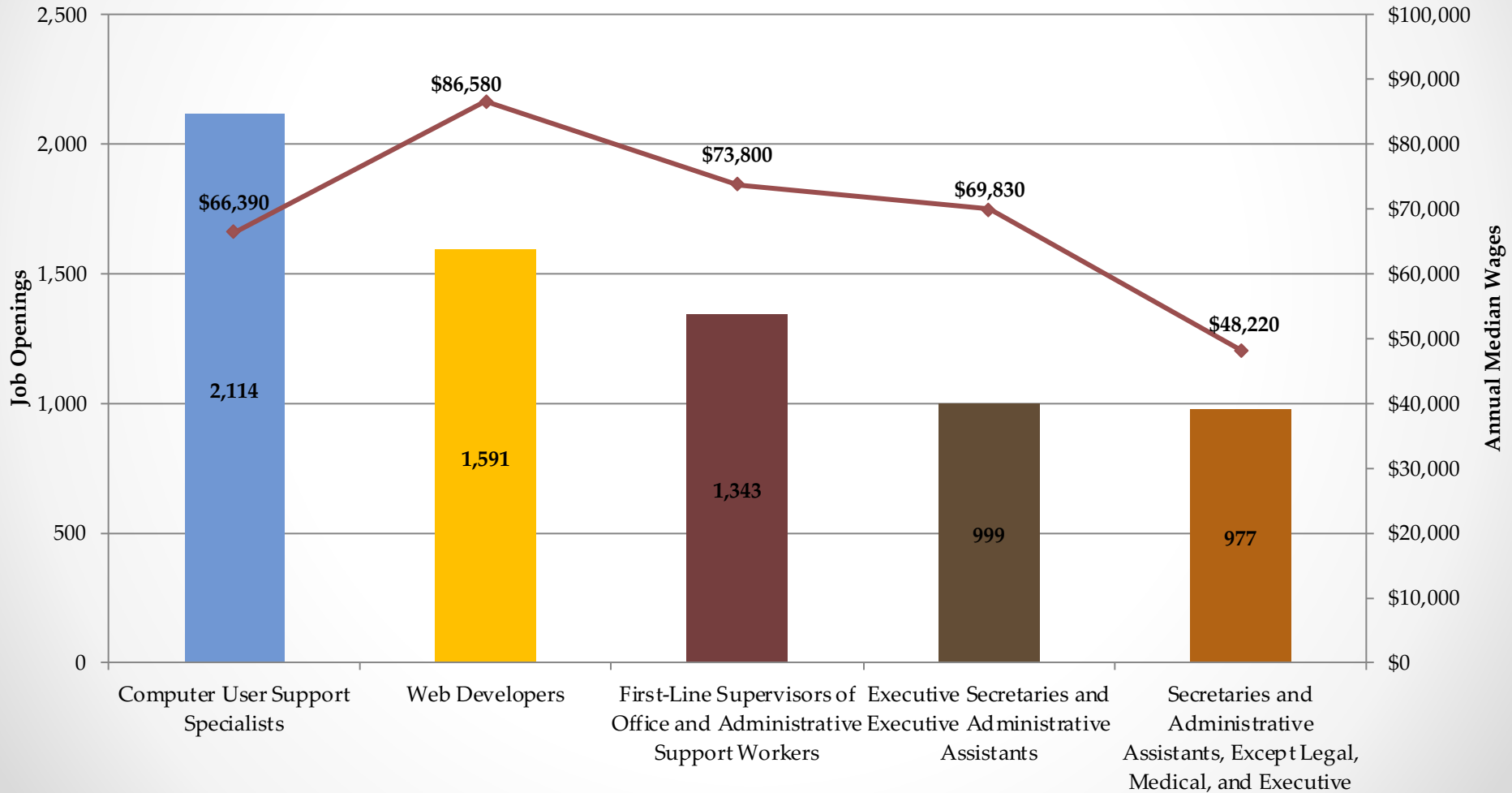




Department of Employment Services

Washington, DC's lead workforce development and labor agency

Top 5 Job Openings Requiring Less Than Bachelor's Degree: January 2017 - May 2020 (Avg Monthly Unique Job Postings)





Department of Employment Services

Washington, DC's lead workforce development and labor agency

Contact Information

- Opeyemi Fasakin, Labor Economist
- Thomas Tsegaye, Labor Economist
- **Data Request:** <https://app.smartsheet.com/b/form/631658c092ef4395ab27b76716df8068>
- **Email:** Imi.does@dc.gov
- **Phone:** (202) 671-1633
- **Website:** www.does.dc.gov
- <http://does.dc.gov/page/labor-statistics>