



Department of Employment Services
Washington, DC's lead workforce development and labor agency

D.C. Labor Market Indicators: January 2015 - October 2020

Dr. Unique Morris-Hughes, Director

Ta-Tanisha Wallace, Chief Strategist for
Education and Workforce Innovation

Jonathan Toye, Program Analysis Officer

**Prepared by the Office of Labor Market Research and
Performance**

Highlights

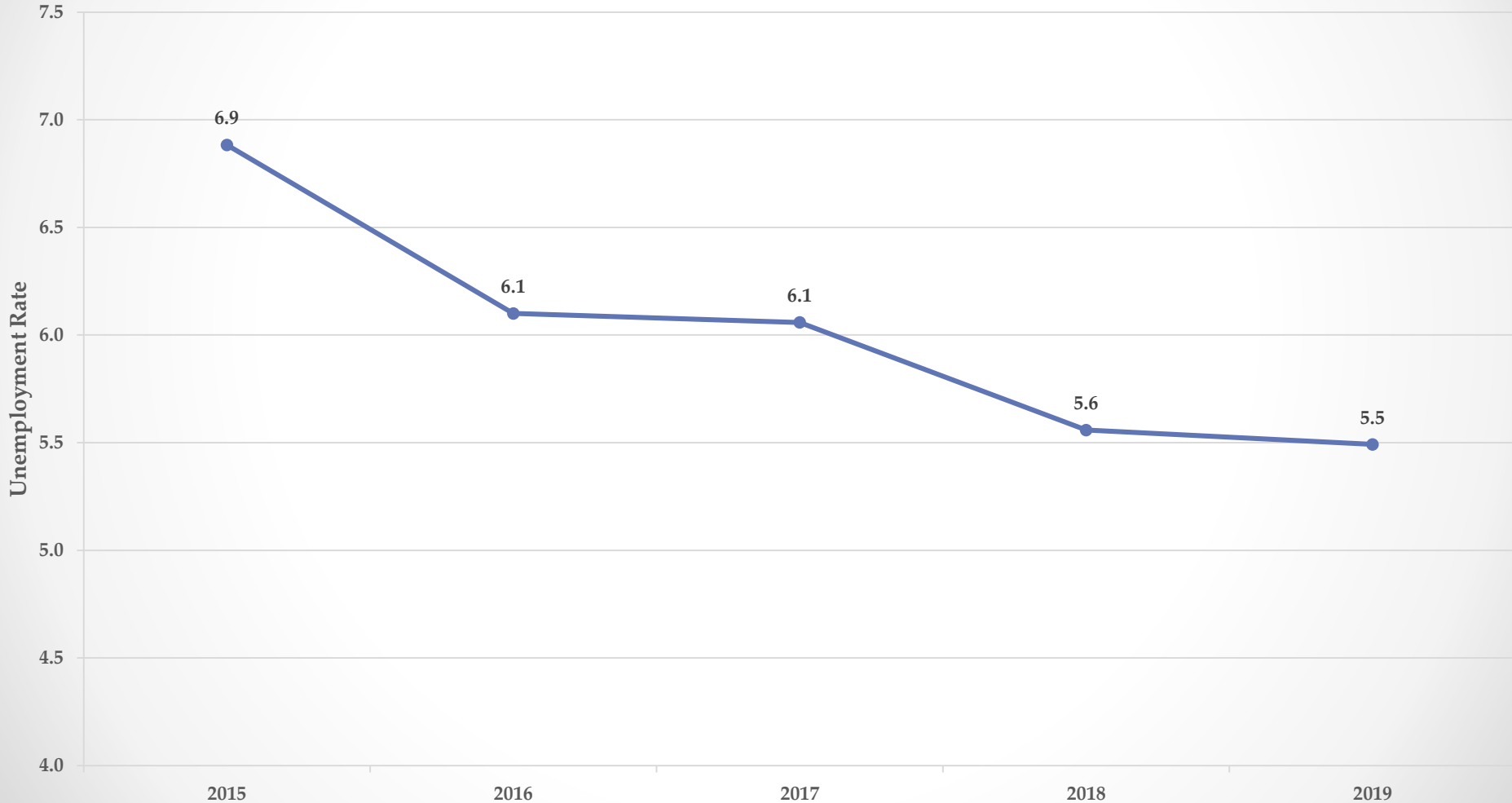
- From January 2015 to October 2020:
 - ❖ The unemployment rate in DC increased by **0.8** percentage points (or **10.8%** increase);
 - ❖ Unemployment rate in Ward 7 and Ward 8 increased by **1.3** percentage points (**10.1%** increase) and **2.4** percentage points (**18.5%** increase) respectively;
 - ❖ Total number of DC residents that are employed increased by **8,100**;
 - ❖ Total number of jobs in DC increased by **5,600**;
 - ❖ Initial monthly unemployment insurance benefits claimants increased by **275%**;
 - ❖ Total number of unemployed DC residents increased by **4,200** people;
 - ❖ In DC there are **1.1** jobs available (advertised) for **1** unemployed DC resident;
 - ❖ The average weekly median duration of unemployment for Black and African American decreased by **22.0** weeks;
 - ❖ The private sector total number of payroll jobs in the District decreased by **2,800** jobs or **-0.55%** decrease from January 2015;
 - ❖ Government had the highest employment increase by industry with **8,400** since **January 2015**;
 - ❖ The highest in-demand occupation is Software Developers and Software Quality Assurance Analysts and Testers with an average monthly opening of **4,829**;
 - ❖ The highest in-demand occupation requiring less than a bachelor's degree is Computer User Support Specialists with an average monthly opening of **2,056**.



Department of Employment Services

Washington, DC's lead workforce development and labor agency

DC Annual Average Unemployment Rate (2015-2019)

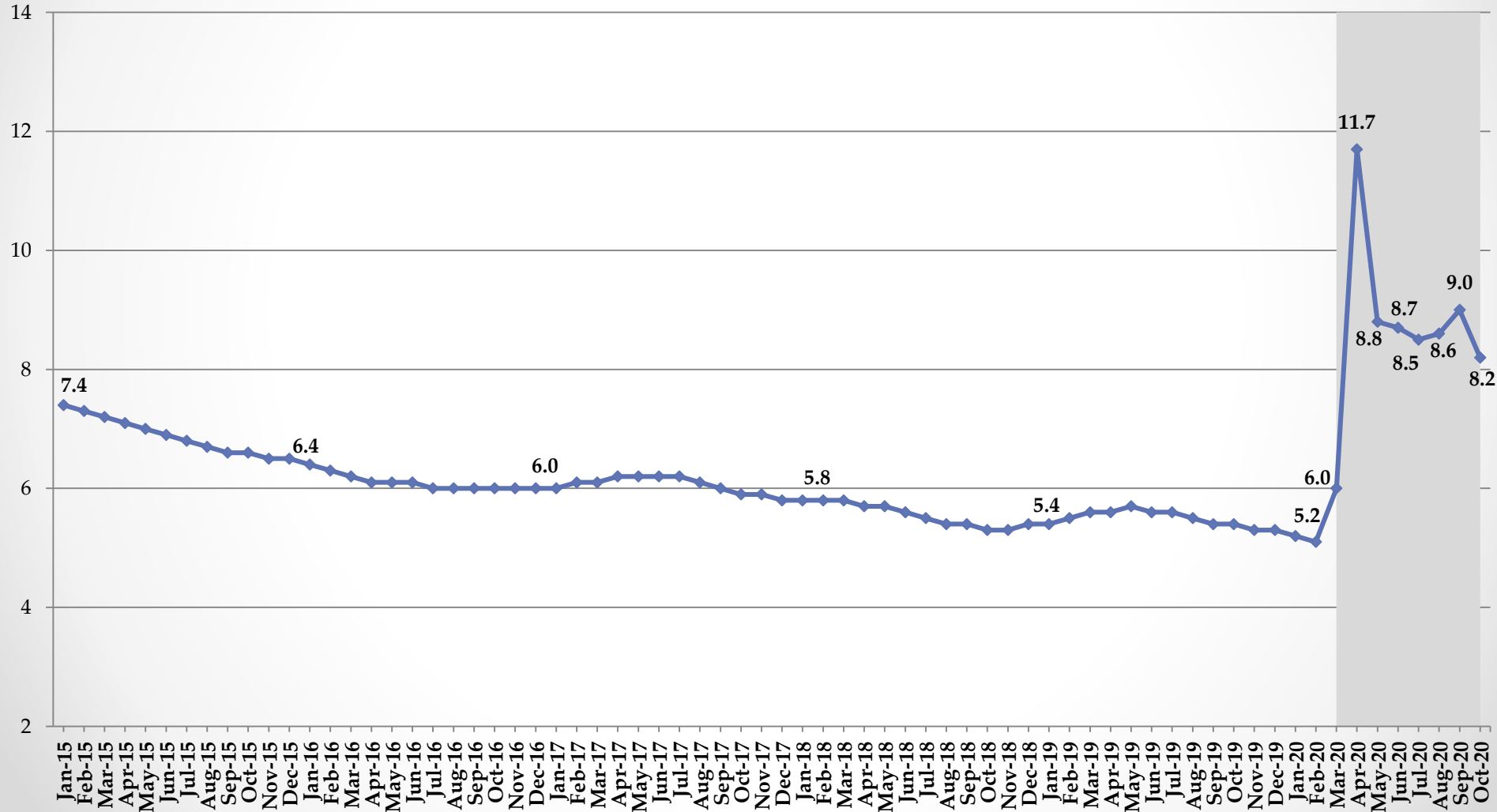




Department of Employment Services

Washington, DC's lead workforce development and labor agency

The District's Monthly Unemployment Rate: Jan. 2015 - Oct. 2020

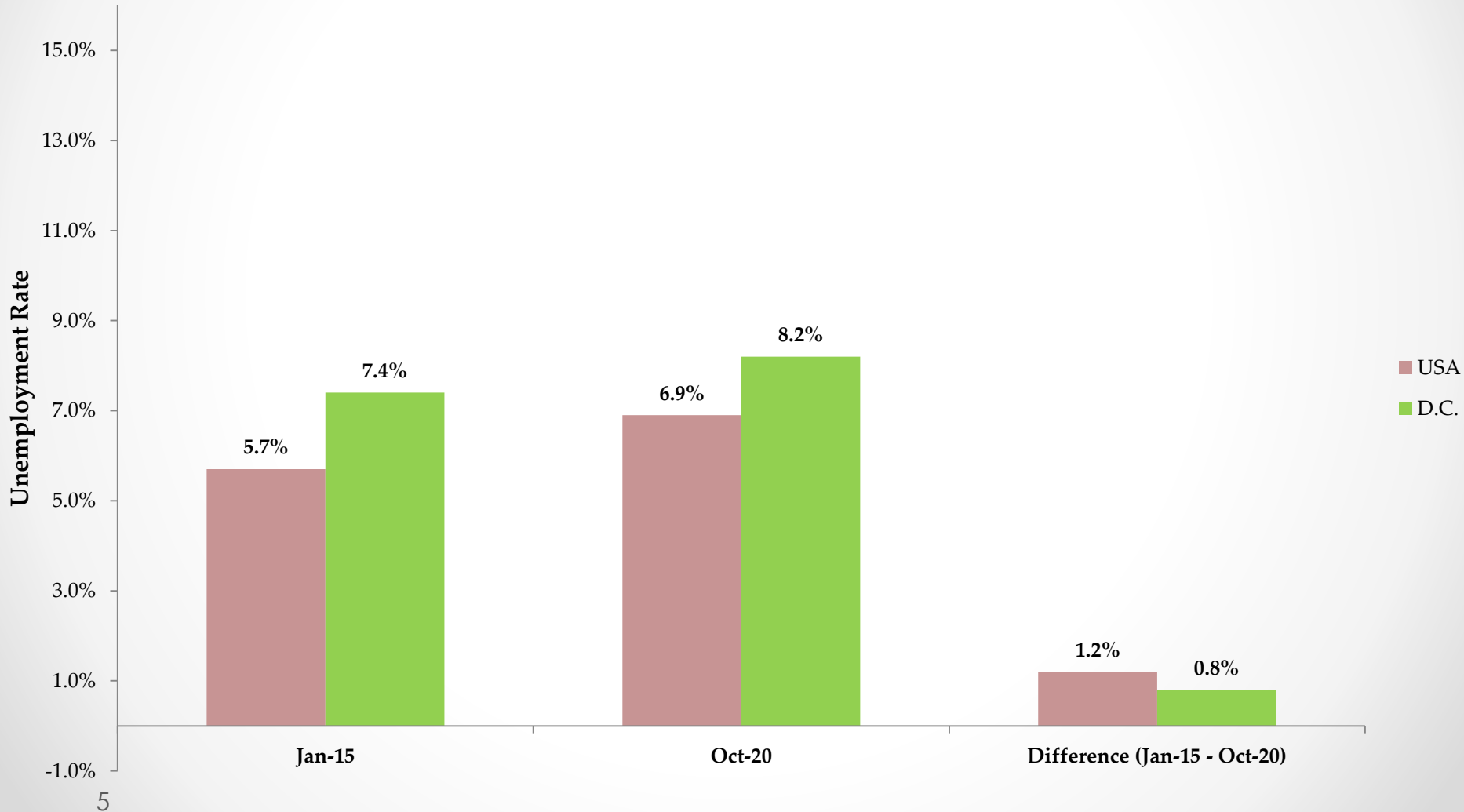




Department of Employment Services

Washington, DC's lead workforce development and labor agency

Unemployment Rate (January 2015 - October 2020)

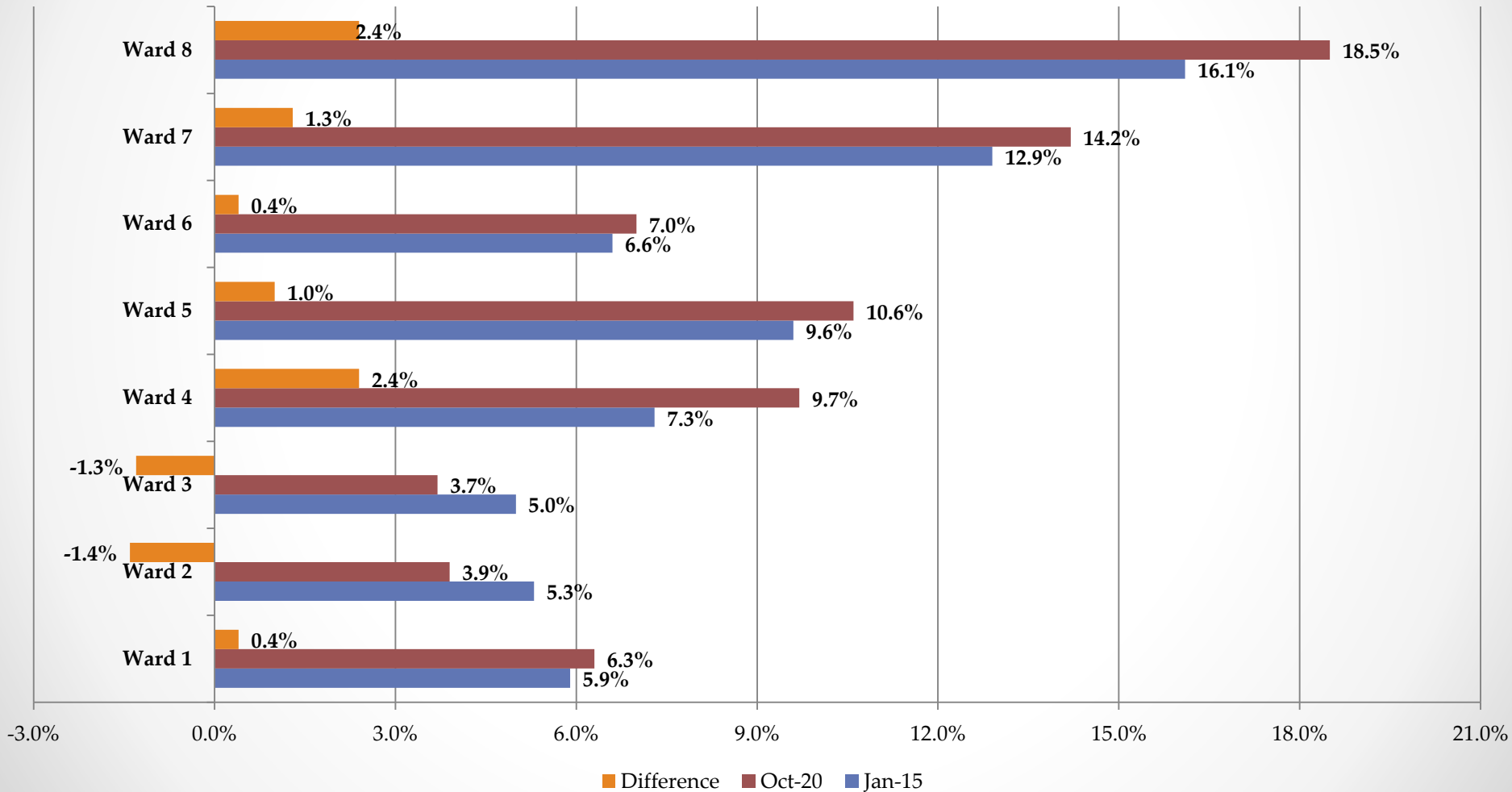




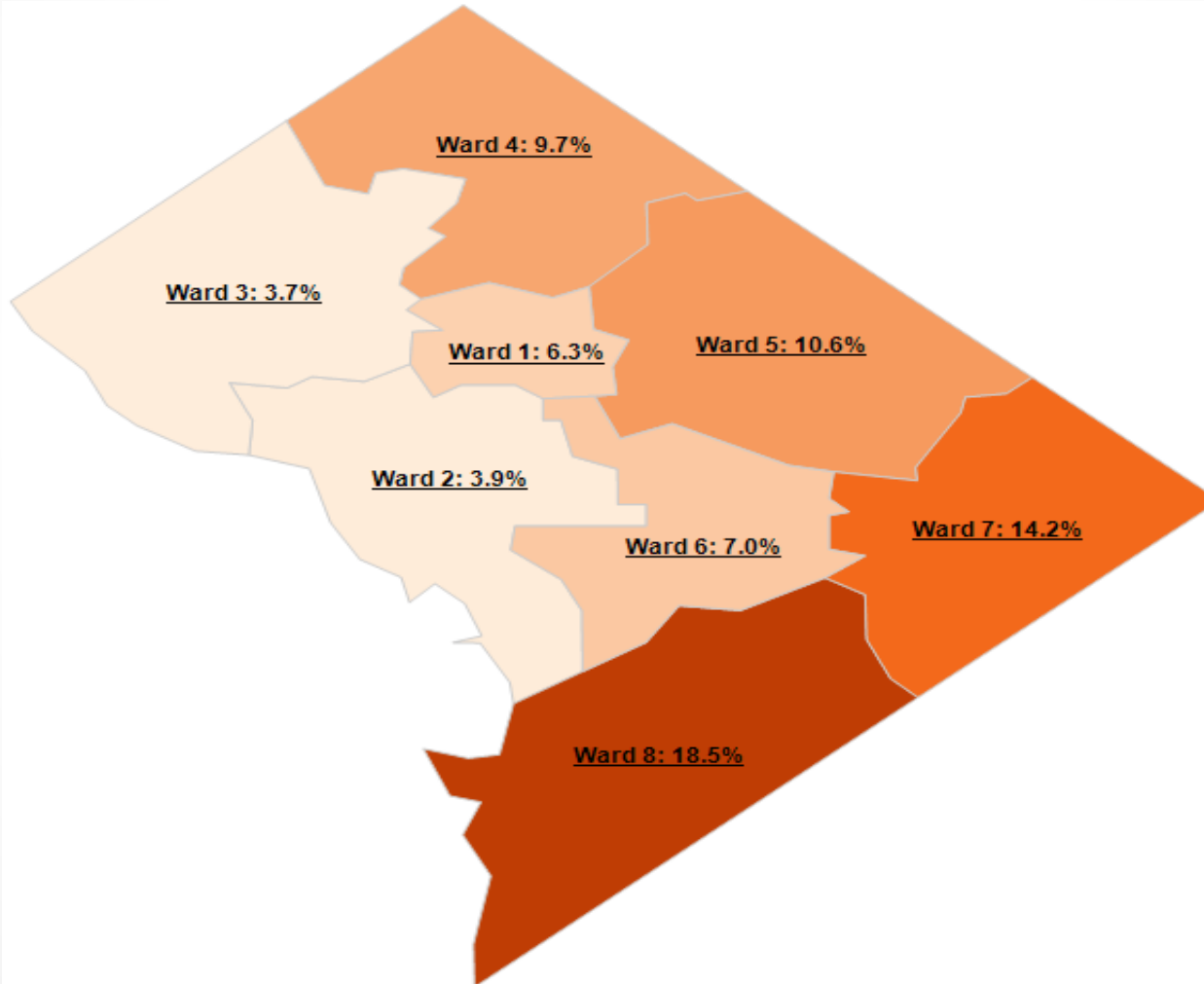
Department of Employment Services

Washington, DC's lead workforce development and labor agency

Unemployment Rate by Ward (January 2015 - October 2020)



Unemployment Rate by Ward: October 2020

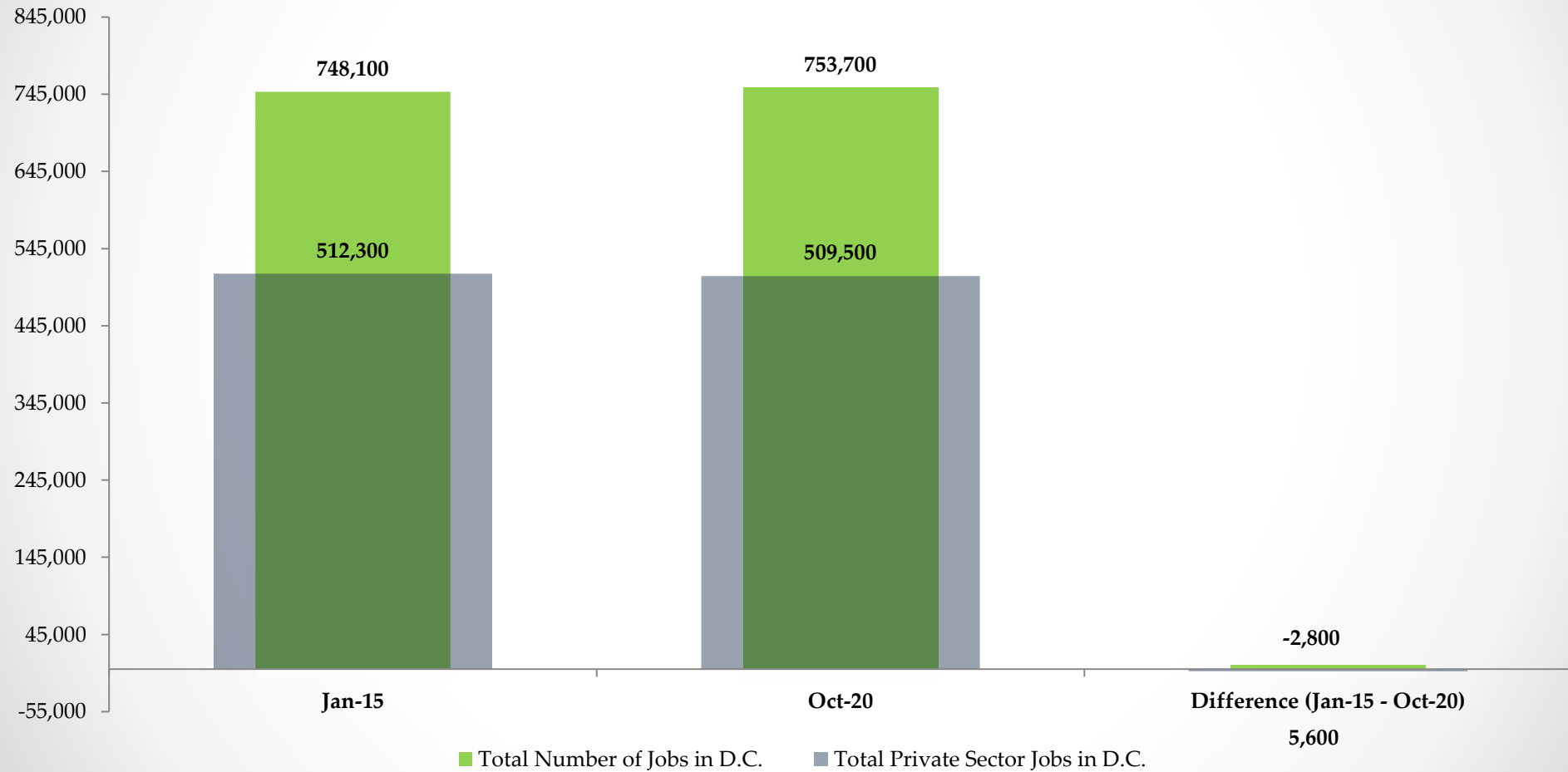




Department of Employment Services

Washington, DC's lead workforce development and labor agency

Total Number of Jobs and Total Private Sector Jobs in DC (Jan. 2015 - Oct. 2020)

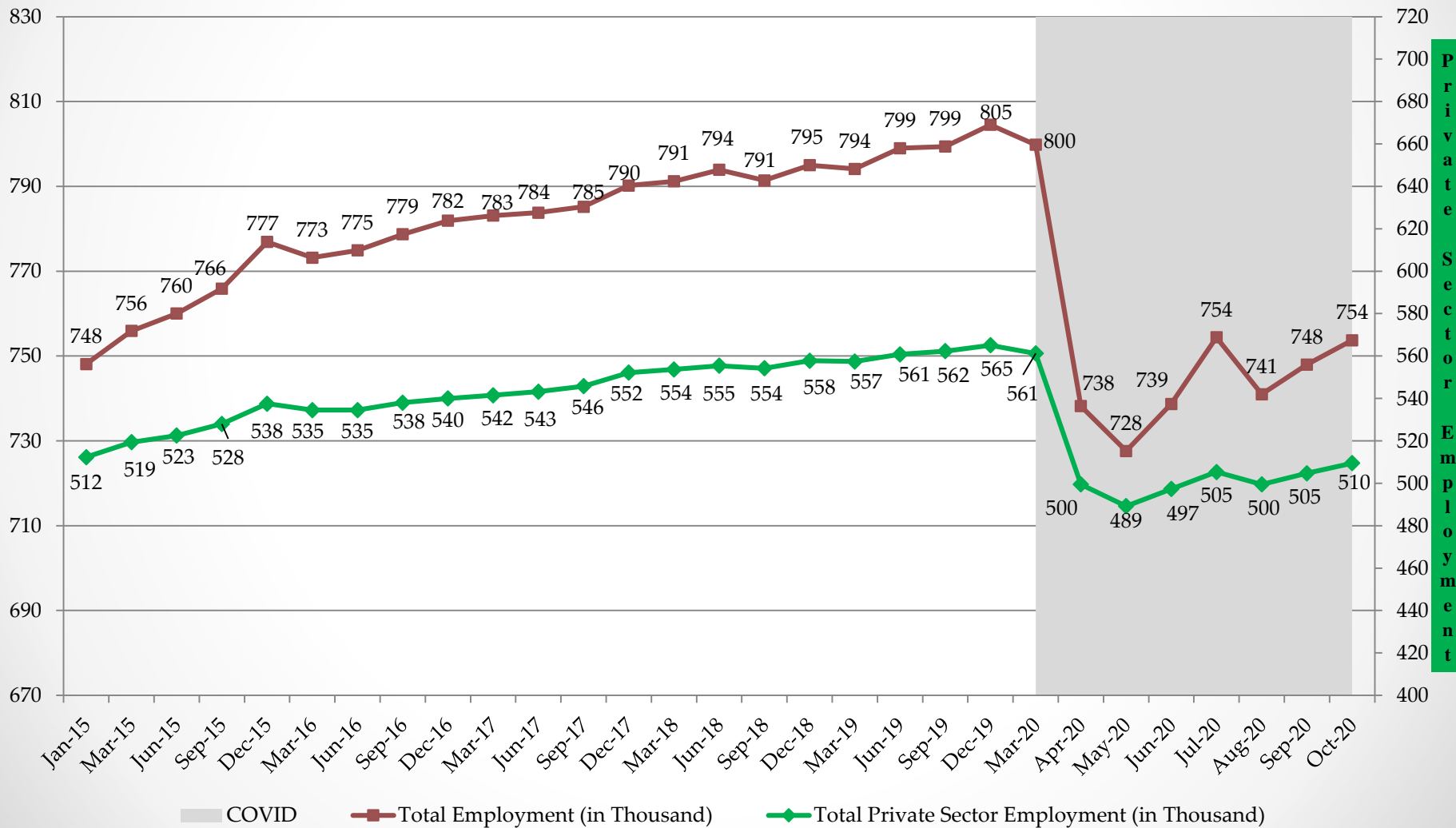




Department of Employment Services

Washington, DC's lead workforce development and labor agency

Total Employment and Private Sector Employment in D.C. (Jan.2015 - Oct. 2020 (In Thousands))

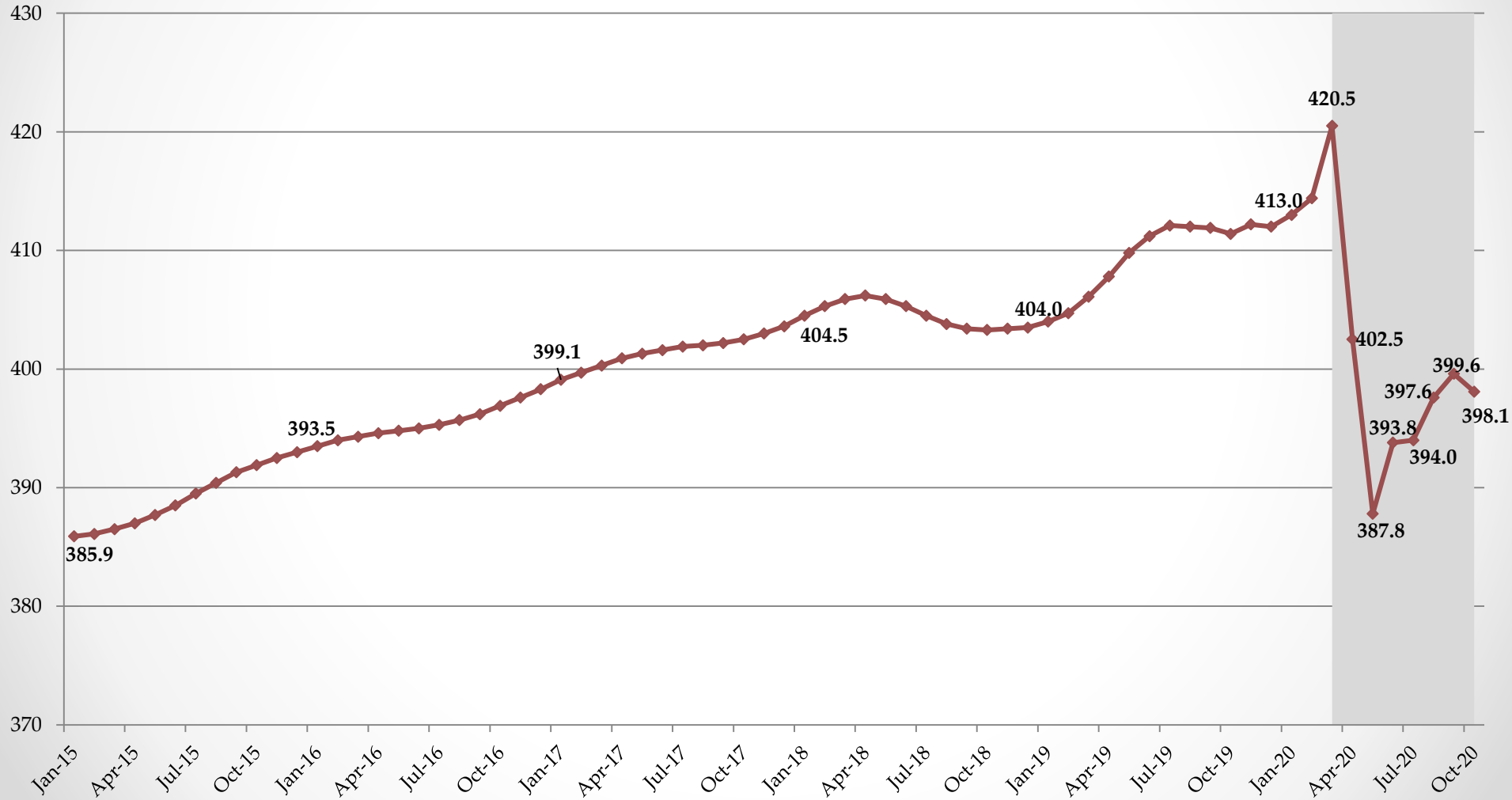




Department of Employment Services

Washington, DC's lead workforce development and labor agency

The District's Labor Force (Jan. 2015 - Oct. 2020) (In Thousands)

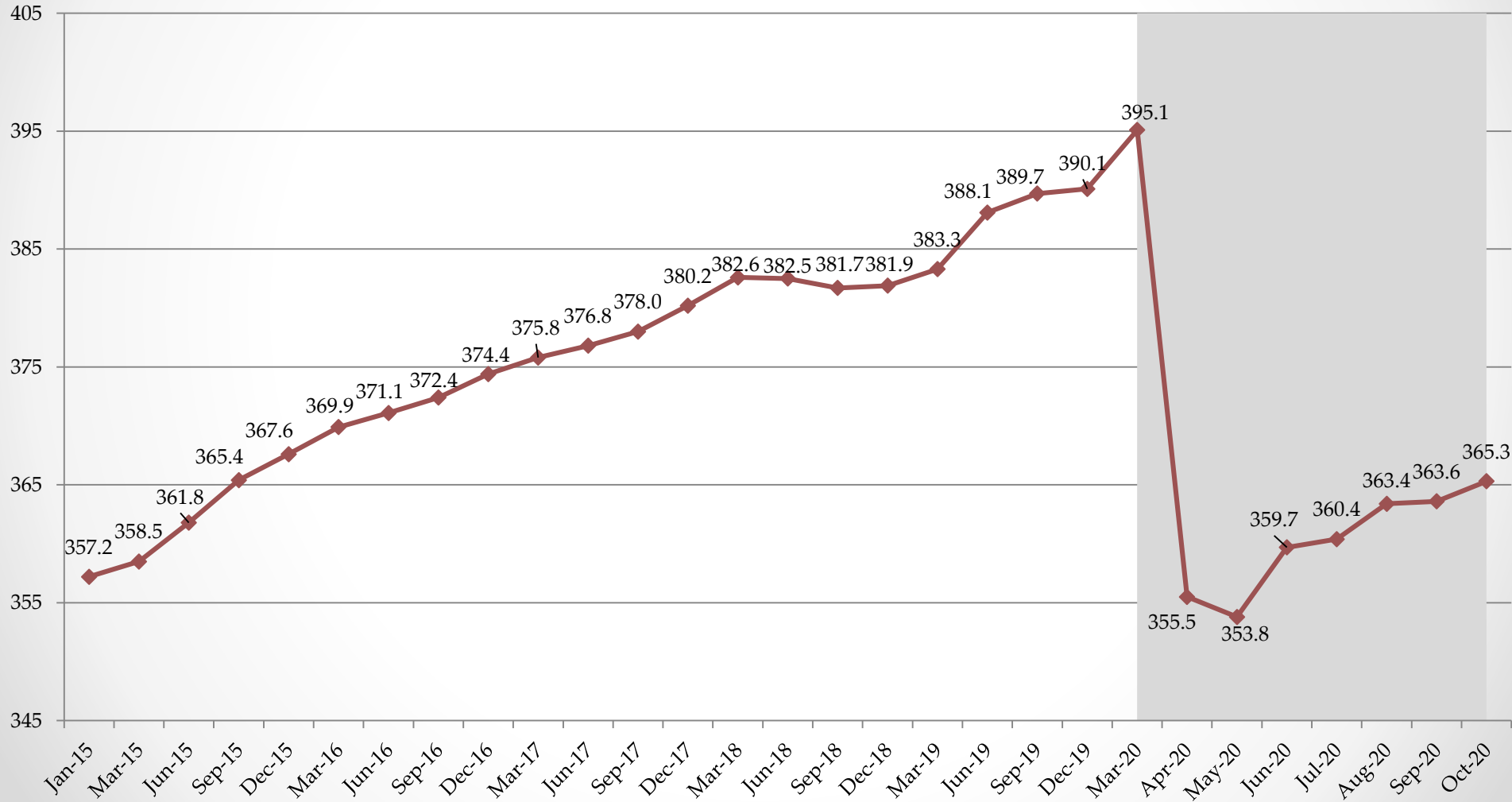




Department of Employment Services

Washington, DC's lead workforce development and labor agency

Employed D.C. Residents (Jan. 2015 - Oct. 2020) (In Thousands)

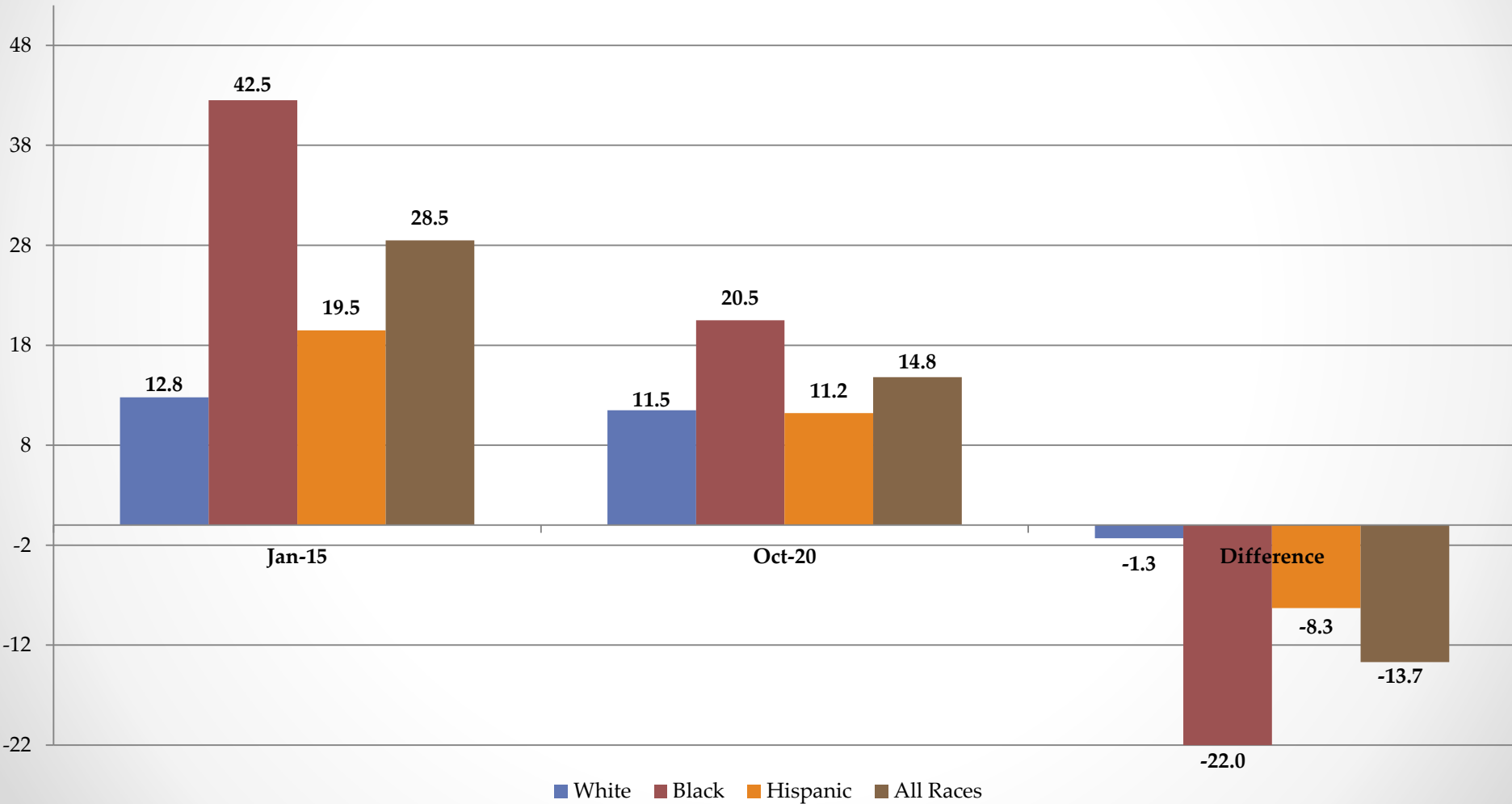




Department of Employment Services

Washington, DC's lead workforce development and labor agency

Median Duration of Unemployment (in weeks) (Jan. 2015 - Oct. 2020)

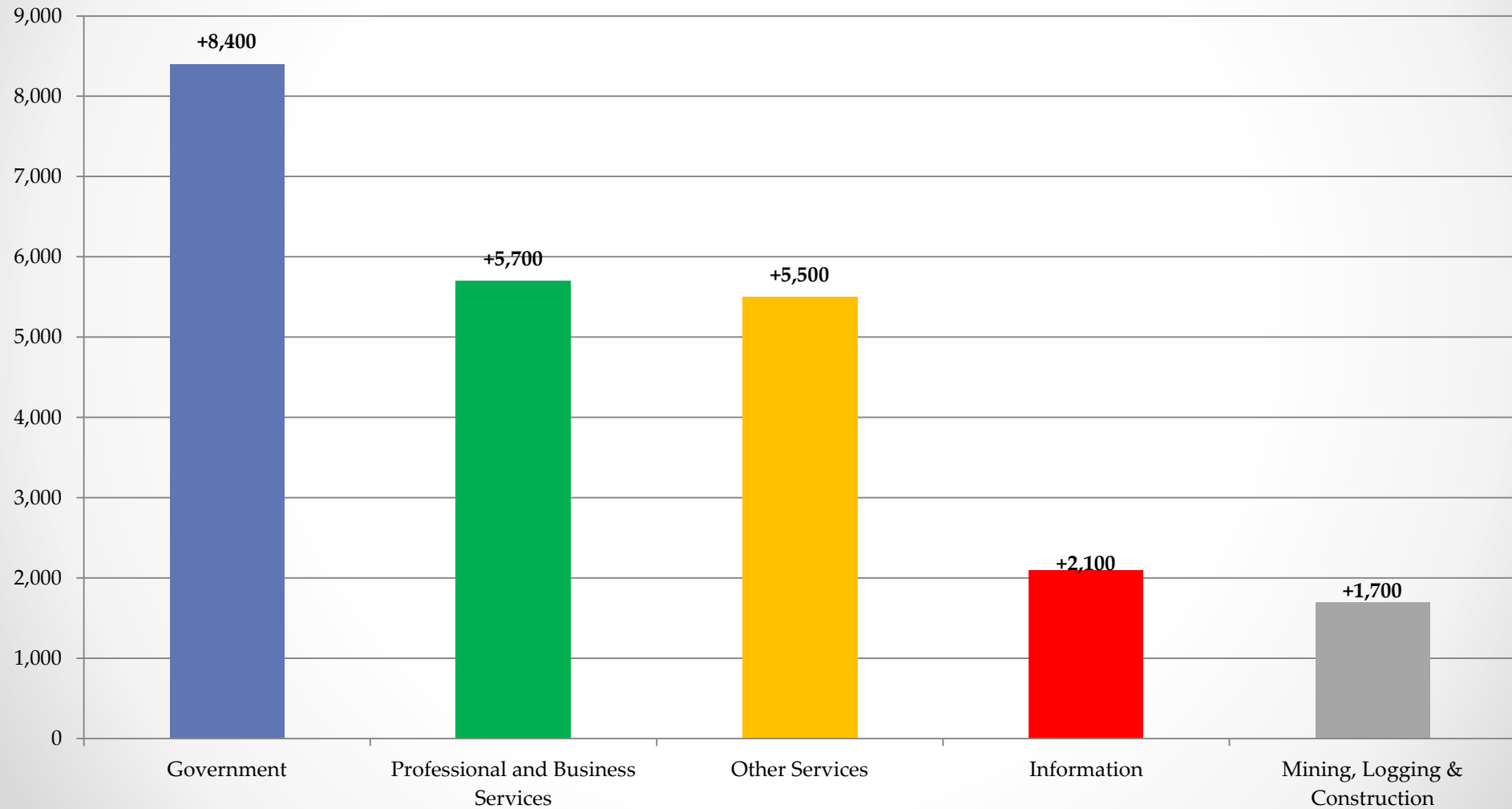




Department of Employment Services

Washington, DC's lead workforce development and labor agency

Top 5 Industry with Highest Employment Increase (Jan.2015 – Oct.2020)

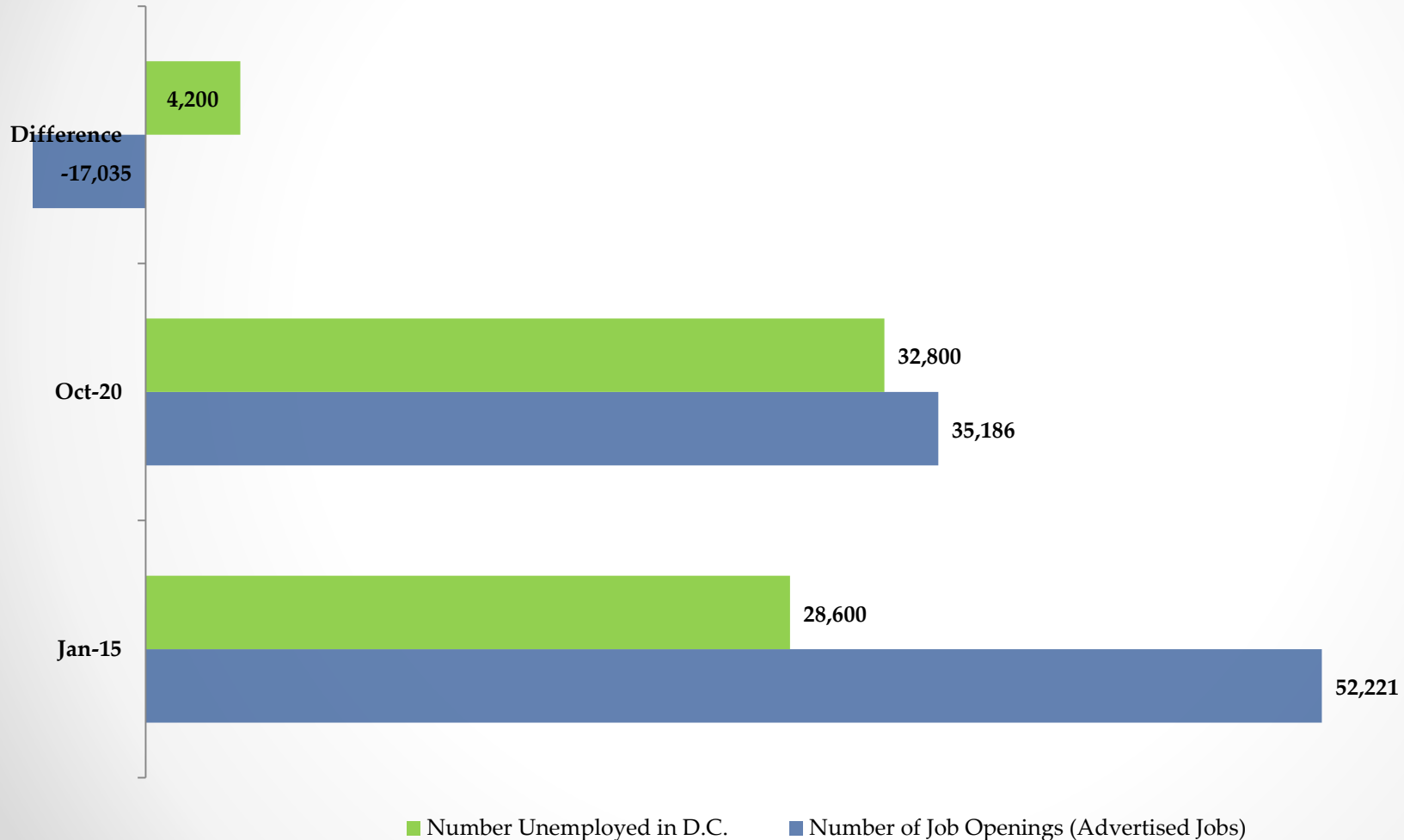




Department of Employment Services

Washington, DC's lead workforce development and labor agency

Job Openings vs. Number of Unemployed DC Residents (Jan. 2015 - Oct. 2020)

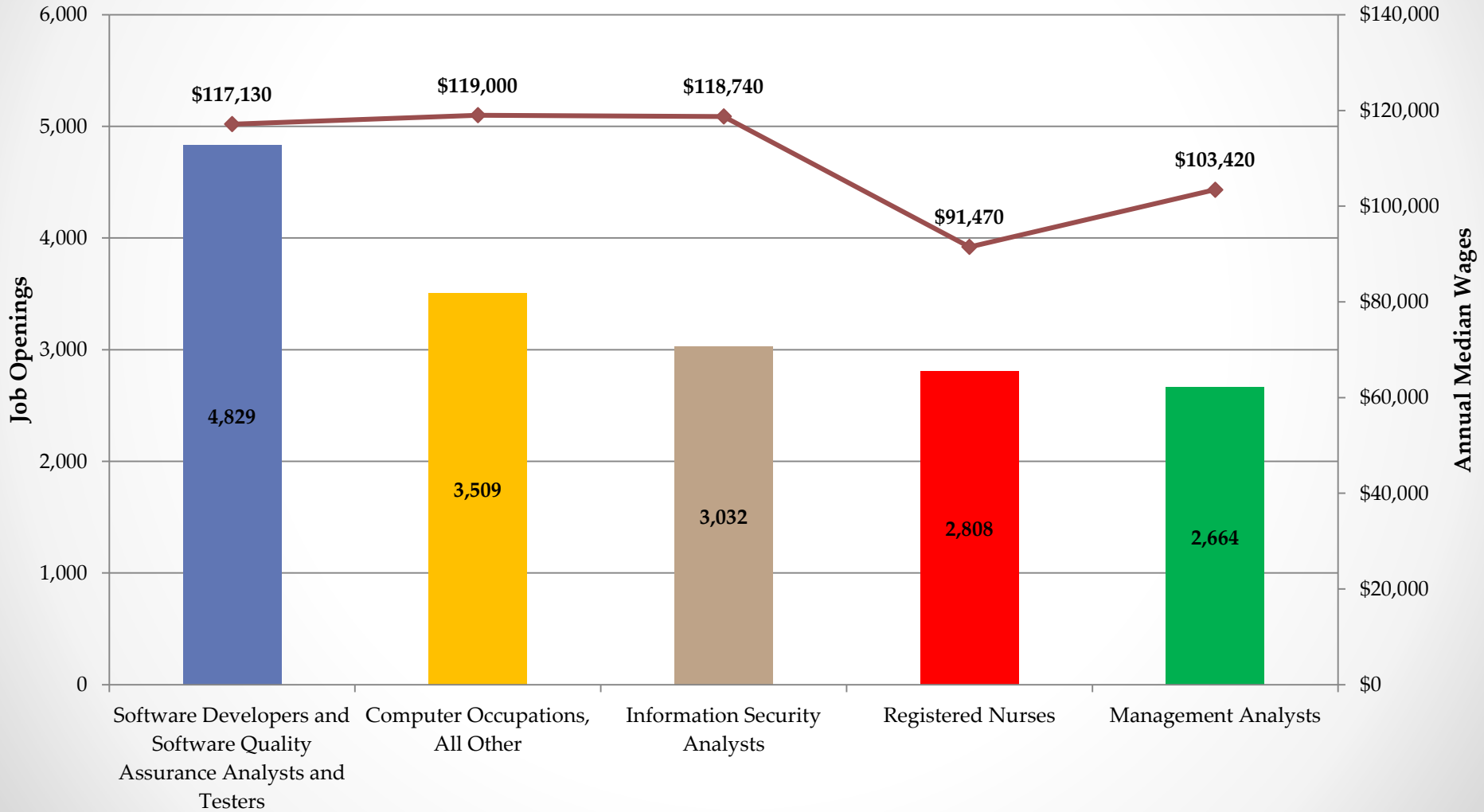




Department of Employment Services

Washington, DC's lead workforce development and labor agency

Top 5 Job Openings: January 2018 - October 2020 (Average Monthly Unique Job Postings)

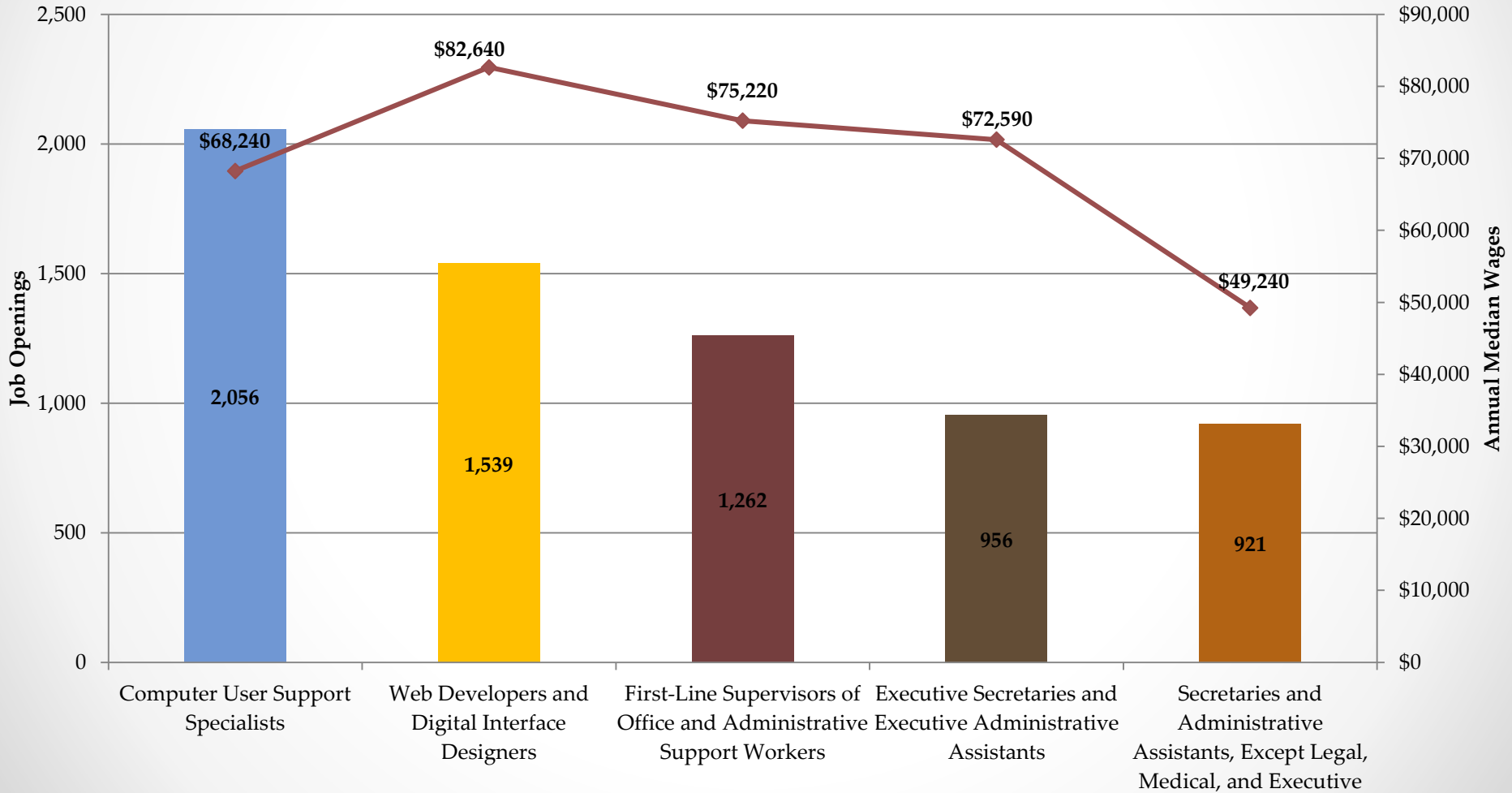




Department of Employment Services

Washington, DC's lead workforce development and labor agency

Top 5 Job Openings Requiring Less Than Bachelor's Degree: January 2018 - October 2020 (Avg Monthly Unique Job Postings)





Department of Employment Services

Washington, DC's lead workforce development and labor agency

This workforce product was funded by a grant awarded by the U.S. Department of Labor's Employment and Training Administration. The product was created by the recipient and does not necessarily reflect the official position of the U.S. Department of Labor. The U.S. Department of Labor makes no guarantees, warranties, or assurances of any kind, express or implied, with respect to such information, including any information on linked sites and including, but not limited to, accuracy of the information or its completeness, timeliness, usefulness, adequacy, continued availability, or ownership. This product is copyrighted by the institution that created it. Internal use by an organization and/or personal use by an individual for non-commercial purposes is permissible. All other uses require the prior authorization of the copyright owner.



Department of Employment Services

Washington, DC's lead workforce development and labor agency

Contact Information

- Opeyemi Fasakin, Labor Economist
- Thomas Tsegaye, Labor Economist
- Data Request: <https://app.smartsheet.com/b/form/631658c092ef4395ab27b76716df8068>
- Email: Imi.does@dc.gov
- Phone: (202) 671-1633
- Website: www.does.dc.gov
- <http://does.dc.gov/page/labor-statistics>