



Department of Employment Services
Washington, DC's lead workforce development and labor agency

D.C. Labor Market Indicators: January 2015 - September 2020

Dr. Unique Morris-Hughes, Director

Ta-Tanisha Wallace, Chief Strategist for
Education and Workforce Innovation

Saikou A. Diallo, Chief Economist

**Prepared by the Office of Labor Market Research and
Performance**



Department of Employment Services

Washington, DC's lead workforce development and labor agency

Highlights

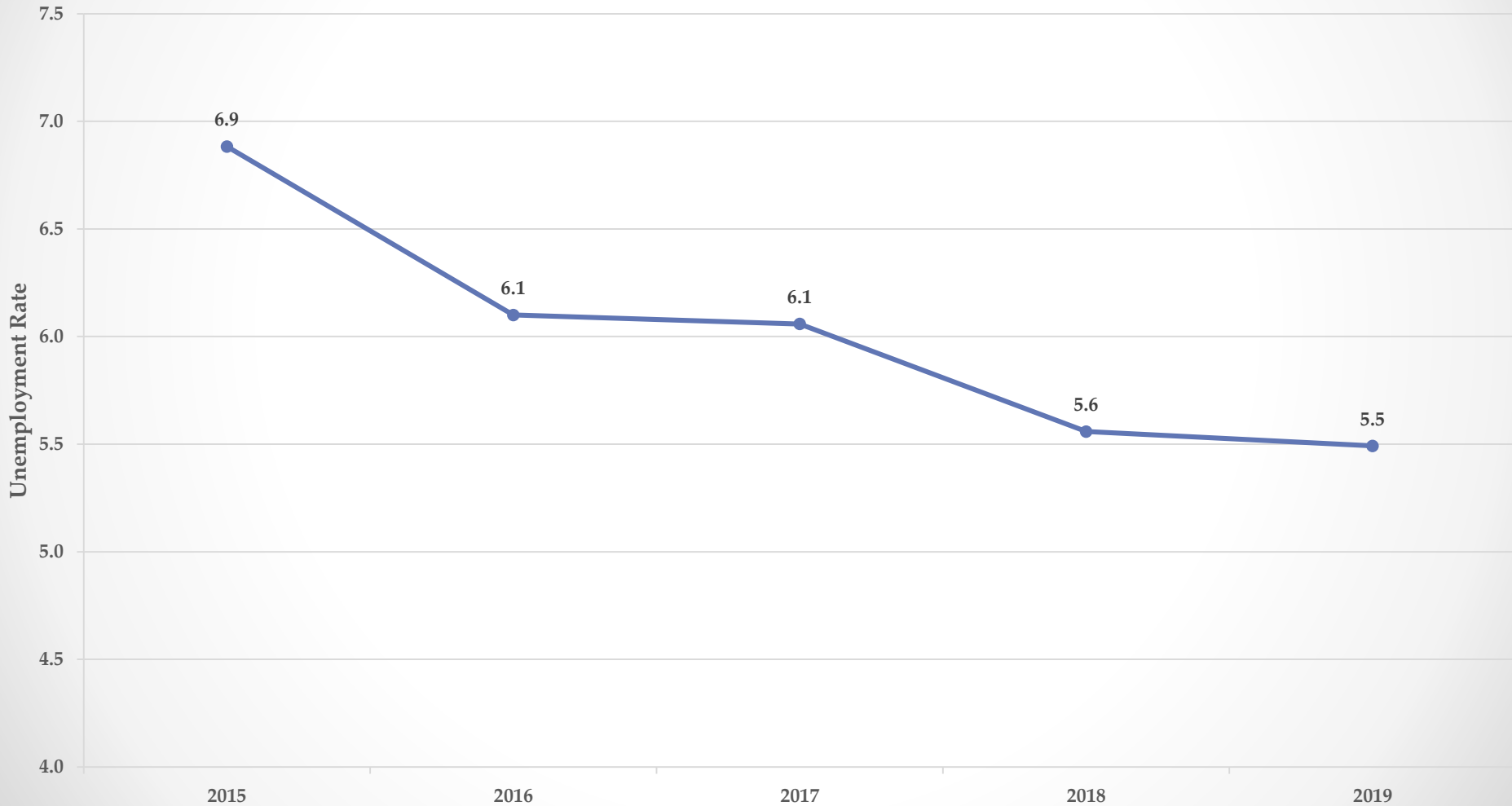
- From January 2015 to September 2020:
 - ❖ The unemployment rate in DC increased by **1.3** percentage points (or **17.6%** increase);
 - ❖ Unemployment rate in Ward 7 and Ward 8 increased by **1.7** percentage points (**13.2%** increase) and **2.8** percentage points (**17.4%** increase) respectively;
 - ❖ Total number of DC residents that are employed increased by **5,100**;
 - ❖ Total number of jobs in DC decreased by **4,400**;
 - ❖ Initial monthly unemployment insurance benefits claimants increased by **276%**;
 - ❖ Total number of unemployed DC residents increased by **5,900** people;
 - ❖ In DC there are **1.0** jobs available (advertised) for **1** unemployed DC resident;
 - ❖ The average weekly median duration of unemployment for Black and African American decreased by **22.3** weeks;
 - ❖ The private sector total number of payroll jobs in the District decreased by **11,900** jobs or **-2.32%** decrease from January 2015;
 - ❖ Other Services has the highest employment increase by industry with **6,300** since **January 2015**;
 - ❖ The highest in-demand occupation is Software Developers and Software Quality Assurance Analysts and Testers with an average monthly opening of **4,834**;
 - ❖ The highest in-demand occupation requiring less than a bachelor's degree is Computer User Support Specialists with an average monthly opening of **2,082**.



Department of Employment Services

Washington, DC's lead workforce development and labor agency

DC Annual Average Unemployment Rate (2015-2019)

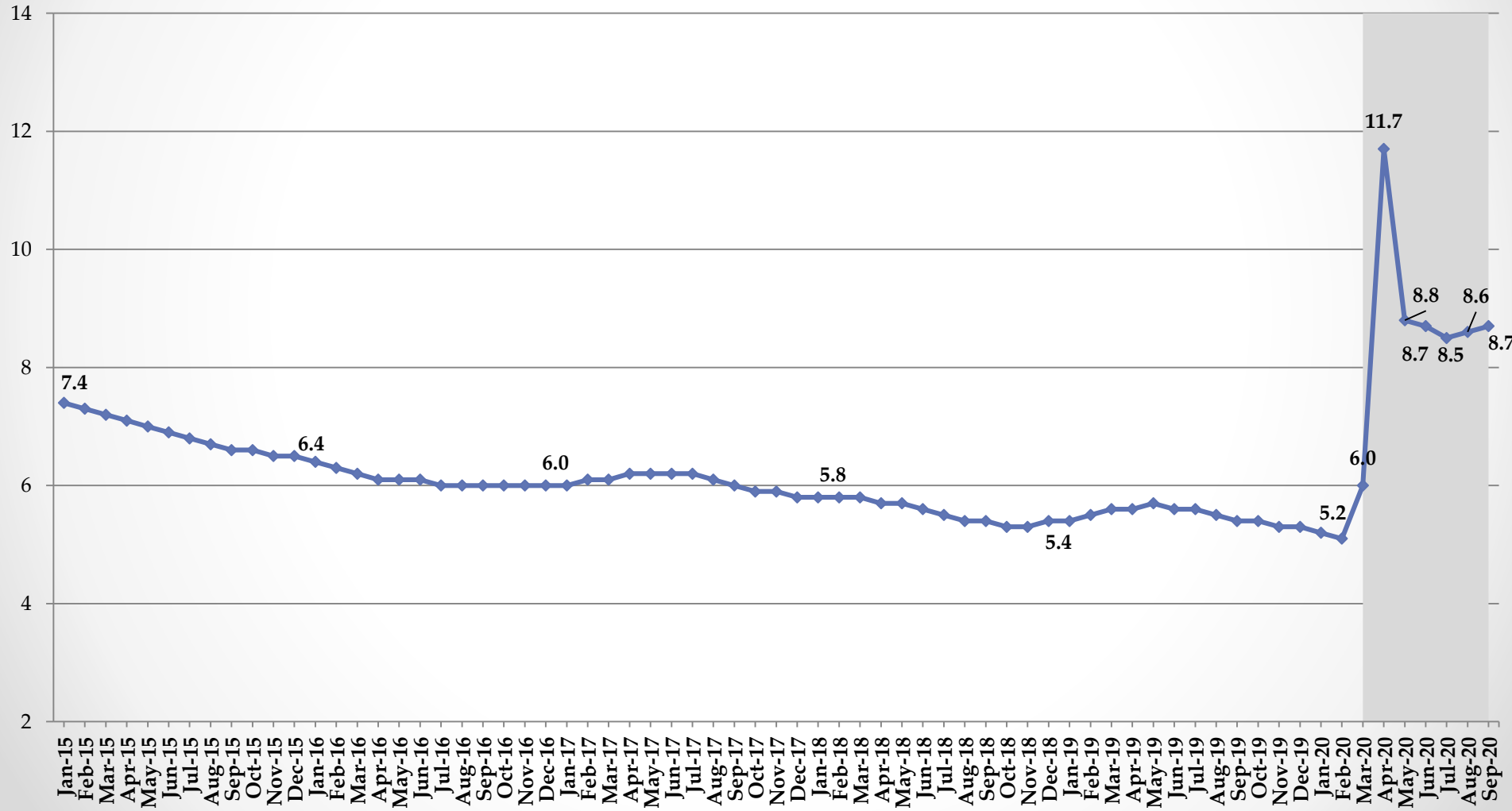




Department of Employment Services

Washington, DC's lead workforce development and labor agency

The District's Monthly Unemployment Rate: Jan. 2015 - Sept. 2020

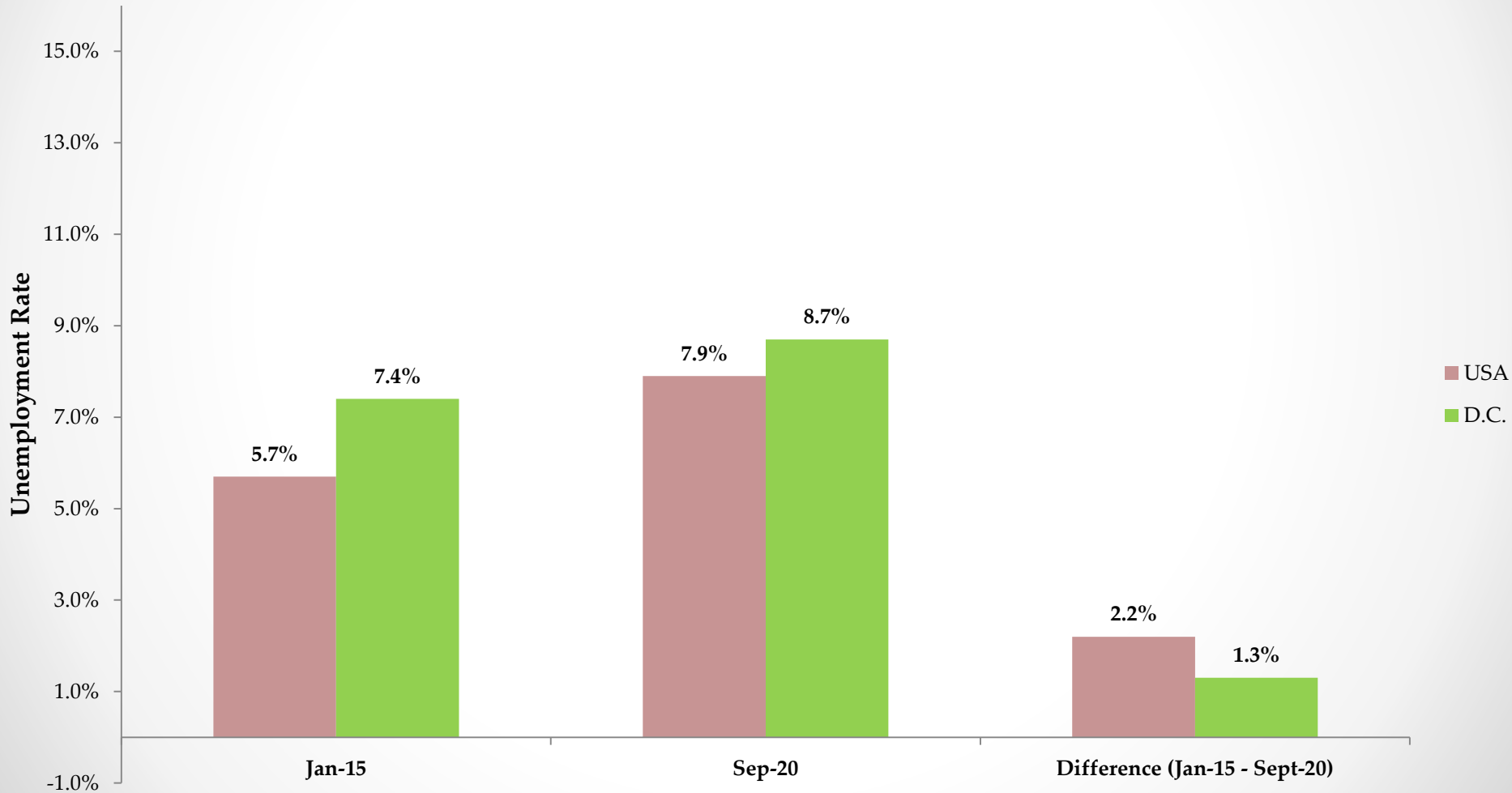




Department of Employment Services

Washington, DC's lead workforce development and labor agency

Unemployment Rate (January 2015 - September 2020)

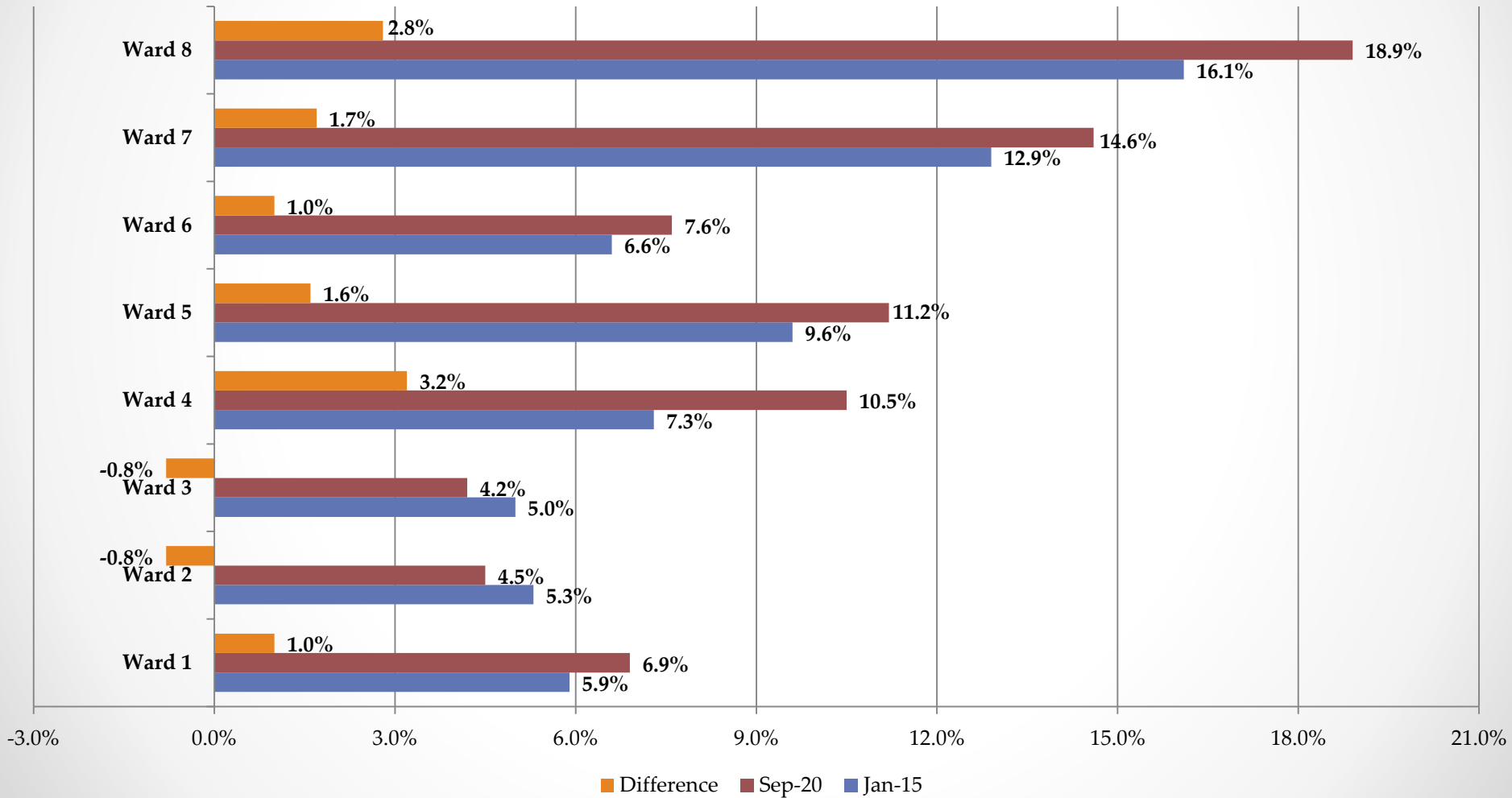




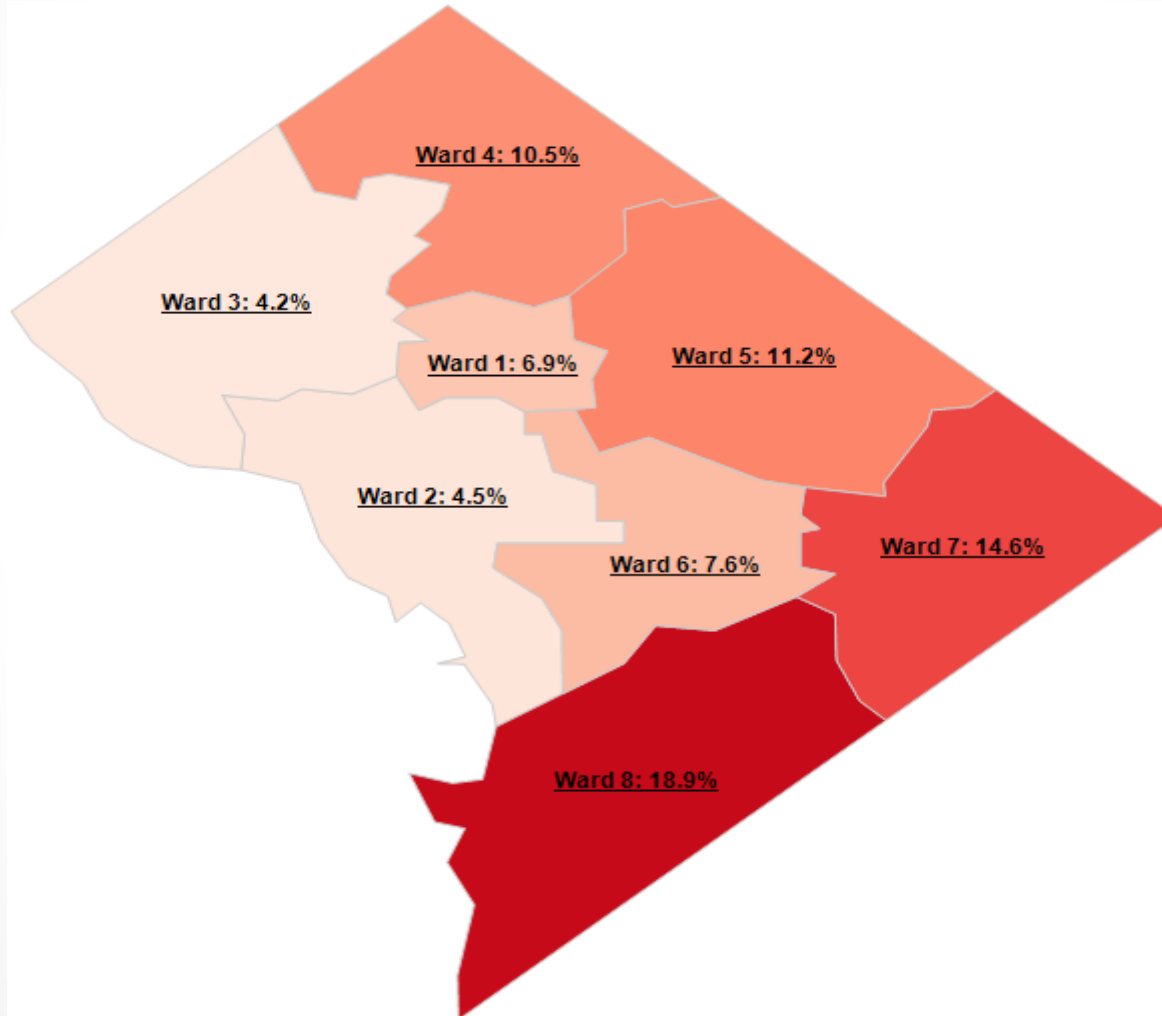
Department of Employment Services

Washington, DC's lead workforce development and labor agency

Unemployment Rate by Ward (January 2015 - September 2020)



Unemployment Rate by Ward: September 2020

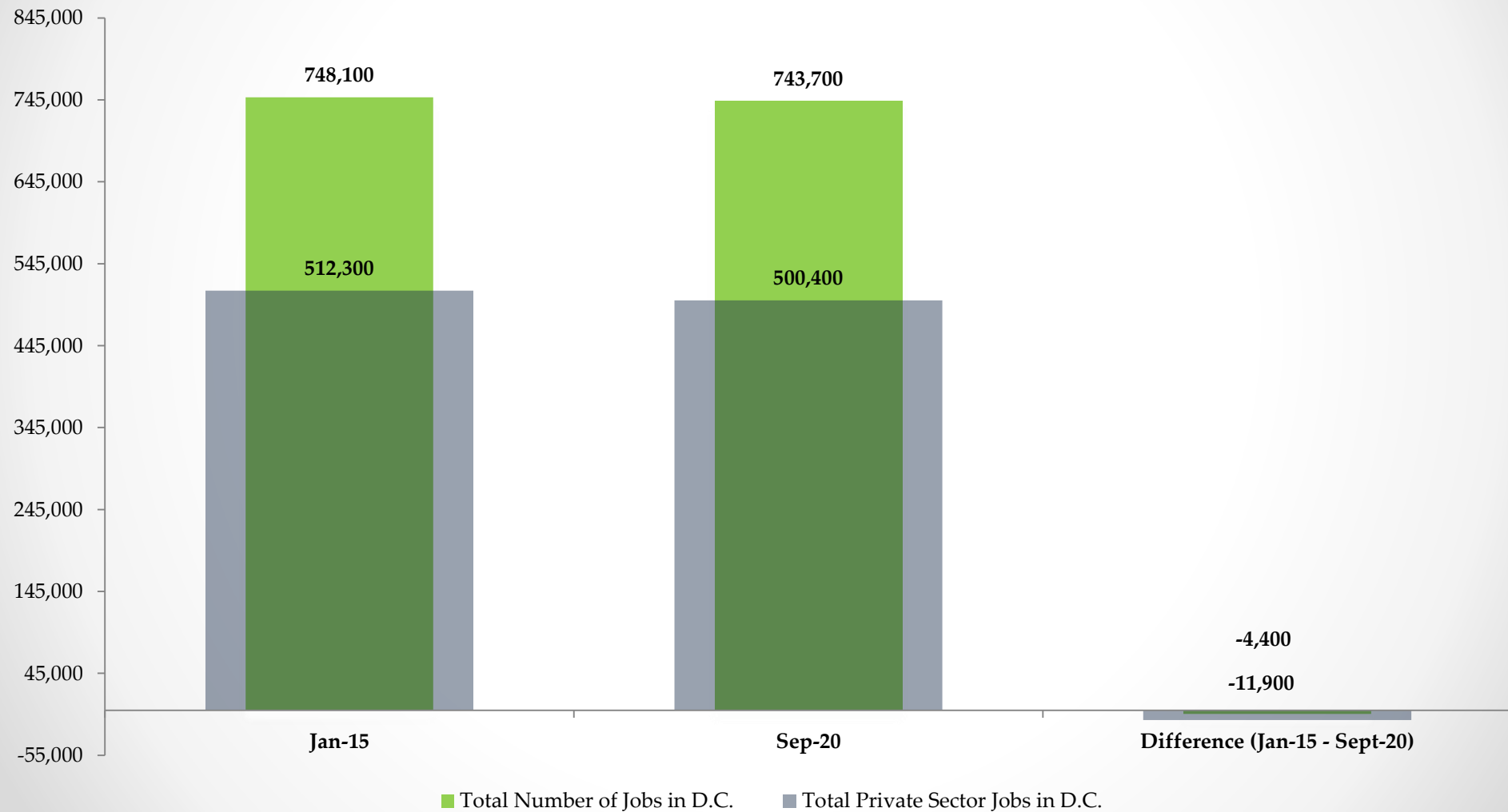




Department of Employment Services

Washington, DC's lead workforce development and labor agency

Total Number of Jobs and Total Private Sector Jobs in DC (Jan. 2015 - Sept. 2020)

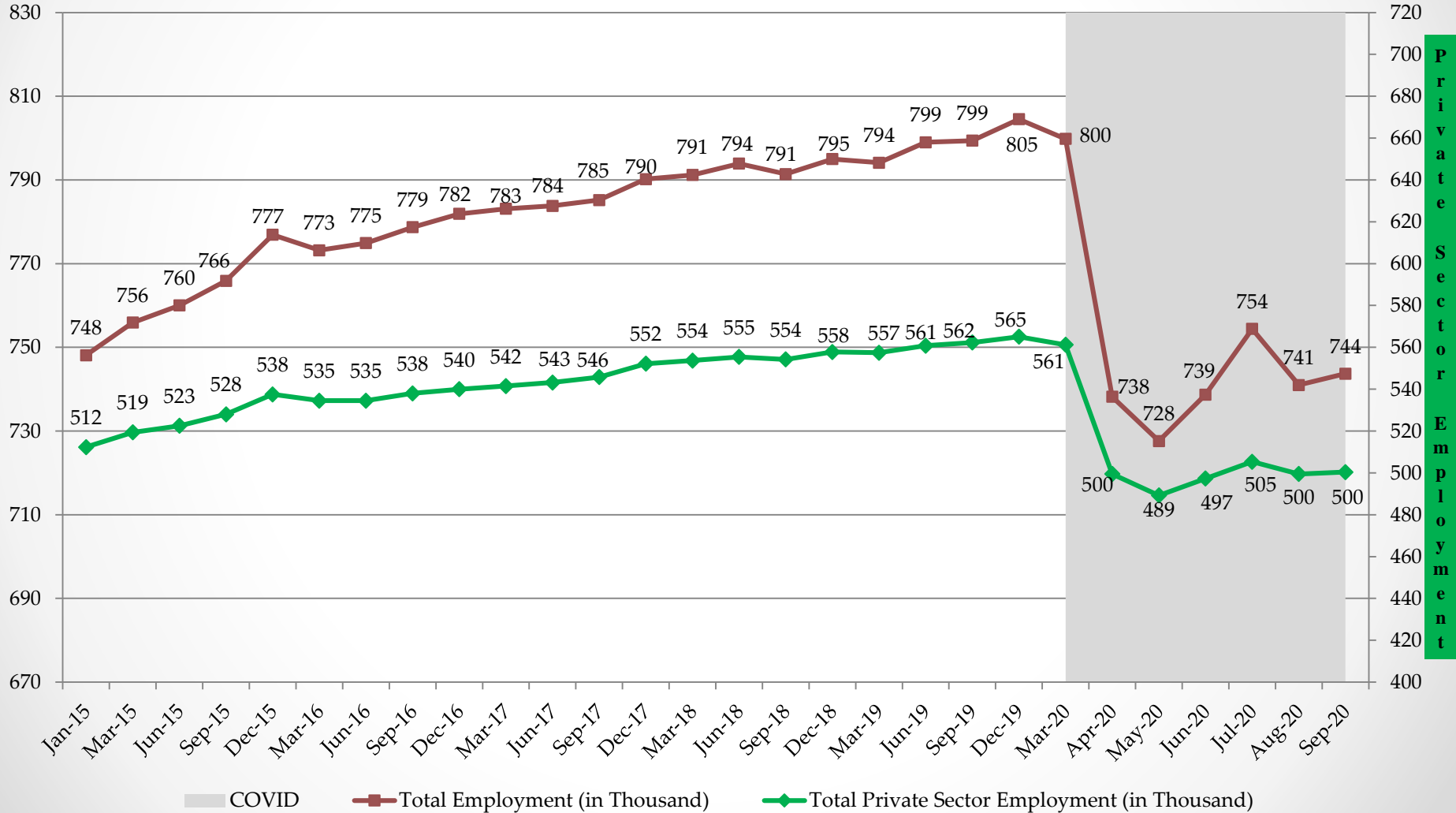




Department of Employment Services

Washington, DC's lead workforce development and labor agency

Total Employment and Private Sector Employment in D.C. (Jan.2015 - Sept. 2020 (In Thousands))

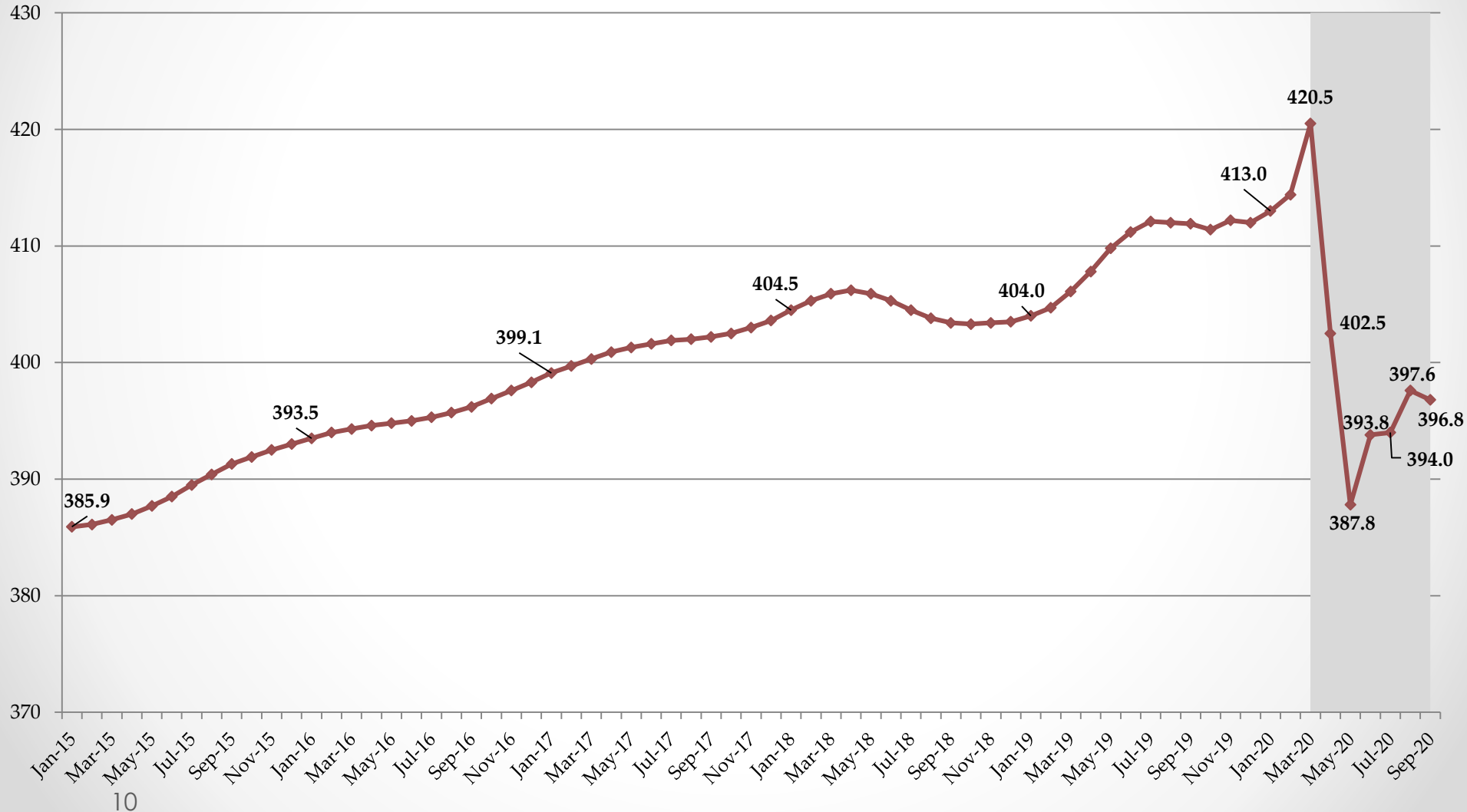




Department of Employment Services

Washington, DC's lead workforce development and labor agency

The District's Labor Force (Jan. 2015 - Sept. 2020) (In Thousands)

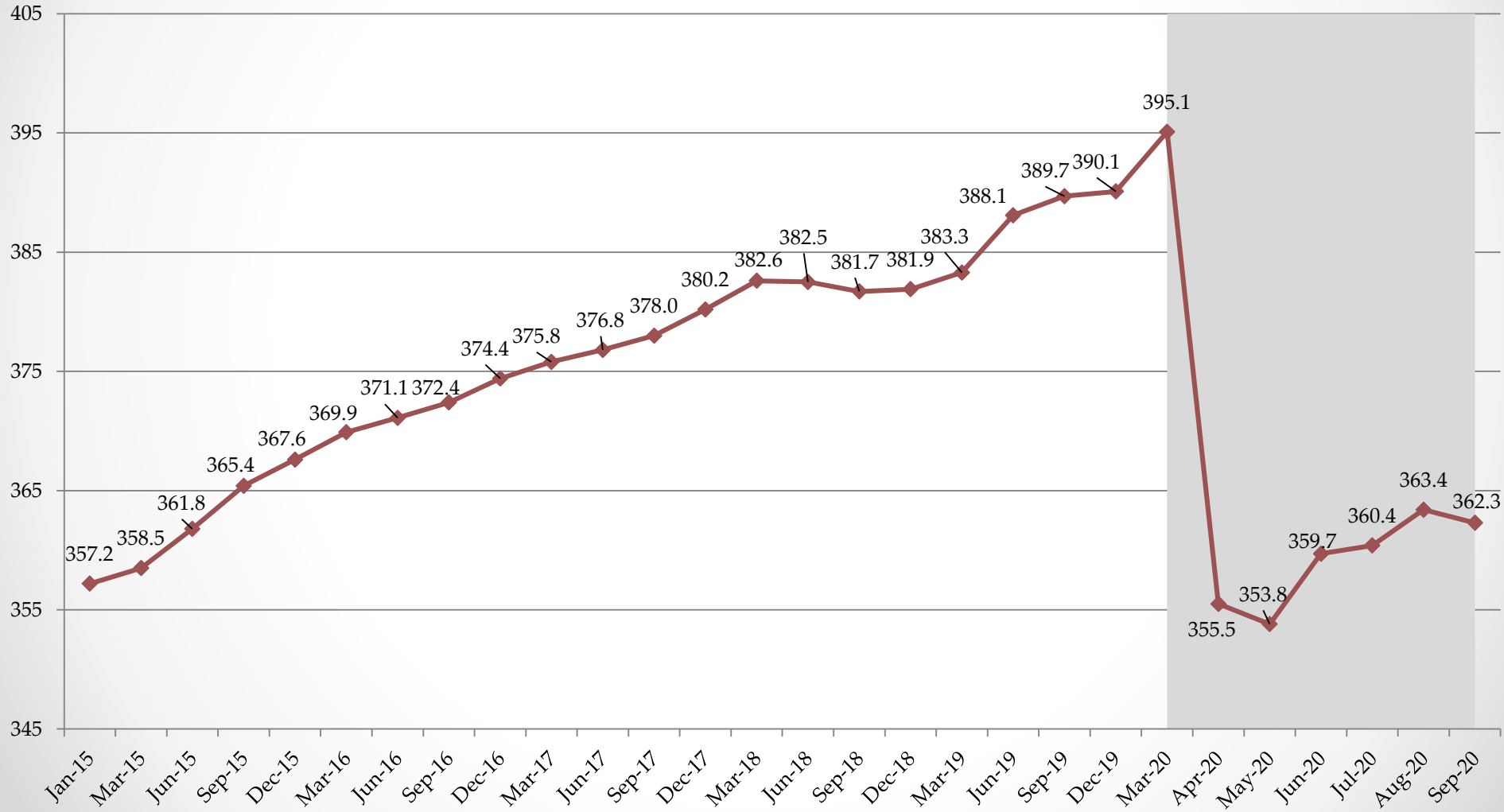




Department of Employment Services

Washington, DC's lead workforce development and labor agency

Employed D.C. Residents (Jan. 2015 - Sept. 2020) (In Thousands)

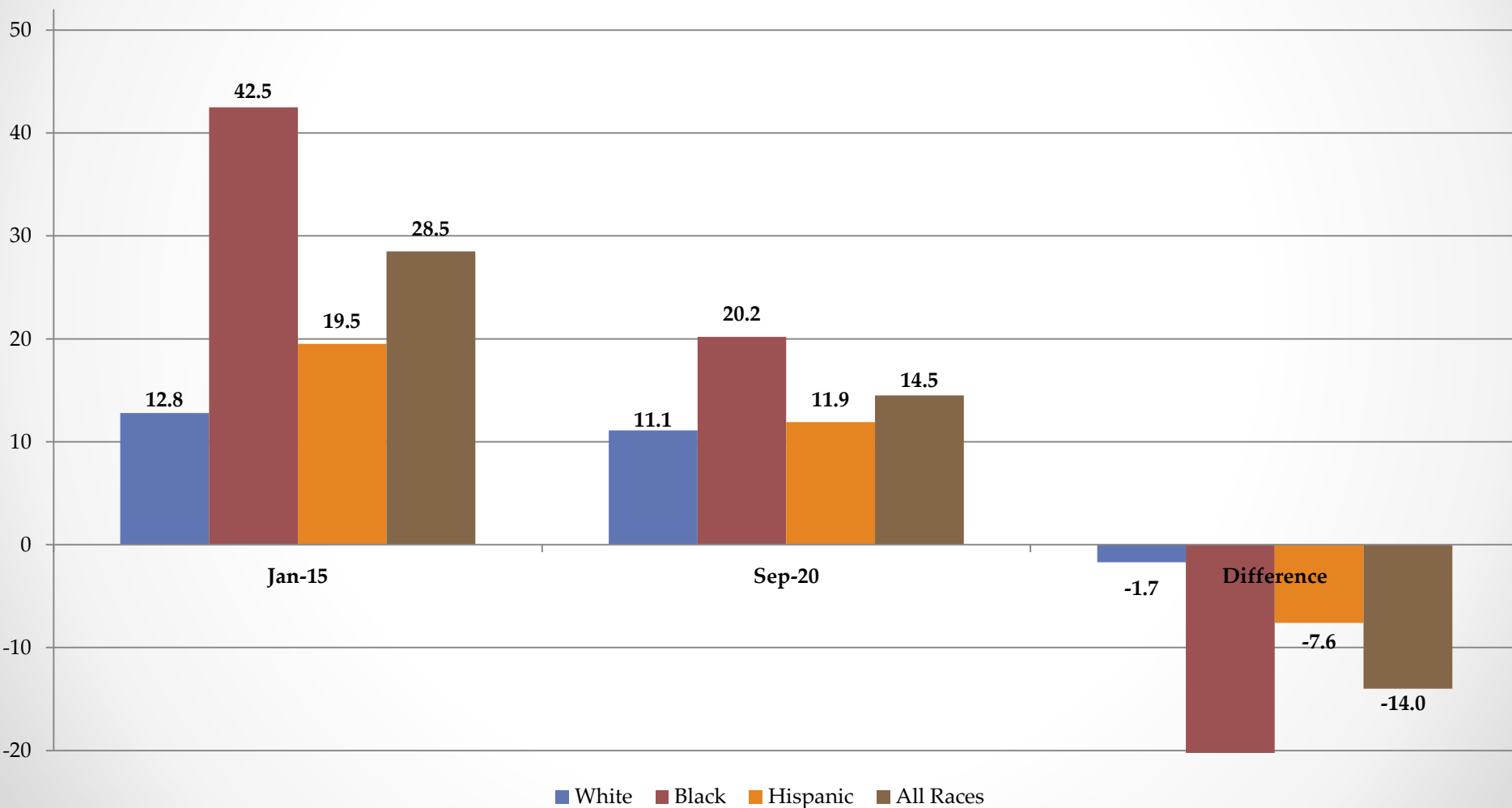




Department of Employment Services

Washington, DC's lead workforce development and labor agency

Median Duration of Unemployment (in weeks) (Jan. 2015 - Sept. 2020)

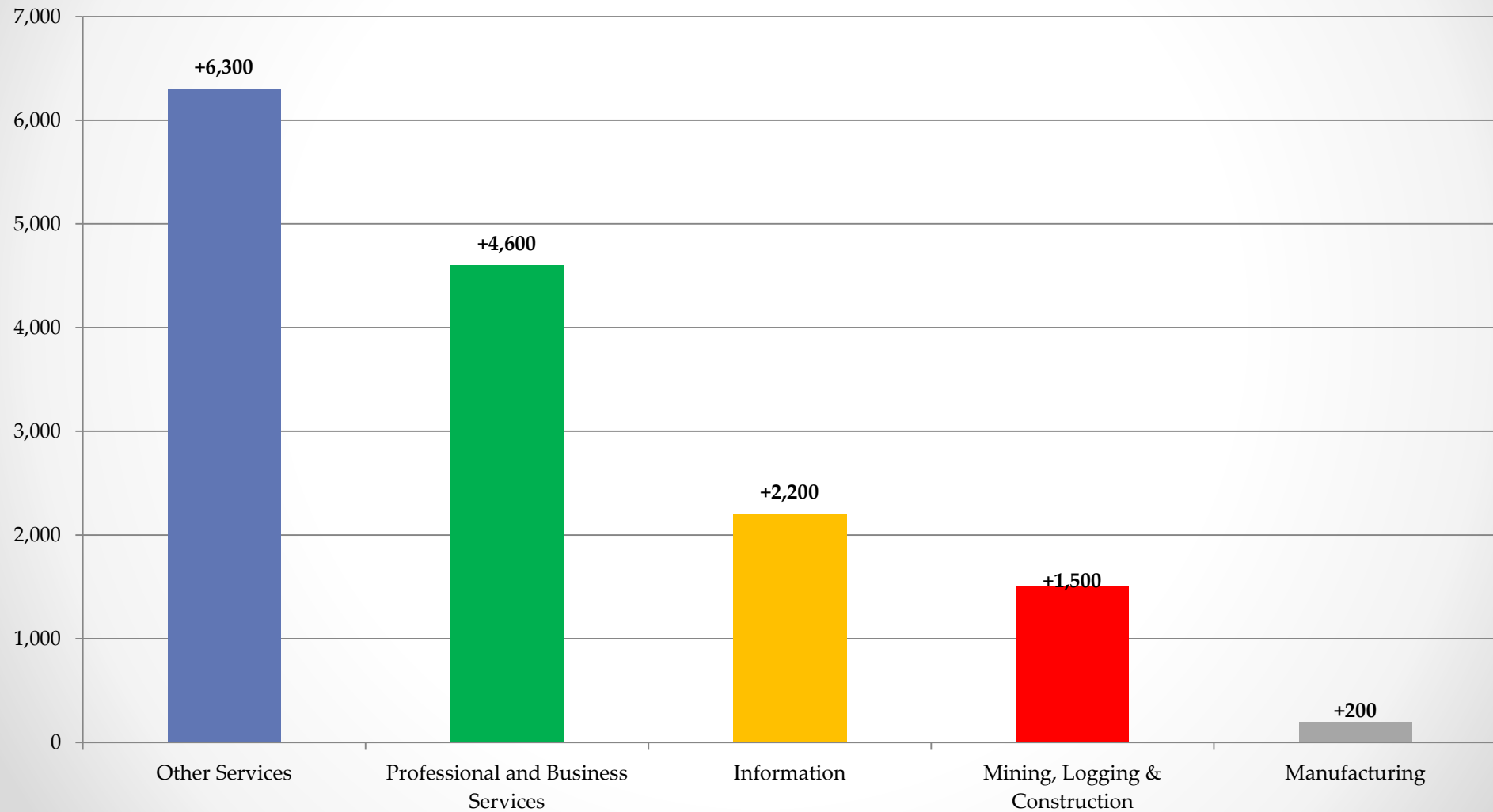




Department of Employment Services

Washington, DC's lead workforce development and labor agency

Top 5 Industry with Highest Employment Increase (Jan.2015 – Sept.2020)

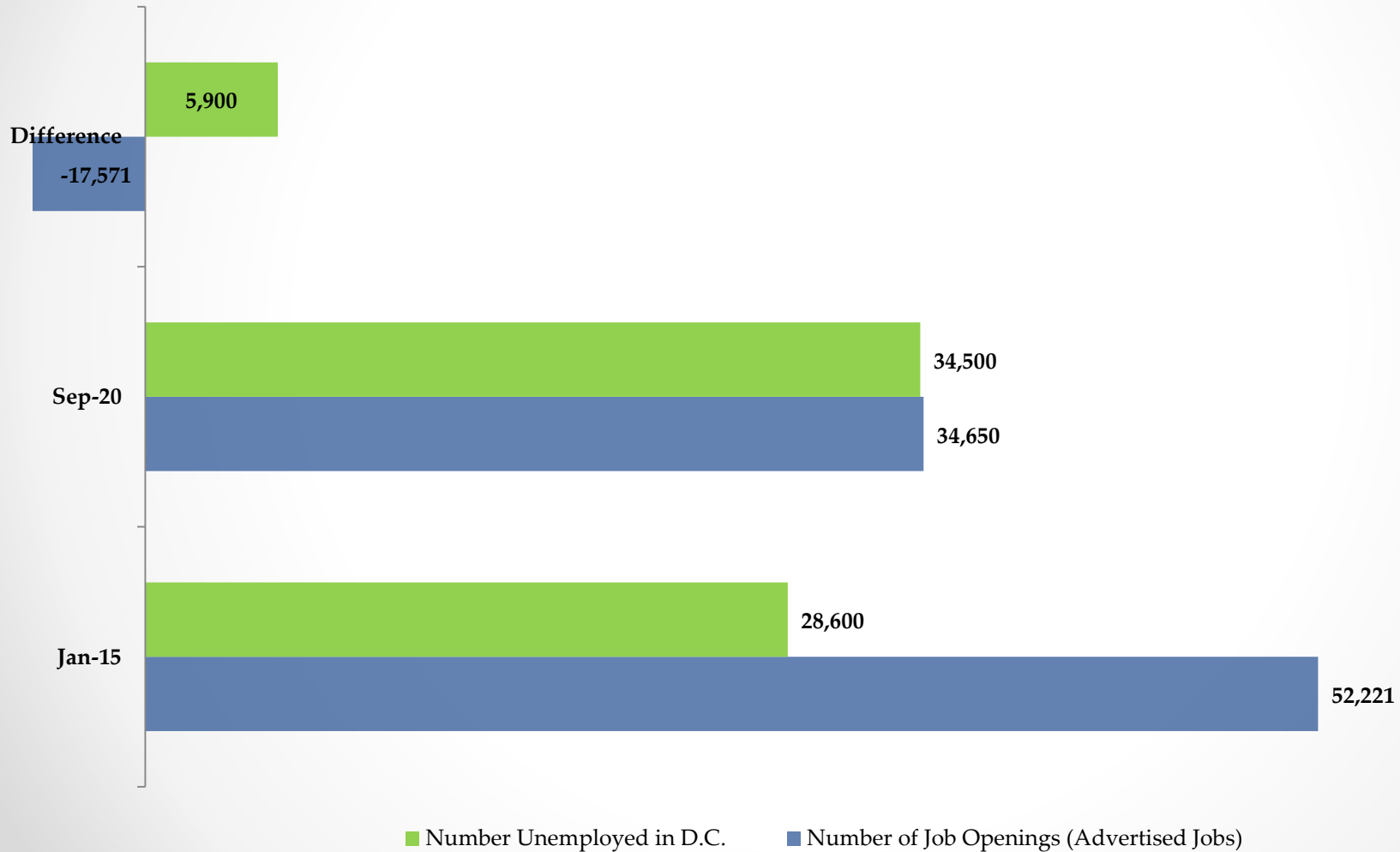




Department of Employment Services

Washington, DC's lead workforce development and labor agency

Job Openings vs. Number of Unemployed DC Residents (Jan. 2015 - Sept. 2020)

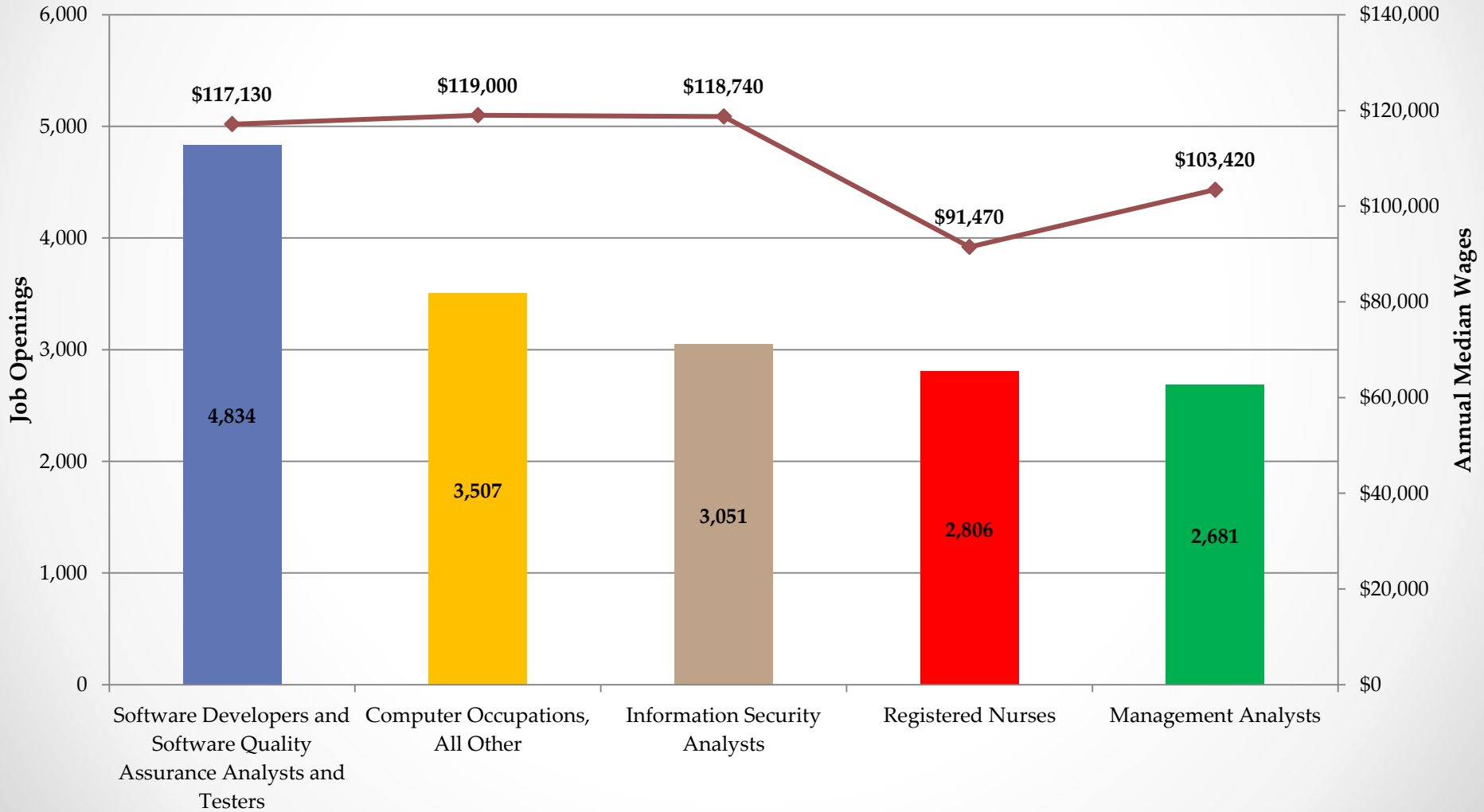




Department of Employment Services

Washington, DC's lead workforce development and labor agency

Top 5 Job Openings: January 2018 - September 2020 (Average Monthly Unique Job Postings)

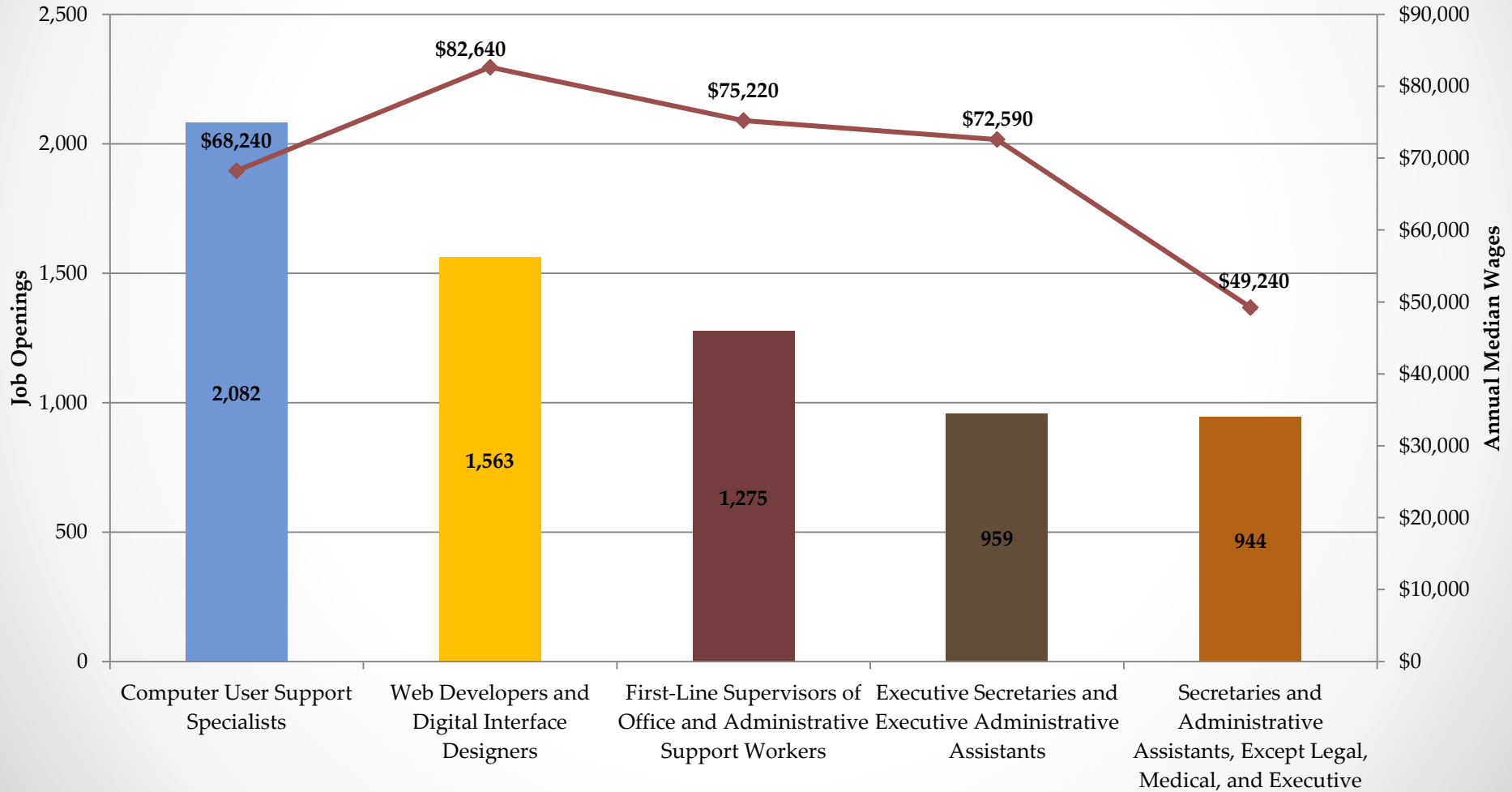




Department of Employment Services

Washington, DC's lead workforce development and labor agency

Top 5 Job Openings Requiring Less Than Bachelor's Degree: January 2018 - September 2020 (Avg Monthly Unique Job Postings)





Department of Employment Services

Washington, DC's lead workforce development and labor agency

Contact Information

- Opeyemi Fasakin, Labor Economist
- Thomas Tsegaye, Labor Economist
- Data Request: <https://app.smartsheet.com/b/form/631658c092ef4395ab27b76716df8068>
- Email: Imi.does@dc.gov
- Phone: (202) 671-1633
- Website: www.does.dc.gov
- <http://does.dc.gov/page/labor-statistics>