



**Department of Employment Services**  
*Washington, DC's lead workforce development and labor agency*

---

# D.C. Labor Market Indicators: January 2015 - September 2024

Dr. Unique Morris-Hughes, Director

Victor Robertson, Chief Strategist for Education  
and Workforce Innovation

Dr. Rebati Mendali, Chief Economist/Associate  
Director

**Prepared by the Office of Labor Market Research and Performance**



# Department of Employment Services

*Washington, DC's lead workforce development and labor agency*

---

## Highlights

From January 2015 to September 2024:

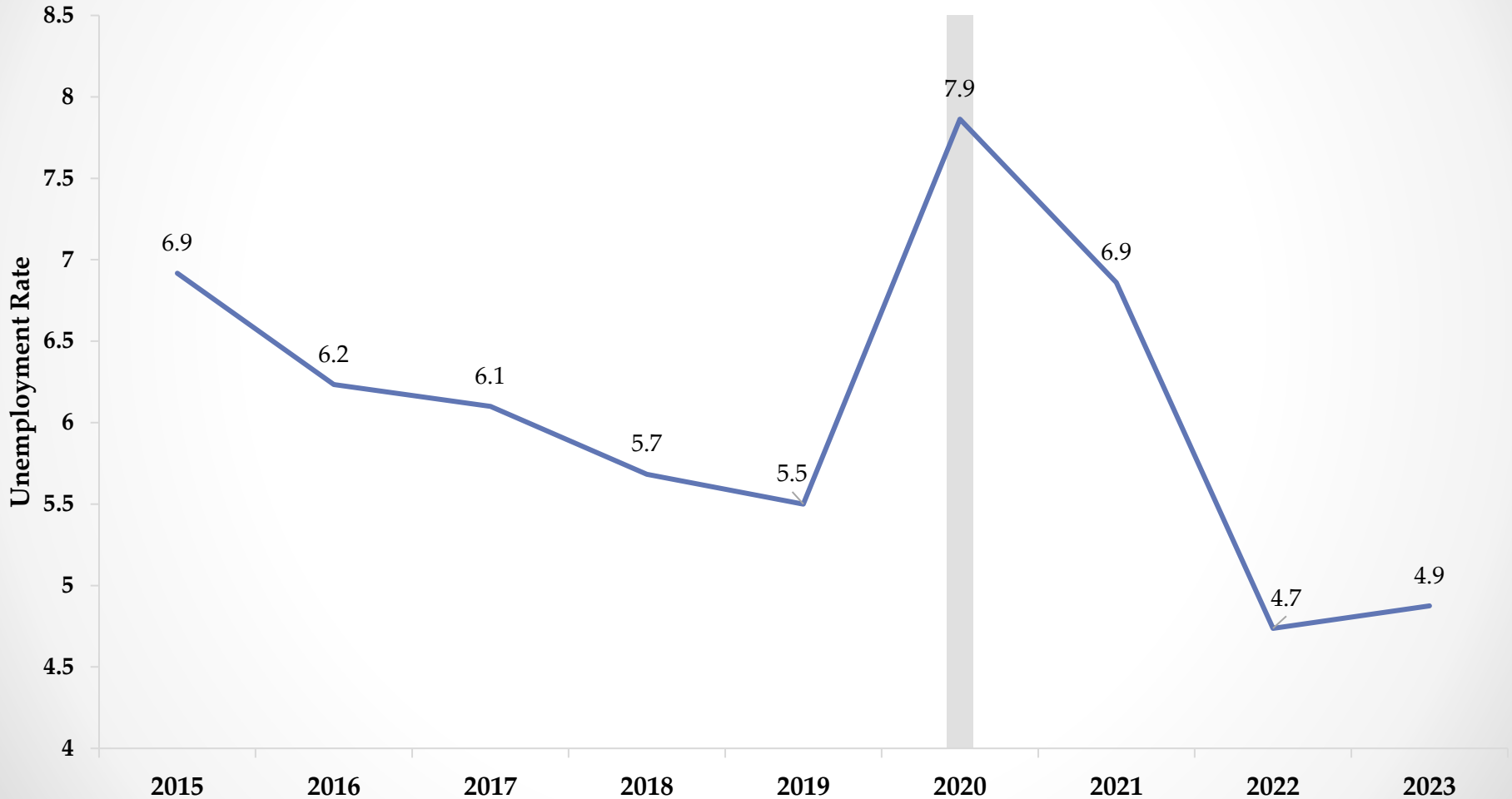
- ❖ The unemployment rate in DC decreased by **1.7** percentage points from **7.4%** to **5.7%**;
- ❖ Unemployment rate in Ward 7 and Ward 8 decreased by **3.0** percentage points (**12.9%** to **9.9%**) and **3.8** percentage points (**16.1%** to **12.3%**) respectively;
- ❖ Total number of DC residents that are employed increased by **25,900**;
- ❖ Total number of jobs in DC increased by **26,700**;
- ❖ Initial monthly unemployment insurance benefits claimants decreased by **6.37%**;
- ❖ Total number of unemployed DC residents decreased by **5,100** people;
- ❖ The average weekly median duration of unemployment for Black and African American decreased by **25.3** weeks;
- ❖ The private sector total number of payroll jobs in the District increased by **28,100** jobs (**5.49%** increase);
- ❖ Professional and Business Services has the highest employment increase among industries with employment increased by **18,800**
- ❖ The highest in-demand occupation is Computer Occupations, All Other with an average monthly opening of **763** jobs;
- ❖ The highest in-demand occupation requiring less than a bachelor's degree is Secretaries and Administrative Assistants, Except Legal Medical & Executive with an average monthly opening of **399** jobs.



# Department of Employment Services

*Washington, DC's lead workforce development and labor agency*

## D.C.'s Annual Average Unemployment Rate (2015-2023)



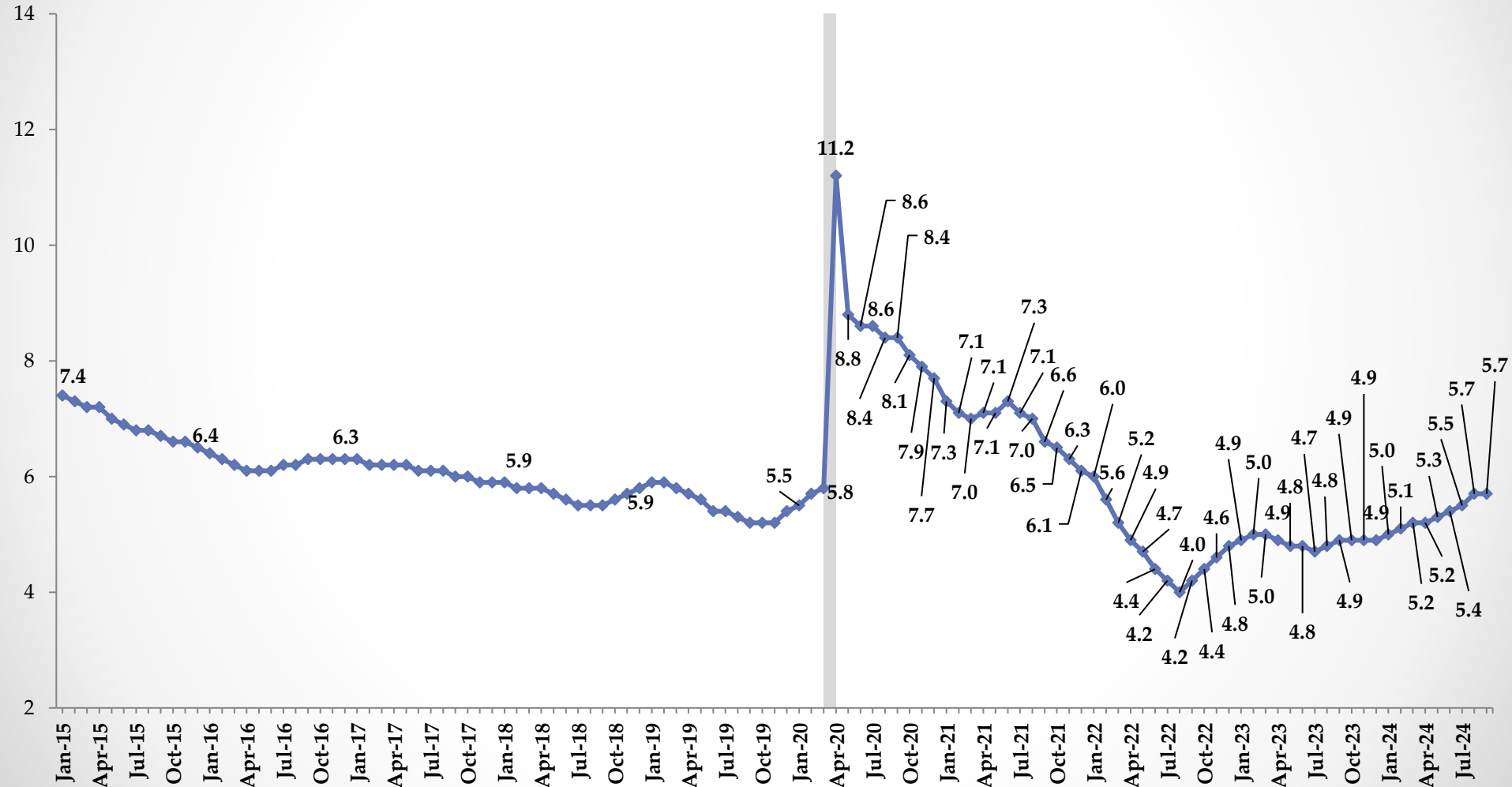
**Note:** The gray area marks the NBER's Business Cycle, which identifies the dates of peaks and troughs framing economic recessions and expansions



# Department of Employment Services

*Washington, DC's lead workforce development and labor agency*

D.C.'s Monthly Unemployment Rate: January 2015 - September 2024



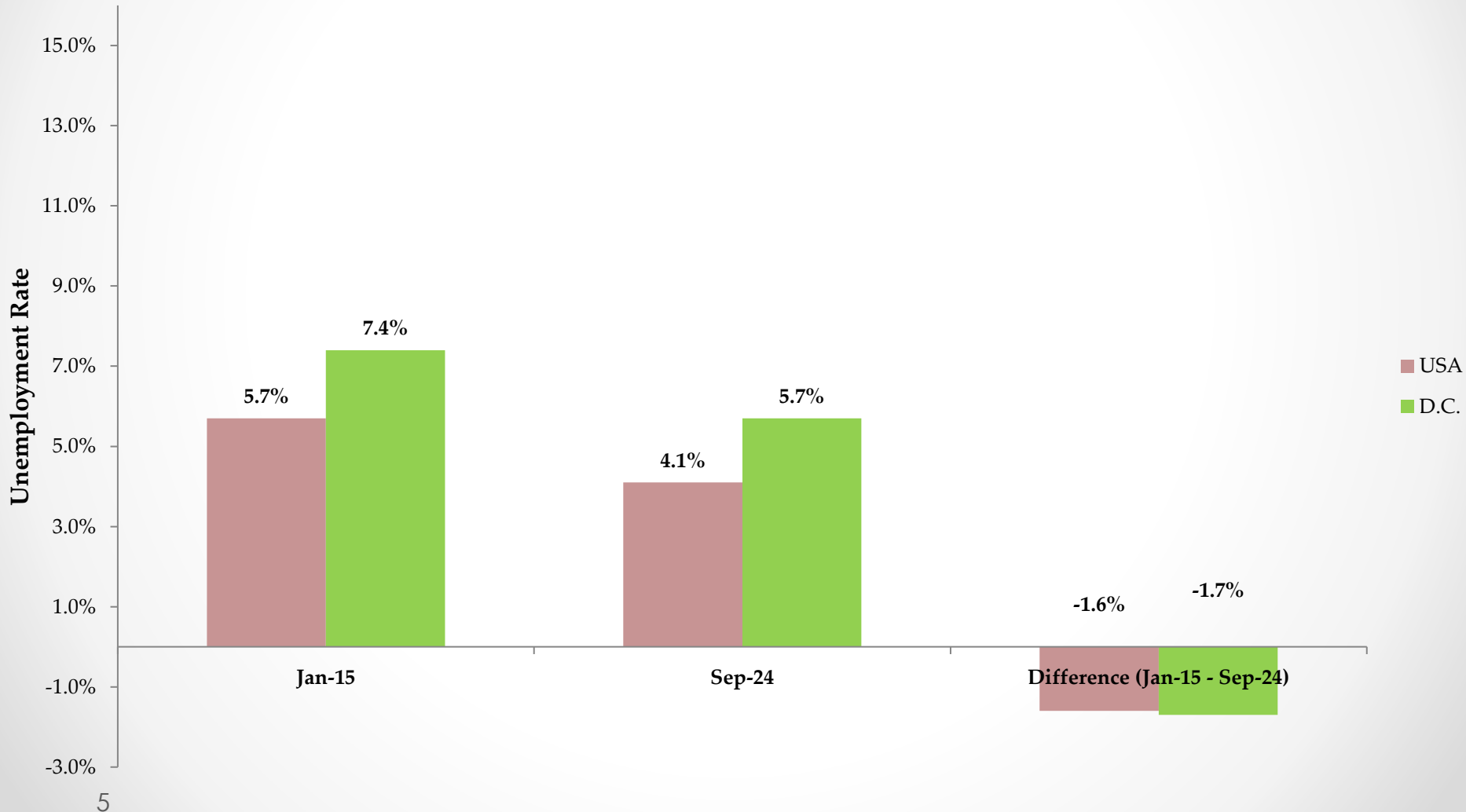
**Note:** The gray area marks the NBER's Business Cycle, which identifies the dates of peaks and troughs framing economic recessions and expansions



# Department of Employment Services

Washington, DC's lead workforce development and labor agency

## Local and National Unemployment Rate (January 2015 - September 2024)

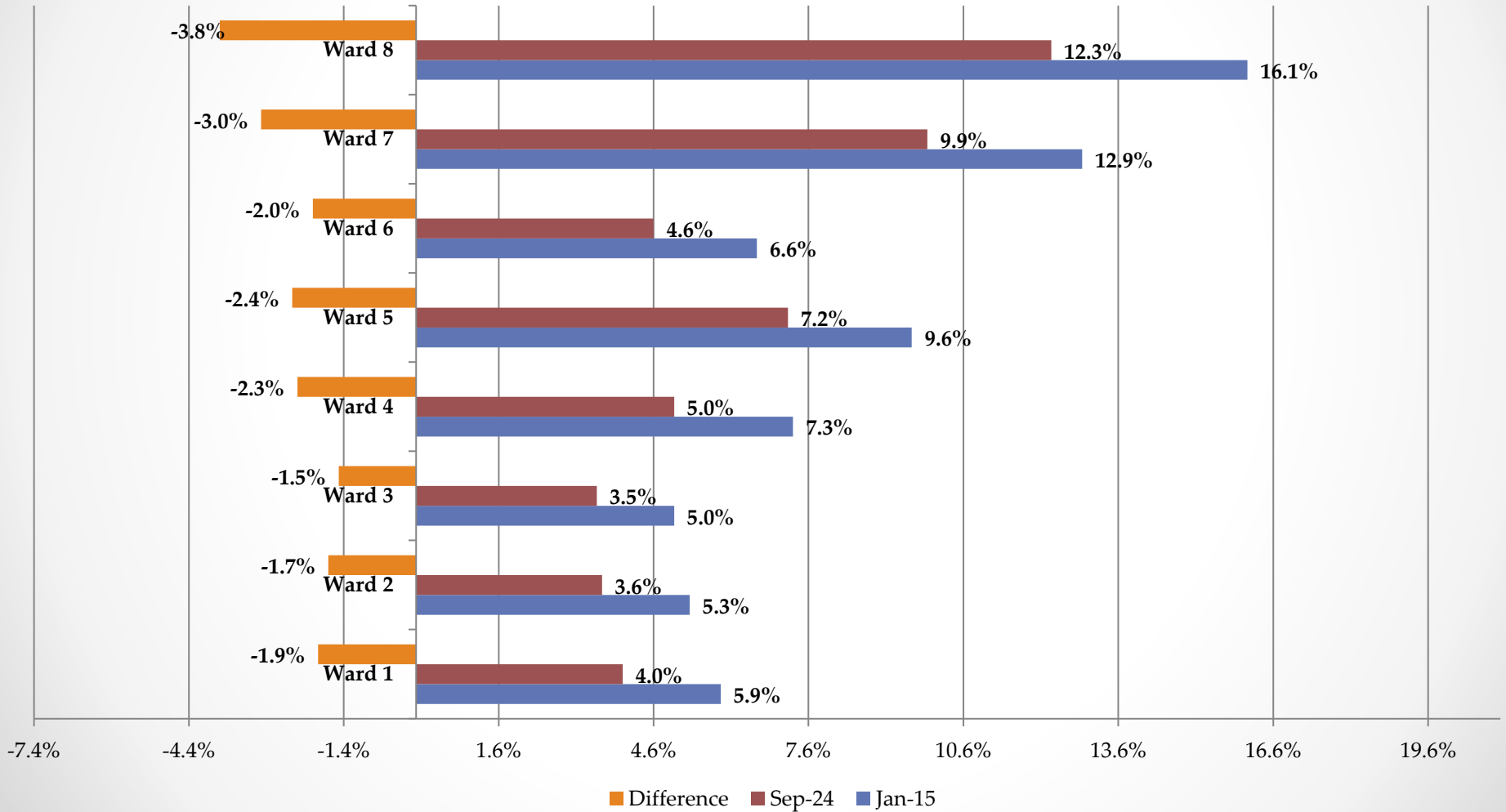




# Department of Employment Services

*Washington, DC's lead workforce development and labor agency*

**D.C.'s Unemployment Rate by Ward (January 2015 - September 2024)**



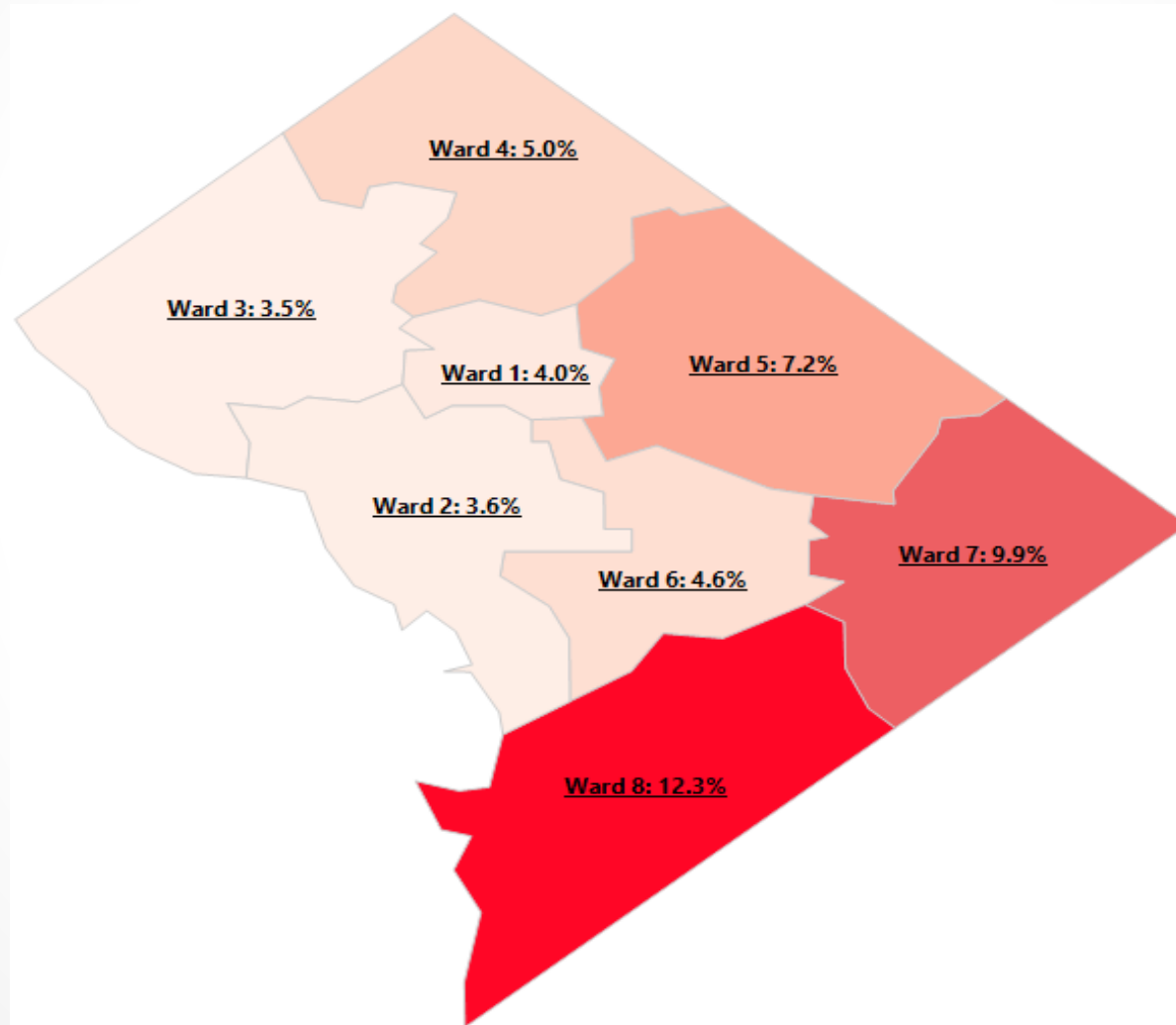


# Department of Employment Services

*Washington, DC's lead workforce development and labor agency*

---

## D.C.'s Unemployment Rate by Ward: September 2024

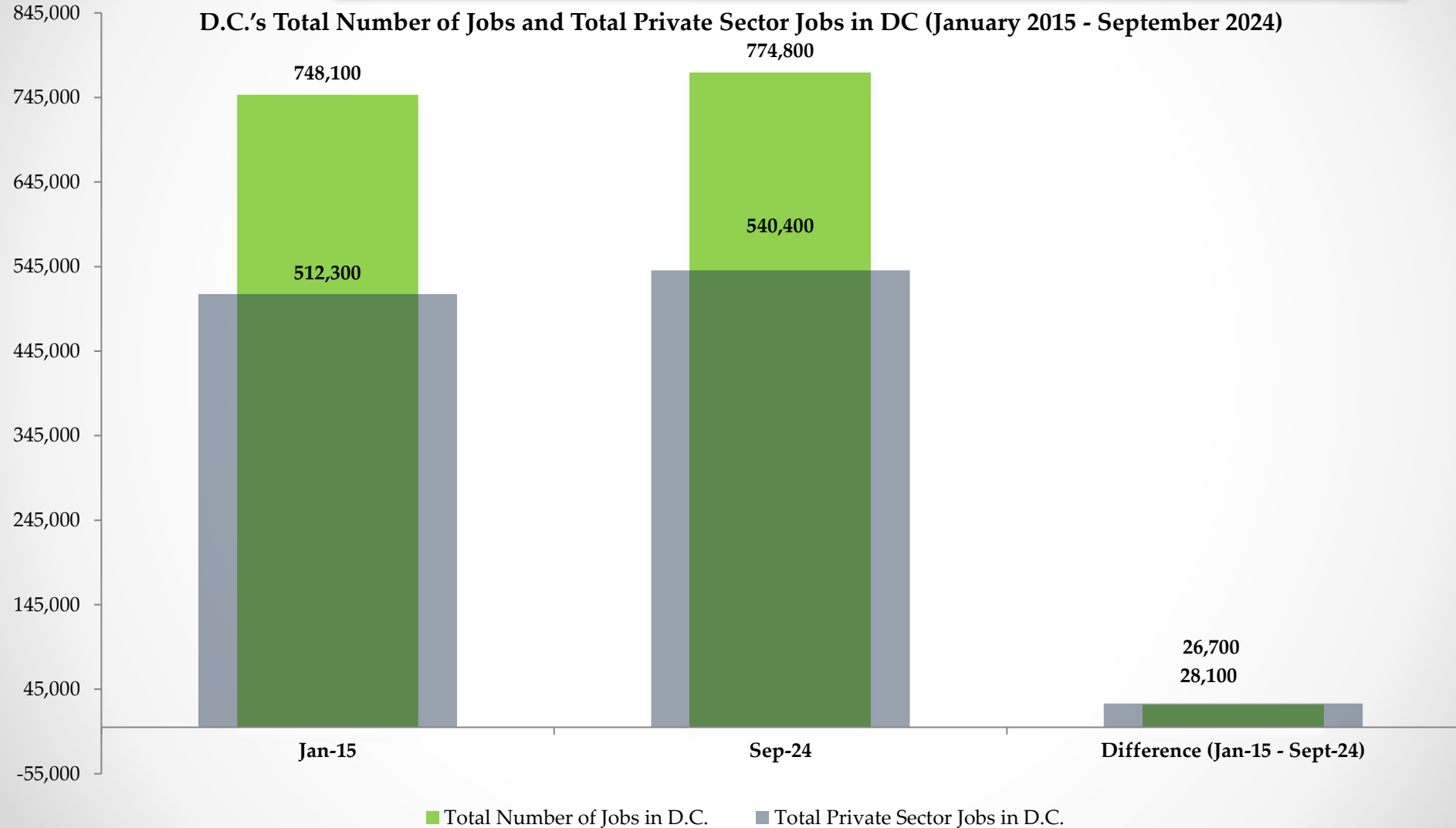




# Department of Employment Services

*Washington, DC's lead workforce development and labor agency*

**D.C.'s Total Number of Jobs and Total Private Sector Jobs in DC (January 2015 - September 2024)**



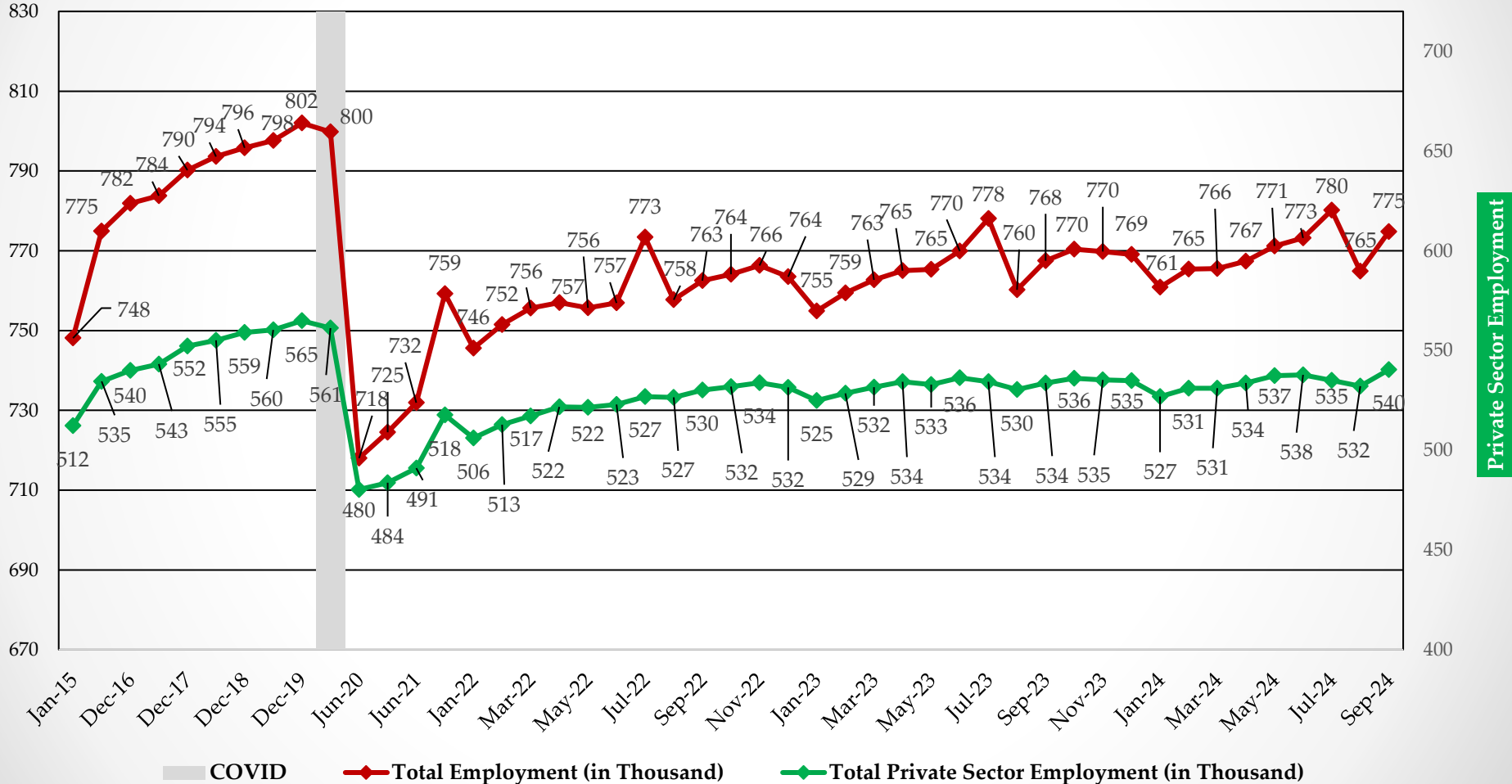




# Department of Employment Services

Washington, DC's lead workforce development and labor agency

D.C.'s Total and Private Sector Employment (January 2015 - September 24) (In Thousands)



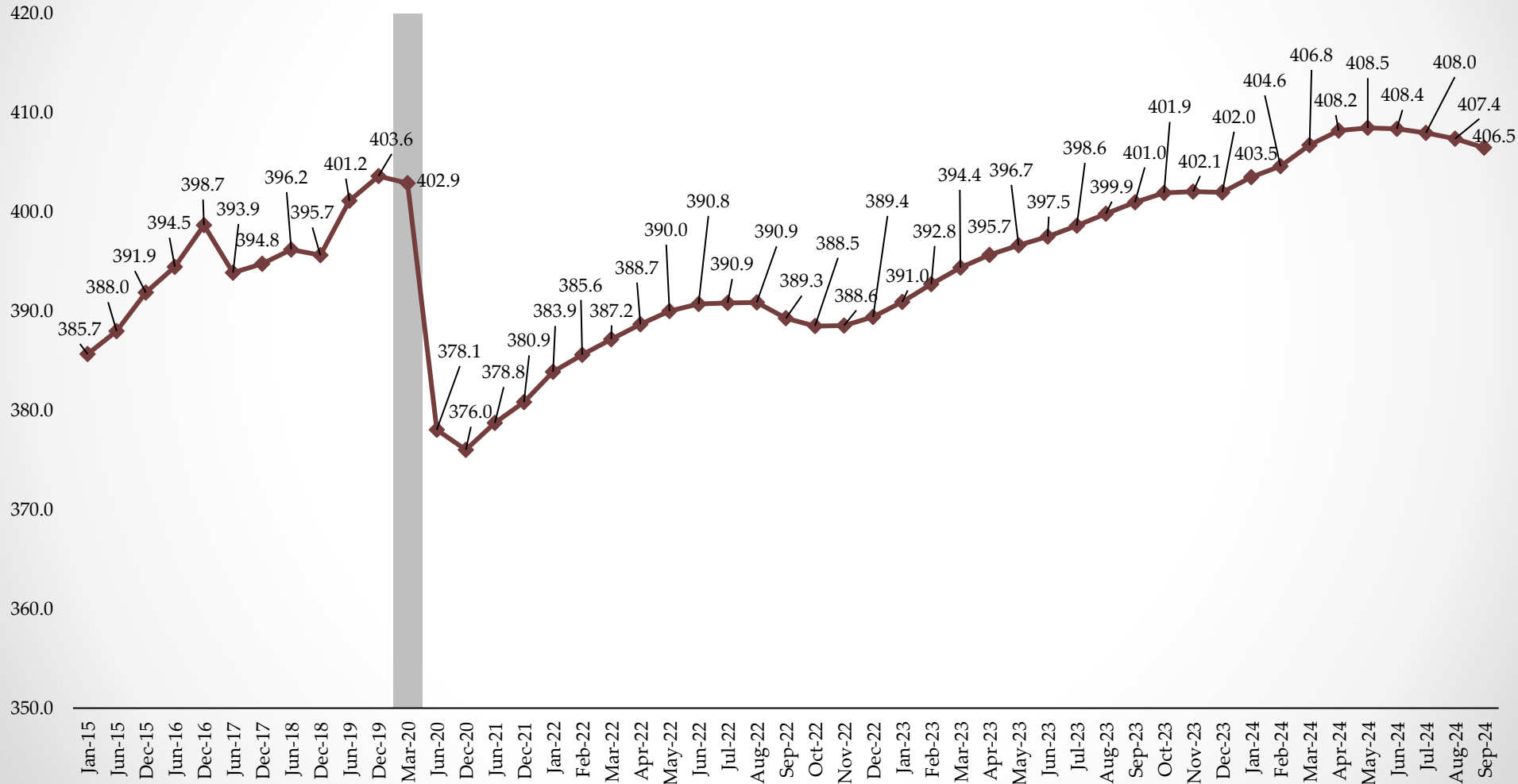
Note: The gray area marks the NBER's Business Cycle, which identifies the dates of peaks and troughs framing economic recessions and expansions



# Department of Employment Services

*Washington, DC's lead workforce development and labor agency*

D.C.'s Labor Force (January 2015 - September 24) (In Thousands)



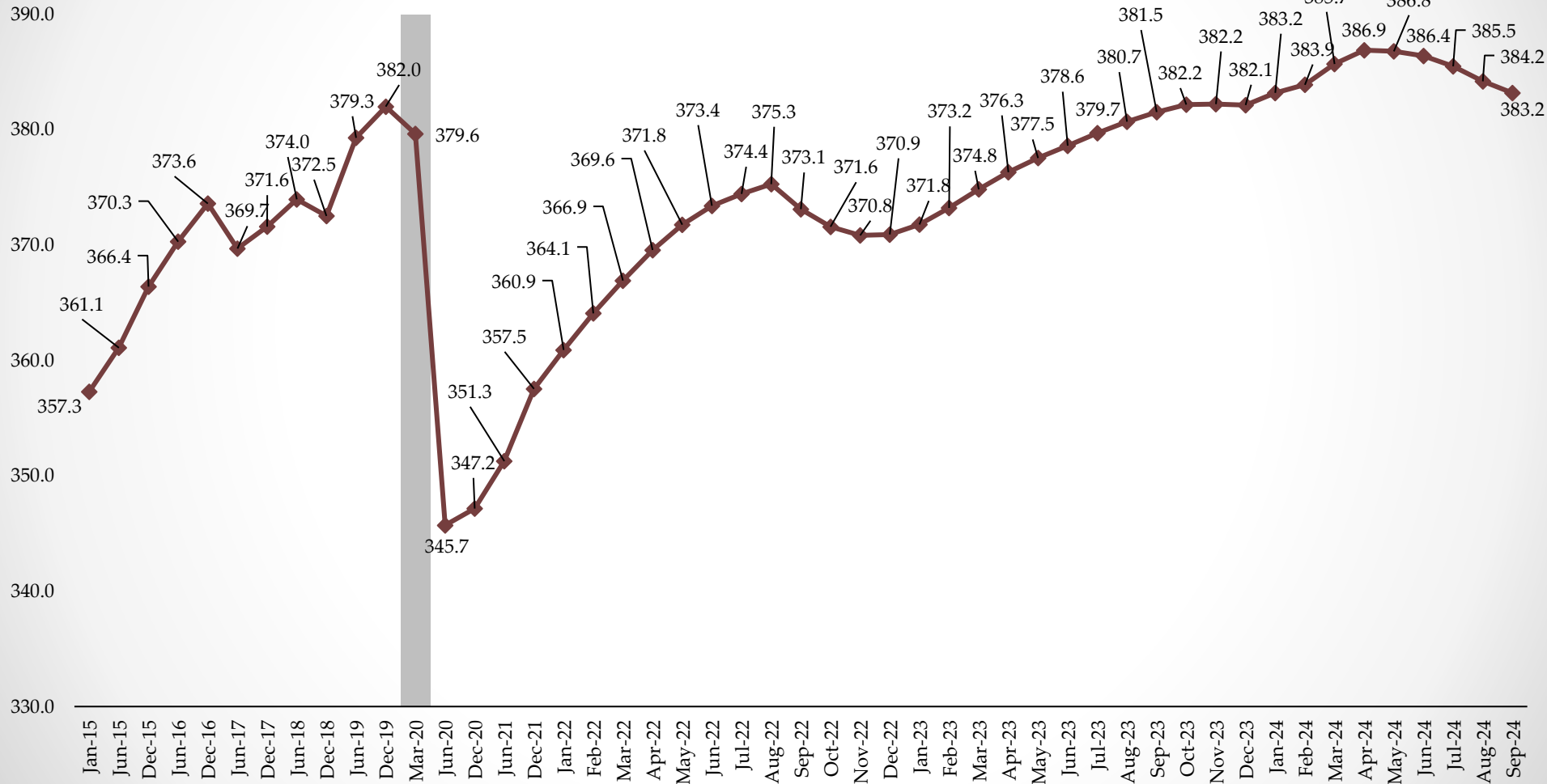
**Note:** The gray area marks the NBER's Business Cycle, which identifies the dates of peaks and troughs framing economic recessions and expansions



# Department of Employment Services

*Washington, DC's lead workforce development and labor agency*

D.C.'s Employed Residents (January 2015 - September 24) (In Thousands)



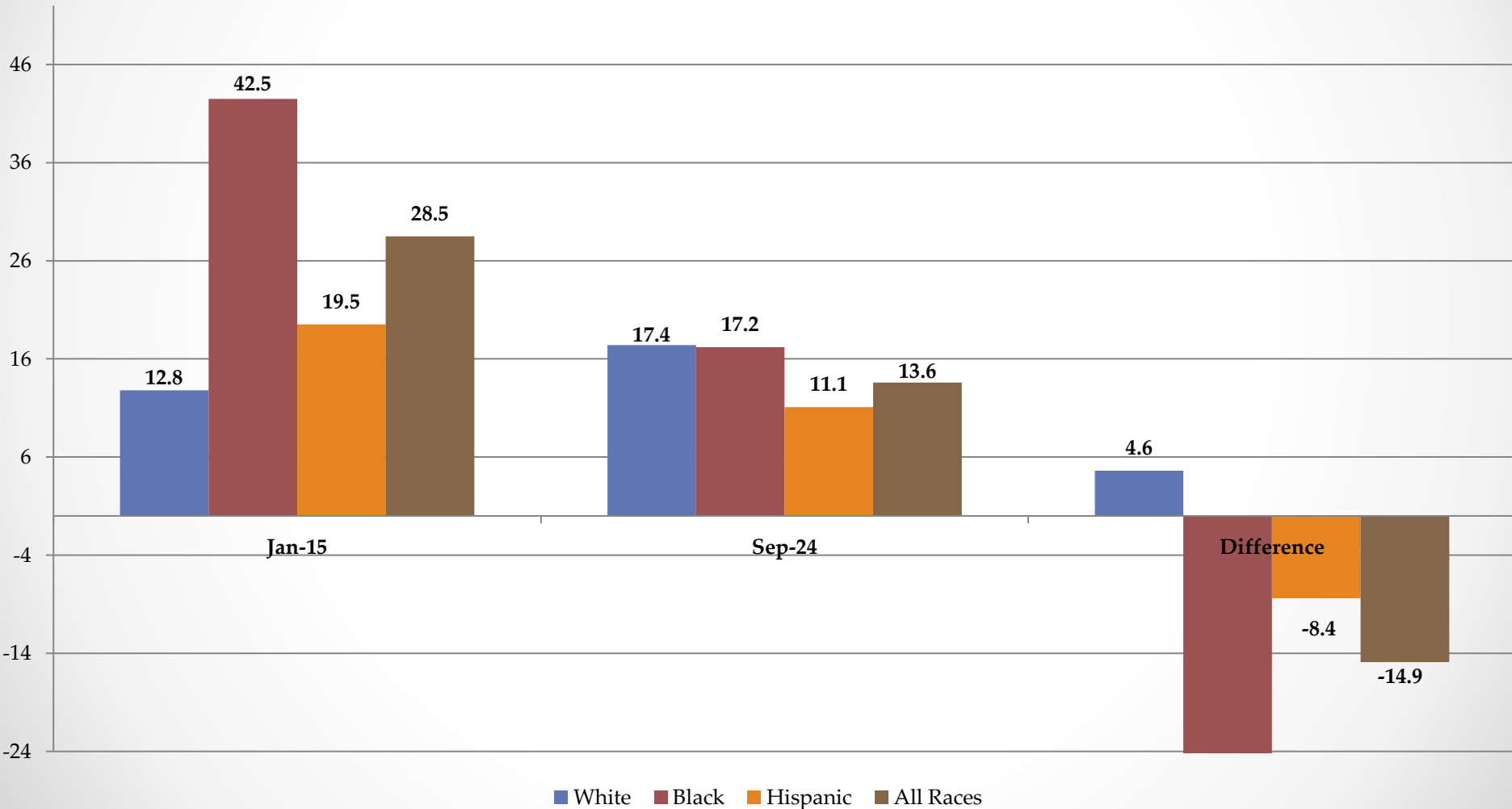
**Note:** The gray area marks the NBER's Business Cycle, which identifies the dates of peaks and troughs framing economic recessions and expansions



# Department of Employment Services

*Washington, DC's lead workforce development and labor agency*

D.C.'s Median Duration of Unemployment (in weeks) (January 2015 - September 2024)

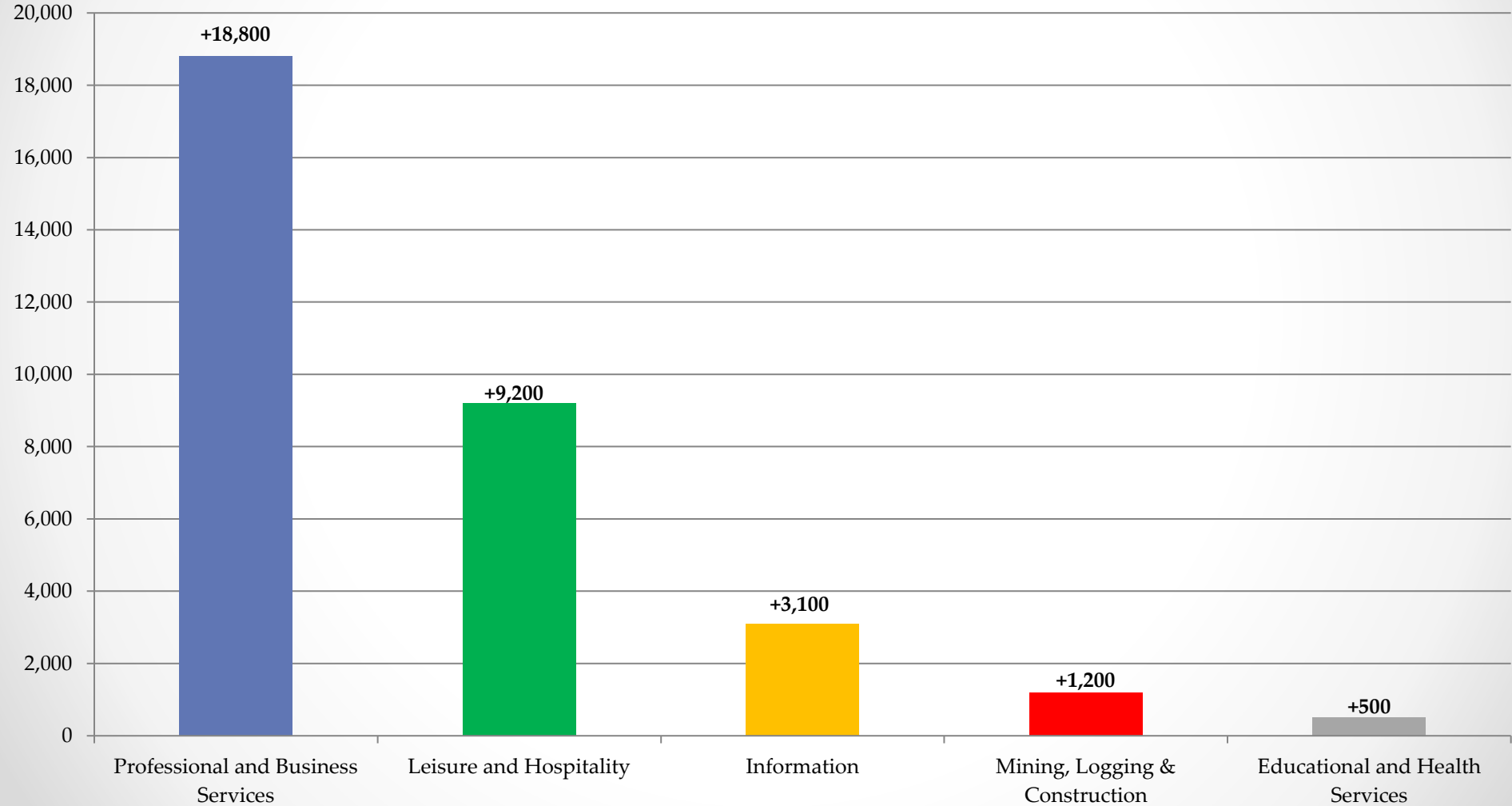




# Department of Employment Services

*Washington, DC's lead workforce development and labor agency*

D.C.'s Top 5 Industries with Highest Employment Increase (January 2015 – September 2024)

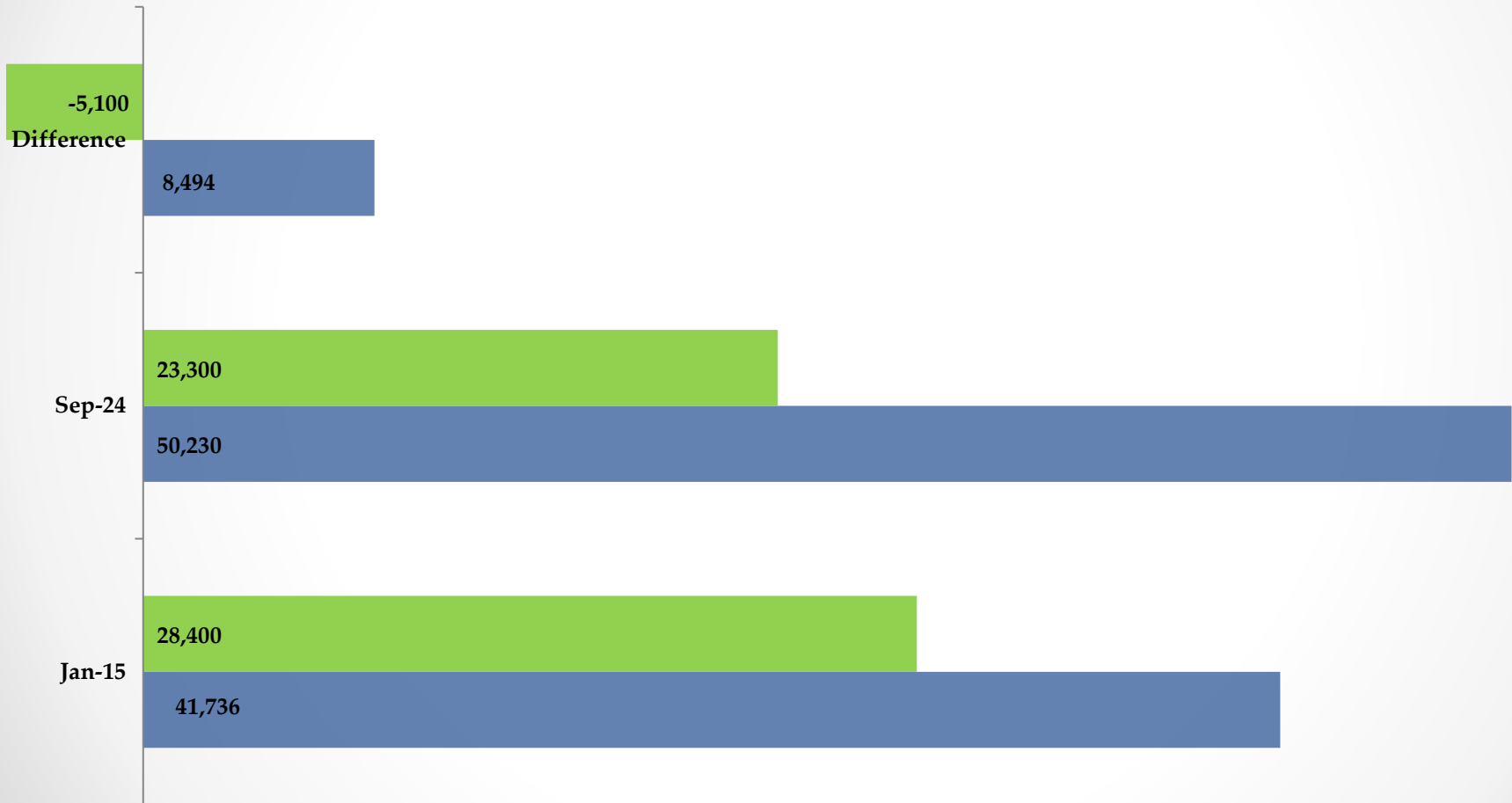




# Department of Employment Services

*Washington, DC's lead workforce development and labor agency*

D.C.'s Job Openings vs. Number of Unemployed DC Residents (January 2015 - September 2024)



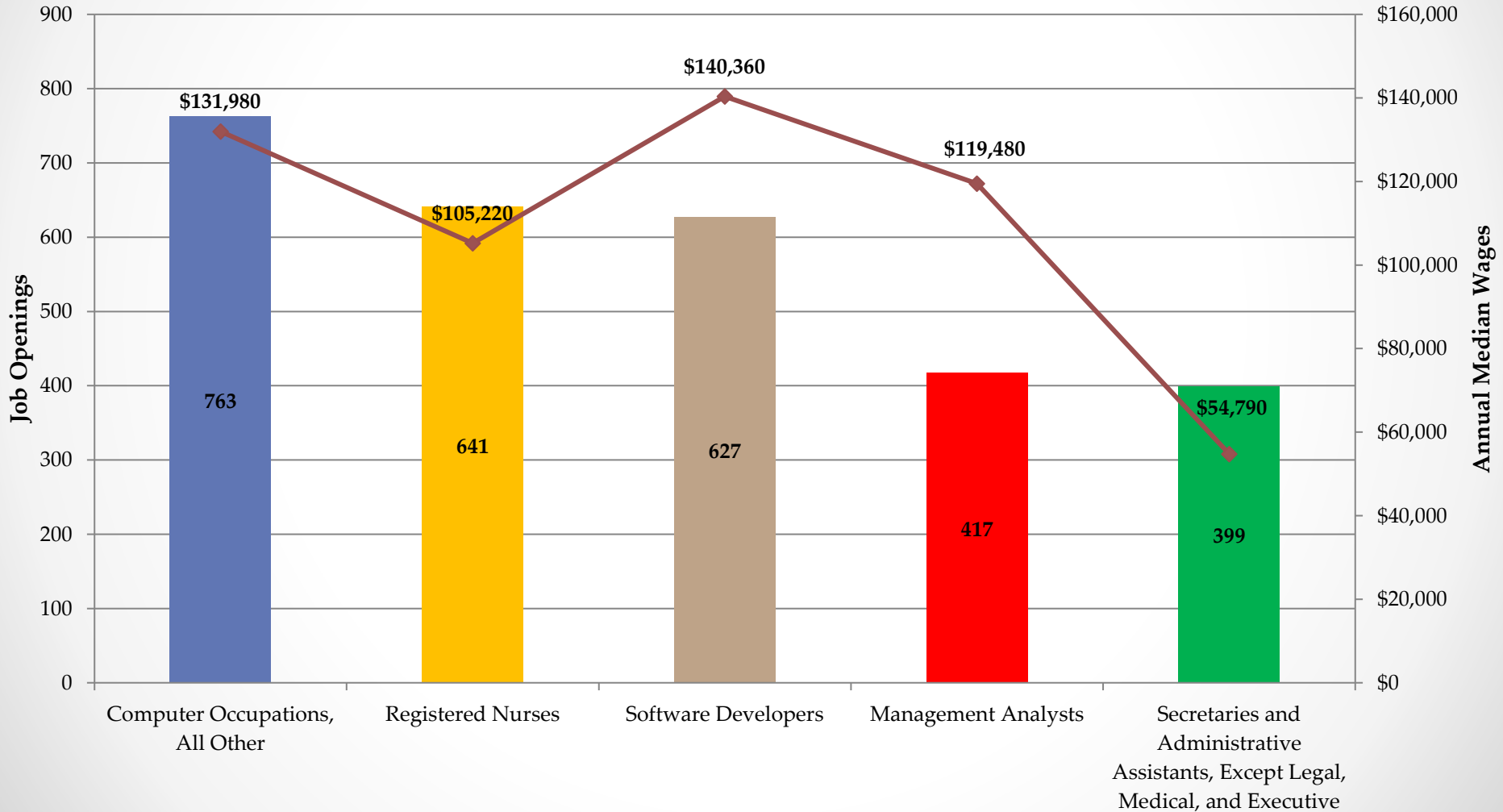
■ Number Unemployed in D.C.     ■ Number of Job Openings (Advertised Jobs Lightcast)



# Department of Employment Services

*Washington, DC's lead workforce development and labor agency*

D.C.'s Top 5 Job Postings: October 2023 - September 2024 (Average Monthly Unique Job Postings)

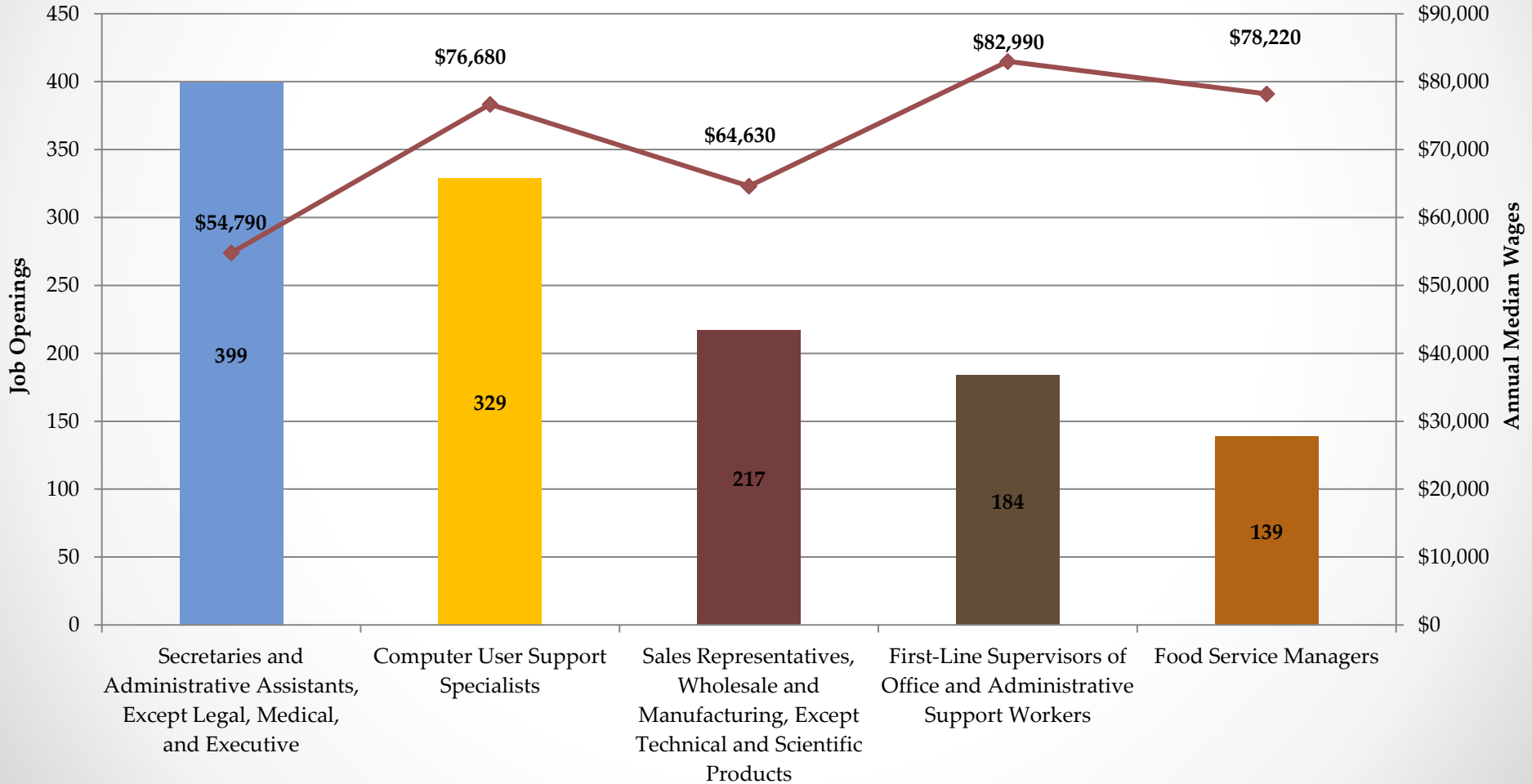




# Department of Employment Services

*Washington, DC's lead workforce development and labor agency*

**D.C.'s Top 5 Job Postings Requiring Less Than Bachelor's Degree: October 2023 - September 2024**  
**(Avg Monthly Unique Job Postings)**







# Department of Employment Services

*Washington, DC's lead workforce development and labor agency*

---

This workforce product was funded by a grant awarded by the U.S. Department of Labor's Employment and Training Administration. The product was created by the recipient and does not necessarily reflect the official position of the U.S. Department of Labor. The U.S. Department of Labor makes no guarantees, warranties, or assurances of any kind, express or implied, with respect to such information, including any information on linked sites and including, but not limited to, accuracy of the information or its completeness, timeliness, usefulness, adequacy, continued availability, or ownership. This product is copyrighted by the institution that created it. Internal use by an organization and/or personal use by an individual for non-commercial purposes is permissible. All other uses require the prior authorization of the copyright owner.



# Department of Employment Services

*Washington, DC's lead workforce development and labor agency*

---

## Contact Information

- Opeyemi Fasakin, Labor Economist
- Thomas Tsegaye, Labor Economist
- For Data Requests [Click Here](#)
- Email: [Imi.does@dc.gov](mailto:Imi.does@dc.gov)
- Phone: (202) 724-7000
- Websites: [www.does.dc.gov](http://www.does.dc.gov)  
<http://does.dc.gov/page/labor-statistics>

